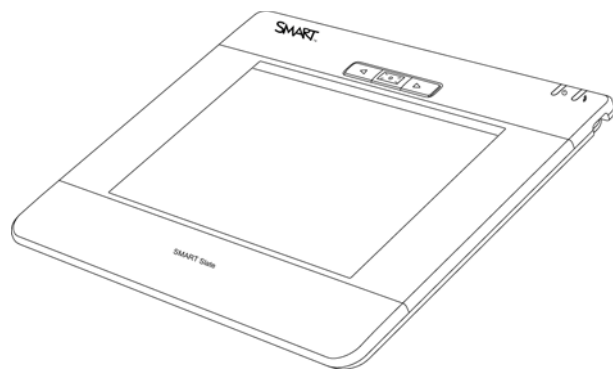


SMART[®]



Service Parts Diagrams

**For Model:
WS200**

Service Parts Diagrams Revision History

Revision 1 - March, 2010

- New document

Revision 2 - June, 2010

- Add 52-00660-20
- Add 52-00645-20

Revision 3 - September, 2011

- Change description for 93-00739-20 to "Cable, USB A to USB Mini-B, 4'11" (1.5 m)"

Revision 4 - September, 2012

- Change 45-00008-20 to 52-00641-20

Standard Warranty Terms

Base product: Two-year limited equipment warranty

First Customer Ship: December, 2009

SMART Technologies

3636 Research Road NW
Calgary, AB T2L 1Y1
CANADA

Support +1.403.228.5940 or Toll Free 1.866.518.6791 (Canada/U.S.)

Support Fax +1.403.806.1256

www.smarttech.com/contactserviceparts www.smarttech.com



© 2012 SMART Technologies ULC. All rights reserved. SMART Board, smarttech and the SMART logo are trademarks or registered trademarks of SMART Technologies ULC in the U.S. and/or other countries. All other third-party product and company names are for identification purposes only and may be trademarks of their respective owners. Contents are subject to change without notice. 09/2012.

Service Parts Diagrams for the WS200

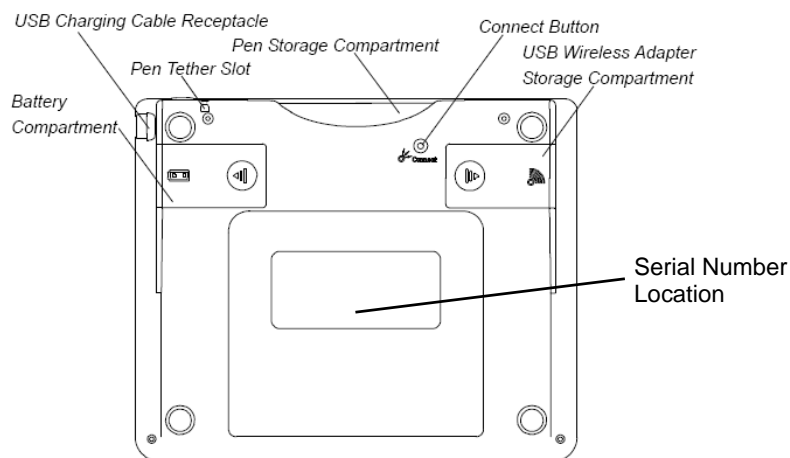
Identifying Your Product Using the Serial Number 1

Ordering Parts 1

WS200 Parts 2

Identifying Your Product Using the Serial Number

To make sure that you have the correct service parts diagrams, you must verify the serial number of your SMART Slate. For model WS200, the serial number is located on the back of the slate in the middle. An example of the serial number format is shown below.



09IP001321

Serial Number Example

Ordering Parts

Customers

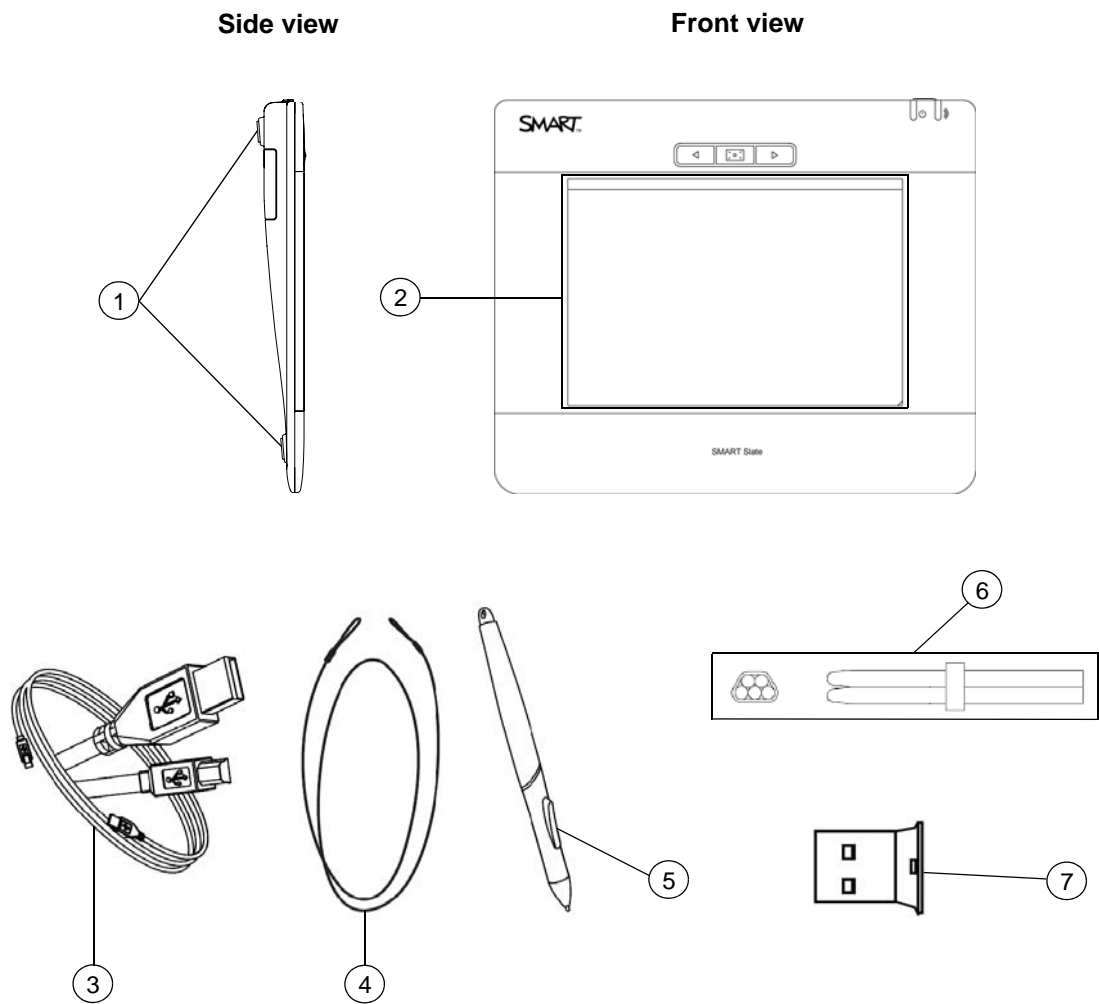
To order any of the parts in these service parts diagrams, contact your local reseller. To find a reseller near you, visit www.smarttech.com/where.

Dealers and Distributors

For specific technical and pricing enquiries in regards to these diagrams please contact our service parts department. Pricing is also available on-line via the SOURCE website (source.smarttech.com).

Web Form: www.smarttech.com/contactserviceparts
Phone: 1.888.42.SMART
International: +1.403.245.0333

WS200 Parts



Item	Part No.	Qty	Description
1	52-00660-20	4	Foot, adhesive rubber, WS200 NOTE: Comes attached to the WS200.
2	52-00645-20	1	Overlay, WS200 NOTE: Comes attached to the WS200.
3	93-00739-20	1	Cable, USB A to USB Mini-B, 4'11" (1.5 m)
4	01-00149	1	Tether, pen, SSID250, SSID350, SSID370, ID422w, WS100 and WS200
5	03-00170-20	1	Pen, WS200
6	52-00641-20	1	Tip, pen, SSID250, SSID350, SSID370, ID422w, WS100 and WS200, set of five
7	BTWS200	1	Bluetooth Wireless Adapter for WS200 including setup CD
Not shown	01-00272-20	1	Battery, Lithium Ion Pack, 3.7V, 1800 mA, WS200