

SMART[®]



Service Parts Diagrams

**For Model:
SDC-330**

Service Parts Diagrams Revision History

Revision 1 - July, 2010

- New document

Revision 2 - July, 2011

- Add FRU-CUBE

Revision 3 - January, 2013

- Remove 93-00456-20 and 93-00457-20
- Add 1018853 and 93-00832-20

Standard Warranty Terms

Base product: Five-year limited equipment warranty

First Customer Ship: June, 2010

SMART Technologies

3636 Research Road NW
Calgary, AB T2L 1Y1
CANADA

Support +1.403.228.5940 or Toll Free 1.866.518.6791 (Canada/U.S.)

Support Fax +1.403.806.1256

www.smarttech.com/contactserviceparts www.smarttech.com



© 2013 SMART Technologies ULC. All rights reserved. SMART Board, smarttech and the SMART logo are trademarks or registered trademarks of SMART Technologies ULC in the U.S. and/or other countries. All other third-party product and company names are for identification purposes only and may be trademarks of their respective owners. Contents are subject to change without notice. 01/2013.

Service Parts Diagrams for the SDC-330

Identifying Your Product Using the Serial Number	1
Ordering Parts	1
SDC-330 Parts	2

Identifying Your Product Using the Serial Number

To make sure that you have the correct service parts diagrams, you must verify the serial number of your SDC-330. The serial number is located on the bottom of the camera base. An example of the serial number format is shown below.



Serial Number Location

E01B000077

Unique Serial Number

Ordering Parts

Customers

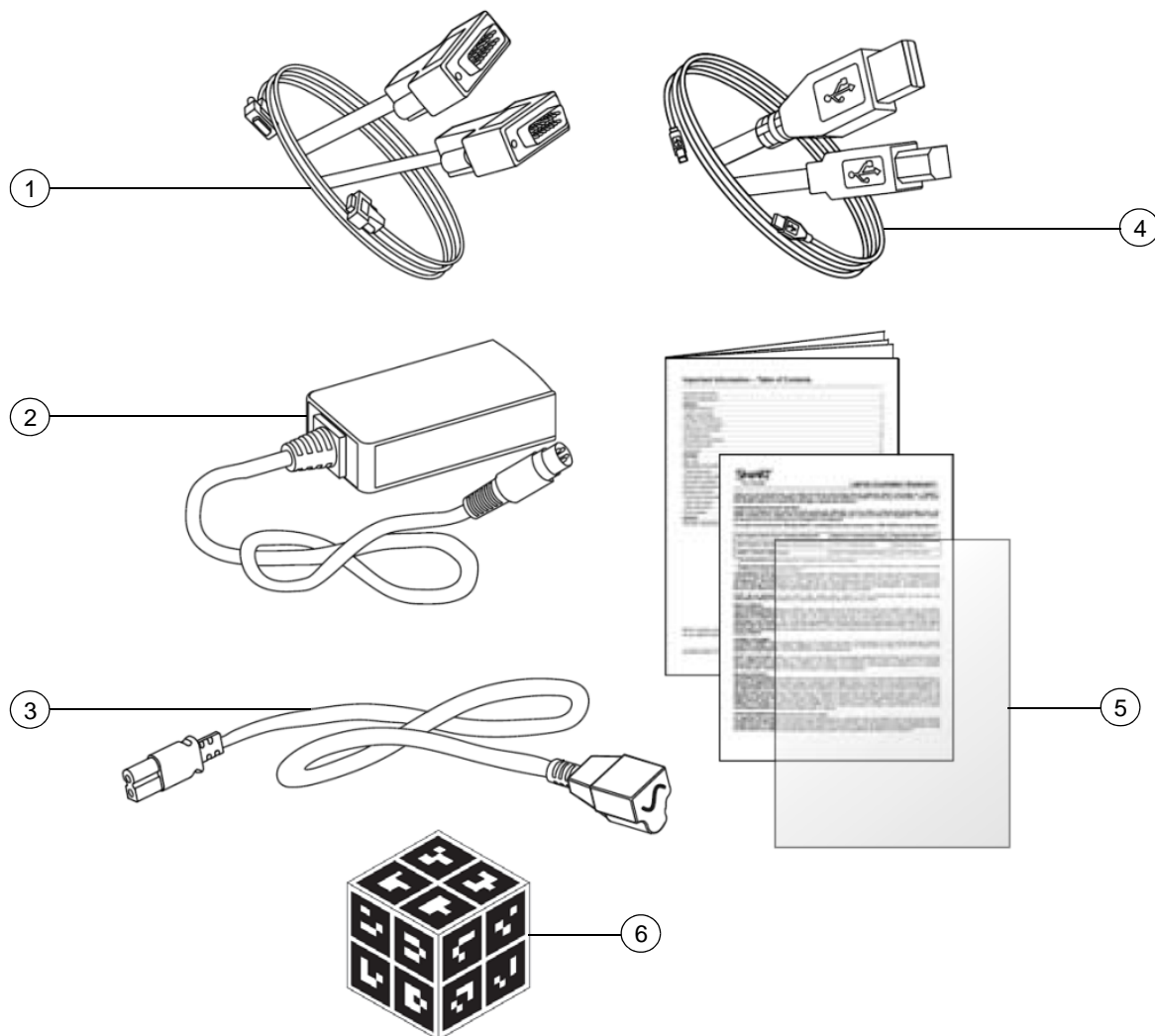
To order any of the parts in these service parts diagrams, contact your local reseller. To find a reseller near you, visit www.smarttech.com/where.

Dealers and Distributors

For specific technical and pricing enquiries in regards to these diagrams please contact our service parts department. Pricing is also available on-line via the SOURCE website (source.smarttech.com).

Web Form: www.smarttech.com/contactserviceparts
Phone: 1.888.42.SMART
International: +1.403.245.0333

SDC-330 Parts



Item	Part No.	Qty	Description
1	1018853	1	Cable, video, HD15 male to HD15 male, 6' (1.8 m)
2	60-00041-20	1	Power supply, 12V DC, 2.0A, universal switching
3	93-00592-20	1	Cable, power, North America, 6' 6" (2.0 m)
3	93-00542-20	1	Cable, power, Europe, 6' 6" (2.0 m)
3	93-00543-20	1	Cable, power, United Kingdom, 6' 6" (2.0 m)
3	93-00576-20	1	Cable, power, Australia, 6' 6" (2.0 m)
4	93-00832-20	1	Cable, USB, A-B, 6' (1.8 m)
5	01-00252	1	Sheet, anti-glare
6	FRU-CUBE	1	FRU, Cube, Mixed Reality