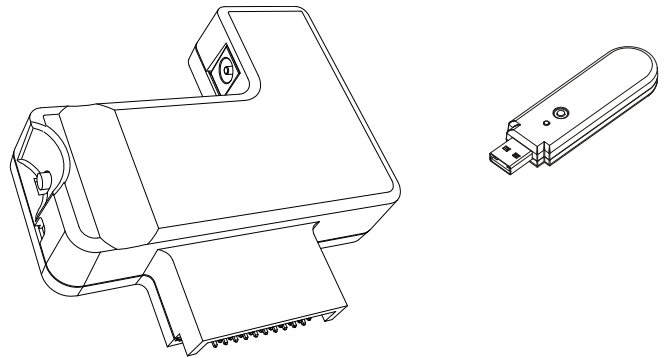


SMART™



Service Parts Diagrams

**For Model:
WC6D**

Service Parts Diagrams Revision History

Revision 1 - October, 2010

- New document

Revision 2 - July, 2011

- Add 93-00819-20

Revision 3 - October, 2014

- Change 60-00055-20 to 1017842

Standard Warranty Terms

Base product: One-year limited equipment warranty

First Customer Ship: September, 2010

SMART Technologies

3636 Research Road NW
Calgary, AB T2L 1Y1
CANADA

Support +1.403.228.5940 or Toll Free 1.866.518.6791 (Canada/U.S.)

Support Fax +1.403.806.1256

ServiceParts@smarttech.com www.smarttech.com



Service Parts Diagrams for the WC6D

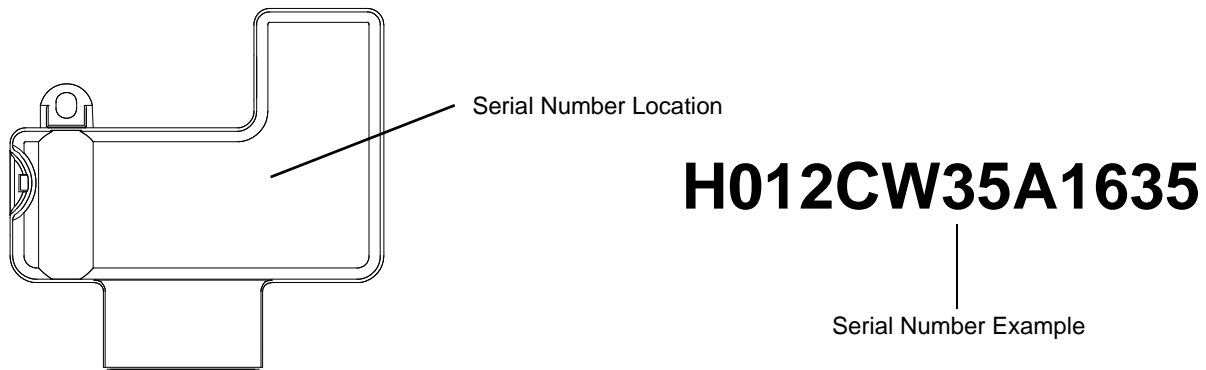
Identifying Your Product Using the Serial Number 1

Ordering Parts 1

WC6D Parts 2

Identifying Your Product Using the Serial Number

To make sure that you have the correct service parts diagrams, you must verify the serial number of your WC6D. The serial number will be located on the front face of the WC6D adapter connected to the SMART Board controller. An example of the serial number format is shown below.



Ordering Parts

Customers

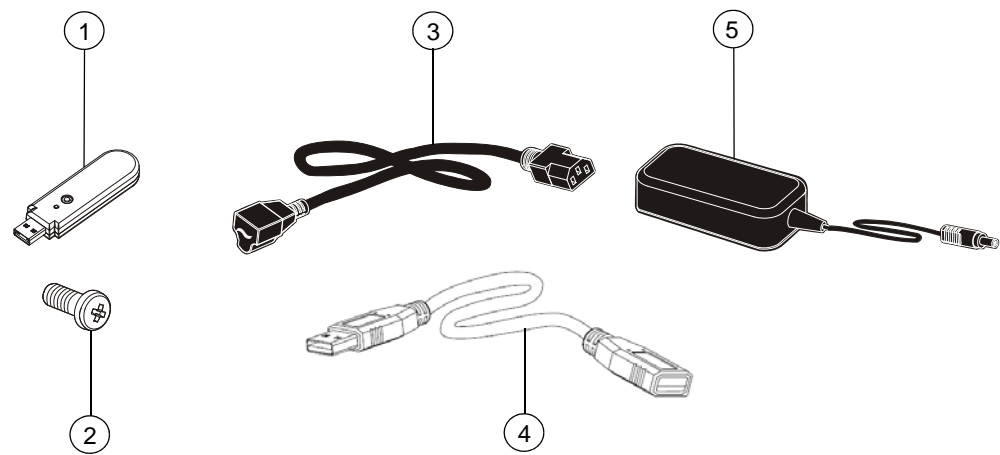
To order any of the parts in these service parts diagrams, contact your local reseller.
To find a reseller near you, visit www.smarttech.com/where.

Dealers and Distributors

For specific technical and pricing enquiries in regards to these diagrams please contact our service parts department.
Pricing is also available on-line via the SOURCE website (source.smarttech.com).

E-mail: serviceparts@smarttech.com
Phone: 1.888.42.SMART
International: +1.403.245.0333

WC6D Parts



Item	Part No.	Qty	Description
1	03-00177-20	1	Dongle, PC, WC6D
2	30-00915-20	1	Screw, No. 8 1/2", Phillips, pan head, for plastics NOTE: For attaching the WC6D module to the SMART Board interactive whiteboard.
3	93-051	1	Cable, power, North America, 8' (2.4 m)
3	93-055	1	Cable, power, United Kingdom, 8' (2.4 m)
3	93-056	1	Cable, power, Australia, 8' (2.4 m)
3	93-063	1	Cable, power, South Africa, 8' (2.4 m)
3	93-054	1	Cable, power, Europe, 8' (2.4 m)
3	93-00654-20	1	Cable, power, Japan, 8' (2.4 m)
4	93-00819-20	1	Cable, USB, extender, A-A, 4' (1.2 m)
5	1017842	1	Power supply, 6V DC, 3.0A, universal switching