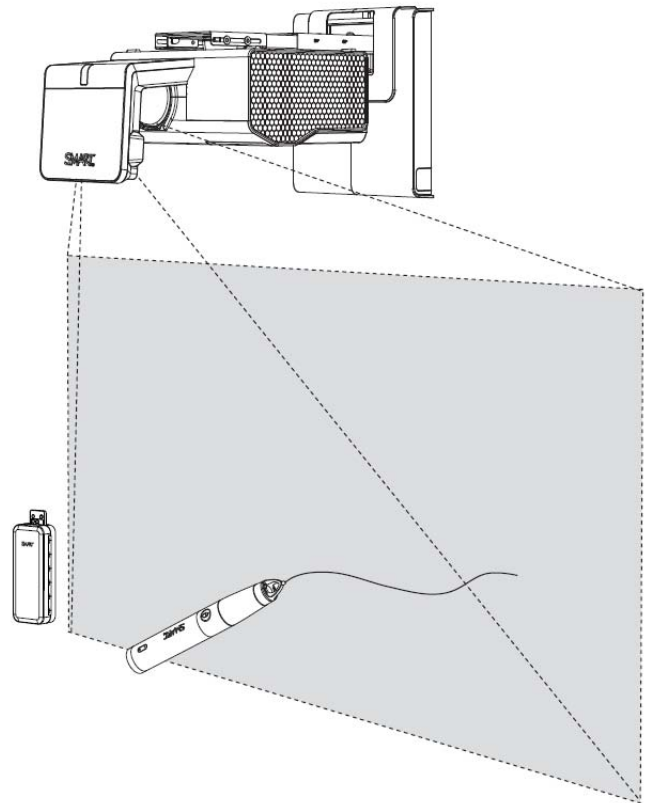


SMART[®]



Service Parts Diagrams

**For Model:
SLR40wi**

Service Parts Diagrams Revision History

Revision 1 - June, 2012

- New document

Revision 2 - August, 2012

- Add part number 1016967

Revision 3 - November, 2013

- Change 20-01623-20 to 1013576

Standard Warranty Terms

The projector and interactive pen have a three-year limited equipment warranty. The projector lamp has a 1000-hour/one-year warranty.

First Customer Ship: June, 2012

SMART Technologies

3636 Research Road NW
Calgary, AB T2L 1Y1
CANADA

Support +1.403.228.5940 or Toll Free 1.866.518.6791 (Canada/U.S.)

Support Fax +1.403.806.1256

www.smarttech.com/contactserviceparts www.smarttech.com



Service Parts Diagrams for the SLR40wi

Identifying Your Product Using the Serial Number 1

Ordering Parts 1

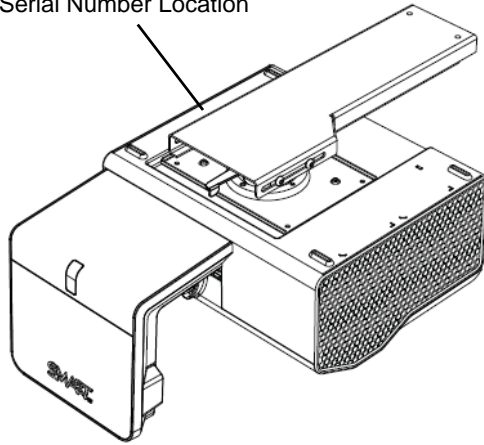
SLR40wi Parts 2

Optional Mounting Hardware Kit Assembly (Part No. 1013576) 4

Identifying Your Product Using the Serial Number

To make sure that you have the correct service parts diagrams, you must verify the serial number of your SLR40wi Projector. The serial number is located on the top of the projector. An example of the serial number format is shown below.

Serial Number Location



B011EC27K0148

Unique Serial Number

Ordering Parts

Customers

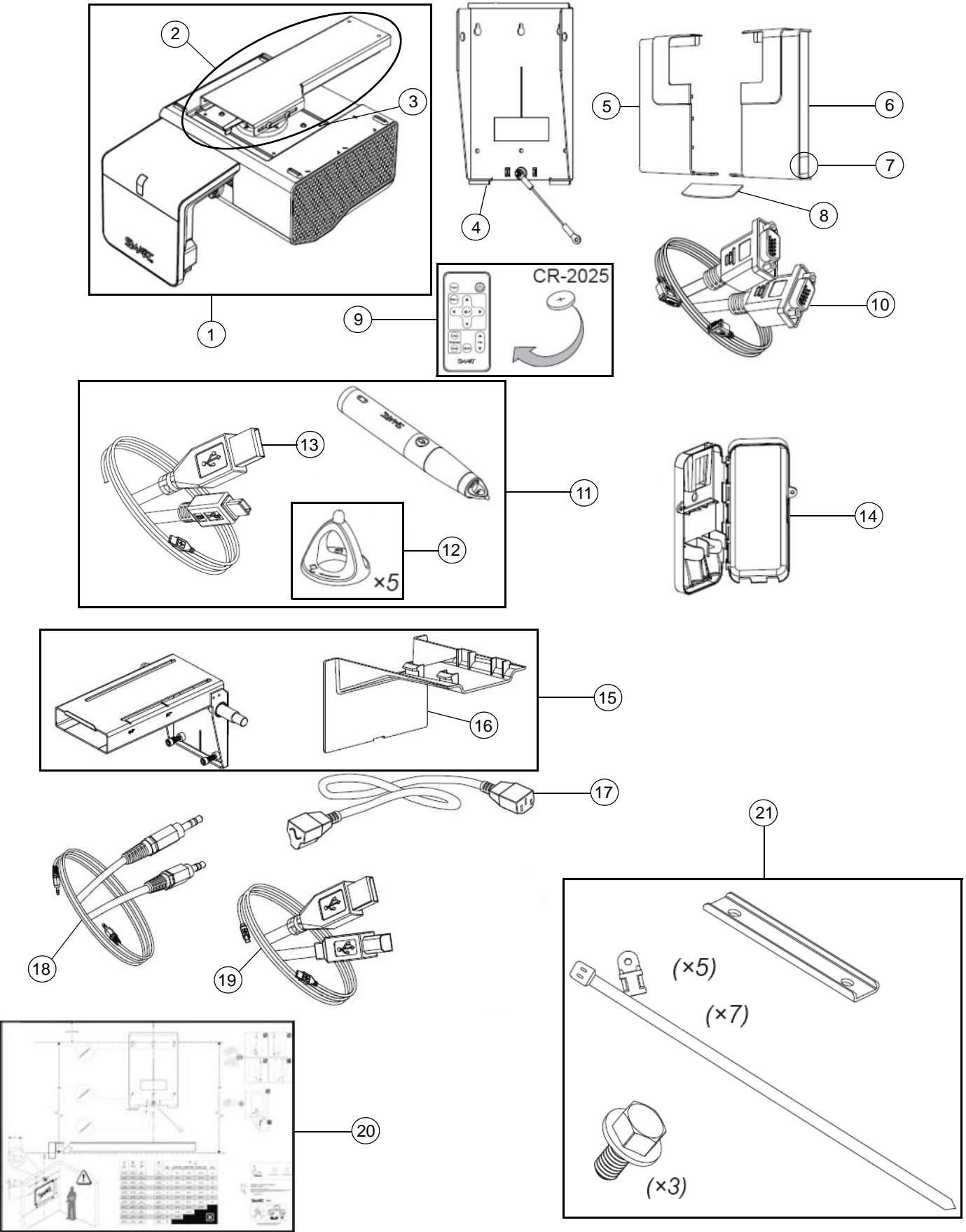
To order any of the parts in these service parts diagrams, contact your local reseller.
To find a reseller near you, visit www.smarttech.com/where.

Dealers and Distributors

For specific technical and pricing enquiries in regards to these diagrams please contact our service parts department.
Pricing is also available on-line via the SOURCE website (source.smarttech.com).

Web Form: www.smarttech.com/contactserviceparts
Phone: 1.888.42.SMART
International: +1.403.245.0333

SLR40wi Parts



Item	Part No.	Qty	Description
1	FRU-SLR40WI-PJR	1	FRU, LightRaise 40wi projector only NOTE: Includes projector and items 2, 3.
2	1017215	1	Assembly, boom, front NOTE: Comes attached to the SLR40wi projector.
3	30-01279-20	4	Screw, M4 x 8 mm, Phillips, pan head NOTE: For attaching item 2 to SLR40wi projector.
4	1016962	1	Assembly, wall plate
5	1016958	1	Cover, wall mount, left
6	1016959	1	Cover, wall mount, right
7	1016964	2	Filler, side
8	1016965	1	Filler, lower
9	03-00131-20	1	Remote control NOTE: CR-2025 Battery not included with replacement remotes.
10	1017287	1	Cable, video, HD15 male to HD15 male, 16' (5.0 m)
11	RPEN-SLR40	1	Replacement Pen for LightRaise 40wi NOTE: Includes pen and items 12, 13.
12	FRU-NIB-SLR40WI	1	Replacement Nibs for LightRaise 40wi - Set of Five
13	1017281	1	Cable, USB A to USB Mini-B, 9' 10" (3.0 m)
14	1017223	1	Assembly, pen holder
15	1017294	1	Assembly, boom, rear NOTE: Includes rear boom and item 16.
16	1016967	1	Cover, wire
17	93-00630-20	1	Cable, power, North America, 14' 9" (4.5 m)
17	93-00632-20	1	Cable, power, United Kingdom, 14' 9" (4.5 m)
17	93-00631-20	1	Cable, power, Europe, 14' 9" (4.5 m)
17	93-00629-20	1	Cable, power, Australia, 14' 9" (4.5 m)
17	93-00634-20	1	Cable, power, Japan, 14' 9" (4.5 m)
17	93-00633-20	1	Cable, power, China, 14' 9" (4.5 m)
17	93-00670-20	1	Cable, power, Korea, 14' 9" (4.5 m)
18	1017279	1	Cable, audio, 3.5 mm male to 3.5 mm male, 16' (5.0 m)
19	1017280	1	Cable, USB A to USB B, 16' (5.0 m)
20	1017239	1	Template, mounting, LightRaise 40wi
21	1016970	1	Assembly, hardware kit
Not shown	1017295	1	Door, lamp cover, LightRaise 40wi NOTE: Comes attached to the SLR40wi projector.
Not shown	20-01501-20	1	Replacement Lamp for UF75, UF75w and SLR40wi Projectors

Optional Mounting Hardware Kit Assembly (Part No. 1013576)

