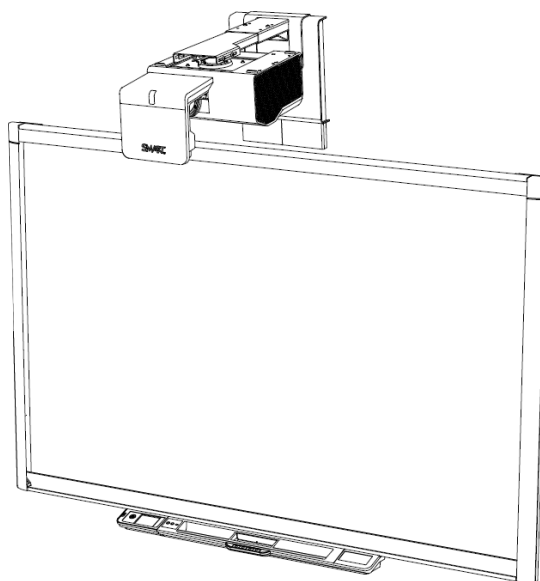


SMART[®]



Service Parts Diagrams

For Model:

SB880i5e-SMP revision 2

SB885i5e-SMP revision 2

**Applies only to models with serial numbers within the
the following ranges:**

SBE880-R2/H2/M2-A000001 to SBE880-R2/H2/M2-A999999

SBE885-R2/H2/M2-A000001 to SBE885-R2/H2/M2-A999999

Service Parts Diagrams Revision History

Revision 1 - November, 2012

- New document

Revision 2 - August, 2013

- Add 1017286, 1018052 and 1020749
- Remove 20-01392-20 and SMP-UpK

Revision 3 - October, 2013

- Change 1020749 to GW-MPPE

Revision 4 - January, 2015

- Change 20-01393-20 to 1018068

Standard Warranty Terms

The projector and Appliance Control Panel (ACP) have a three-year limited equipment warranty. The appliance has a two-year limited equipment warranty. The UF75/UF75w projector lamp has a 1000 hour/one-year warranty. Your interactive whiteboard has a two-year limited equipment warranty or a five-year limited equipment warranty upon registration.

First Customer Ship: October, 2012

SMART Technologies

3636 Research Road NW
Calgary, AB T2L 1Y1
CANADA

Support +1.403.228.5940 or Toll Free 1.866.518.6791 (Canada/U.S.)

Support Fax +1.403.806.1256

www.smarttech.com/contactserviceparts www.smarttech.com

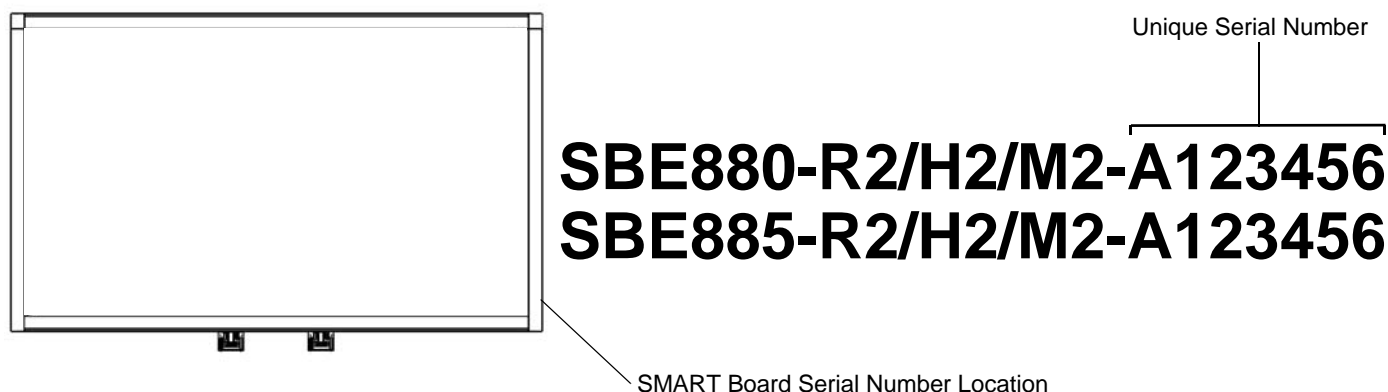


Service Parts Diagrams for the SB880i5e-SMP and SB885i5e-SMP

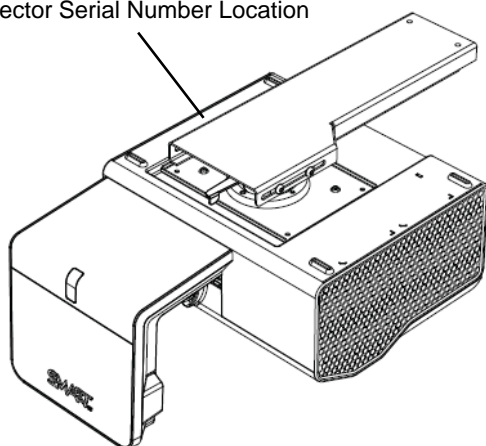
- Identifying Your Product Using the Serial Number 1
- Ordering Parts 1
- UF75/UF75w Parts 2
- SBX880 with Appliance (included with SB880i5e-SMP) 4
- Rear View SBX880 with Appliance (included with SB880i5e-SMP) 6
- SBX885 with Appliance (included with SB885i5e-SMP) 8
- Rear View SBX885 with Appliance (included with SB885i5e-SMP) 10
- Optional Composite Video Panel for SBX800 (Part No. SBX8-RCA) 12

Identifying Your Product Using the Serial Number

To make sure that you have the correct service parts diagrams, you must verify the serial number of your SMART Board 800 series interactive whiteboard with Appliance. The SMART Board serial number will be located on the side of the right hand bezel. When mounted, the projector serial number will be visible on the top of the projector. An example of the serial number format is shown below.



Projector Serial Number Location



Ordering Parts

Customers

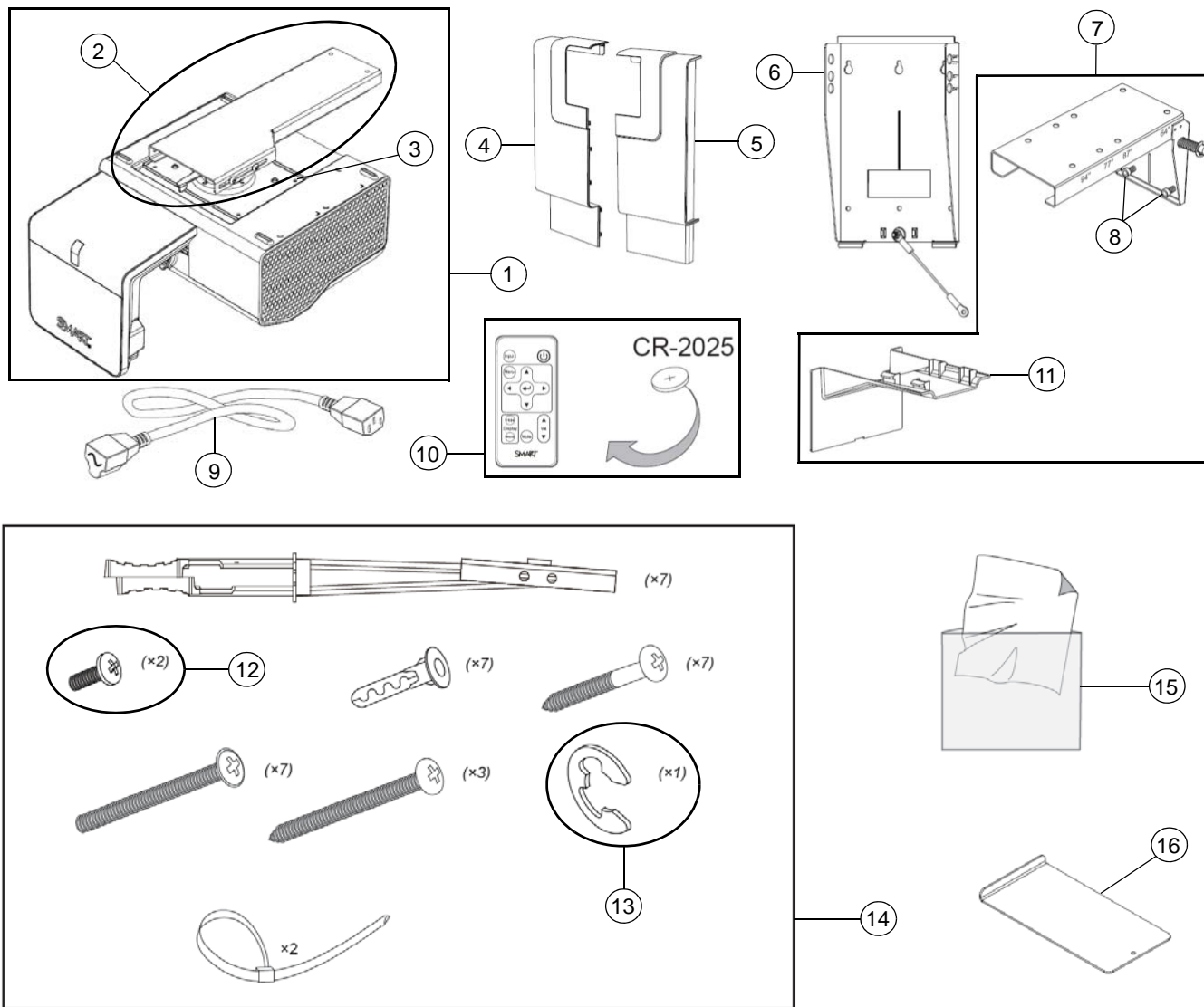
To order any of the parts in these service parts diagrams, contact your local reseller.
To find a reseller near you, visit www.smarttech.com/where.

Dealers and Distributors

For specific technical and pricing enquiries in regards to these diagrams please contact our service parts department.
Pricing is also available on-line via the SOURCE website (source.smarttech.com).

Web Form: www.smarttech.com/contactserviceparts
Phone: 1.888.42.SMART
International: +1.403.245.0333

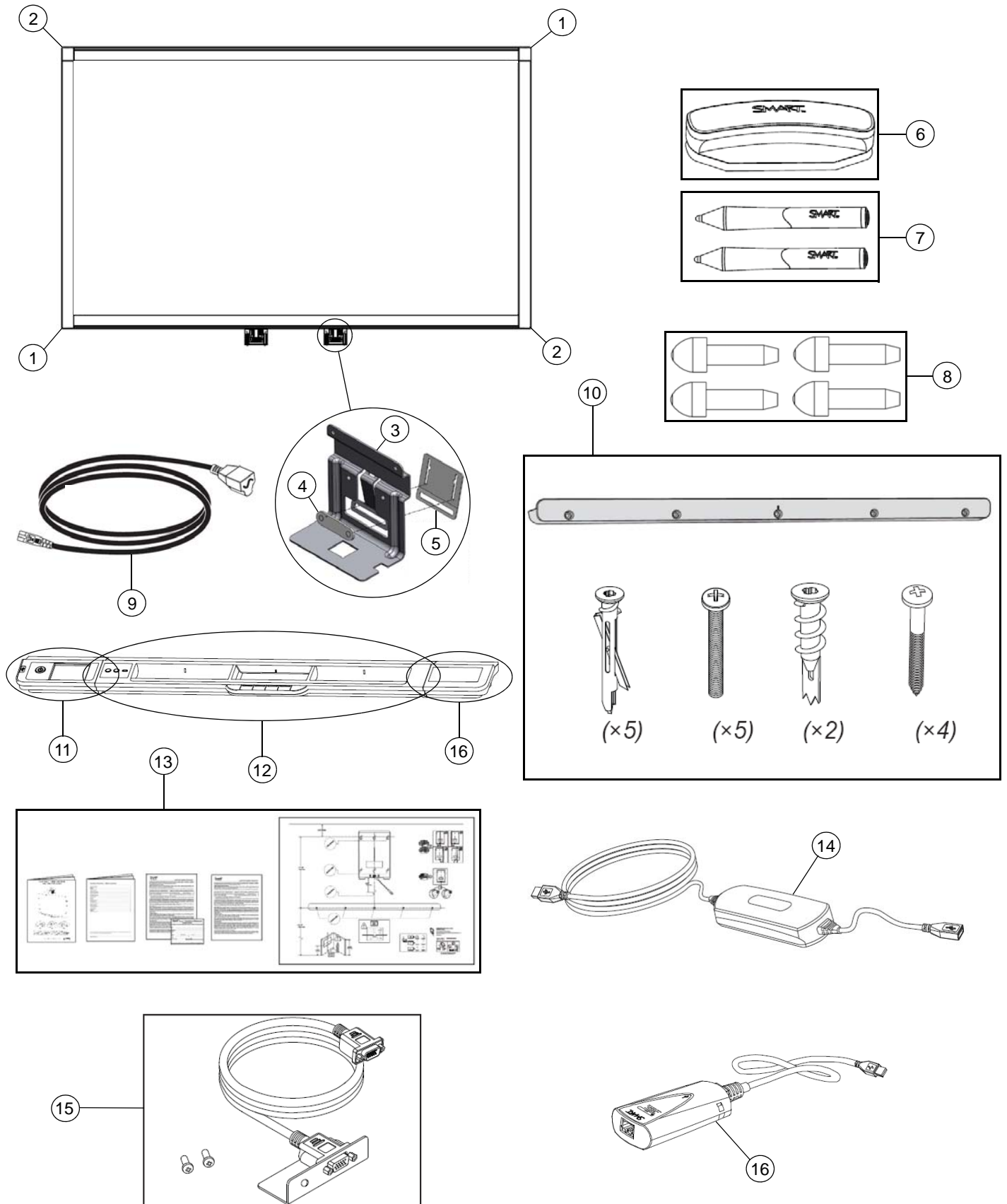
UF75/UF75w Parts



Item	Part No.	Qty	Description
1	FRU-UF75-PJR	1	FRU, UF75 projector only NOTE: Includes projector and items 2, 3.
1	FRU-UF75w-PJR	1	FRU, UF75w projector only NOTE: Includes projector and items 2, 3.
2	1018068	1	Assembly, boom, front, UF75/UF75w NOTE: Comes attached to the UF75/UF75w projector.
3	30-01279-20	4	Screw, M4 x 8 mm, Phillips, pan head NOTE: For attaching item 2 to UF75/UF75w projector.
4	52-00752-20	1	Cover, wall mount, left, UF75/UF75w
5	52-00751-20	1	Cover, wall mount, right, UF75/UF75w
6	1018052	1	Assembly, wall plate, UF75/UF75w
7	1017286	1	Assembly, boom, rear, UF75/UF75w NOTE: Includes items 7, 8 and 11.

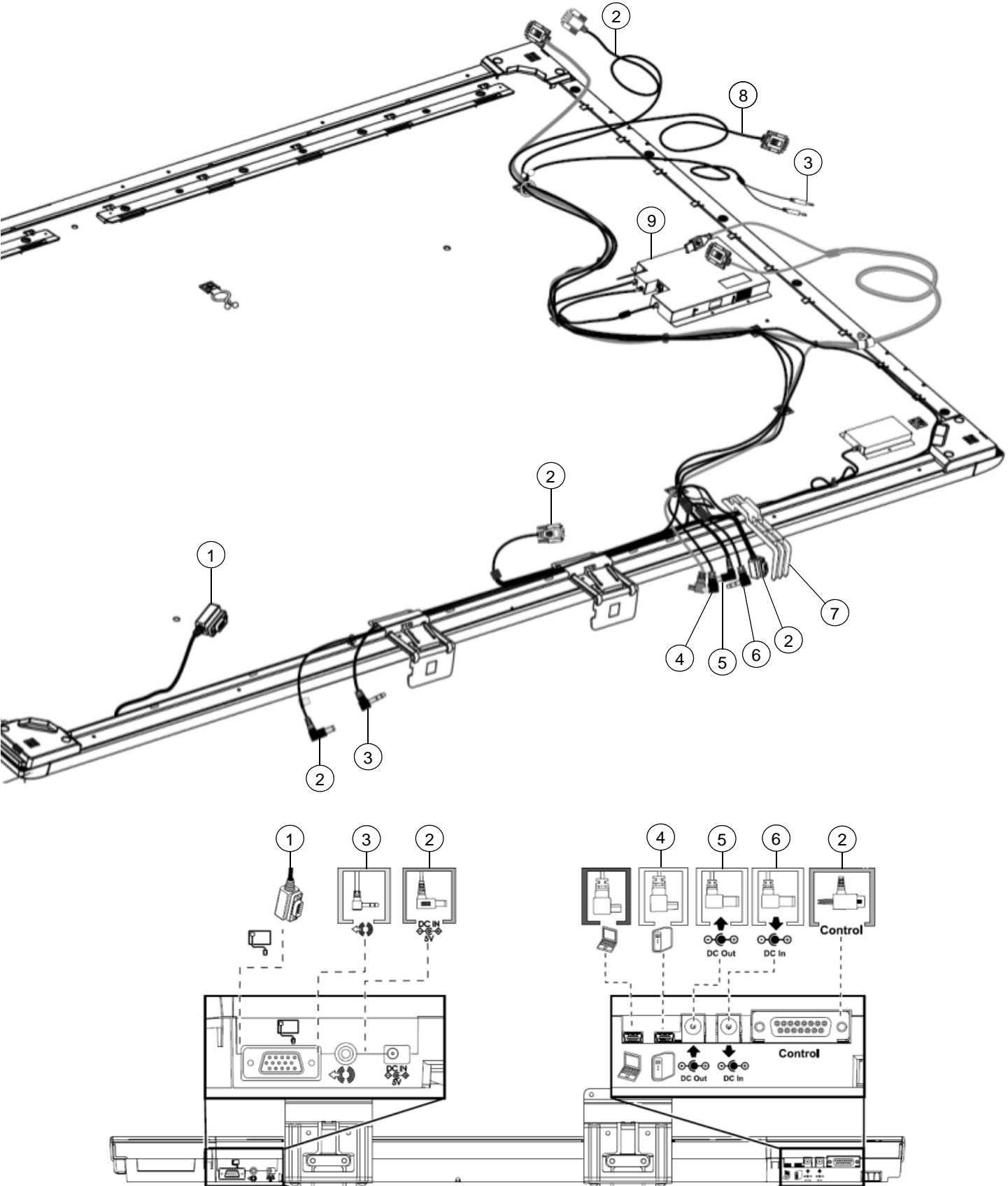
8	30-01401-20	2	Screw, M6 x 35 mm, hex socket, cap head
9	93-00630-20	1	Cable, power, North America, 14' 9" (4.5 m)
9	93-00632-20	1	Cable, power, United Kingdom, 14' 9" (4.5 m)
9	93-00631-20	1	Cable, power, Europe, 14' 9" (4.5 m)
9	93-00629-20	1	Cable, power, Australia, 14' 9" (4.5 m)
9	93-00634-20	1	Cable, power, Japan, 14' 9" (4.5 m)
9	93-00633-20	1	Cable, power, China, 14' 9" (4.5 m)
9	93-00670-20	1	Cable, power, Korea, 14' 9" (4.5 m)
10	03-00131-20	1	Remote control NOTE: Battery not included with replacement remotes.
11	52-00762-20	1	Cover, wire, UF75/UF75w
12	30-01402-20	2	Screw, M6 x 12 mm, Phillips, button head NOTE: For attaching UF75/UF75w projector to rear boom assembly.
13	30-01379-20	1	E-clip, 1/2"
14	20-01395-20	1	Assembly, mounting hardware kit, UF75/UF75w
15	01-00273-20	1	Cloth, cleaning
16	20-01557-20	1	Assembly, spacer, boom mount, UF75/UF75w
Not shown	52-00765-20	1	Door, lamp cover, UF75/UF75w NOTE: Comes attached to the UF75/UF75w projector.
Not shown	20-01501-20	1	Replacement Lamp for UF75 and UF75w Projectors

SBX880 with Appliance (included with SB880i5e-SMP)



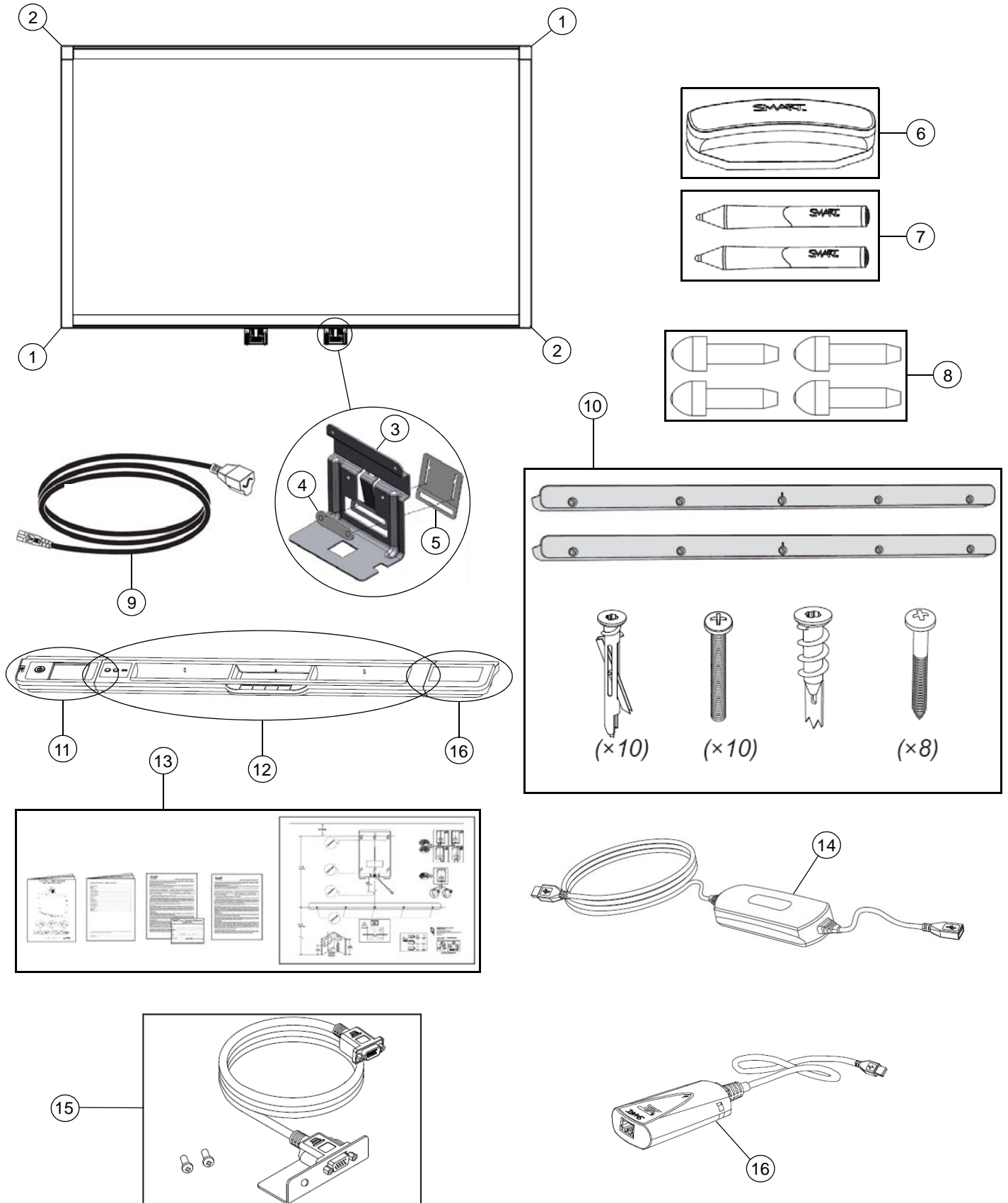
Item	Part No.	Qty	Description
1	FRU-CAM2-SBX880-A	2	FRU, camera A, revision 2, SBX880, position 0 and 2
2	FRU-CAM2-SBX880-B	2	FRU, camera B, revision 2, SBX880, position 1 and 3
3	51-00817-20	2	Bracket, mounting, pen tray
4	51-00946-20	2	Bracket, locking, pen tray
5	51-00945-20	2	Bracket, extension, pen tray
6	RERASER-SBX8	1	Replacement Eraser for SMART Board X800 Series
7	RPEN-SBX8-MP	1	Replacement Pens for SMART Board X800 Series for Business - Set of Two
8	FRU-NIB-SBX8	1	Replacement Nibs for SBX8 Pen - Set of Four
9	93-00751-20	1	Cable, power, North America, 14'9" (4.5 m)
9	93-00752-20	1	Cable, power, United Kingdom, 14'9" (4.5 m)
9	93-00753-20	1	Cable, power, Europe, 14'9" (4.5 m)
9	93-00754-20	1	Cable, power, Australia, 14'9" (4.5 m)
9	93-00755-20	1	Cable, power, Japan, 14'9" (4.5 m)
9	93-00756-20	1	Cable, power, China, 14'9" (4.5 m)
9	93-00757-20	1	Cable, power, Korea, 14'9" (4.5 m)
9	93-00842-20	1	Cable, power, Brazil, 14'9" (4.5 m)
9	93-00843-20	1	Cable, power, India, 14'9" (4.5 m)
10	FRU-SBX8WM	1	FRU, SBX8, wall mounting kit
11	FRU-MODULE -ACP-SBX8	1	FRU, appliance control panel pen tray module, SBX8 NOTE: FRU-PT14-2 is not included.
12	FRU-PT14-2	1	FRU, pen tray, PT14, revision 2 NOTE: FRU-MODULE-ACP-SBX8 and SBX800 CAT5-XT are not included.
13	1018080	1	Assembly, documentation kit, appliance, i5 NOTE: Includes mounting template and installation guide.
14	GW-MPPE	1	SMART GoWire auto-launch cable with Meeting Pro Personal Edition
15	20-01496-20	1	Assembly, video connector kit for SBX8 series
16	SBX800 CAT5-XT	1	Cat 5 to USB Extender for SMART Board X800 Series Interactive Whiteboard NOTE: Includes pen tray and computer modules.
Not shown	52-00683-20	1	Bracket, backboard hanger NOTE: Comes attached to the back of the SMART Board.
Not shown	52-00669-21	2	Cover, back, camera, position 0 and 2
Not shown	52-00668-21	2	Cover, back, camera, position 1 and 3
Not shown	1013718	1	Cable, harness, pen tray to cameras, SBX880 NOTE: Connects camera 0, 1, 2, and 3 to the pen tray.
Not shown	FRU-PKG-SBX880	1	FRU, packaging, SBX880 SMART Board Interactive Whiteboard

Rear View SBX880 with Appliance (included with SB880i5e-SMP)



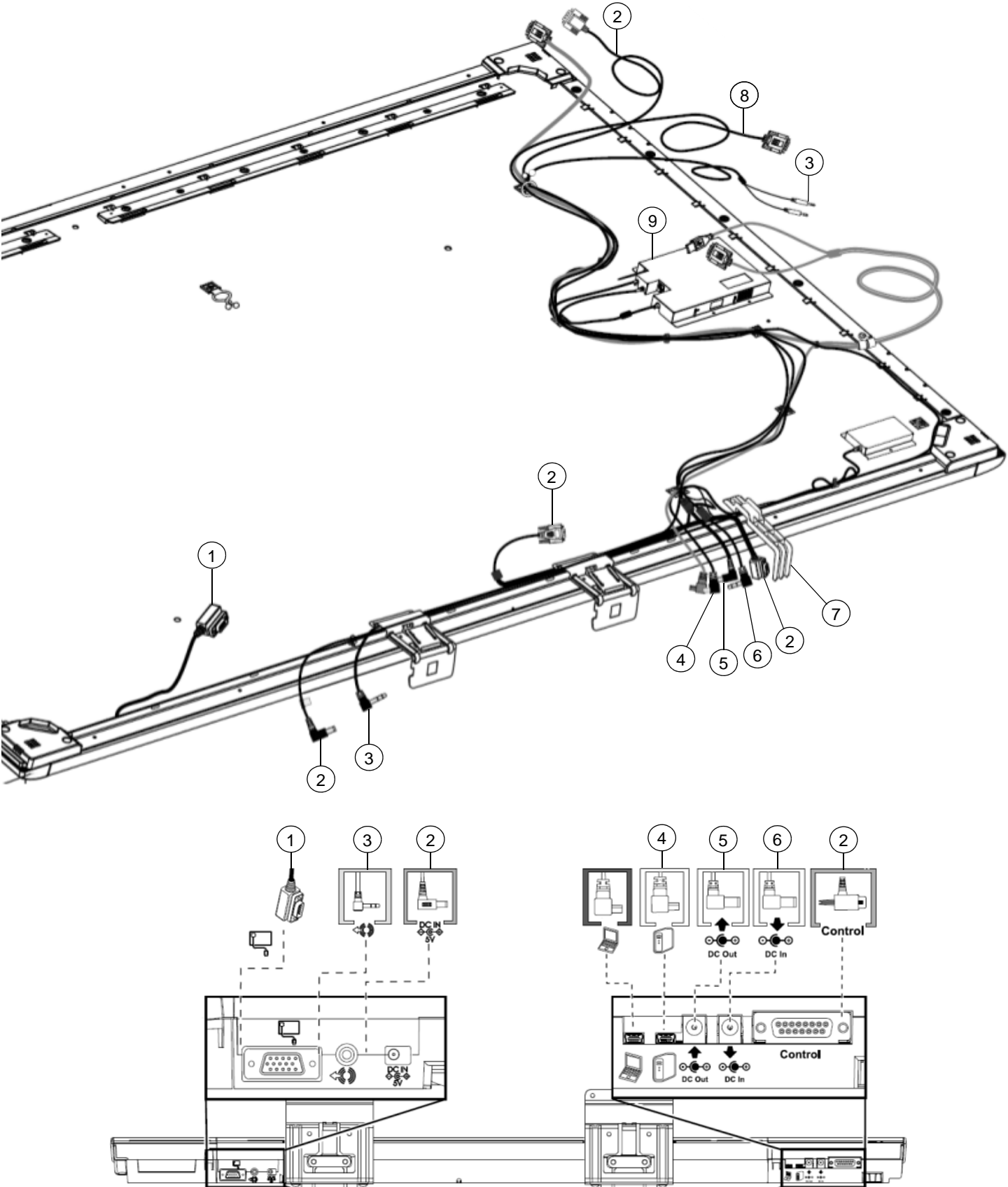
Item	Part No.	Qty	Description
1	1013718	1	Cable, harness, pen tray to cameras, SBX880 NOTE: Connects camera 0, 1, 2, and 3 to the pen tray.
2	93-00802-23	1	Cable, harness, control/power, appliance control panel (ACP), 13'10" (4.2 m) NOTE: - Connects control on the appliance pen tray module to the projector. - Connects external room control system to the projector. - Connects power input on the pen tray to the appliance pen tray module.
3	93-00856-20	1	Cable, audio, right angle 3.5 mm male to dual 3.5 mm male, 13'6" (4.1 m) NOTE: Connects audio output on the pen tray to the projector.
4	93-00826-20	1	Cable, right angle USB Mini-B to USB A, 6'3" (1.9 m) NOTE: Connects USB on the appliance pen tray module to the appliance.
5	93-00805-21	1	Cable, power, appliance, 4'7" (1.4 m) NOTE: Connects power output on the appliance pen tray module to the power input of the appliance.
6	60-00062-20	1	Power supply, 19V DC, 4.2A, universal switching NOTE: Connects to the power input on the appliance pen tray module.
7	52-00731-20	1	Bracket, support, appliance control panel (ACP)
8	93-00827-21	1	Cable, video, HD15 male to HD15 male, 8' (2.45 m) NOTE: Connects video output on the appliance to the projector.
9	FRU-APPLIANCE-SBX8	1	FRU, appliance, SBX8

SBX885 with Appliance (included with SB885i5e-SMP)



Item	Part No.	Qty	Description
1	FRU-CAM2-SBX885-A	2	FRU, camera A, revision 2, SBX885, position 0 and 2
2	FRU-CAM2-SBX885-B	2	FRU, camera B, revision 2, SBX885, position 1 and 3
3	51-00817-20	2	Bracket, mounting, pen tray
4	51-00946-20	2	Bracket, locking, pen tray
5	51-00945-20	2	Bracket, extension, pen tray
6	RERASER-SBX8	1	Replacement Eraser for SMART Board X800 Series
7	RPEN-SBX8-MP	1	Replacement Pens for SMART Board X800 Series for Business - Set of Two
8	FRU-NIB-SBX8	1	Replacement Nibs for SBX8 Pen - Set of Four
9	93-00751-20	1	Cable, power, North America, 14'9" (4.5 m)
9	93-00752-20	1	Cable, power, United Kingdom, 14'9" (4.5 m)
9	93-00753-20	1	Cable, power, Europe, 14'9" (4.5 m)
9	93-00754-20	1	Cable, power, Australia, 14'9" (4.5 m)
9	93-00755-20	1	Cable, power, Japan, 14'9" (4.5 m)
9	93-00756-20	1	Cable, power, China, 14'9" (4.5 m)
9	93-00757-20	1	Cable, power, Korea, 14'9" (4.5 m)
9	93-00842-20	1	Cable, power, Brazil, 14'9" (4.5 m)
9	93-00843-20	1	Cable, power, India, 14'9" (4.5 m)
10	FRU-SBX8WM	2	FRU, SBX8, wall mounting kit
11	FRU-MODULE -ACP-SBX8	1	FRU, appliance control panel pen tray module, SBX8 NOTE: FRU-PT14-2 is not included.
12	FRU-PT14-2	1	FRU, pen tray, PT14, revision 2 NOTE: FRU-MODULE-ACP-SBX8 and SBX800 CAT5-XT are not included.
13	1018080	1	Assembly, documentation kit, appliance, i5 NOTE: Includes mounting template and installation guide.
14	GW-MPPE	1	SMART GoWire auto-launch cable with Meeting Pro Personal Edition
15	20-01496-20	1	Assembly, video connector kit for SBX8 series
16	SBX800 CAT5-XT	1	Cat 5 to USB Extender for SMART Board X800 Series Interactive Whiteboard NOTE: Includes pen tray and computer modules.
Not shown	52-00683-20	2	Bracket, backboard hanger NOTE: Comes attached to the back of the SMART Board.
Not shown	52-00669-21	2	Cover, back, camera, position 0 and 2
Not shown	52-00668-21	2	Cover, back, camera, position 1 and 3
Not shown	1013719	1	Cable, harness, pen tray to cameras, SBX885 NOTE: Connects camera 0, 1, 2, and 3 to the pen tray.
Not shown	FRU-PKG-SBX885	1	FRU, packaging, SBX885 SMART Board Interactive Whiteboard

Rear View SBX885 with Appliance (included with SB885i5e-SMP)



Item	Part No.	Qty	Description
1	1013719	1	Cable, harness, pen tray to cameras, SBX885 NOTE: Connects camera 0, 1, 2, and 3 to the pen tray.
2	93-00802-23	1	Cable, harness, control/power, appliance control panel (ACP), 13'10" (4.2 m) NOTE: - Connects control on the appliance pen tray module to the projector. - Connects external room control system to the projector. - Connects power input on the pen tray to the appliance pen tray module.
3	93-00856-20	1	Cable, audio, right angle 3.5 mm male to dual 3.5 mm male, 13'6" (4.1 m) NOTE: Connects audio output on the pen tray to the projector.
4	93-00826-20	1	Cable, right angle USB Mini-B to USB A, 6'3" (1.9 m) NOTE: Connects USB on the appliance pen tray module to the appliance.
5	93-00805-21	1	Cable, power, appliance, 4'7" (1.4 m) NOTE: Connects power output on the appliance pen tray module to the power input of the appliance.
6	60-00062-20	1	Power supply, 19V DC, 4.2A, universal switching NOTE: Connects to the power input on the appliance pen tray module.
7	52-00731-20	1	Bracket, support, appliance control panel (ACP)
8	93-00827-21	1	Cable, video, HD15 male to HD15 male, 8' (2.45 m) NOTE: Connects video output on the appliance to the projector.
9	FRU-APPLIANCE-SBX8	1	FRU, appliance, SBX8

Optional Composite Video Panel for SBX800 (Part No. SBX8-RCA)

