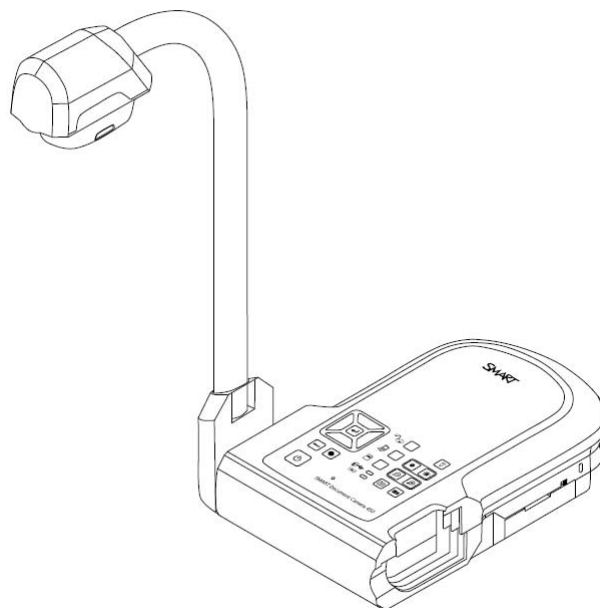


# SMART<sup>®</sup>



## ***Service Parts Diagrams***

**For Model:  
SDC-450**

## Service Parts Diagrams Revision History

### Revision 1 - February, 2013

- New document

### Revision 2 - February, 2017

- Change 1018832 to 1028022

### Standard Warranty Terms

Base product: Five-year limited equipment warranty

First Customer Ship: February, 2013

---

**SMART Technologies**

3636 Research Road NW  
Calgary, AB T2L 1Y1  
CANADA

Support +1.403.228.5940 or Toll Free 1.866.518.6791 (Canada/U.S.)

Support Fax +1.403.806.1256

[www.smarttech.com/contactserviceparts](http://www.smarttech.com/contactserviceparts) [www.smarttech.com](http://www.smarttech.com)



© 2017 SMART Technologies ULC. All rights reserved. SMART Board, smarttech and the SMART logo are trademarks or registered trademarks of SMART Technologies ULC in the U.S. and/or other countries. All other third-party product and company names are for identification purposes only and may be trademarks of their respective owners. Contents are subject to change without notice. 02/2017.

# Service Parts Diagrams for the SDC-450

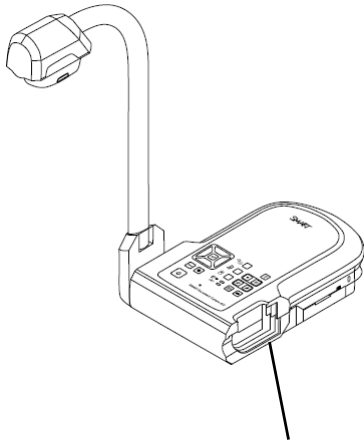
---

Identifying Your Product Using the Serial Number .....	1
Ordering Parts .....	1
SDC-450 Parts .....	3



## Identifying Your Product Using the Serial Number

To make sure that you have the correct service parts diagrams, you must verify the serial number of your SDC-450. The serial number is located on the bottom of the camera base. An example of the serial number format is shown below.



Serial Number Location

**A101EW40A0022**

Unique Serial Number

## Ordering Parts

### Customers

To order any of the parts in these service parts diagrams, contact your local reseller. To find a reseller near you, visit [www.smarttech.com/where](http://www.smarttech.com/where).

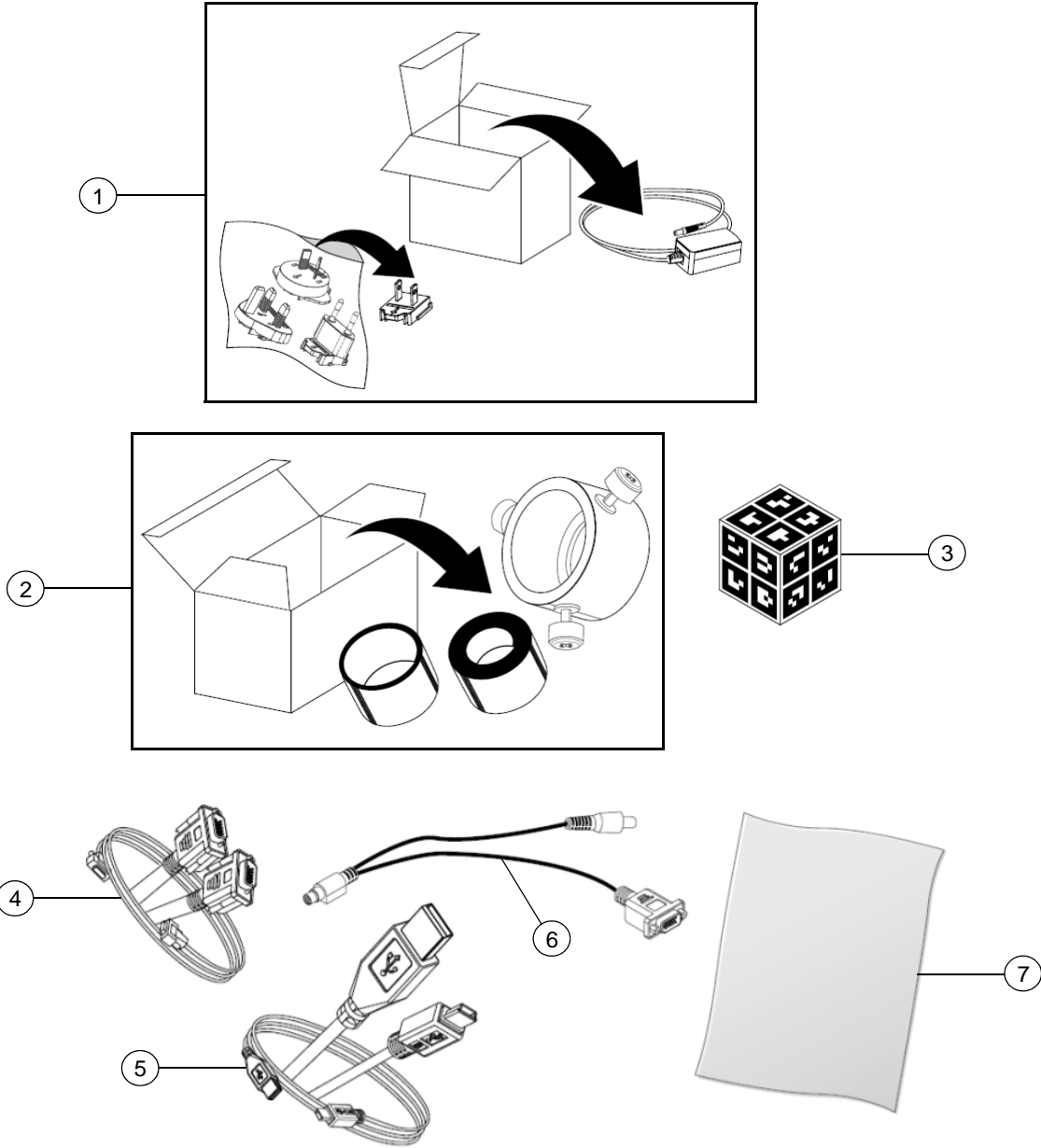
### Dealers and Distributors

For specific technical and pricing enquiries in regards to these diagrams please contact our service parts department. Pricing is also available on-line via the SOURCE website ([source.smarttech.com](http://source.smarttech.com)).

Web Form: [www.smarttech.com/contactserviceparts](http://www.smarttech.com/contactserviceparts)  
Phone: 1.888.42.SMART  
International: +1.403.245.0333



SDC-450 Parts



Item	Part No.	Qty	Description
1	1028022	1	Power supply kit, 12V DC, 2.0A, universal switching <b>NOTE:</b> Includes plug adapters for North America, United Kingdom, Europe and Australia
2	1018864	1	Microscope adapter kit
3	FRU-CUBE	1	FRU, Cube, Mixed Reality
4	1018853	1	Cable, video, HD15 male to HD15 male 6' (1.8 m)
5	1018855	1	Cable, USB A to USB Mini-B, 6' (1.8 m)
6	1018865	1	Cable, adapter, RS-232/composite video, 6" (15 cm)
7	1018863	1	Sheet, anti-glare