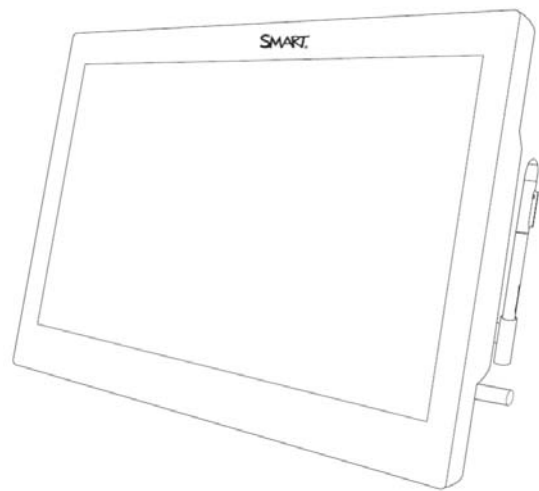


# SMART<sup>®</sup>



## ***Service Parts Diagrams***

**For Model:  
SP624/SP624P**

# Service Parts Diagrams Revision History

## Revision 1 - August, 2018

- New document

## RStandard Warranty Terms

Base product: Three-year limited equipment warranty

First Customer Ship: June, 2018

---

**SMART Technologies**

3636 Research Road NW

Calgary, AB T2L 1Y1

CANADA

Support +1.403.228.5940 or Toll Free 1.866.518.6791 (Canada/U.S.)

Support Fax +1.403.806.1256

[www.smarttech.com/contactserviceparts](http://www.smarttech.com/contactserviceparts) [www.smarttech.com](http://www.smarttech.com)



# **Service Parts Diagrams for the SP624/SP624P**

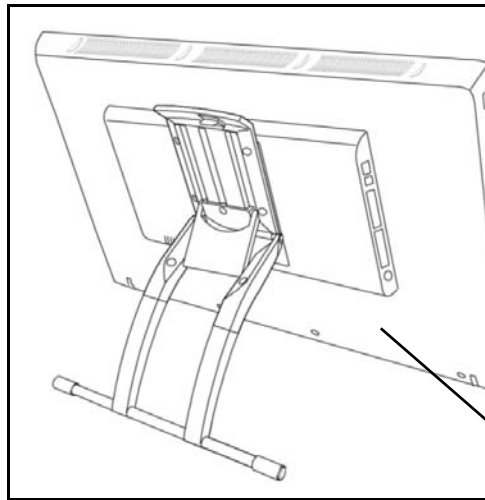
---

**Identifying Your Product Using the Serial Number ..... 1**  
**Ordering Parts ..... 1**  
**SP624/SP624P Parts ..... 3**



## Identifying Your Product Using the Serial Number

To make sure that you have the correct service parts diagrams, you must verify the serial number of your SP624/SP624P. The serial number is located on the back of the Podium. An example of the serial number format is shown below.



**W021KW21A0279**

Unique Serial Number

Serial Number Location

## Ordering Parts

### Customers

To order any of the parts in these service parts diagrams, contact your local reseller. To find a reseller near you, visit [www.smarttech.com/where](http://www.smarttech.com/where).

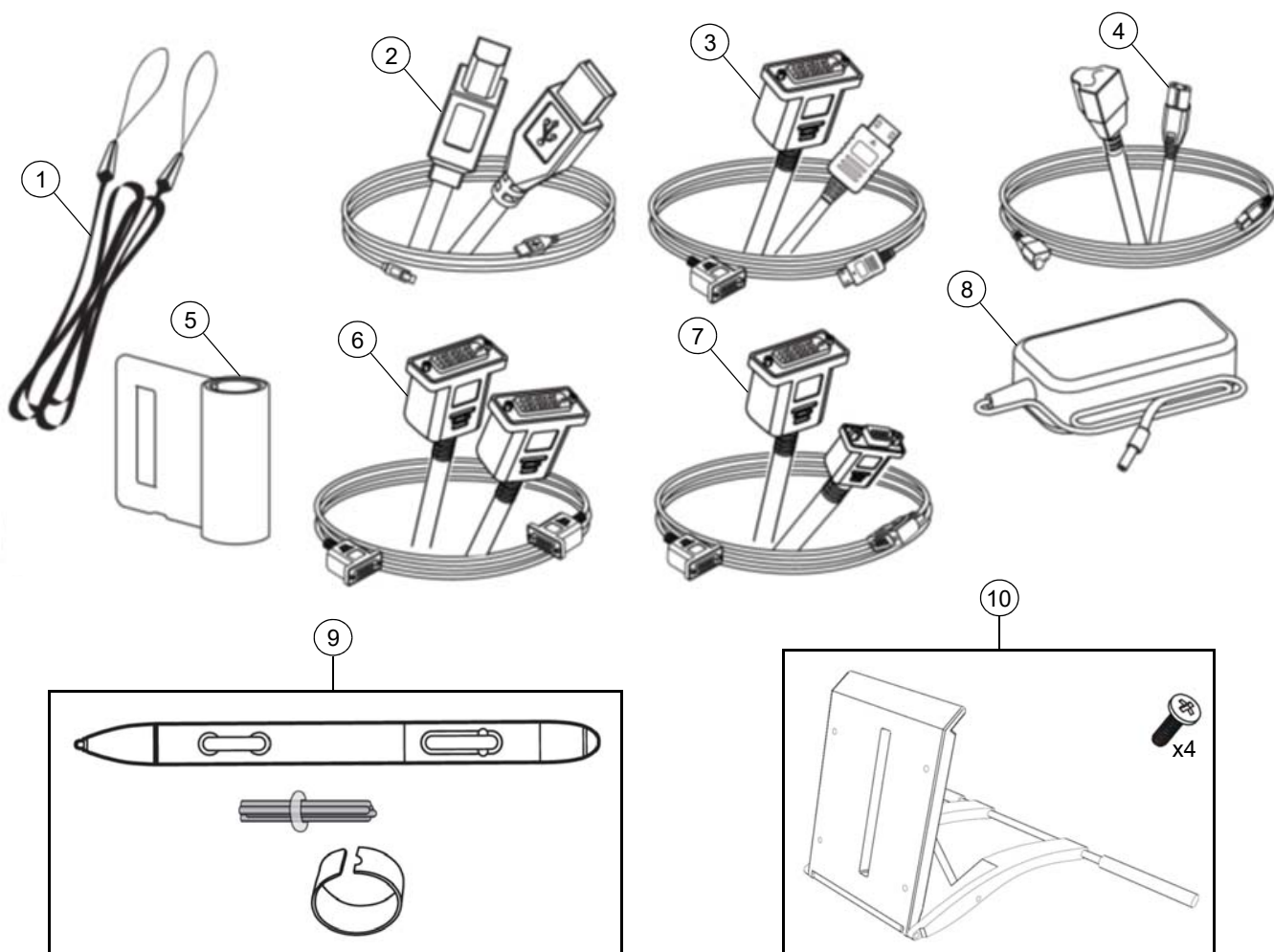
### Dealers and Distributors

For specific technical and pricing enquiries in regards to these diagrams please contact our service parts department. Pricing is also available on-line via the SOURCE website ([source.smarttech.com](http://source.smarttech.com)).

Web Form: [www.smarttech.com/contactserviceparts](http://www.smarttech.com/contactserviceparts)  
Phone: 1.888.42.SMART  
International: +1.403.245.0333



## SP624/SP624P Parts



Item	Part No.	Qty	Description
1	1031819	1	Tether, pen, SP624
2	1031817	1	Cable, USB, A-B, 6'7" (2.0 m)
3	1031816	1	Cable, video, HDMI to DVI-D, 6'7" (2.0 m)
4	93-051	1	Cable, power, North America, 8' (2.4 m)
4	93-055	1	Cable, power, United Kingdom, 8' (2.4 m)
4	93-00654-20	1	Cable, power, Japan, 8' (2.4 m)
4	93-056	1	Cable, power, Autstralia, 8' (2.4 m)
4	93-054	1	Cable, power, Europe, 8' (2.4 m)
5	1031820	1	Holder, pen, SP624
6	1031814	1	Cable, video, DVI-D to DVI-D, 6'7" (2.0 m)
7	1031815	1	Cable, video, VGA to DVI, 6'7" (2.0 m)
8	1031818	1	Power supply, Podium, SP624
9	1031067	1	Assembly, pen, Podium, SP624
10	1031821	1	Assembly, stand, Podium, SP624 <b>NOTE:</b> Includes mounting screws.