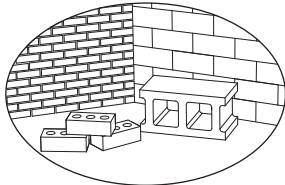
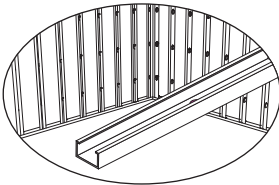
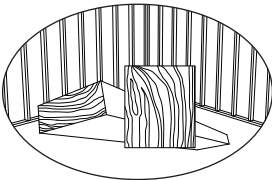
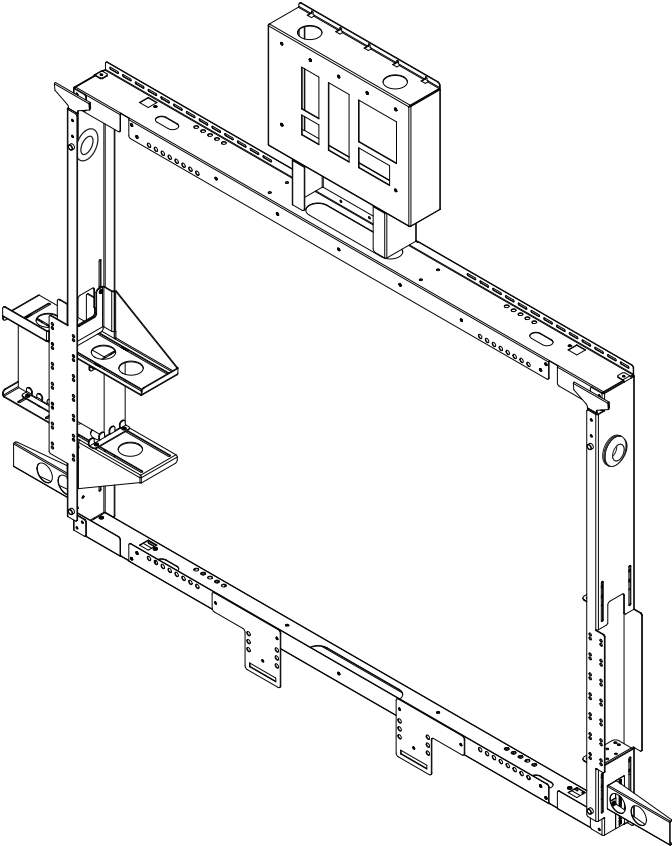


FUWM-600 Computer



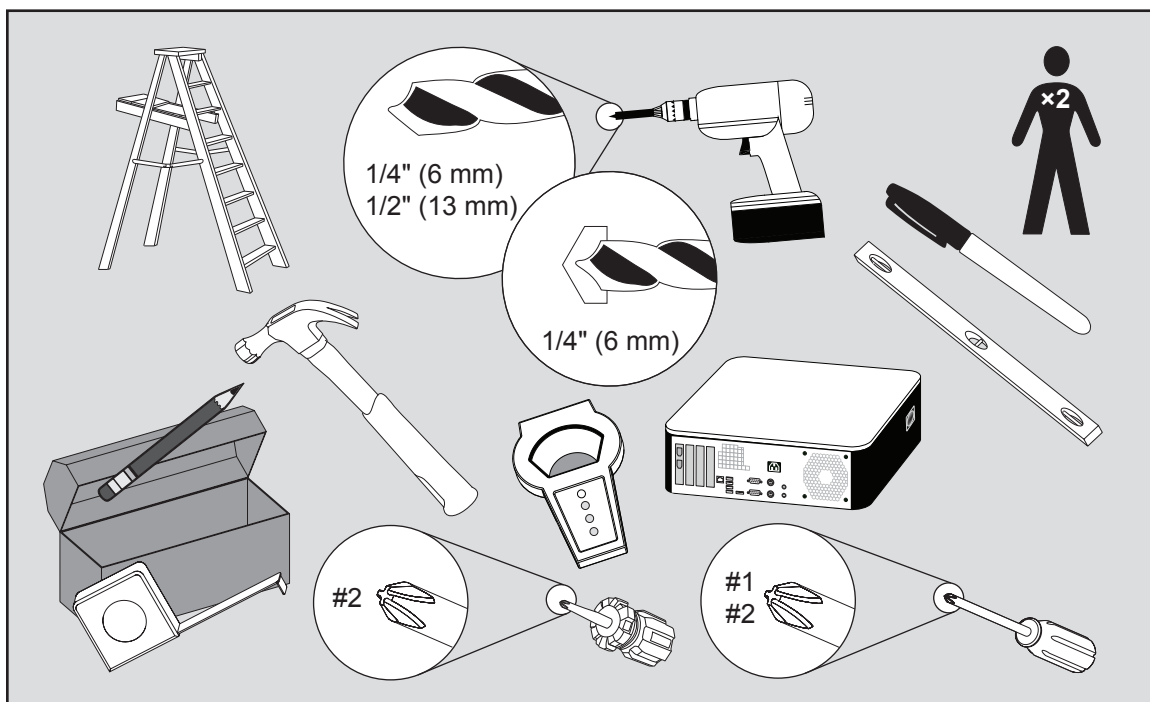
SMARTTM




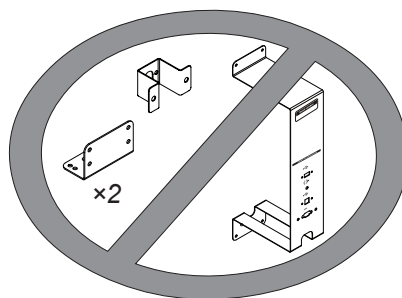
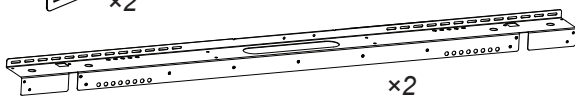
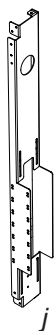
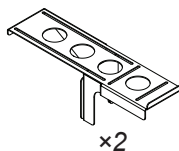
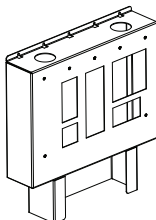
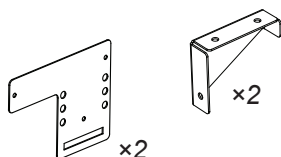
Check your local building code to ensure your wall can support the combined weight of the FUWM-600 and all installed components.



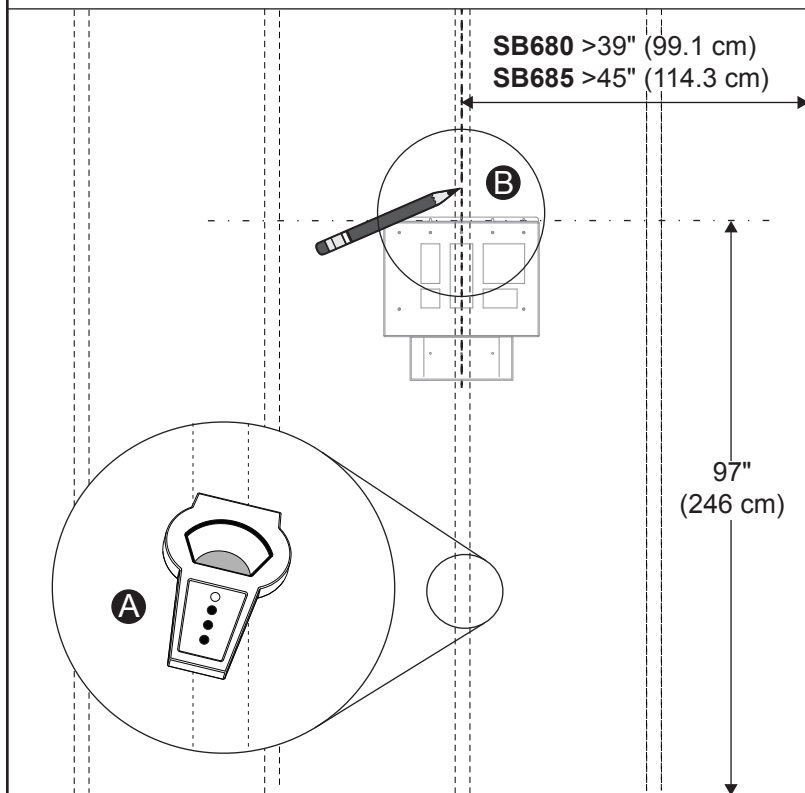
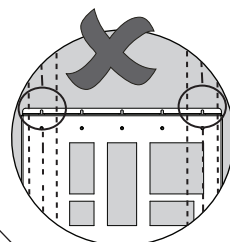
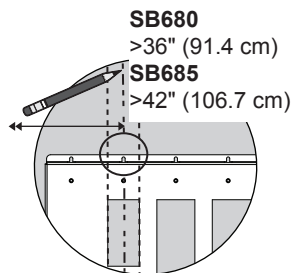
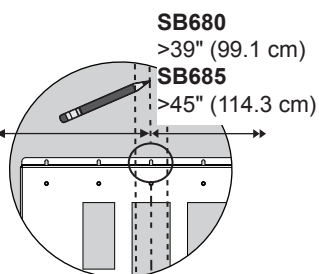
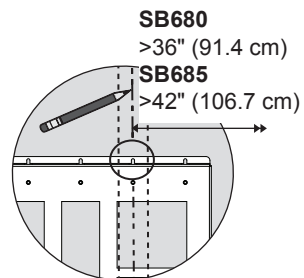
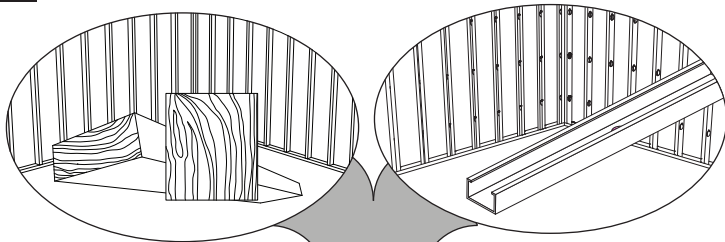
Refer to the appropriate SMART Board™ 685 or 680 interactive whiteboard icon to determine which set of instructions to follow.



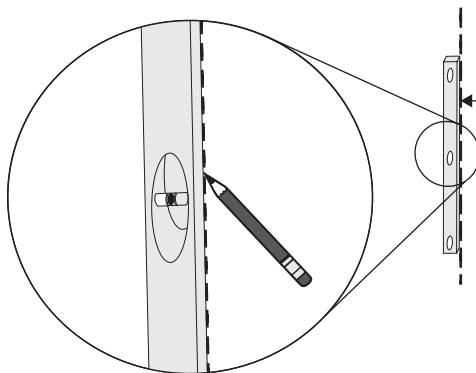
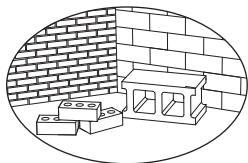
A line drawing showing a rectangular frame with a hinged lid. A large curved arrow points from the lid towards the front panel, indicating the next step in assembly.



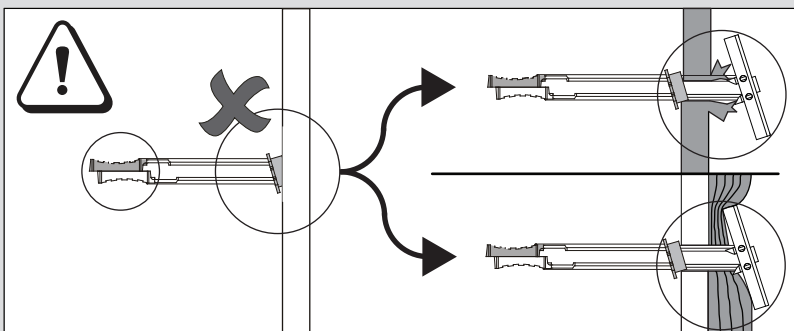
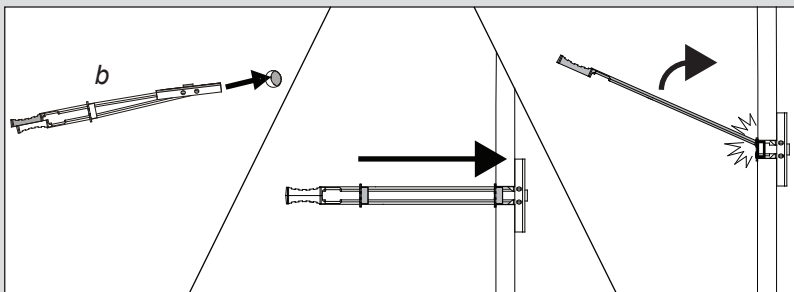
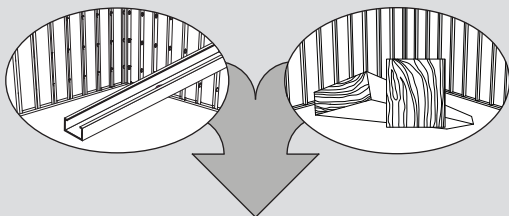
1

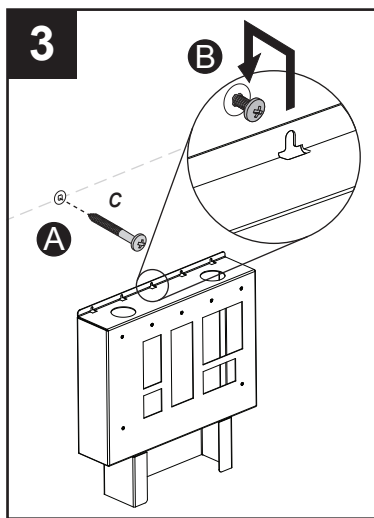
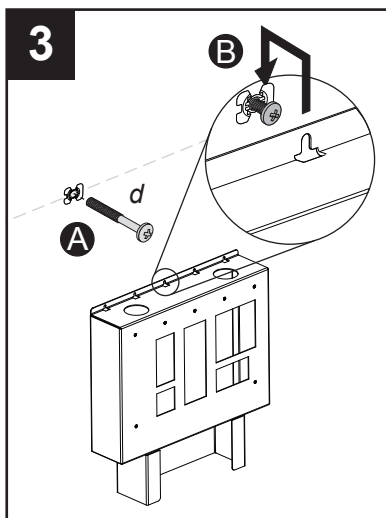
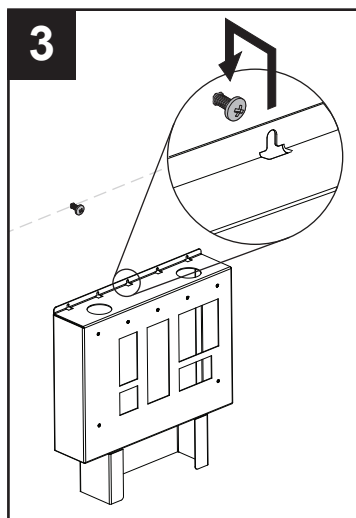
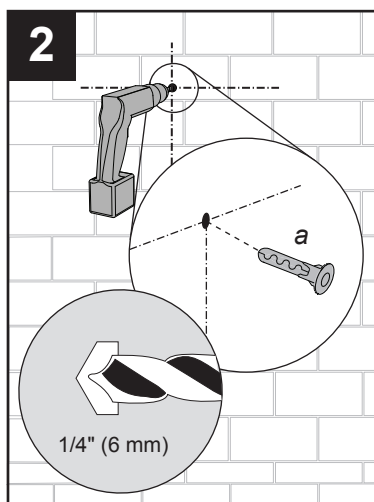
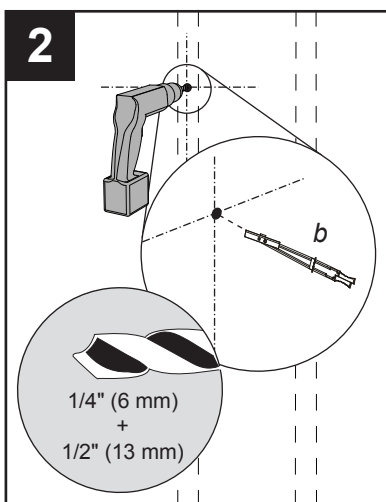
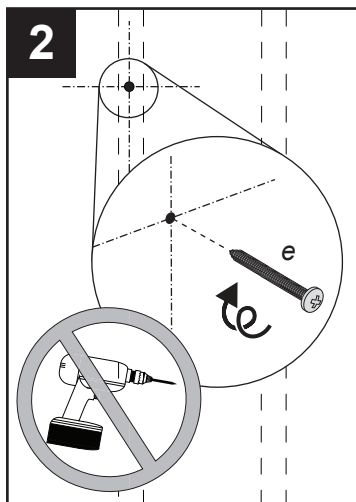
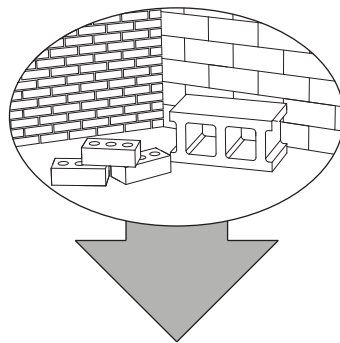
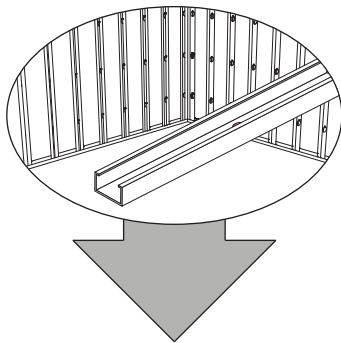
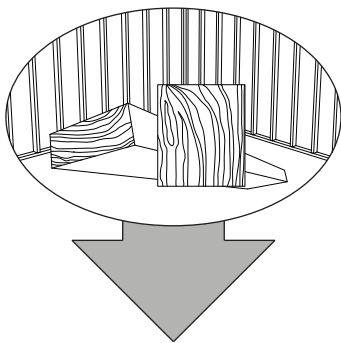


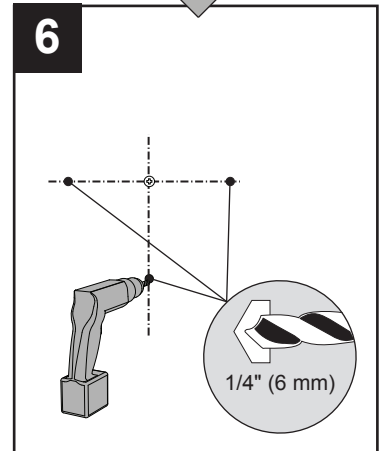
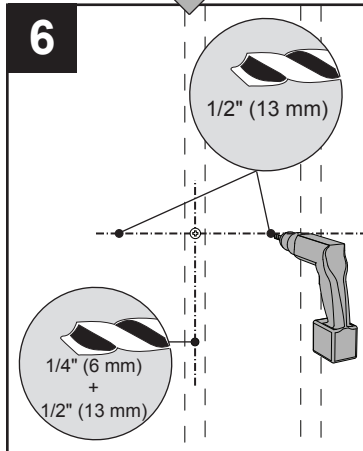
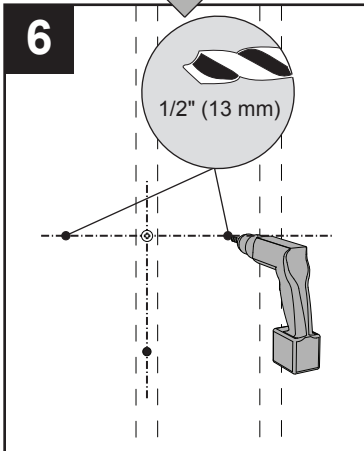
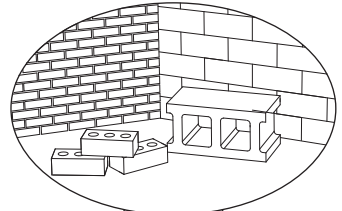
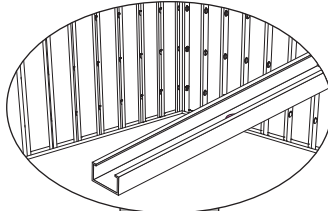
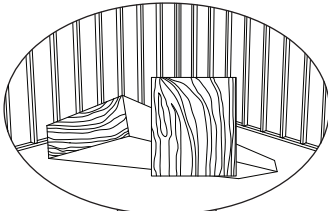
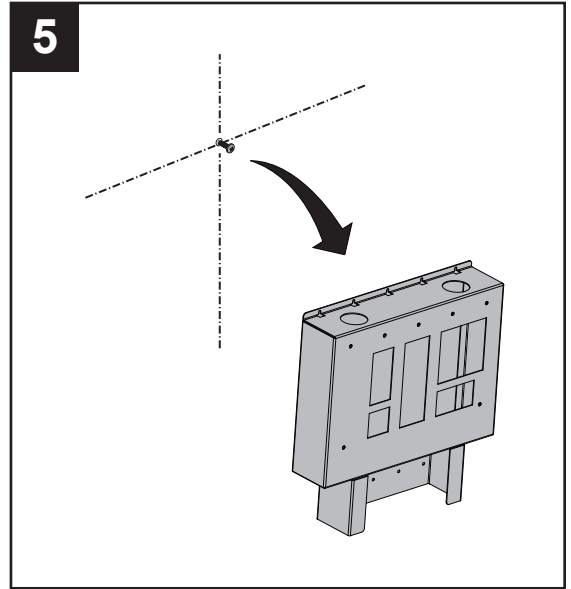
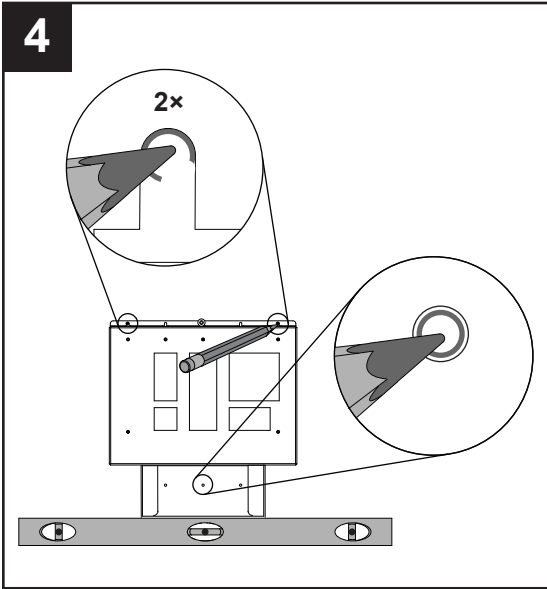
1

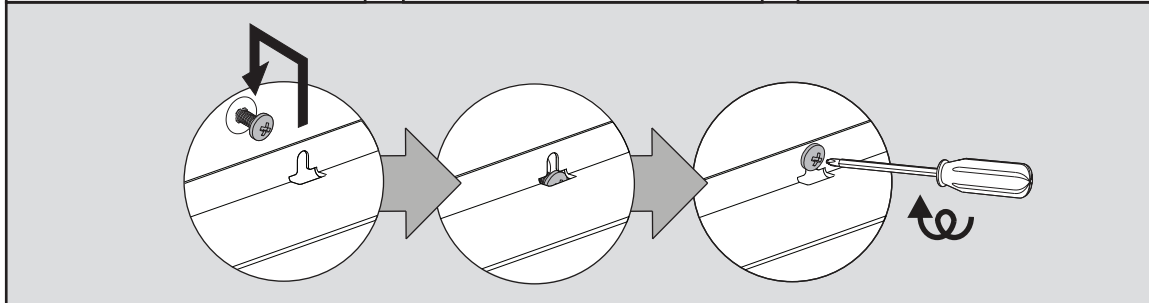
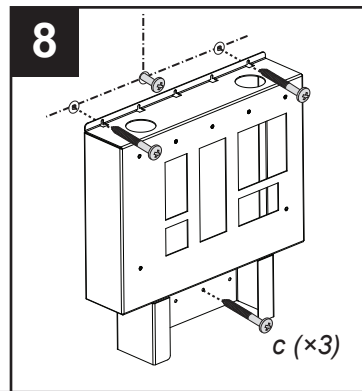
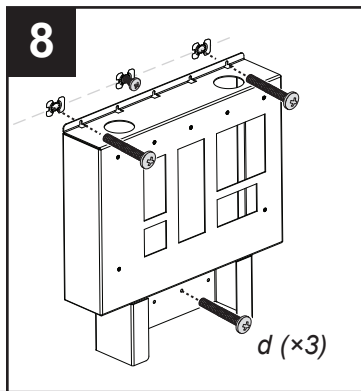
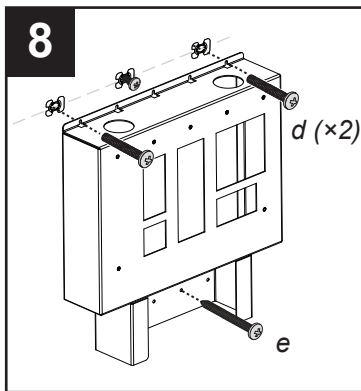
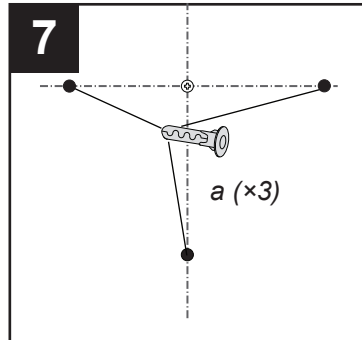
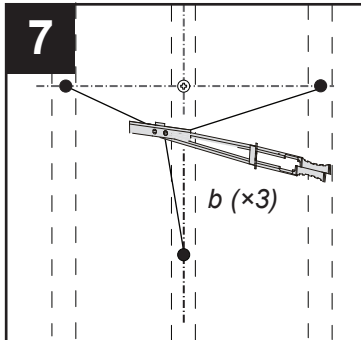
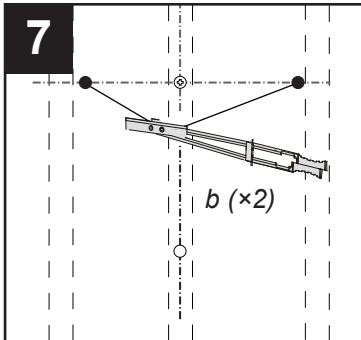
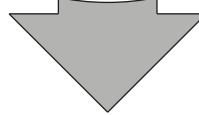
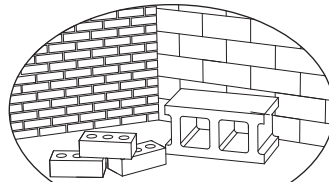
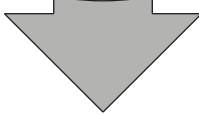
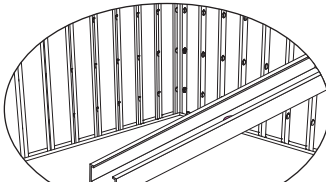
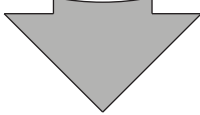
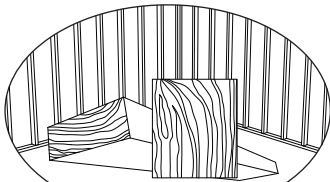


97"
(246 cm)

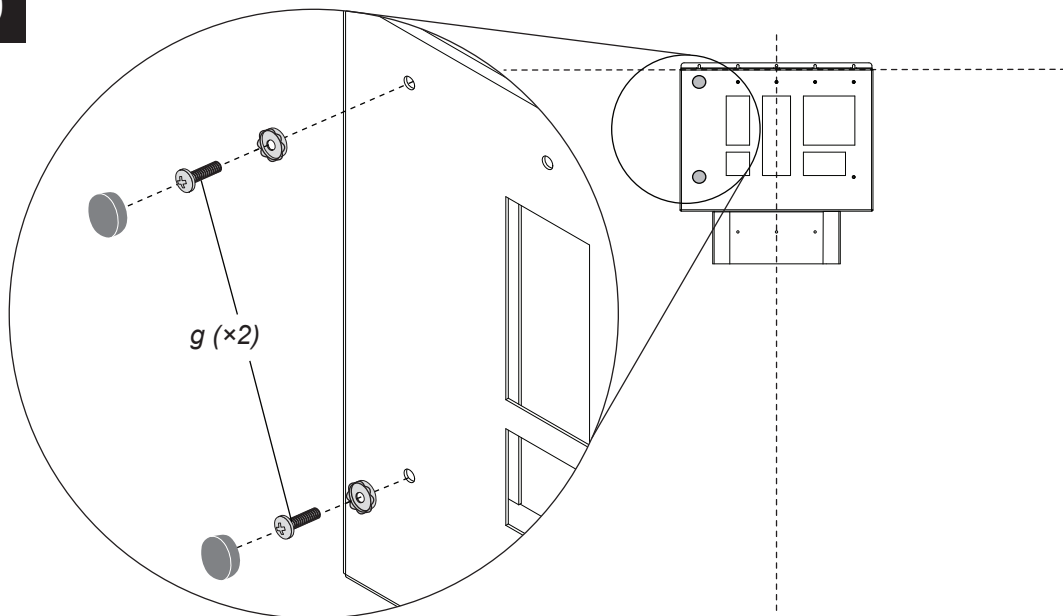




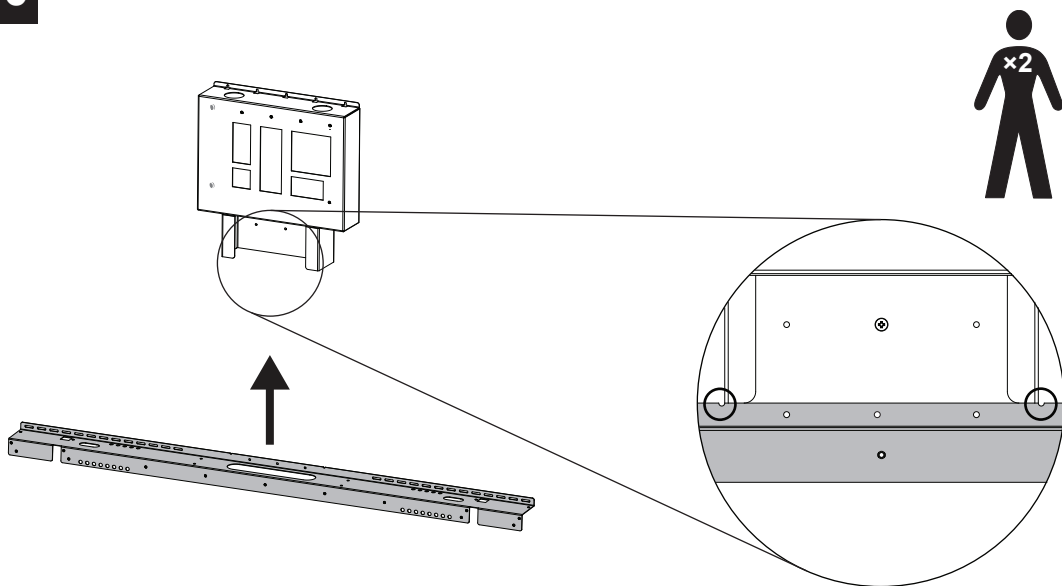


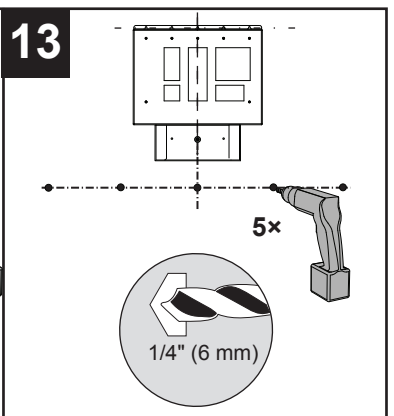
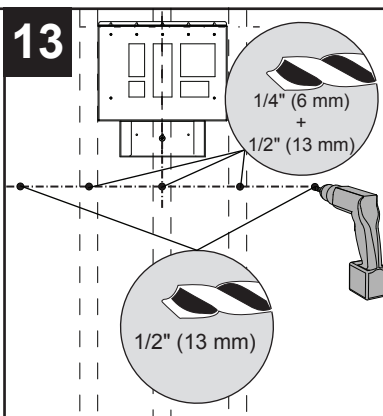
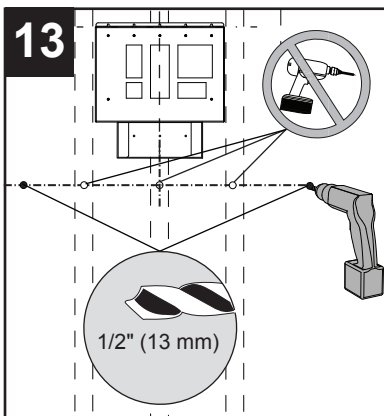
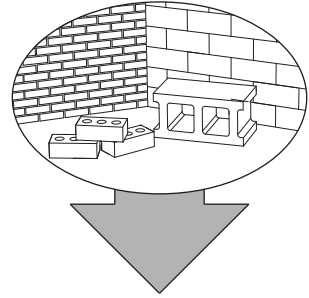
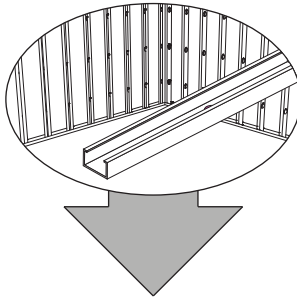
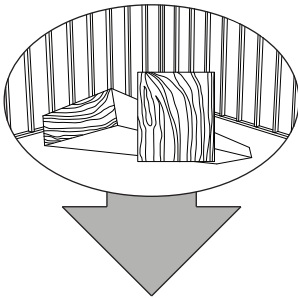
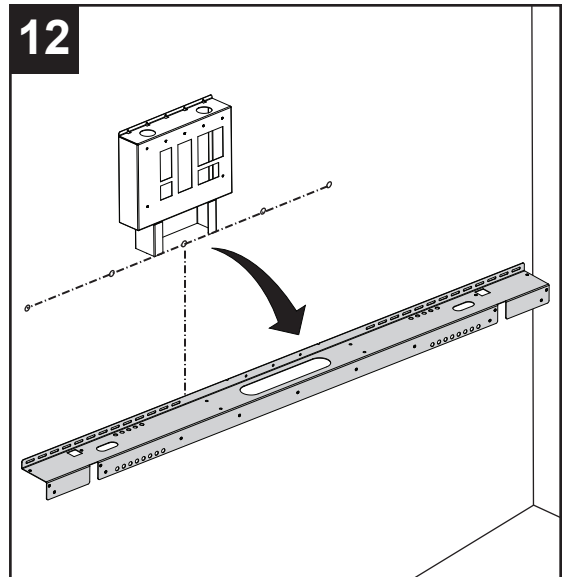
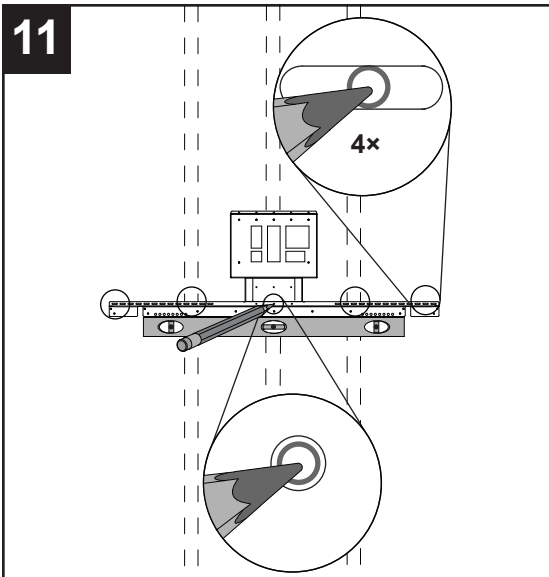


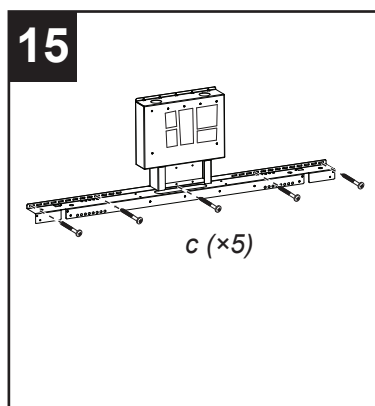
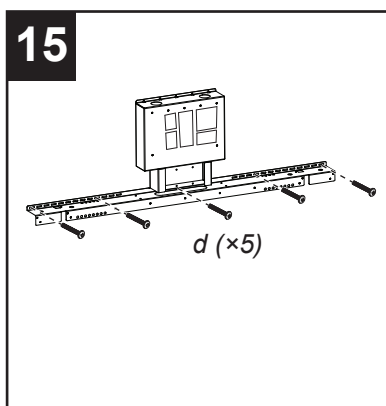
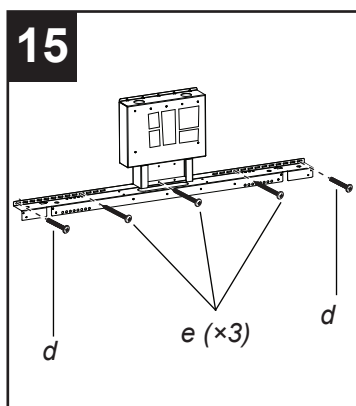
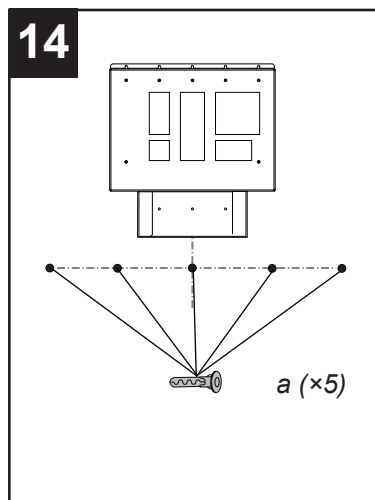
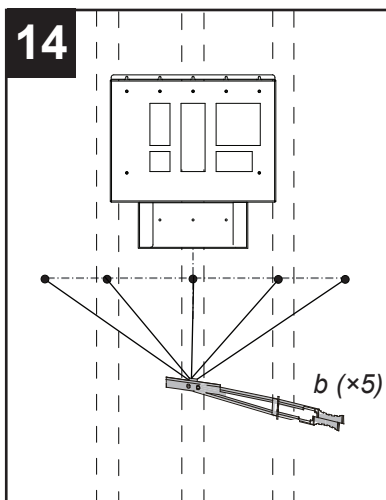
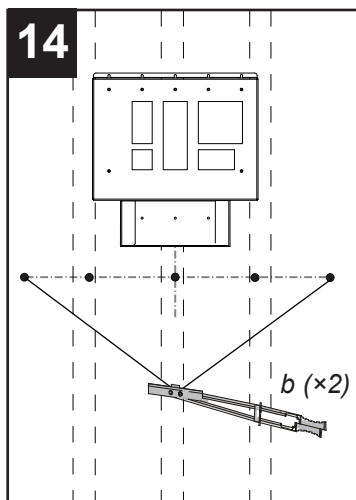
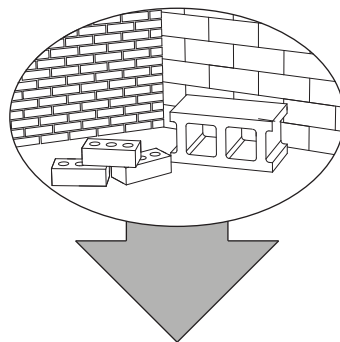
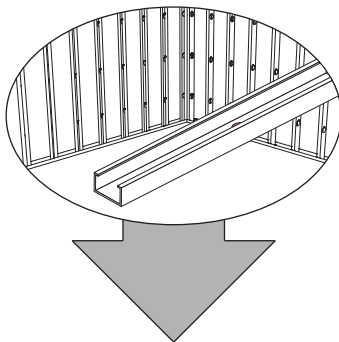
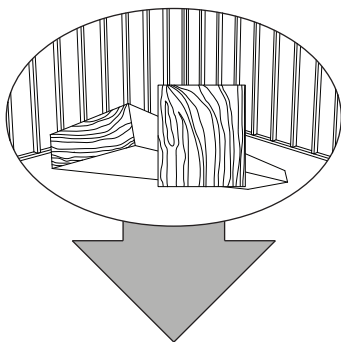
9

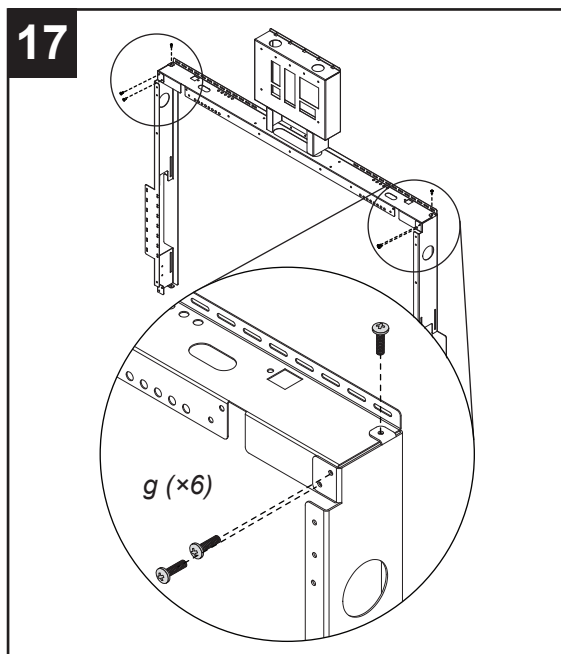
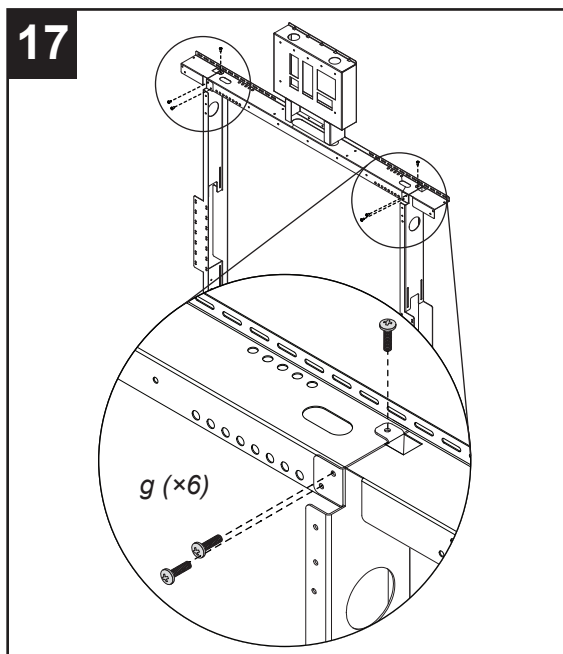
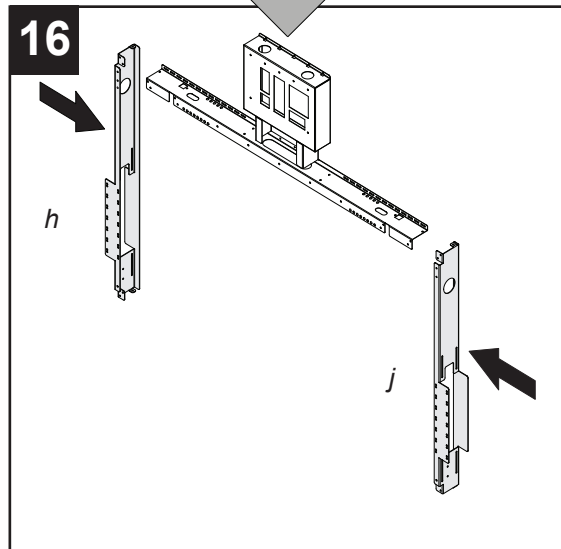
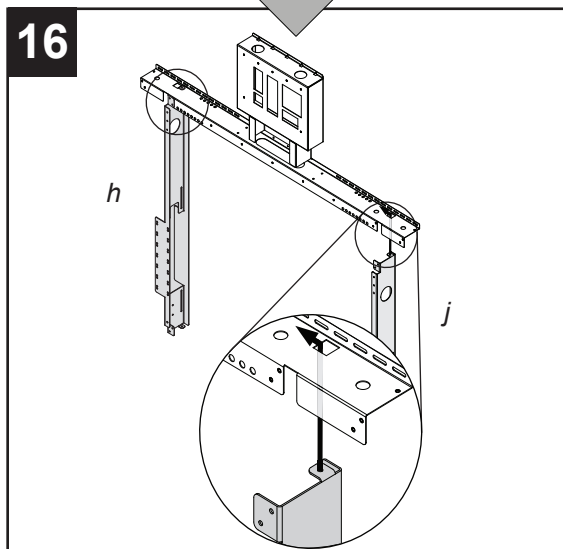


10





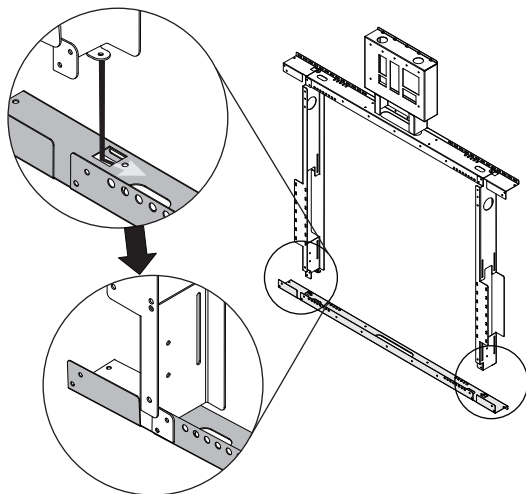




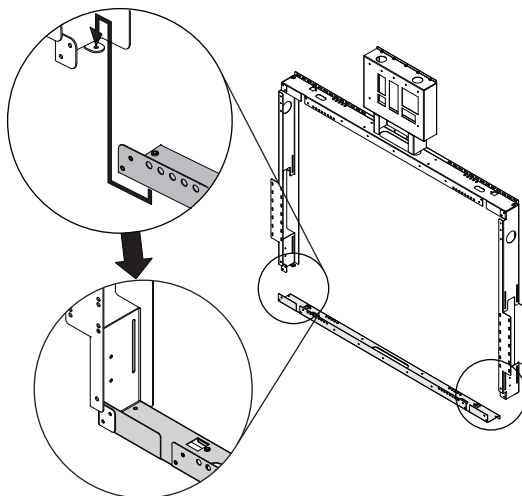
SB680

SB685

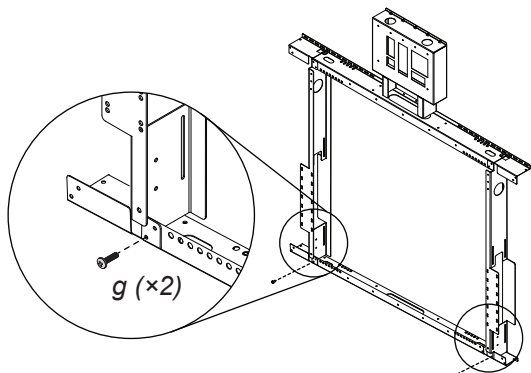
18



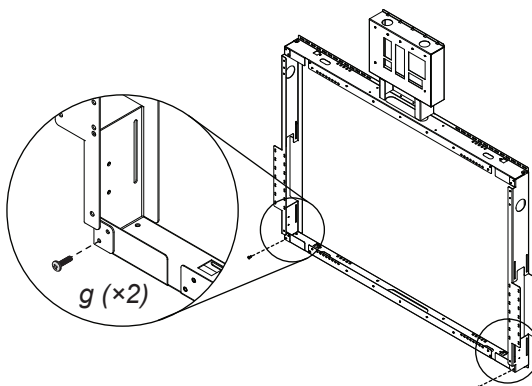
18



19



19

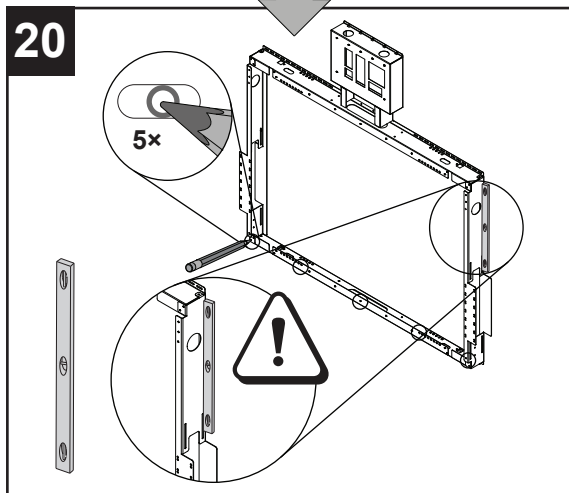
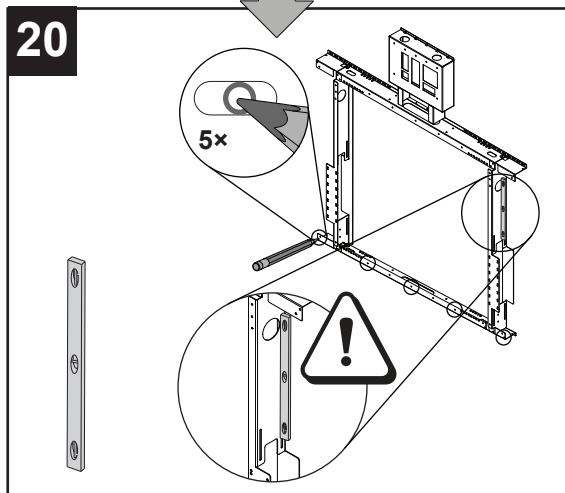


SB680

SB685

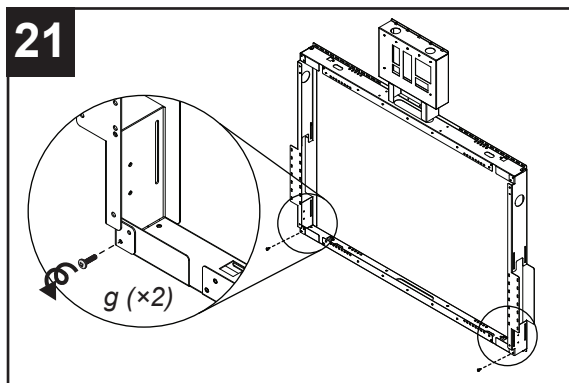
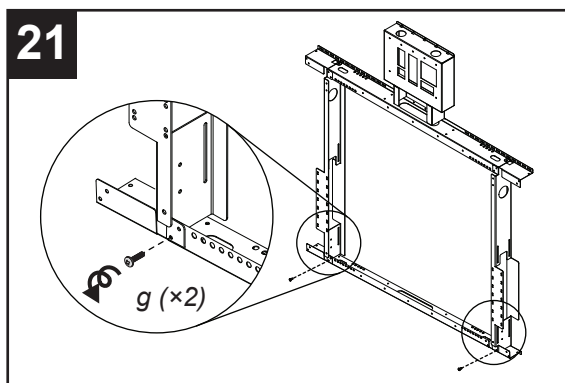
20

20



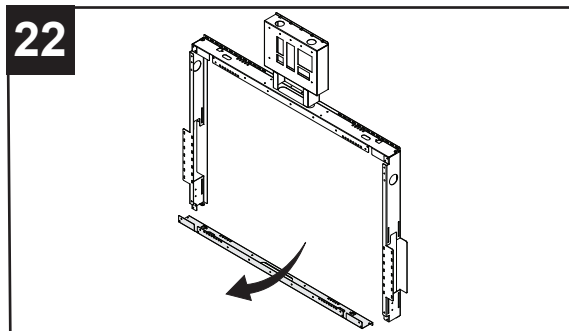
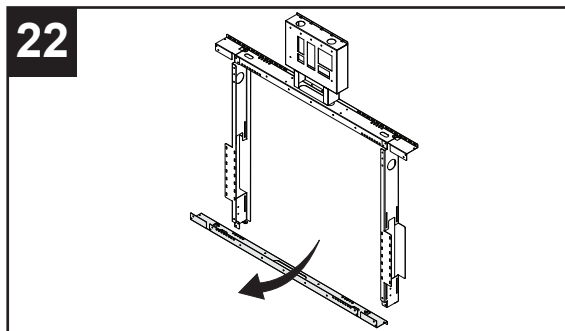
21

21

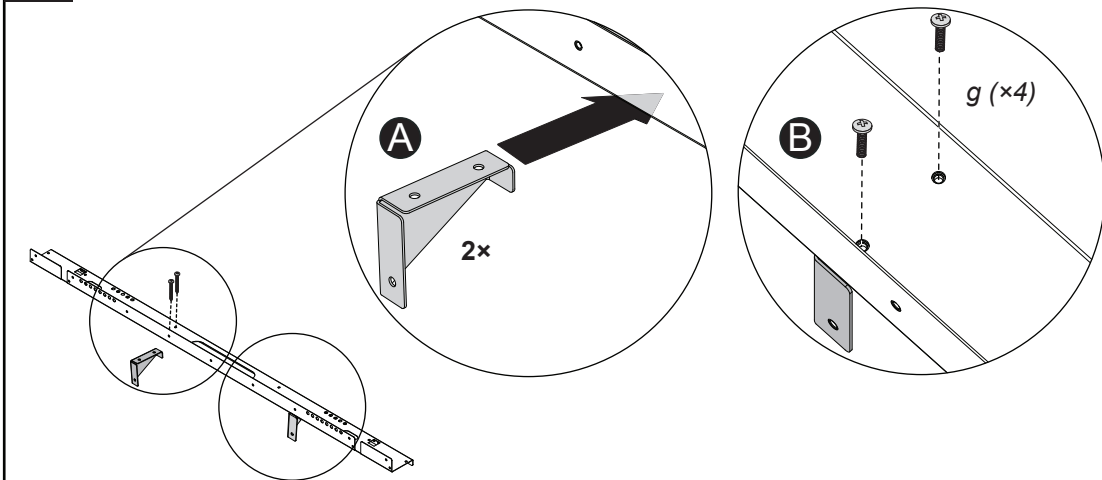


22

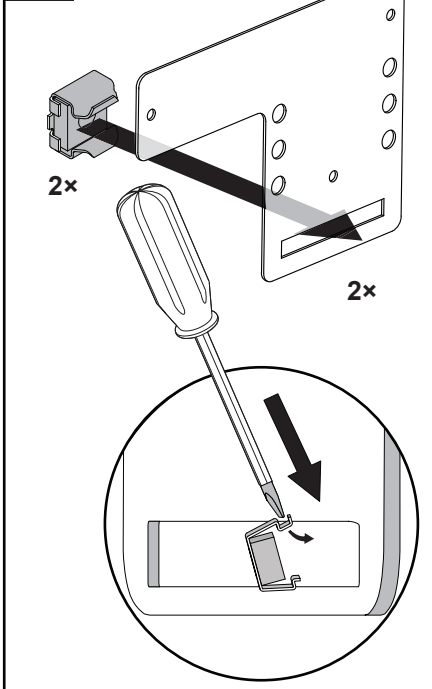
22



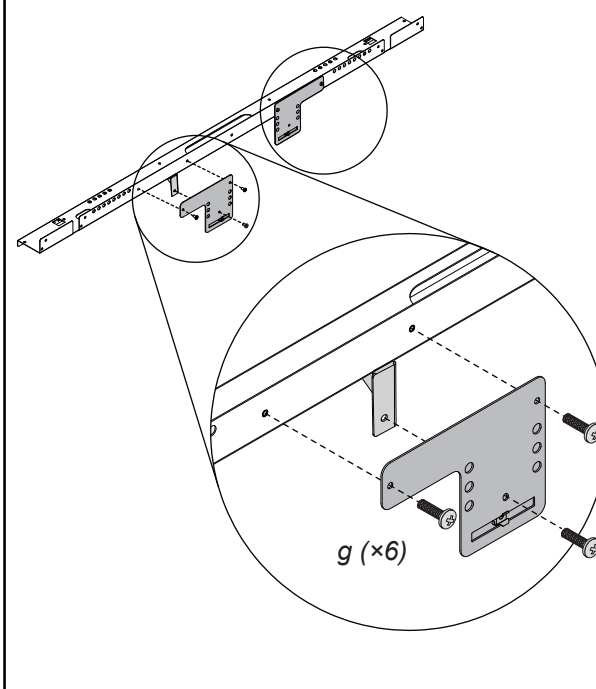
23

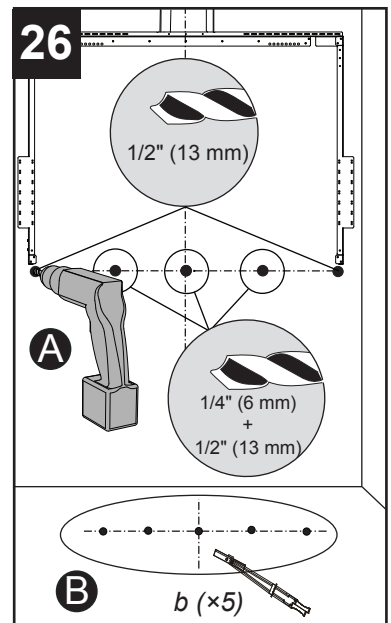
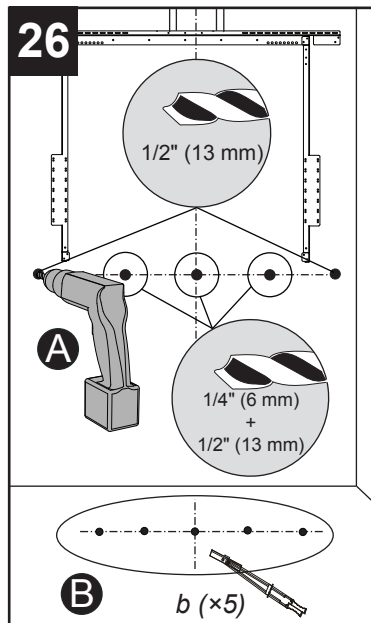
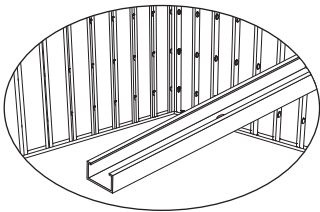
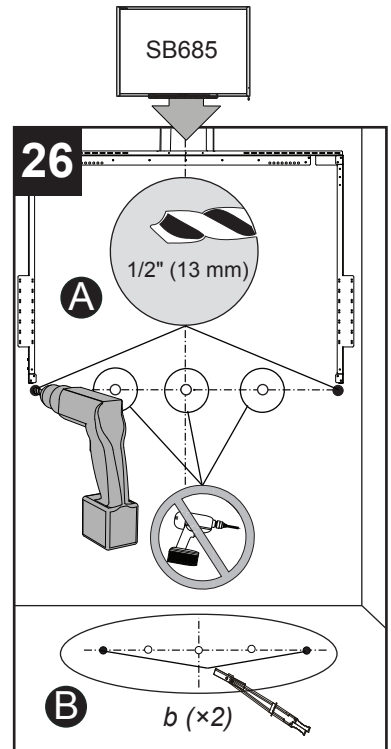
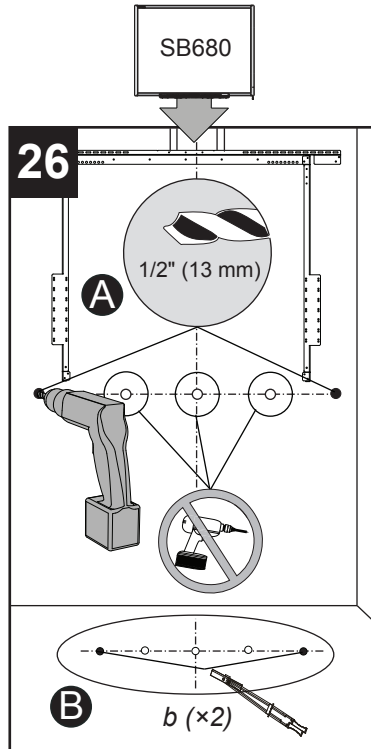
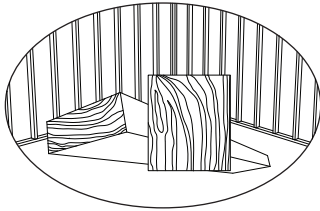


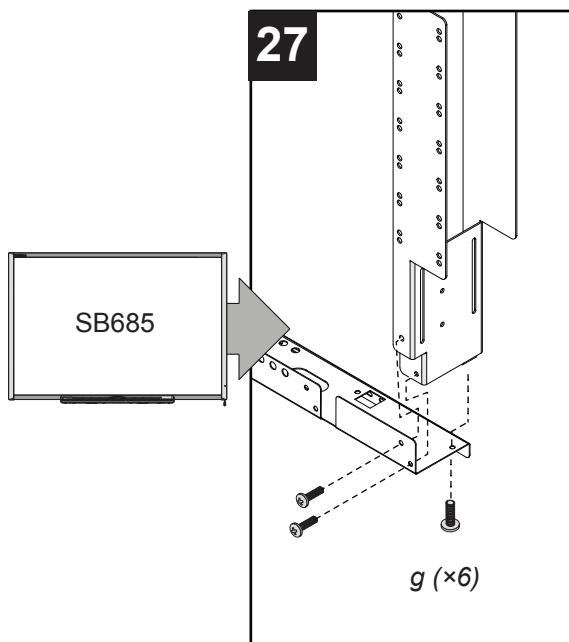
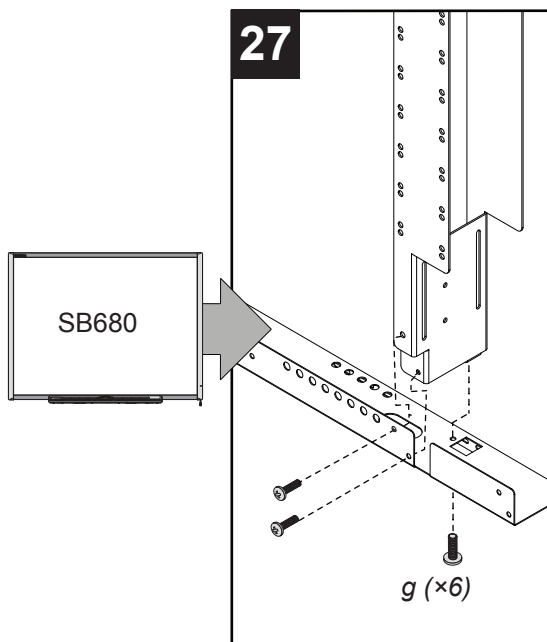
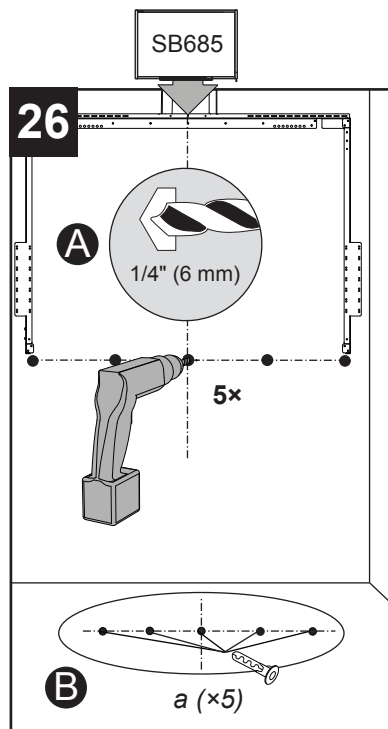
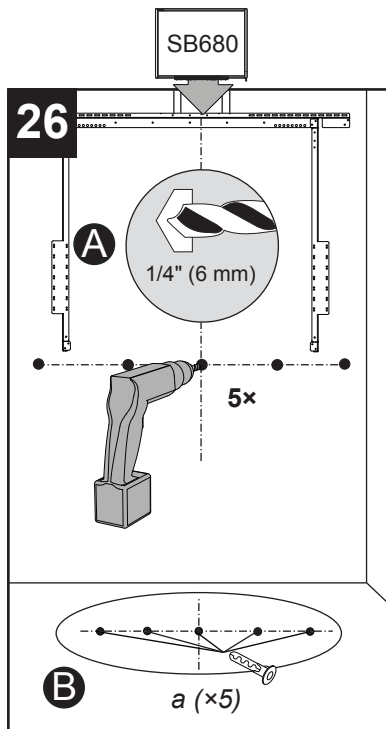
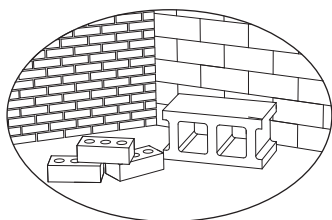
24

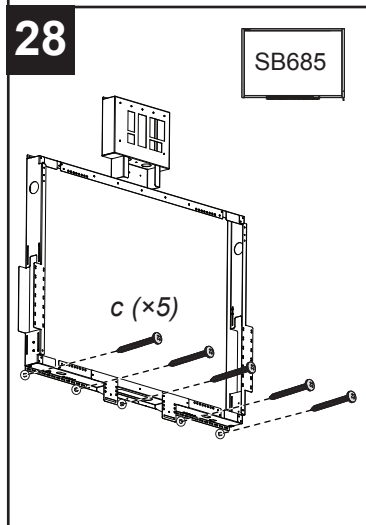
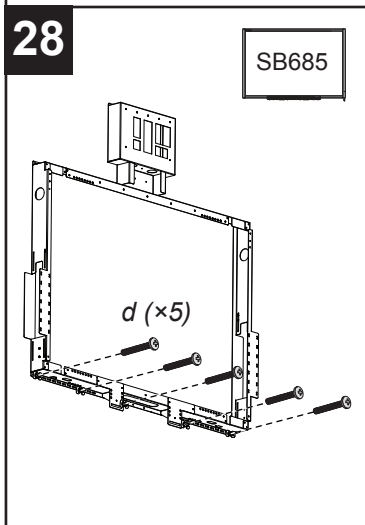
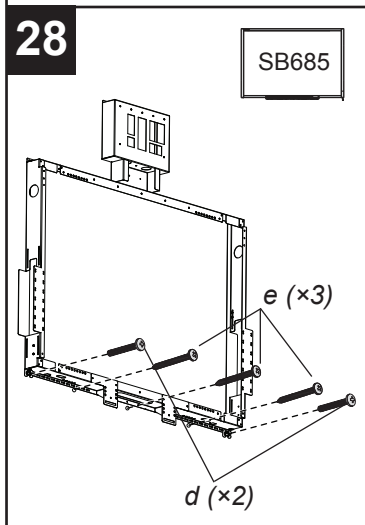
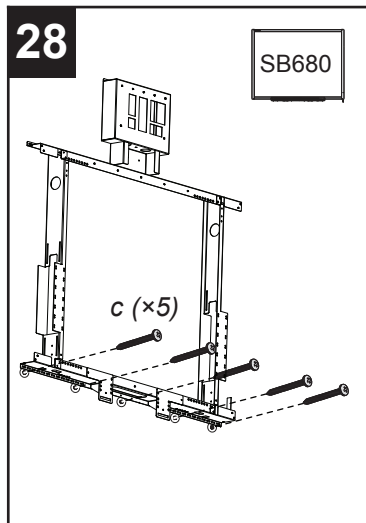
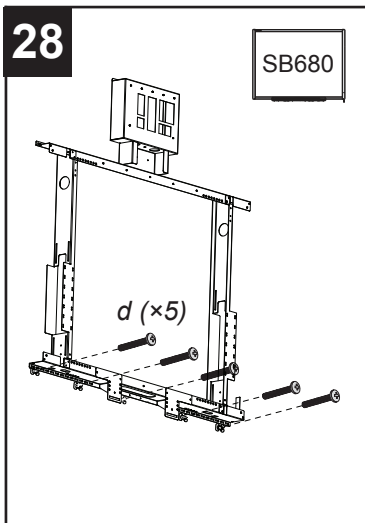
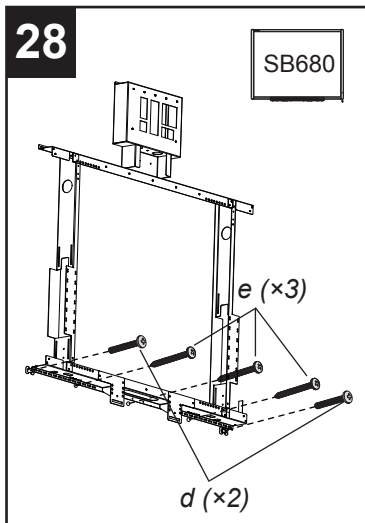
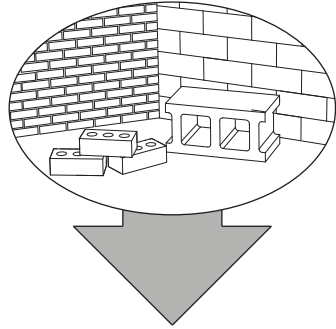
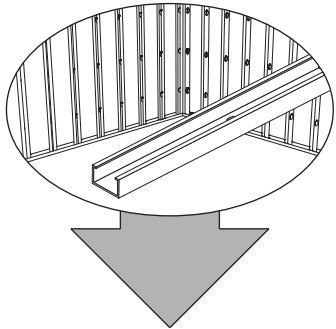
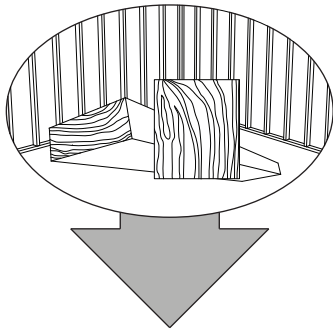


25



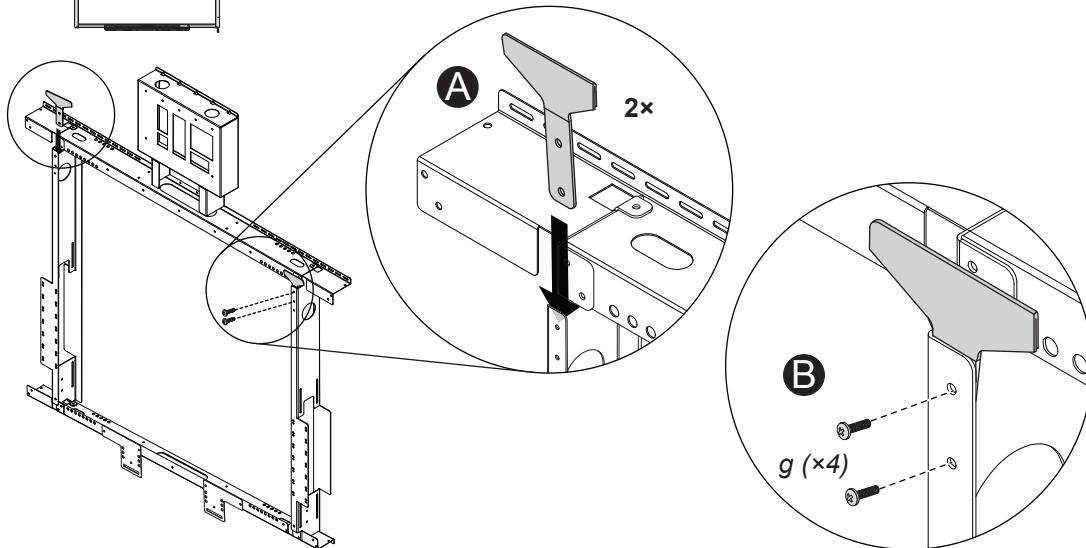






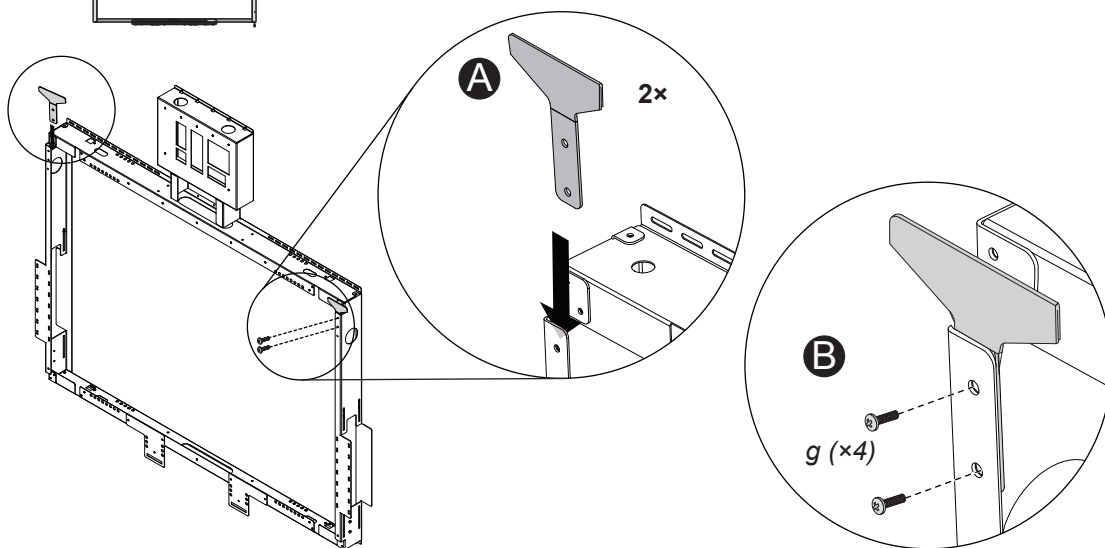
29

SB680



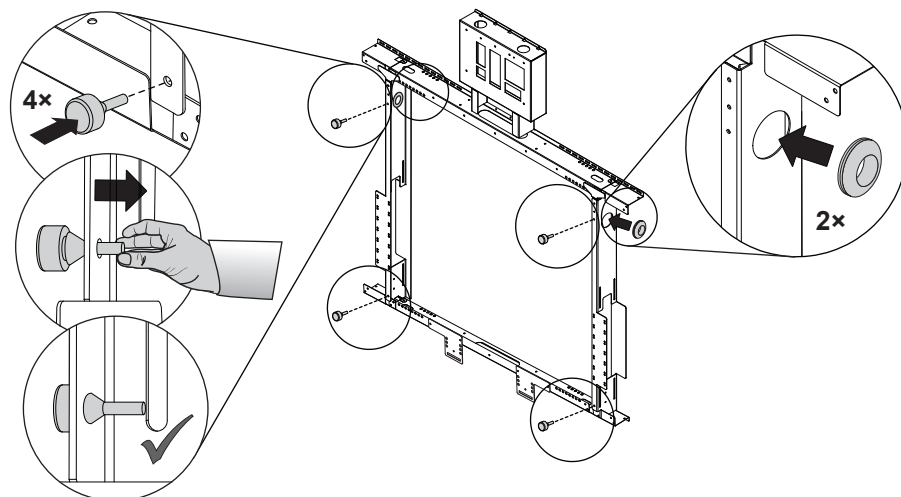
29

SB685



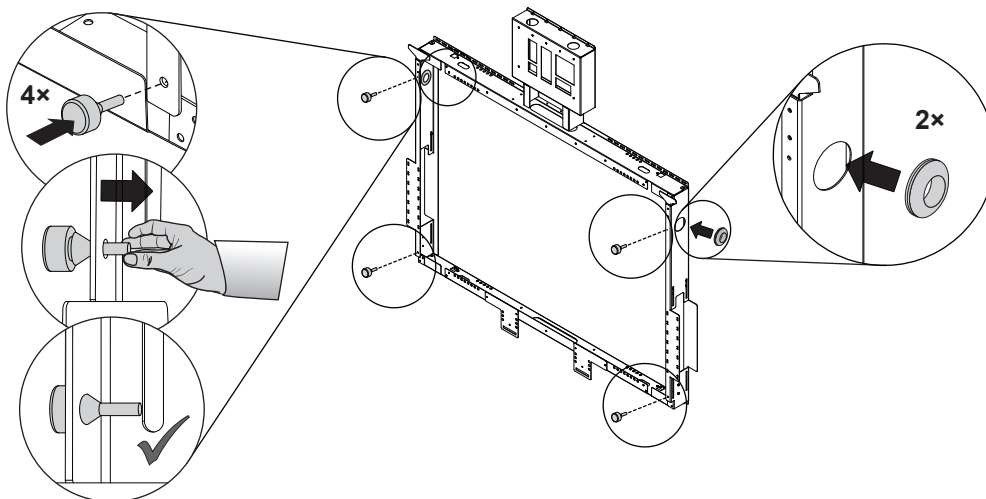
30

SB680



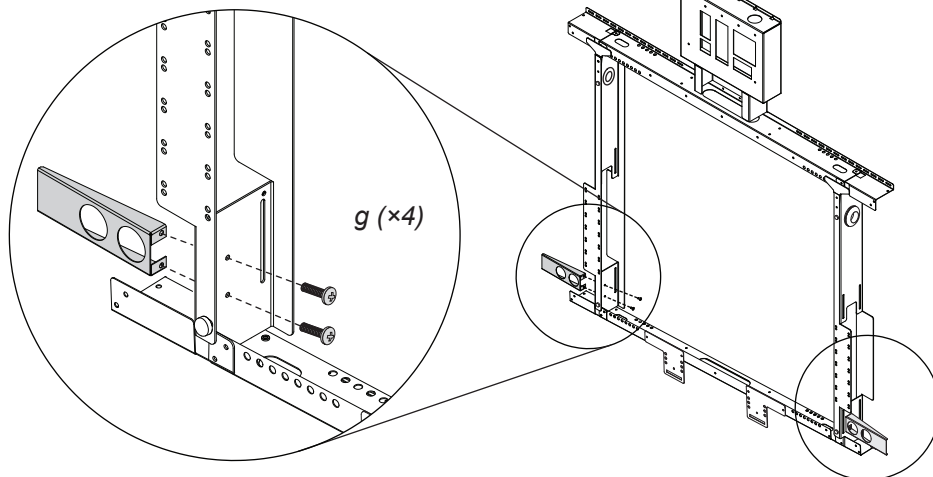
30

SB685



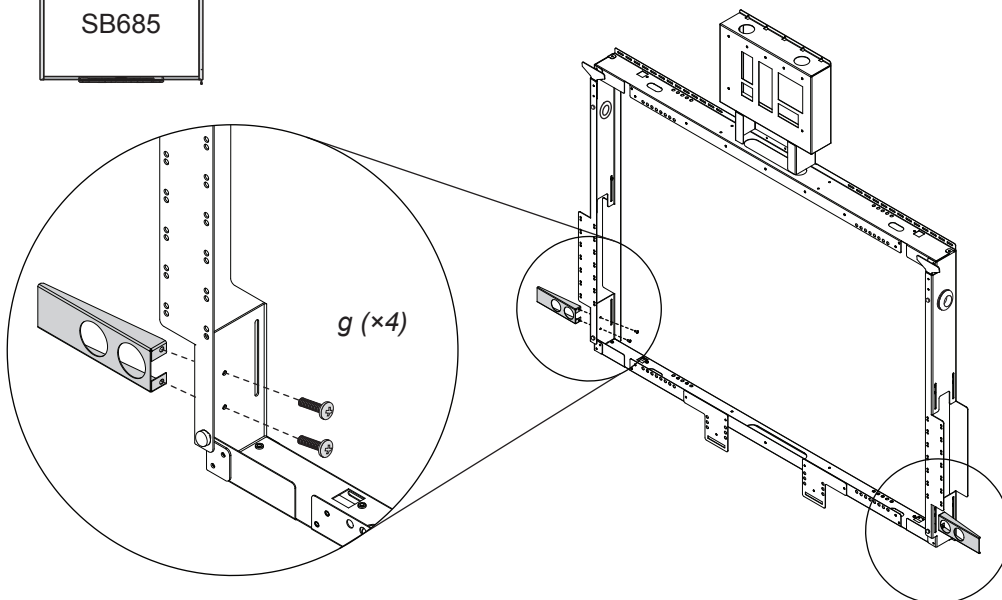
31

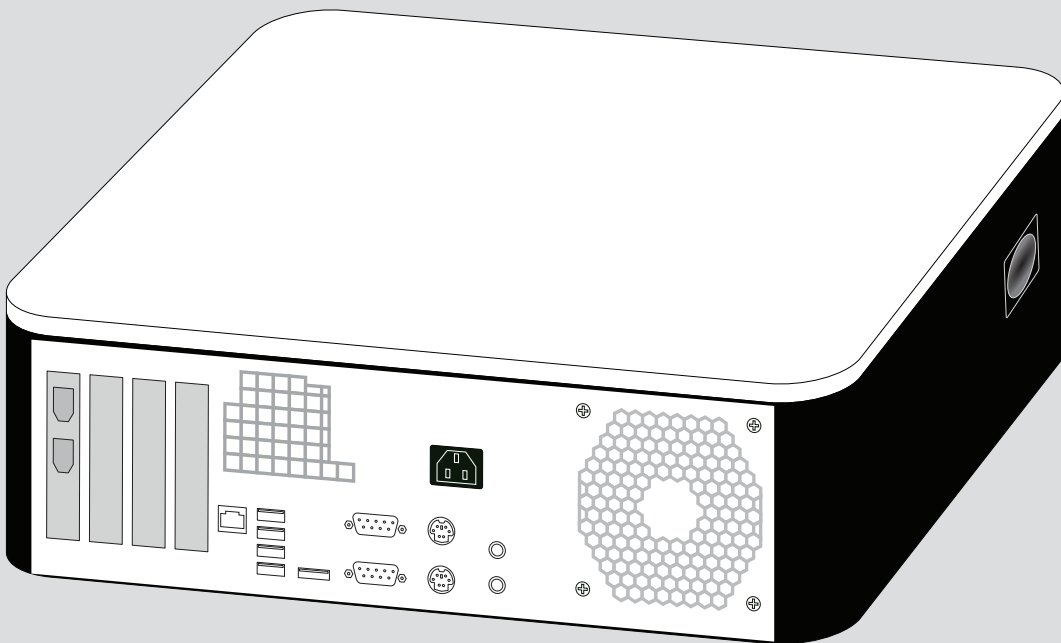
SB680

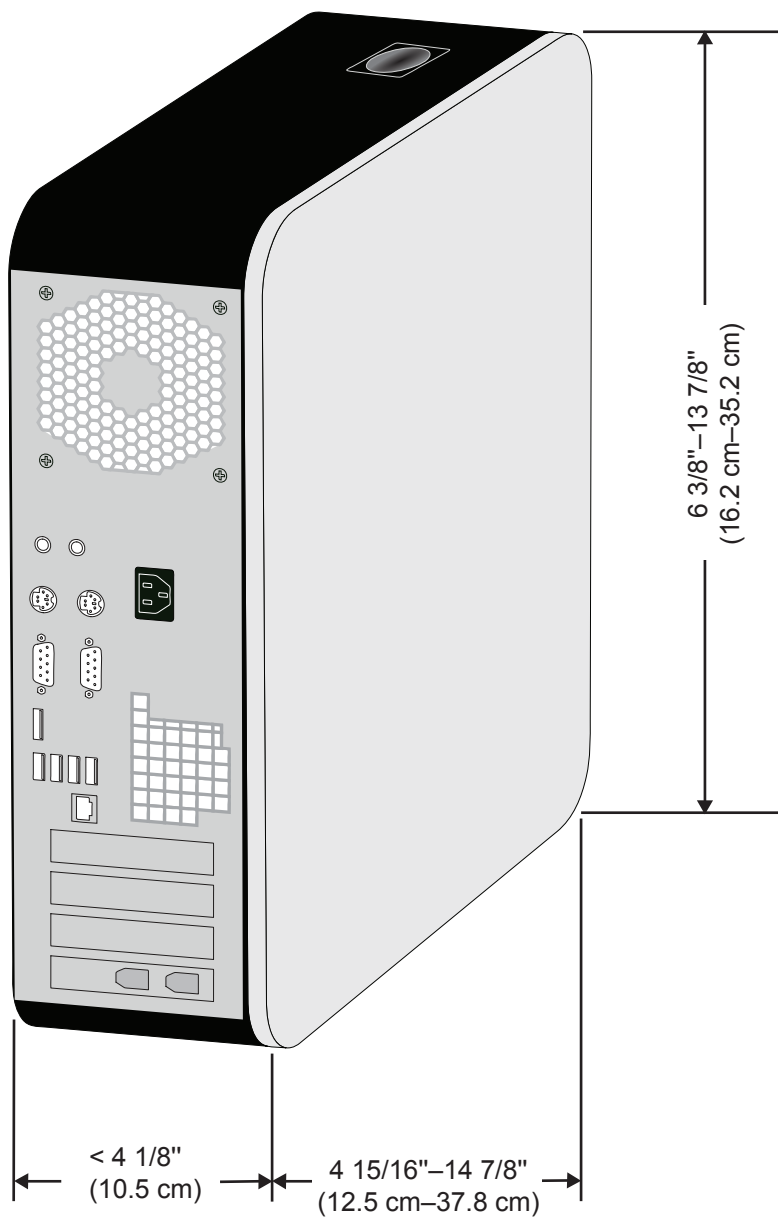


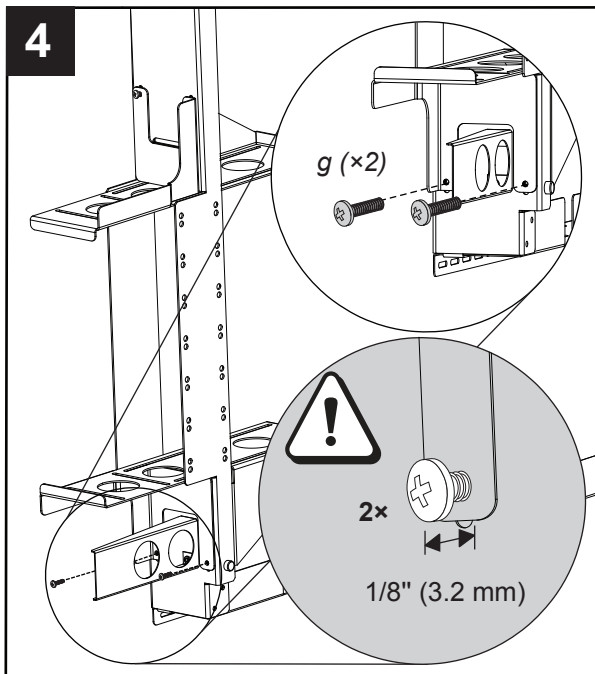
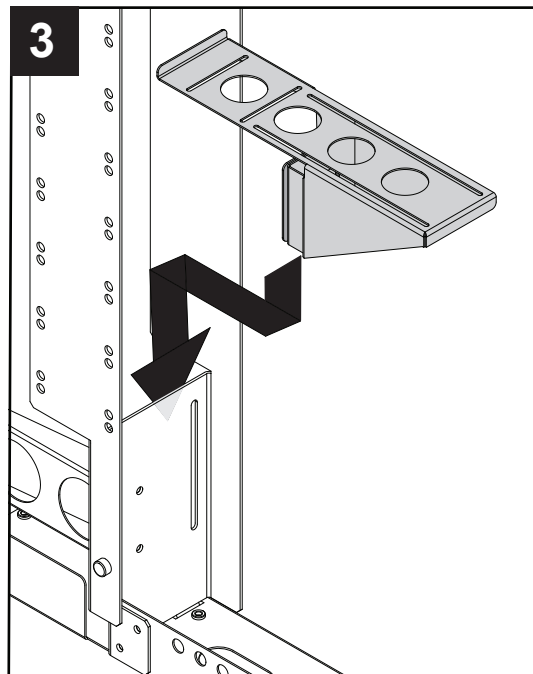
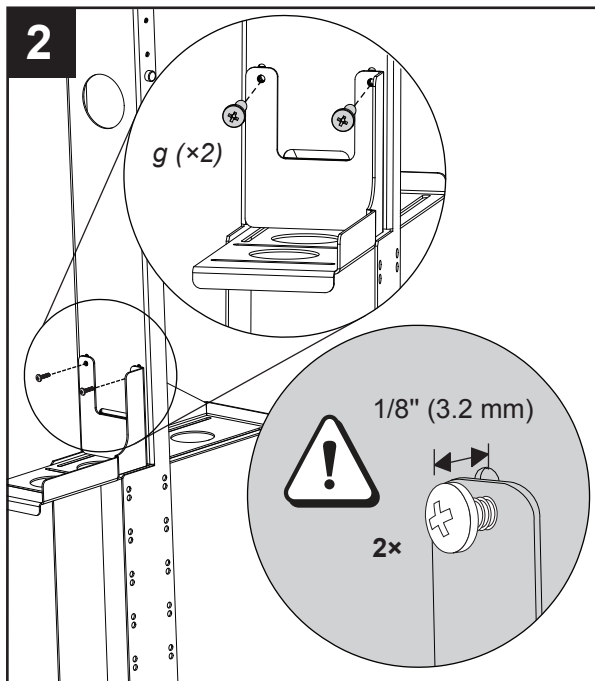
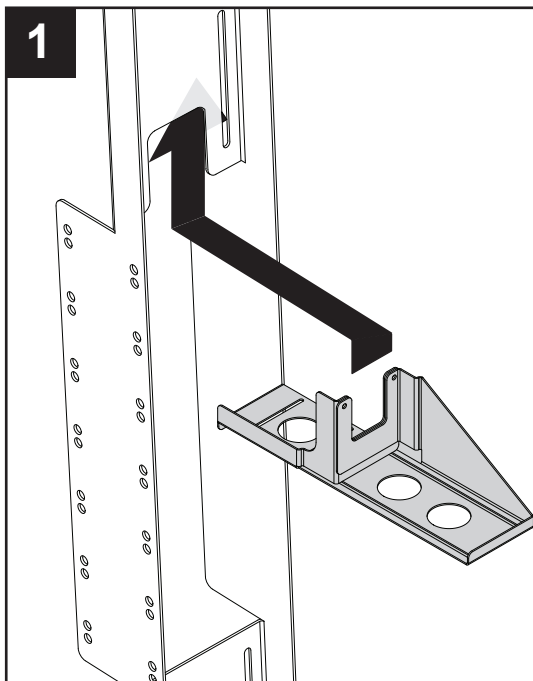
31

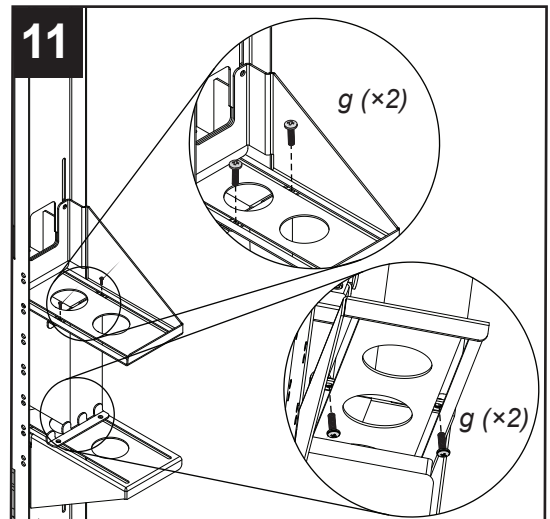
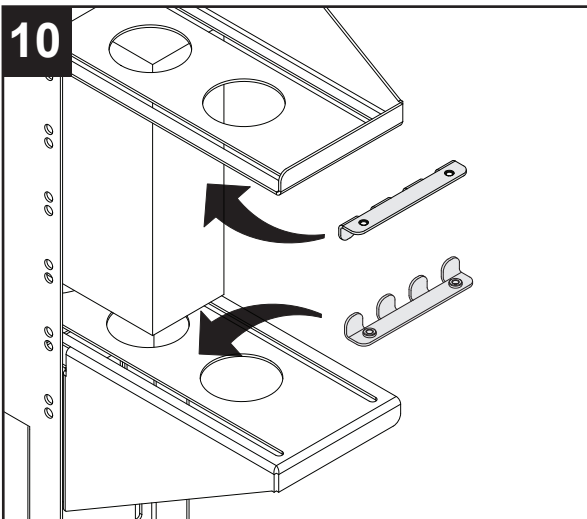
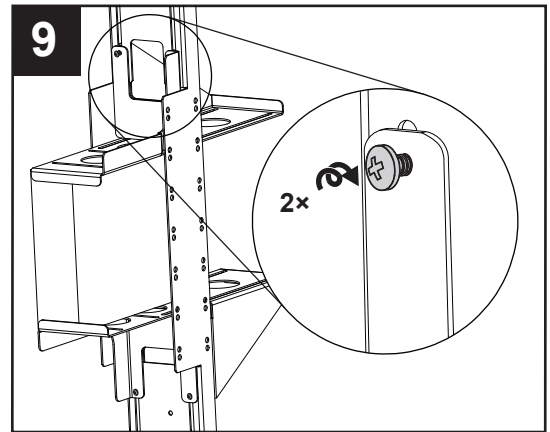
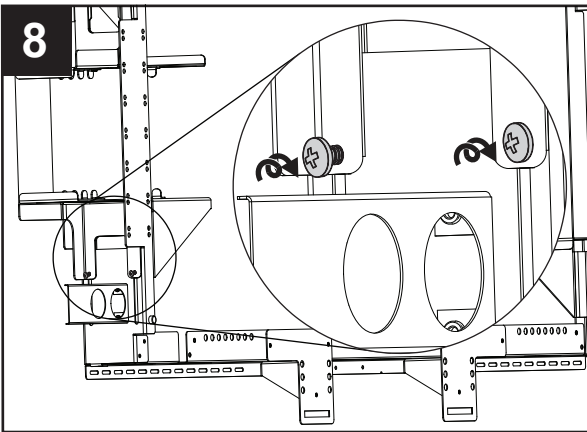
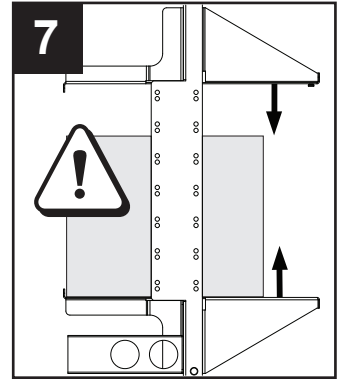
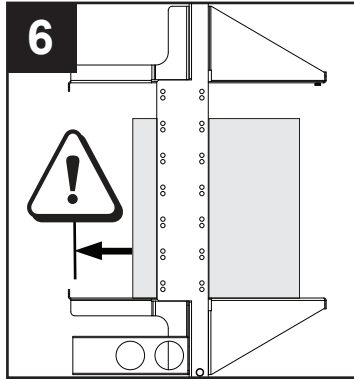
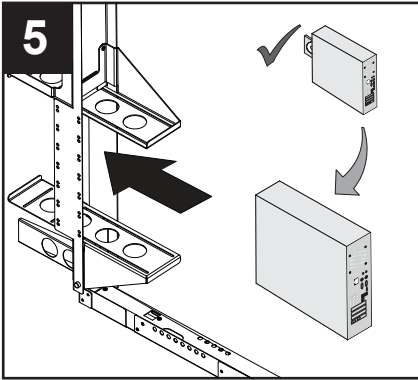
SB685





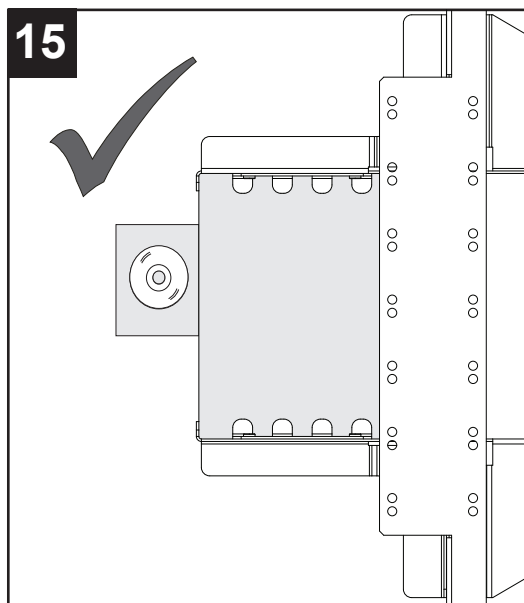
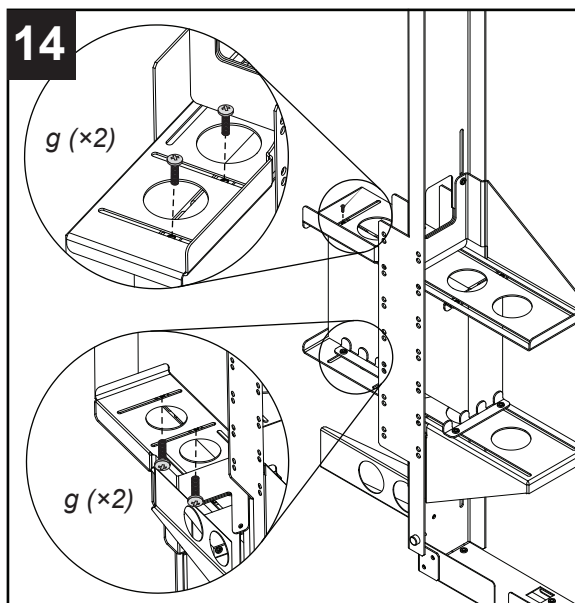
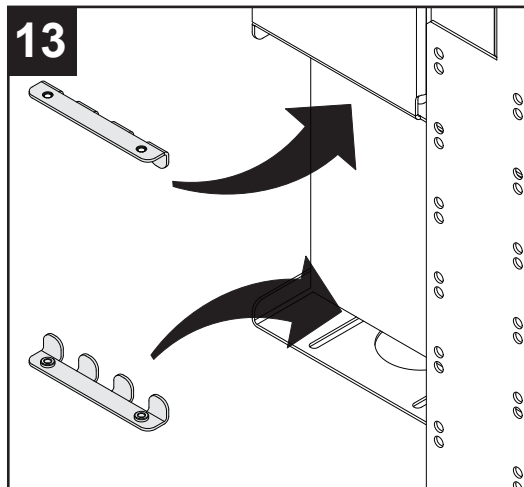
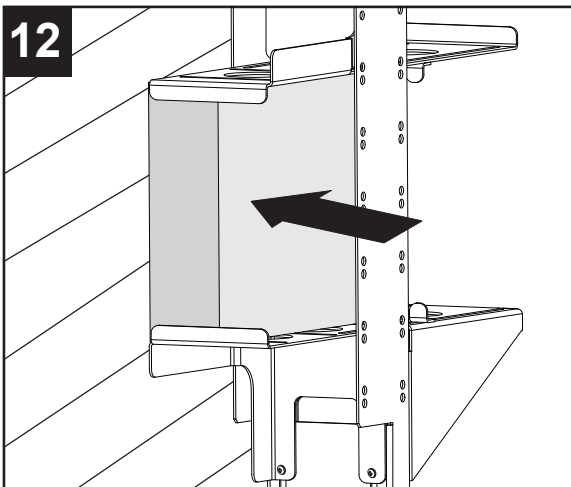


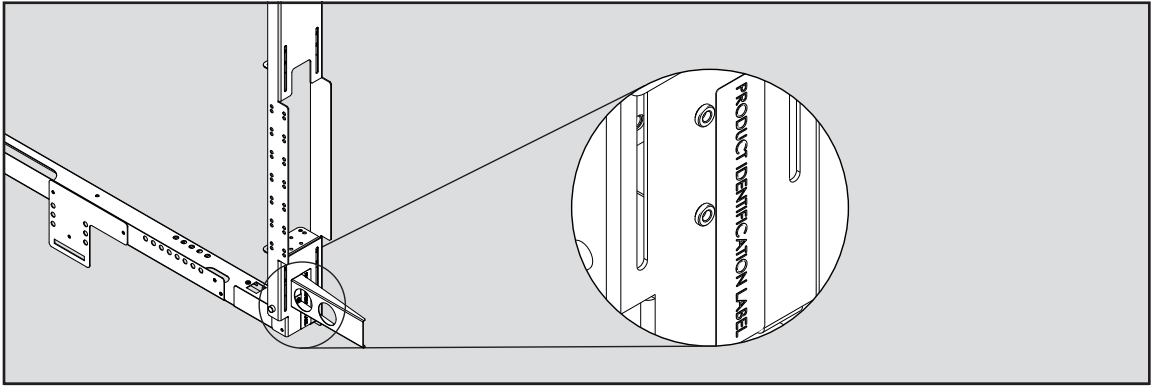






If you have a small computer, secure it against the wall using the side jaw brackets, as illustrated in steps 12 to 15.





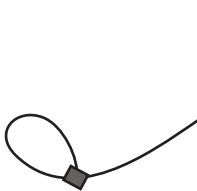
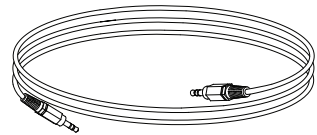
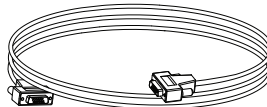
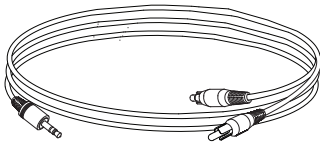
16



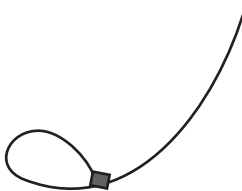
Please refer to the following website to complete the rest of your installation:
<http://www2.smarttech.com/st/en-US/Support/FrontProjection/600-IWS.htm>



You need the following parts to complete the next stage of the installation. These parts are included in the box.



×10



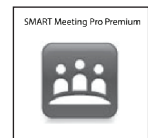
×2



f (×7)



×2



Hardware Environmental Compliance

SMART Technologies supports global efforts to ensure that electronic equipment is manufactured, sold and disposed of in a safe and environmentally friendly manner.

Waste Electrical and Electronic Equipment Regulations (WEEE Directive)



Waste Electrical and Electronic Equipment regulations apply to all electrical and electronic equipment sold within the European Union. When you dispose of any electrical or electronic equipment, including SMART Technologies products, we strongly encourage you to properly recycle the electronic product when it has reached the end of its life. If you require further information, please contact your reseller or SMART Technologies for information on which recycling agency to contact.

Restriction of Certain Hazardous Substances (RoHS Directive)

This product meets the requirements of the European Union's Restriction of Certain Hazardous Substances (RoHS) Directive 2002/95/EC. Consequently, this product also complies with other regulations that have arisen in various geographical areas, and that reference the European Union's RoHS directive.

Packaging

Many countries have regulations restricting the use of certain heavy metals in product packaging. The packaging used by SMART Technologies to ship products complies with packaging laws.

China's Electronic Information Products Regulations

China regulates products that are classified as EIP (Electronic Information Products). SMART Technologies products fall under this classification and meet the requirements for China's EIP regulations.



www.smarttech.com/support www.smarttech.com/contactsupport
Support +1.403.228.5940 or Toll Free 1.866.518.6791 (U.S./Canada)

SMARTTM

©2010 SMART Technologies ULC. All rights reserved. The SMART logo, SMART Board and smarttech are trademarks or registered trademarks of SMART Technologies ULC in the U.S. and/or other countries. All third-party product and company names may be trademarks of their respective owners. Contents are subject to change without notice.
03/2010.

99-01035-20 B0