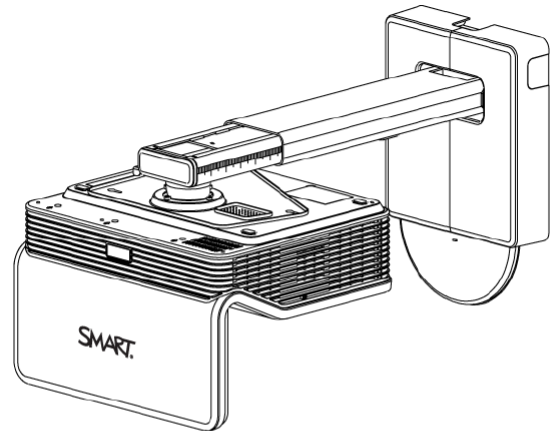


SMART[®]



Service Parts Diagrams

**For Model:
SLR60wi
SLR-XCP**

Service Parts Diagrams Revision History

Revision 1 - April, 2013

- New document

Revision 2 - June, 2013

- Add 1020901, 1017070 and 1017071

Revision 3 - November, 2013

- Change 20-01623-20 to 1013576
- Remove 93-00670-20
- Add 1018971, 1018970, 1018969, 1018967, 1018968 and 1018972

Revision 4 - September, 2014

- Change 1017893 to 1022425

Revision 5 - January, 2019

- Change description and quantity for 1019833

Standard Warranty Terms

The projector, interactive pen and XCP have a three-year limited equipment warranty. The projector lamp has a 1000-hour/one-year warranty.

First Customer Ship: April, 2013

SMART Technologies

3636 Research Road NW

Calgary, AB T2L 1Y1

CANADA

Support +1.403.228.5940 or Toll Free 1.866.518.6791 (Canada/U.S.)

Support Fax +1.403.806.1256

www.smarttech.com/contactserviceparts www.smarttech.com



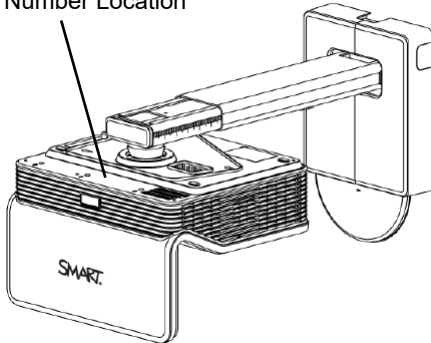
Service Parts Diagrams for the SLR60wi

Identifying Your Product Using the Serial Number	1
Ordering Parts	1
SLR60wi Parts	2
Optional Extended Control Panel (XCP)	4
Optional Projector Mounting Hardware Kit Assembly (Part No. 1013576)	5

Identifying Your Product Using the Serial Number

To make sure that you have the correct service parts diagrams, you must verify the serial number of your SLR60wi Projector. The serial number is located on the top of the projector. The serial number of the XCP is located on the right side of the connection panel. An example of the serial number format is shown below.

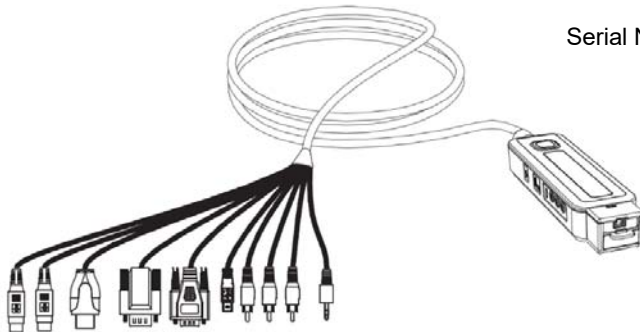
Serial Number Location



Q011EW50B0186

Unique Serial Number

Serial Number Location



A052FW23C0037

Unique Serial Number

Ordering Parts

Customers

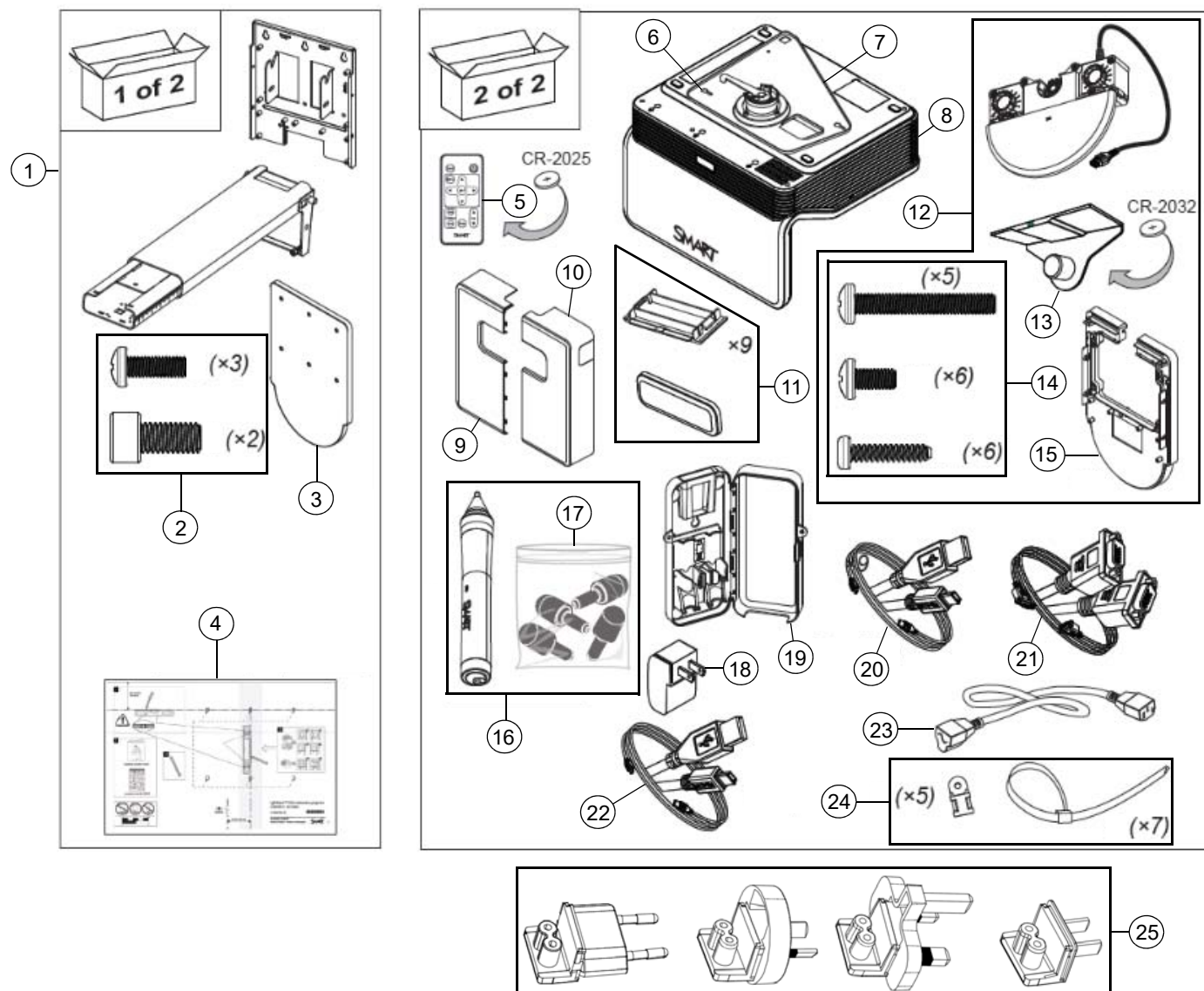
To order any of the parts in these service parts diagrams, contact your local reseller.
To find a reseller near you, visit www.smarttech.com/where.

Dealers and Distributors

For specific technical and pricing enquiries in regards to these diagrams please contact our service parts department.
Pricing is also available on-line via the SOURCE website (source.smarttech.com).

Web Form: www.smarttech.com/contactserviceparts
Phone: 1.888.42.SMART
International: +1.403.245.0333

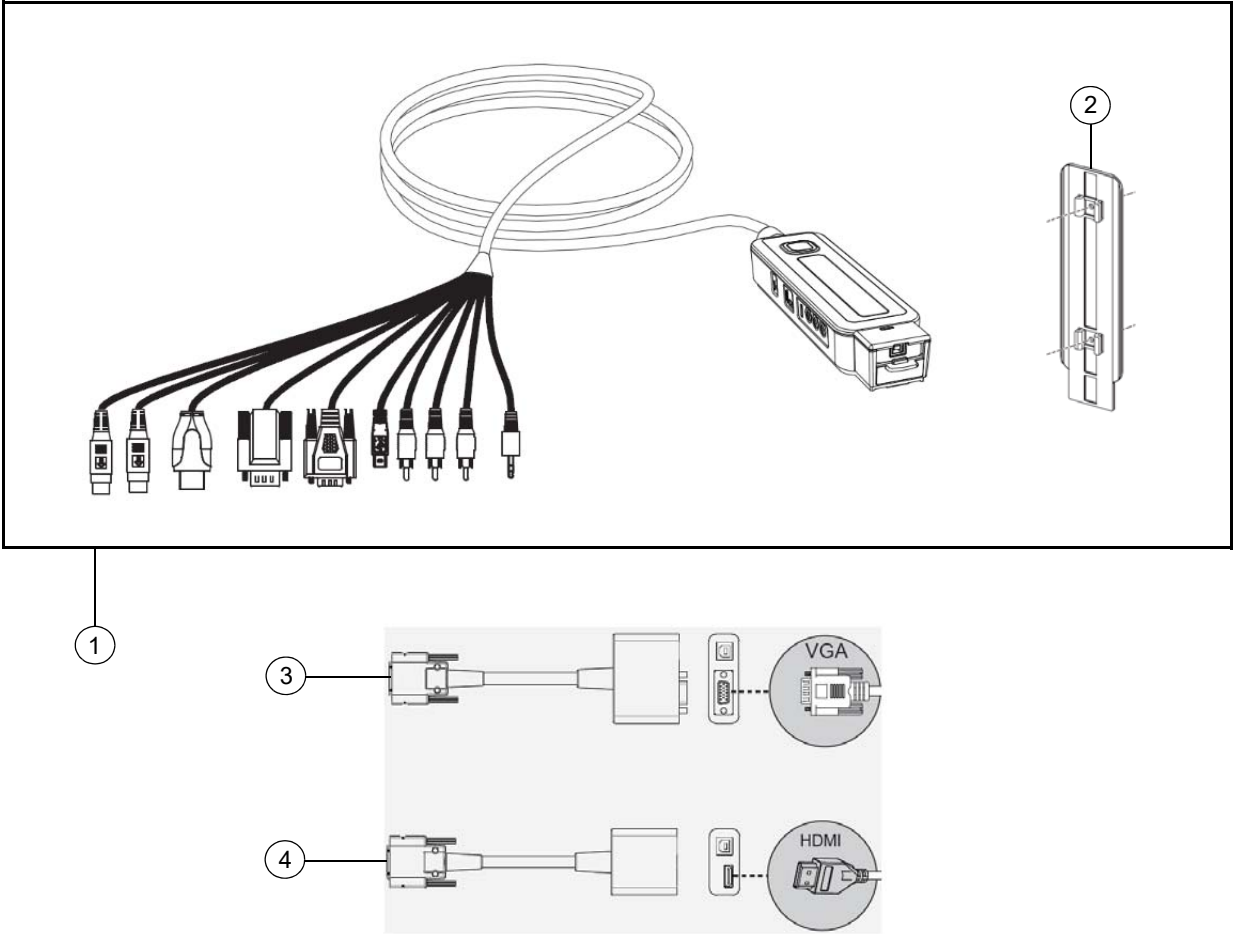
SLR60wi Parts



Item	Part No.	Qty	Description
1	1022425	1	Kit, projector boom, LightRaise NOTE: Includes boom arm, wall plate and items 2, 3, 4.
2	1018873	1	Assembly, hardware kit, boom
3	1019831	1	Assembly, shim, wall bracket, half-curtain travel
4	1018490	1	Template, mounting, LightRaise 60wi
5	03-00131-20	1	Remote control NOTE: CR-2025 battery is not included with replacement remotes.
6	1018751	3	Screw, M4 x 8 mm, Phillips, pan head NOTE: For attaching item 7 to the projector.
7	1017033	1	Assembly, projector plate, ball joint, boom NOTE: Comes attached to the projector.
8	FRU-SLR60WI-PJR	1	FRU, LightRaise 60wi Projector Only NOTE: Includes projector and item 6. Does not include item 7.

9	1019865	1	Assembly, wall cover, left, projector boom
10	1019866	1	Assembly, wall cover, right, projector boom
11	1020453	1	Assembly, boom plastic, SLR60wi
12	1018949	1	Kit, light curtain, LightRaise 60wi NOTE: Includes light curtain and items 13, 14, 15.
13	1019410	1	Assembly, curtain alignment tool NOTE: CR-2032 battery is included.
14	1019726	1	Assembly, hardware kit, light curtain
15	1019833	2	Assembly, wall spacer, projector boom, SLR60wi
16	RPEN-SLR60	2	Replacement Pen for LightRaise 60wi NOTE: Includes pen and item 17.
17	FRU-NIB-SLR60WI	1	Replacement Nibs for LightRaise 60wi - Set of Four
18	1019272	1	Power adapter, A/C, NEMA 1-15, USB A NOTE: Includes plug adapter for North America.
19	1017709	1	Assembly, pen holder, LightRaise 60wi
20	1018744	1	Cable, USB A to USB Mini-B, 16' (5.0 m)
21	1017287	1	Cable, video, HD15 male to HD15 male, 16' (5.0 m)
22	1017281	1	Cable, USB A to USB Mini-B, 9' 10" (3.0 m)
23	93-00630-20	1	Cable, power, North America, 14' 9" (4.5 m)
23	93-00632-20	1	Cable, power, United Kingdom, 14' 9" (4.5 m)
23	93-00631-20	1	Cable, power, Europe, 14' 9" (4.5 m)
23	93-00629-20	1	Cable, power, Australia, 14' 9" (4.5 m)
23	93-00634-20	1	Cable, power, Japan, 14' 9" (4.5 m)
23	93-00633-20	1	Cable, power, China, 14' 9" (4.5 m)
23	1018971	1	Cable, power, Saudi Arabia, 14' 9" (4.5 m)
23	1018970	1	Cable, power, India, 14' 9" (4.5 m)
23	1018969	1	Cable, power, Singapore, 14' 9" (4.5 m)
23	1018967	1	Cable, power, Italy, 14' 9" (4.5 m)
23	1018968	1	Cable, power, Switzerland, 14' 9" (4.5 m)
23	1018972	1	Cable, power, Brazil, 14' 9" (4.5 m)
24	1019775	1	Assembly, tie wraps and mounts
25	1020901	1	Kit, international charger convertors, LightRaise 60wi NOTE: Includes international plug adapters (Europe, United Kingdom, Australia and China) to be used with 1019272. This item is only included with projectors destined for locations outside of North and South America.
Not shown	1019919	1	Door, lamp cover, LightRaise 60wi NOTE: Comes attached to the projector.
Not shown	1018580	1	Replacement Lamp for SLR60wi Projector

Optional Extended Control Panel (XCP)



Item	Part No.	Qty	Description
1	SLR-XCP	1	Kit, Control Panel, Extended (XCP) NOTE: Includes XCP and item 2.
2	1017342	1	Bracket, wall mount
3	1017071	1	Dongle, VGA, XCP NOTE: This item is optional and is not included with SLR-XCP.
4	1017070	1	Dongle, HDMI, XCP NOTE: This item is optional and is not included with SLR-XCP.

Optional Projector Mounting Hardware Kit Assembly (Part No. 1013576)

