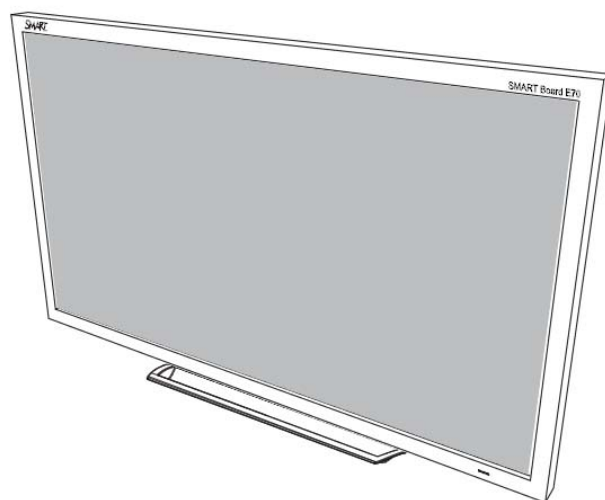


# SMART<sup>®</sup>



## ***Service Parts Diagrams***

**For Model:**

**SPNL-4065**

# Service Parts Diagrams Revision History

## Revision 1 - March, 2015

- New document

## Revision 2 - August, 2016

- Add 1022063, 1021917, 93-00837-20, 1026901, 93-00708-20, 93-00654-20, 93-063, 1018969, 1018970, 1018971, 1018972, 1025597 and 1025603
- Remove 93-051 and 1018853

## Standard Warranty Terms

Base product: Two-year limited equipment warranty

First Customer Ship: March, 2015

---

### SMART Technologies

3636 – Research Road NW  
Calgary, AB T2L 1Y1  
CANADA

Support +1.403.228.5940 or Toll Free 1.866.518.6791 (Canada/U.S.)

Support Fax +1.403.806.1256

[www.smarttech.com/contactserviceparts](http://www.smarttech.com/contactserviceparts) [www.smarttech.com](http://www.smarttech.com)



# Service Parts Diagrams for the SPNL-4065

---

Identifying Your Product Using the Serial Number ..... 1

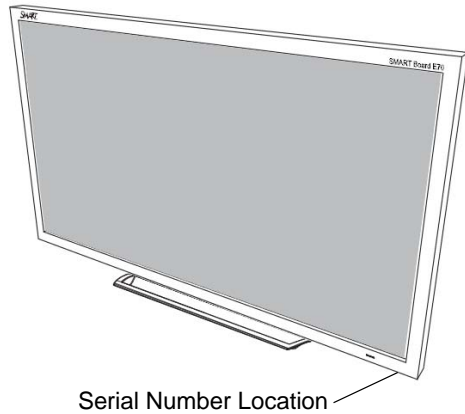
Ordering Parts ..... 1

SPNL-4065 Parts ..... 2



## Identifying Your Product Using the Serial Number

To make sure that you have the correct service parts diagrams, you must verify the serial number of your SPNL-4065. The serial number will be located on the right underside of the bottom bezel. An example of the serial number format is shown below.



Unique Serial Number

**M102HW02C3008**

## Ordering Parts

### Customers

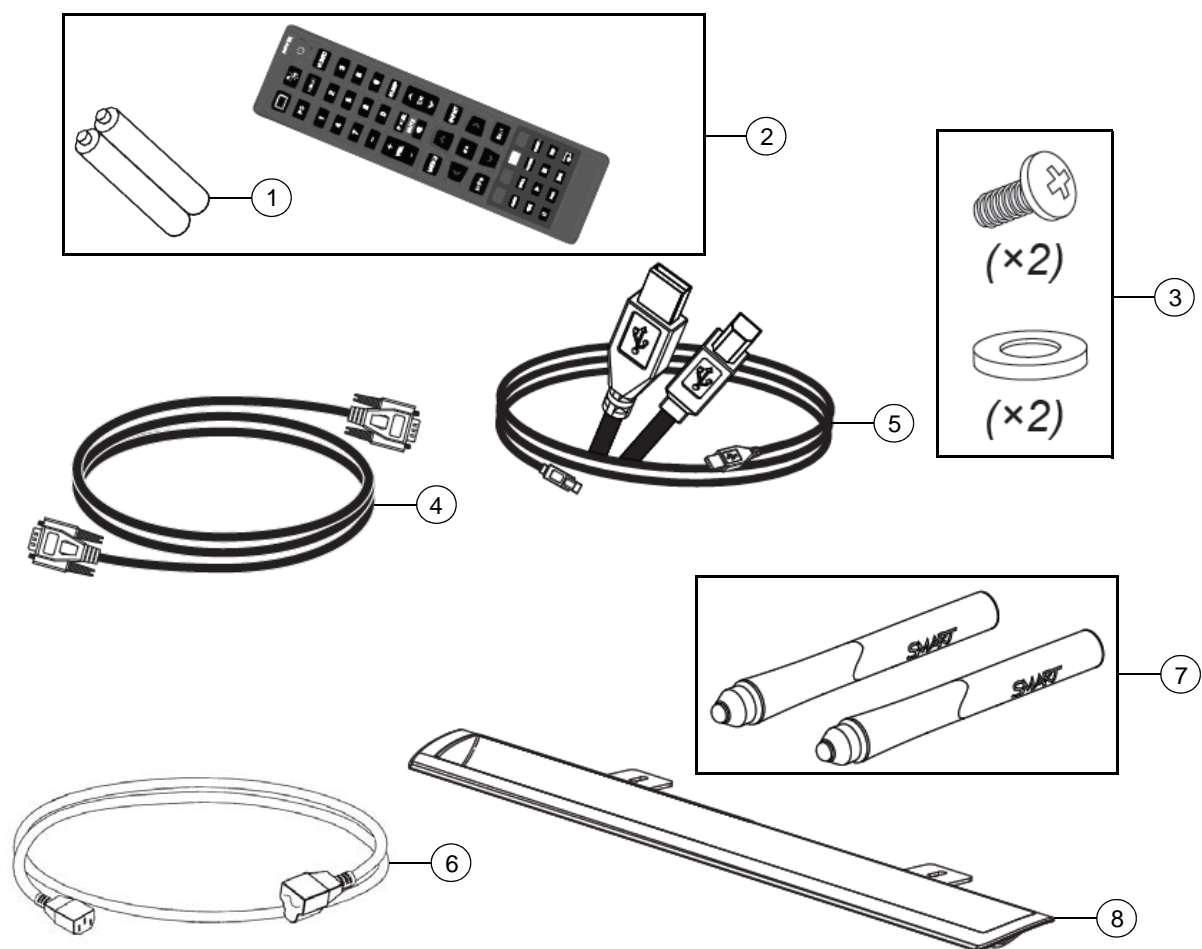
To order any of the parts in these service parts diagrams, contact your local reseller.  
To find a reseller near you, visit [www.smarttech.com/where](http://www.smarttech.com/where).

### Dealers and Distributors

For specific technical and pricing enquiries in regards to these diagrams please contact our service parts department.  
Pricing is also available on-line via the SOURCE website ([source.smarttech.com](http://source.smarttech.com)).

Web Form: [www.smarttech.com/contactserviceparts](http://www.smarttech.com/contactserviceparts)  
Phone: 1.888.42.SMART  
International: +1.403.245.0333

## SPNL-4065 Parts



Item	Part No.	Qty	Description
1	01-00257	2	Battery, AAA
2	1021284	1	Assembly, remote control, SPNL-4000 series <b>NOTE:</b> Includes remote and item 1.
3	1021689	1	Hardware kit, pen ledge
4	1021917	1	Cable, video, HD15 male to HD15 male 6' (1.8 m)
5	93-00828-20 or 93-00837-20	1 1	Cable, USB, A-B, 16' (5.0 m) Cable, USB, A-B, 10' (3.05 m)
6	1022063	1	Cable, power, North America, 8' (2.4 m)
6	93-055	1	Cable, power, United Kingdom, 8' (2.4 m)
6	93-056	1	Cable, power, Australia, 8' (2.4 m)
6	93-054	1	Cable, power, Europe, 8' (2.4 m)
6	93-00708-20	1	Cable, power, China, 8' (2.4 m)
6	93-00654-20	1	Cable, power, Japan, 8' (2.4 m)
6	93-063	1	Cable, power, South Africa, 8' (2.4 m)

6	1018969	1	Cable, power, Singapore, 14' 9" (4.5 m)
6	1018970	1	Cable, power, India, 14' 9" (4.5 m)
6	1018971	1	Cable, power, Saudi Arabia, 14' 9" (4.5 m)
6	1018972	1	Cable, power, Brazil, 14' 9" (4.5 m)
6	1025597	1	Cable, power, Argentina, 14' 9" (4.5 m)
6	1025603	1	Cable, power, Chile and Italy, 14' 9" (4.5 m)
7	RPEN-SBM6	1	Replacement Pens for SMART Board SBM600 and SPNL-4000 Series - Set of Two
8	1021011	1	Pen tray
Not shown	1026901	1	Kit, packaging, SPNL-4065