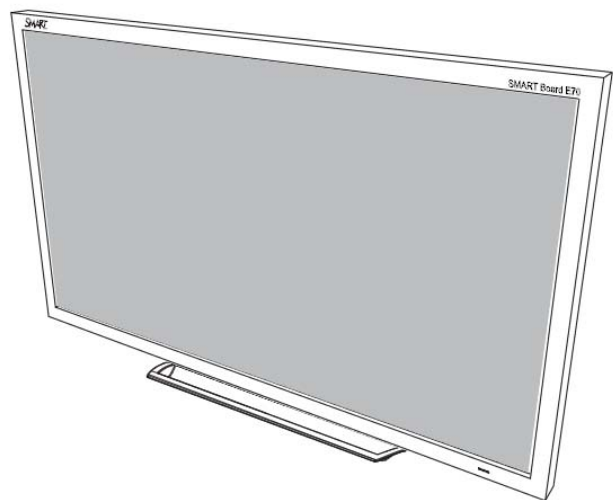


SMART[®]



Service Parts Diagrams

**For Model:
SPNL-4084**

Service Parts Diagrams Revision History

Revision 1 - March, 2016

- New document

Revision 2 - August, 2016

- Add 1021917, 1027427, 93-00708-20, 93-00654-20, 93-063, 1018969, 1018970, 1018971, 1018972, 1025597 and 1025603
- Remove 1018853

Standard Warranty Terms

Base product: Two-year limited equipment warranty

First Customer Ship: February, 2016

SMART Technologies

3636 – Research Road NW
Calgary, AB T2L 1Y1
CANADA

Support +1.403.228.5940 or Toll Free 1.866.518.6791 (Canada/U.S.)

Support Fax +1.403.806.1256

www.smarttech.com/contactserviceparts www.smarttech.com



Service Parts Diagrams for the SPNL-4084

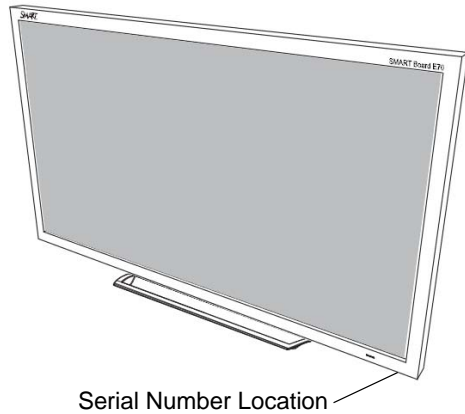
Identifying Your Product Using the Serial Number 1

Ordering Parts 1

SPNL-4084 Parts 2

Identifying Your Product Using the Serial Number

To make sure that you have the correct service parts diagrams, you must verify the serial number of your SPNL-4084. The serial number will be located on the right underside of the bottom bezel. An example of the serial number format is shown below.



Unique Serial Number

M102IW02E3036

Ordering Parts

Customers

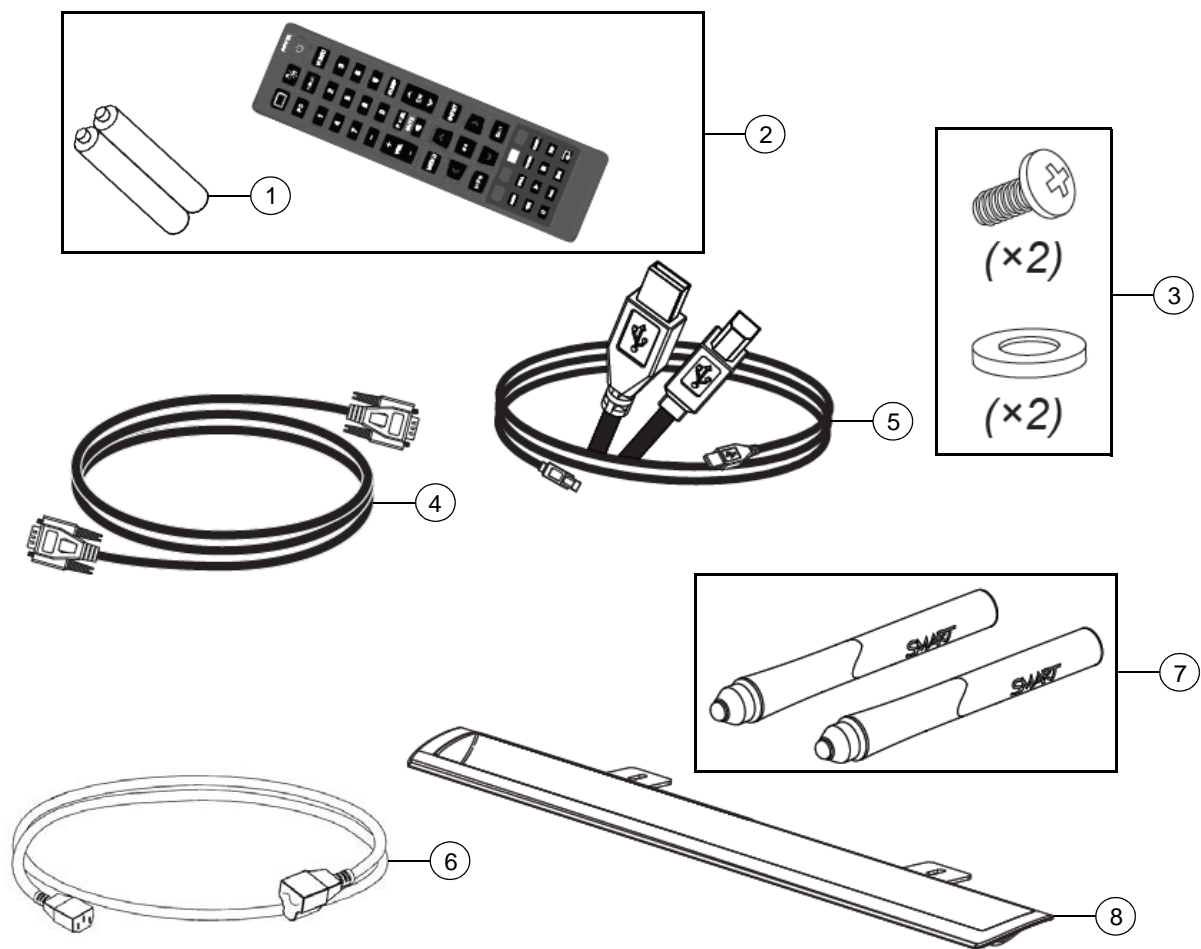
To order any of the parts in these service parts diagrams, contact your local reseller.
To find a reseller near you, visit www.smarttech.com/where.

Dealers and Distributors

For specific technical and pricing enquiries in regards to these diagrams please contact our service parts department.
Pricing is also available on-line via the SOURCE website (source.smarttech.com).

Web Form: www.smarttech.com/contactserviceparts
Phone: 1.888.42.SMART
International: +1.403.245.0333

SPNL-4084 Parts



Item	Part No.	Qty	Description
1	01-00257	2	Battery, AAA
2	1021284	1	Assembly, remote control, SPNL-4000 series NOTE: Includes remote and item 1.
3	1021689	1	Hardware kit, pen ledge
4	1021917	1	Cable, video, HD15 male to HD15 male 6' (1.8 m)
5	93-00828-20	1	Cable, USB, A-B, 16' (5.0 m)
6	1022063	1	Cable, power, North America, 8' (2.4 m)
6	93-055	1	Cable, power, United Kingdom, 8' (2.4 m)
6	93-056	1	Cable, power, Autstralia, 8' (2.4 m)
6	93-054	1	Cable, power, Europe, 8' (2.4 m)
6	93-00708-20	1	Cable, power, China, 8' (2.4 m)
6	93-00654-20	1	Cable, power, Japan, 8' (2.4 m)
6	93-063	1	Cable, power, South Africa, 8' (2.4 m)
6	1018969	1	Cable, power, Singapore, 14' 9" (4.5 m)
6	1018970	1	Cable, power, India, 14' 9" (4.5 m)

6	1018971	1	Cable, power, Saudi Arabia, 14' 9" (4.5 m)
6	1018972	1	Cable, power, Brazil, 14' 9" (4.5 m)
6	1025597	1	Cable, power, Argentina, 14' 9" (4.5 m)
6	1025603	1	Cable, power, Chile and Italy, 14' 9" (4.5 m)
7	RPEN-SBM6	1	Replacement Pens for SMART Board SBM600 and SPNL-4000 Series - Set of Two
8	1028239	1	Pen tray
Not shown	1027427	1	Kit, packaging, SPNL-4084