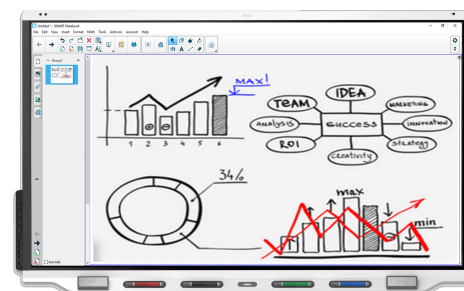


SMART Board® 7000R series

SBID-7075R

SBID-7086R



Display

Screen sizes (diagonal)	75", 86"
Backlight	LED
Aspect ratio	16:9
Maximum display resolution	4K UHD (3840 × 2160)
Refresh rate	60 Hz
Lifespan	≥ 50,000 hours
Brightness (maximum)	≥ 350 cd/m ²
Response time	≤ 8 ms
Viewing angle	178°
Glass	Fully heat-tempered, anti-glare
Glass thickness	4 mm
Frame color	White
Convenience buttons	Power, volume, mute, screen shade, freeze frame
Sensors	Proximity (x2), ambient light, infrared
Audio	2 integrated 15 W speakers

Interactive experience

Touch technology	HyPr Touch™ with EMR
Touch features	Simultaneous Tool Differentiation™ Object Awareness™ Pen ID™ Silktouch™ Pressure sensitivity True palm rejection
Typical response time	≤ 10 ms
Frame rate	≥ 100 Hz
Accuracy	±1 mm (over 90% area)
Minimum object size	2 mm
Multitouch capabilities	26 (20 touch, 4 pen, 2 eraser) – Windows® and Mac 10 – Chrome OS™
Tools included	Pens (x4) Erasers (x2)
Tool holders	Intelligent, magnetic, frame-mounted

Software

SMART Notebook® basic	Included
SMART Ink® and SMART Product Drivers	Included
SMART Learning Suite	Optional

smarttech.com
smarttech.com/contact

© 2021–2022 SMART Technologies ULC. All rights reserved. SMART Board, SMART Notebook, SMART Ink, HyPr Touch, Simultaneous Tool Differentiation, Object Awareness, Pen ID, Silktouch, smarttech, the SMART logo and all SMART taglines are trademarks or registered trademarks of SMART Technologies ULC in the U.S. and/or other countries. The Adopted Trademarks HDMI, HDMI High-Definition Multimedia Interface, and the HDMI Logo are trademarks or registered trademarks of HDMI Licensing Administrator, Inc. in the United States and other countries. All other third-party product and company names may be trademarks of their respective owners. This product and/or use thereof is covered by one or more of the following U.S. patents: www.smarttech.com/patents. Contents are subject to change without notice. March 30, 2022.

PC computing	
OPS support	✓
OPS-C support	✓
PC module power supported OPS	60 W
Optional computing modules	SMART OPS PC with Windows 10 Pro SMART Chromebox

Inputs	Front	Back
OPS PC accessory slot (60 W devices)	–	1
HDMI® 2.0 with HDCP 1.4 and HDCP 2.2 support	1	3
VGA video	–	1
Stereo 3.5 mm	–	1
RS-232 room control (DB-9 connector)	–	1
RJ45 Ethernet (passthrough)	–	2
USB Type-C 4K @ 60Hz Display Port Alternate Mode, touch, and digital audio; 60 W power delivery	1	–
USB 2.0 Type-A	–	1
USB 3.0 Type-A	2	3
USB 2.0 Type-B	–	2
USB 3.0 Type-B	1	–

Outputs	Front	Back
HDMI 2.0 with HDCP 2.2 support	–	1
Stereo 3.5 mm	–	1
Audio S/PDIF	–	1
RS-232 room control (DB-9 connector)	–	1

Included cables and accessories	Qty
Country-specific power cable	1
USB 2.0 cable	1
Pens	4
Erasers	2
External dual-band 2.4 and 5 GHz antennae	2
Remote control	1
AAA batteries	2
WM-SBID-200 wall mount	1
Illustrated installation instructions	1
Important information document	1

Connectivity	
Wired	RJ45 (x2) 1000baseT

Storage and operating requirements	
Power requirements	100V to 240V AC, 50 Hz to 60 Hz
Operating temperature	41–95°F (5–35°C)
Storage temperature	–4–140°F (–20–60°C)
Humidity	5–80% relative humidity, non-condensing

Power consumption	
Typical	75": 129 W 86": 169 W
Standby	< 0.5 W

Certification and compliance ¹	
US / Canada	UL, FCC, ISED, TSCA, CONEG Packaging, Proposition 65
EU / EEA / EFTA / UK	CE, UKCA, LVD, CB, EMCD, RED, REACH, RoHS, Battery, WEEE, Packaging, POP, Ecodesign
Australia / New Zealand	RCM
Performance standards	ENERGY STAR®, HDMI

Purchasing information	
Order number: SBID-7075R	SMART Board® 7075R interactive display with SMART Learning Suite
Order number: SBID-7086R	SMART Board 7086R interactive display with SMART Learning Suite
Optional accessories	See smarttech.com/accessories

Warranty	
SMART Assure warranty	Includes advanced hardware replacement and access to onsite support. Terms and conditions vary by region. Contact your local reseller or distributor for information and visit smarttech.com/warranty .

¹Product availability may vary by region.

This product has received additional certifications not listed here.

Cable requirements

HDMI	Certified premium high speed HDMI (18 Gbps) Maximum length: 23' (7 m)
USB 2.0	USB 2.0 certified Hi-Speed (480 Mbps) support Maximum length: 16' (5 m)
USB 3.0	USB 3.0 certified SuperSpeed (5 Gbps) support Maximum length: 9' (3 m)
USB Type-C	USB 3.1 certified SuperSpeed (5 Gbps) support Maximum length: 6' (2 m)
More information	See smarttech.com/kb/171538

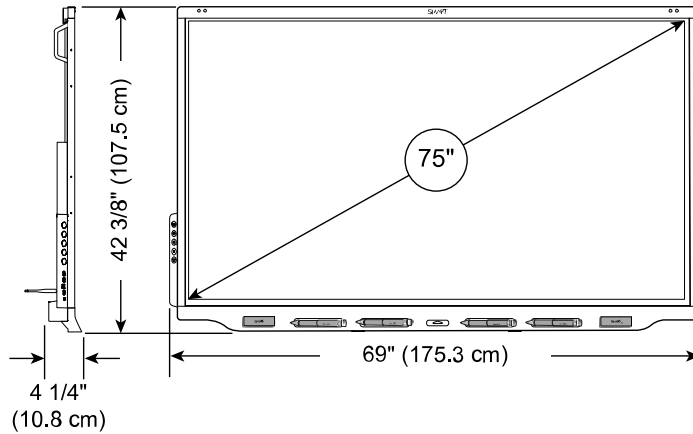
Installation, dimensions, and weights

Notes

- All dimensions $\pm 1/8"$ (0.3 cm). All weights ± 2 lb. (0.9 kg).
- Product ships upright.

SBID-7075R

Dimensions



Weight

128 lb. (58 kg)

Shipping dimensions (including pallet)

76" \times 53 3/8" \times 11 3/4"
(193 cm \times 135.5 cm \times 30 cm)

Shipping weight

187 lb. (85 kg)

VESA mount

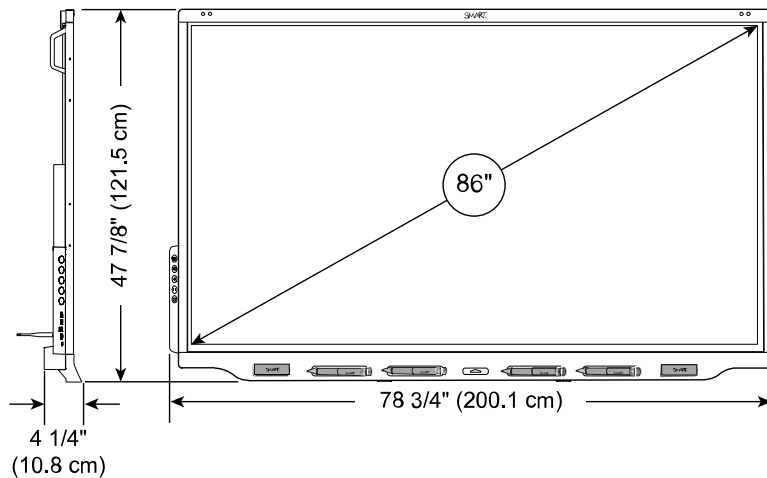
M8, 800 \times 400 mm

Handles

2

SBID-7086R

Dimensions



Weight

168 lb. (76 kg)

Shipping dimensions (including pallet)

85 1/4" \times 59 1/2" \times 11 3/4"
(216.5 cm \times 151 cm \times 30 cm)

Shipping weight

238 lb. (108 kg)

VESA mount

M8, 800 \times 600 mm

Handles

2