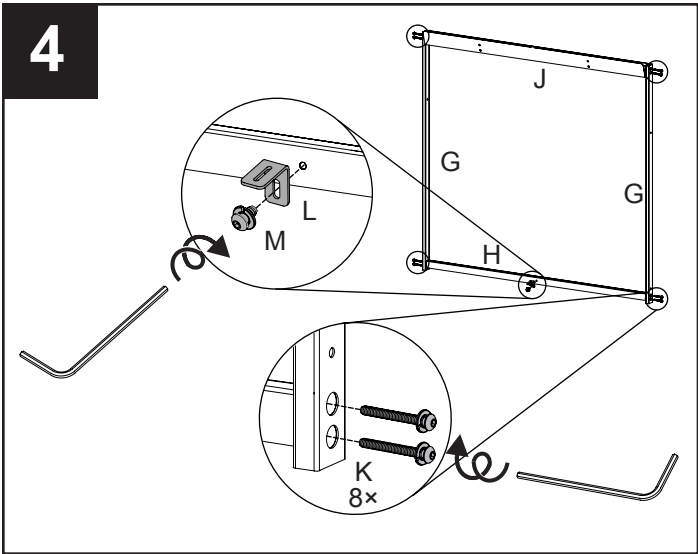
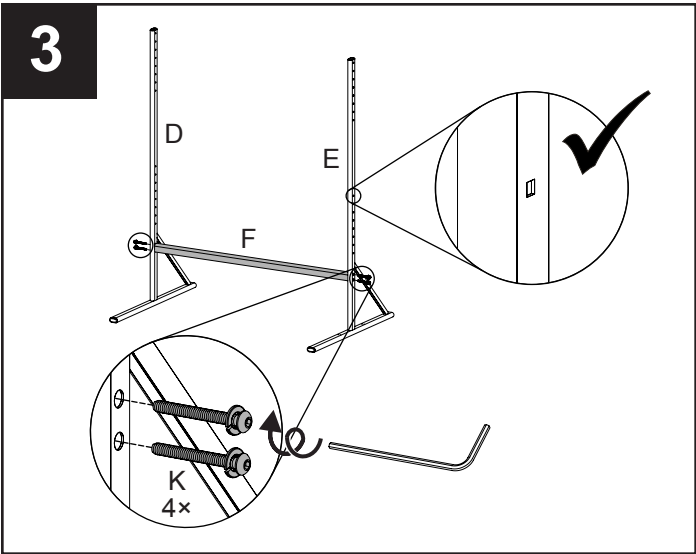
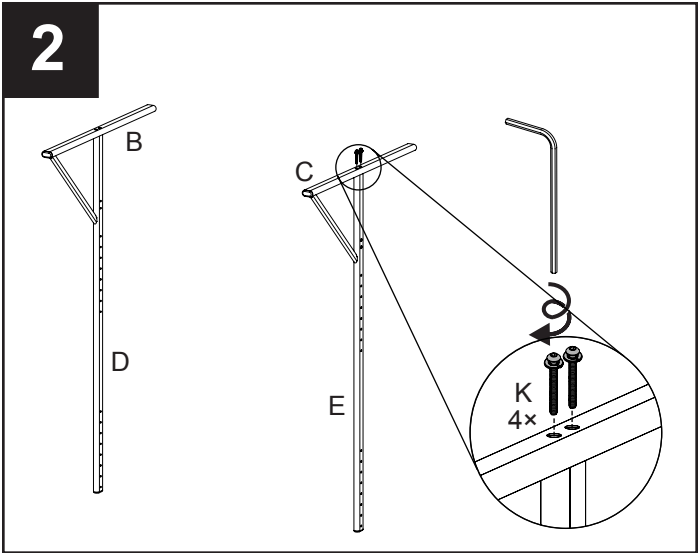
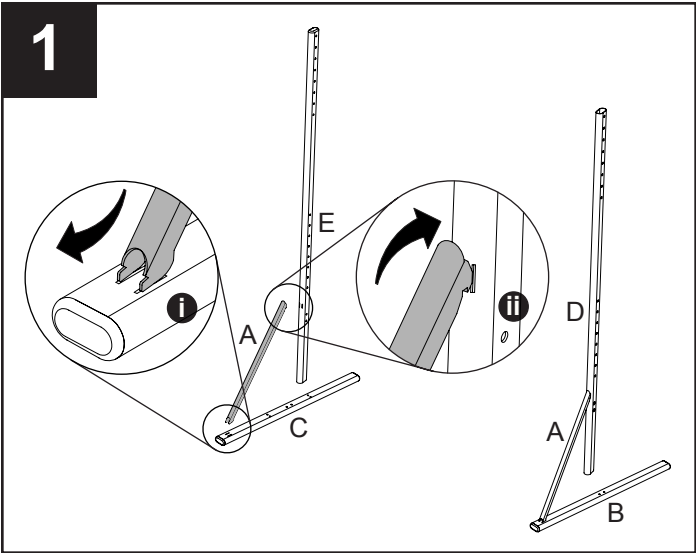
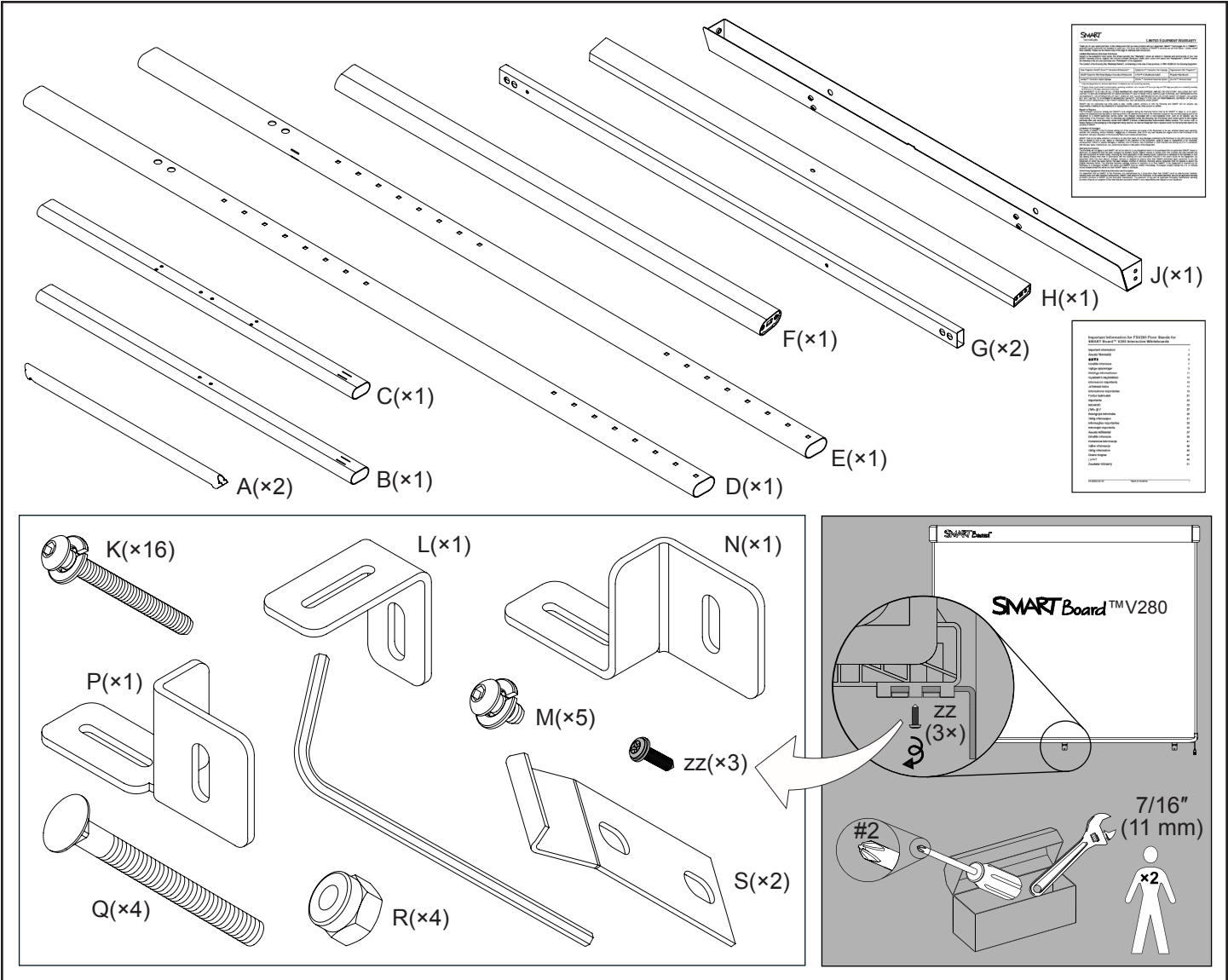
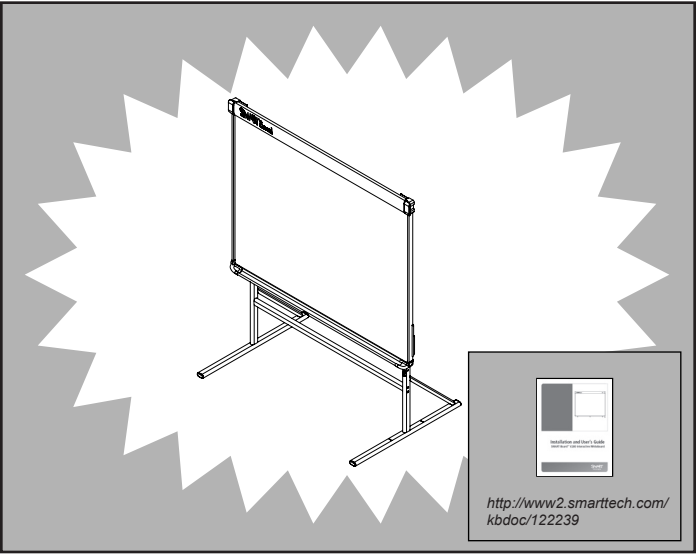
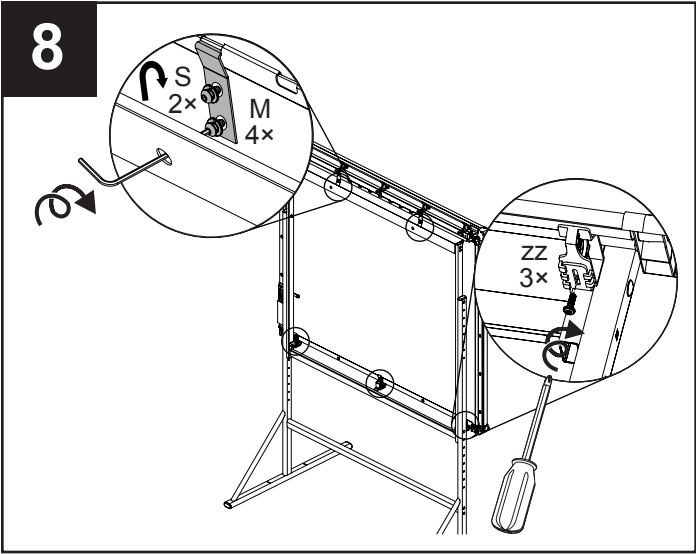
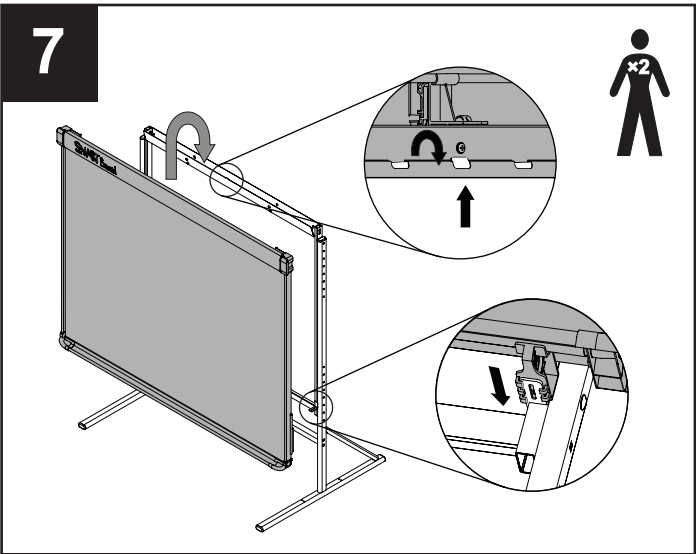
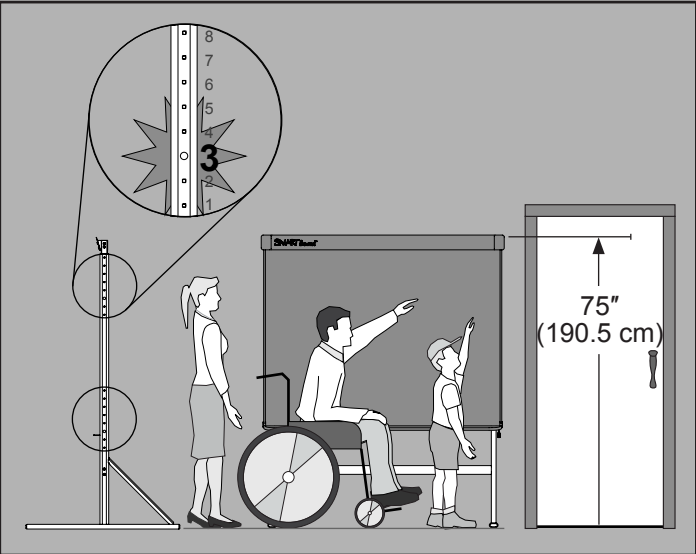
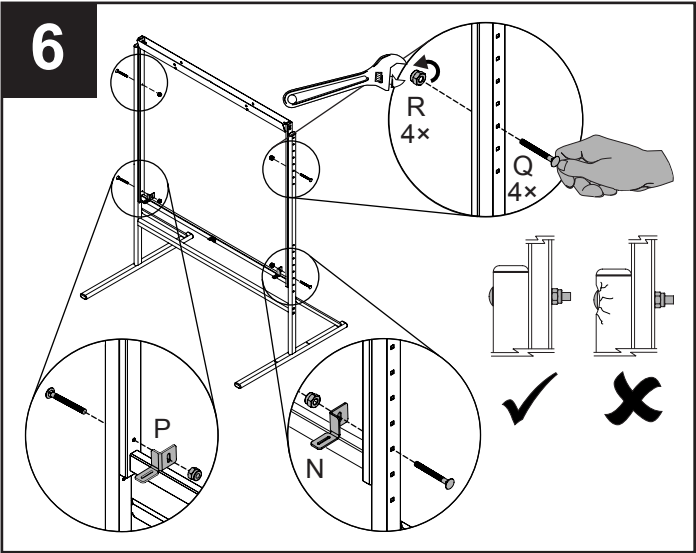
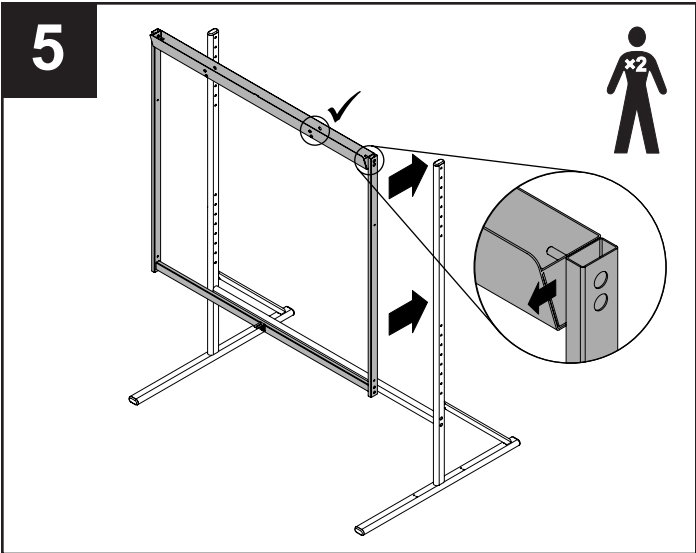




FSV280 Floor Stand for SMART Board™ V280 Interactive Whiteboards





Waste Electrical and Electronic Equipment Regulations

 This section contains information about the Waste Electrical and Electronic Equipment Regulations (WEEE) that apply to all electrical and electronic equipment within the European Union.

 When you dispose of any electrical or electronic equipment, including SMART products, we strongly encourage you to contact your local WEEE recycling agency for recycling and disposal advice.

Your SMART product required the extraction and use of natural resources for its production. It may contain hazardous substances. By disposing of electrical and electronic equipment appropriately, you lower the impact of these substances upon health and the environment and reduce the pressure on natural resources. Recycling agencies can reuse or recycle most of the materials from your product.

Please think about how you intend to dispose of any product that has a WEEE symbol or accompanying WEEE guidelines.

If you need more information on the collection, reuse and recycling of electrical and electronic equipment, please contact your local WEEE recycling agency. Alternatively, contact your local reseller or SMART Technologies for information on the environmental performance of our products.