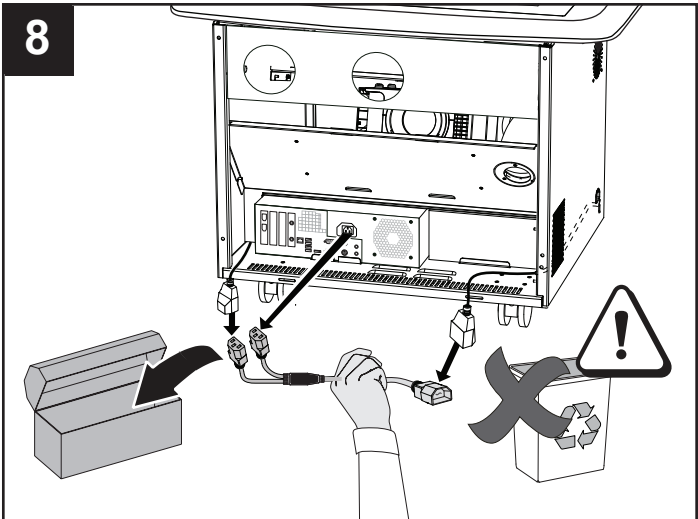
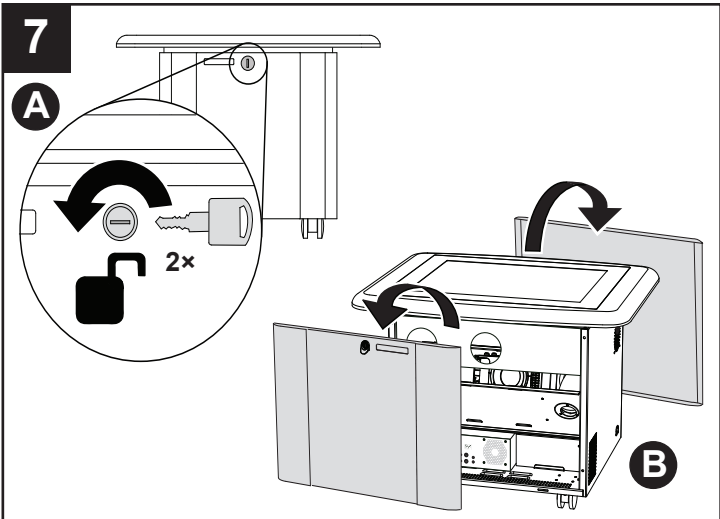
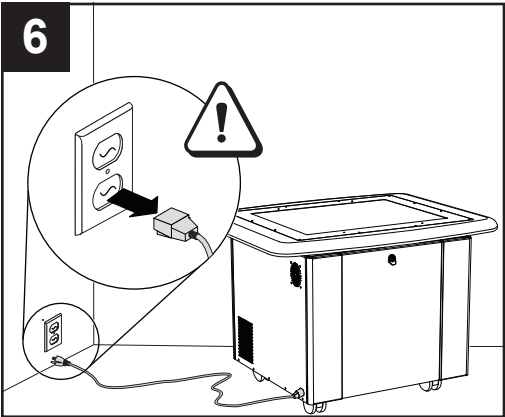
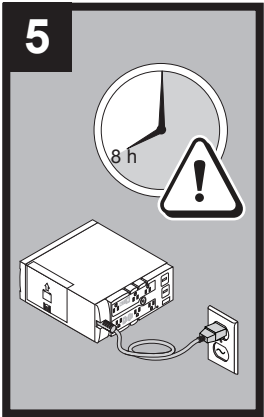
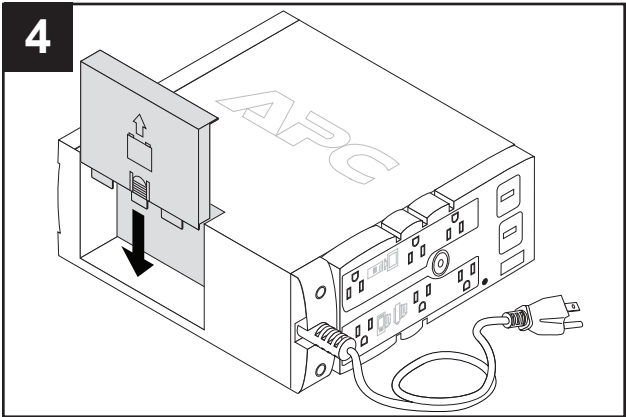
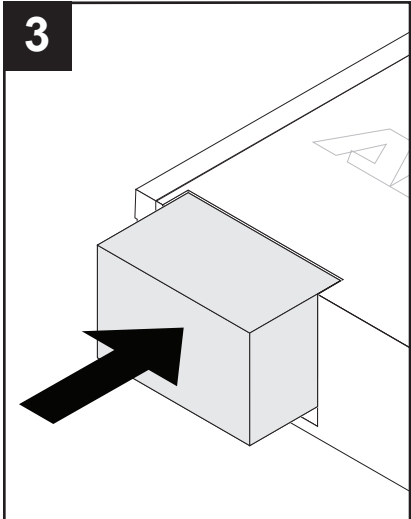
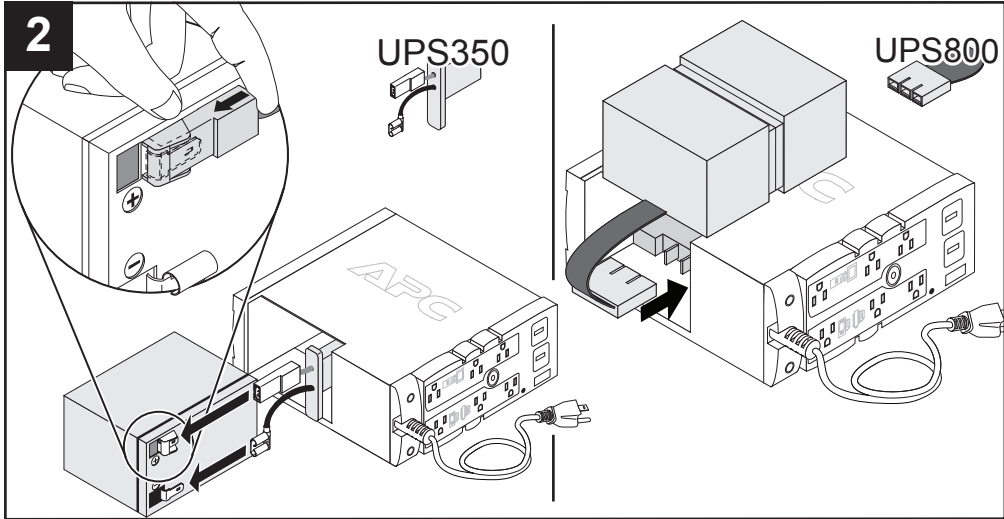
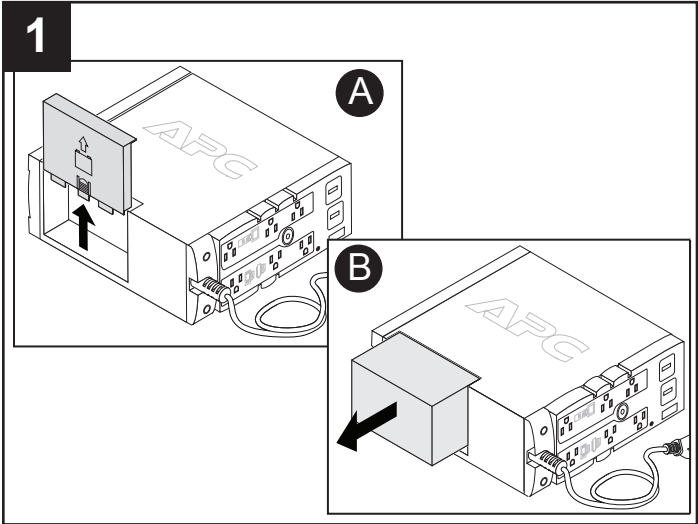
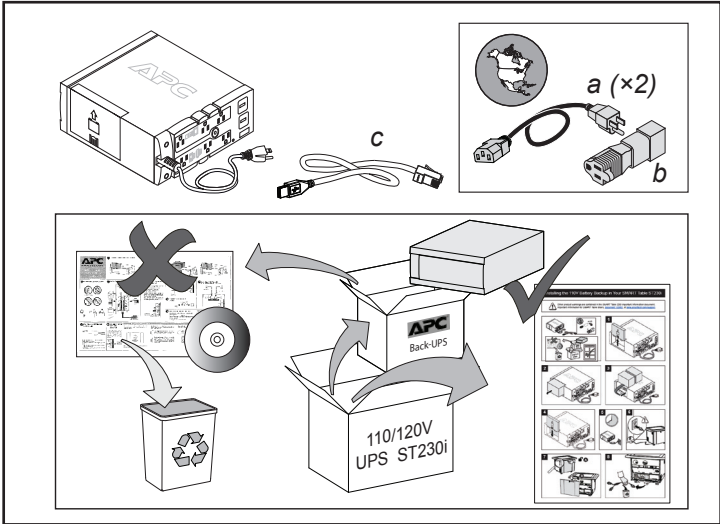
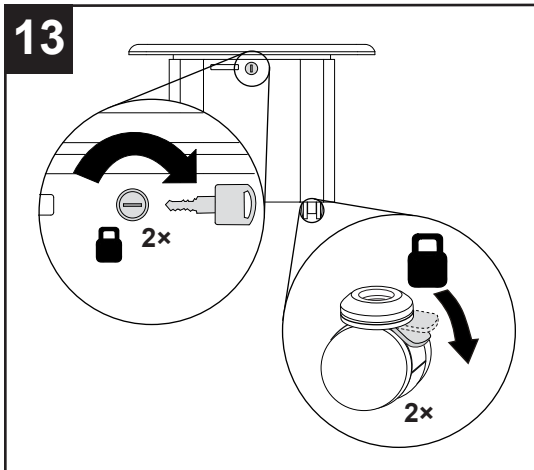
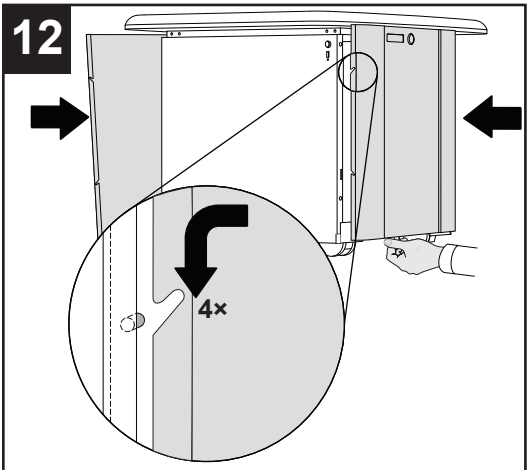
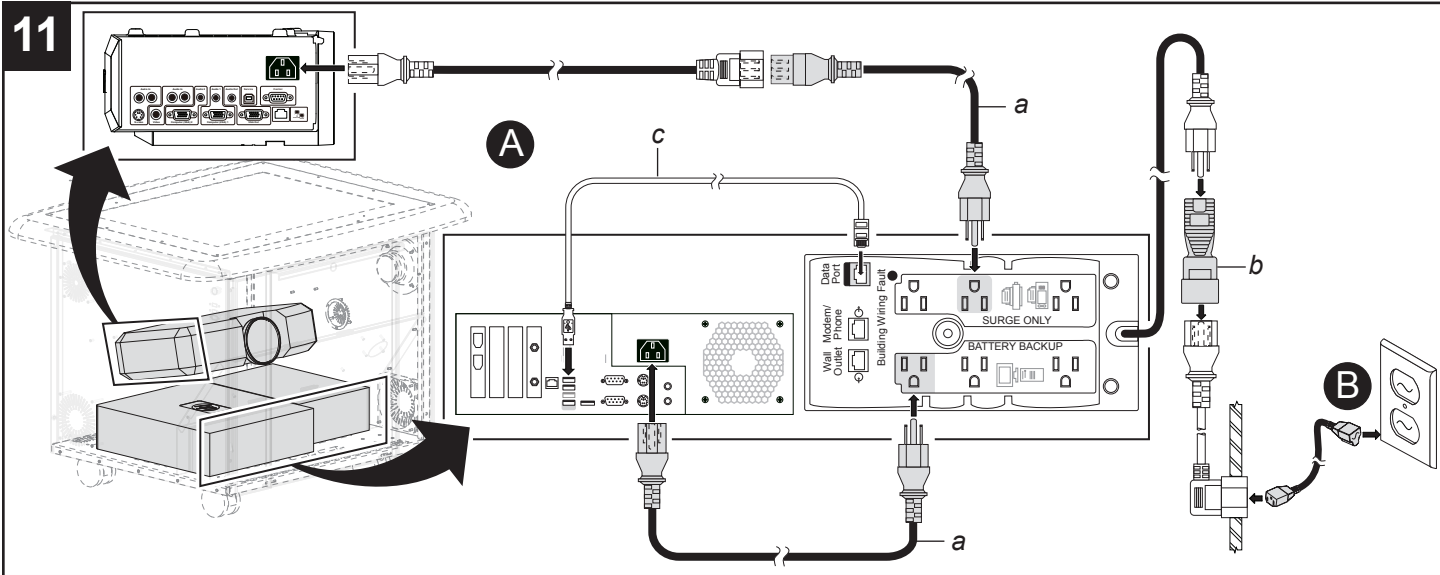
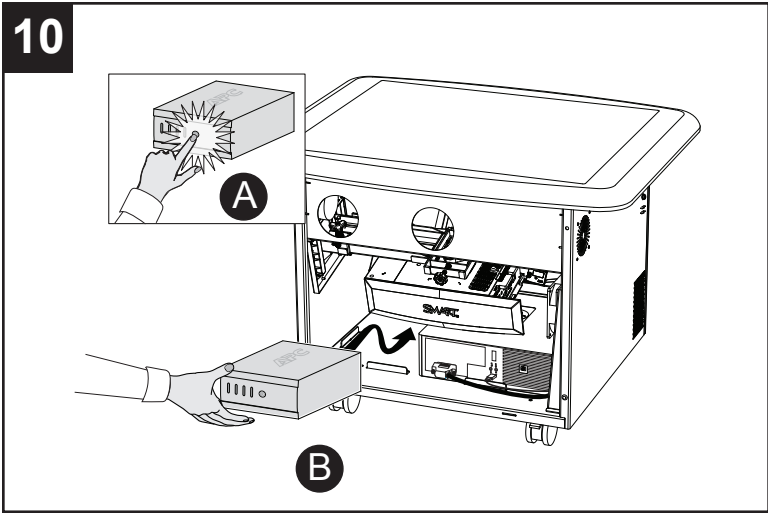
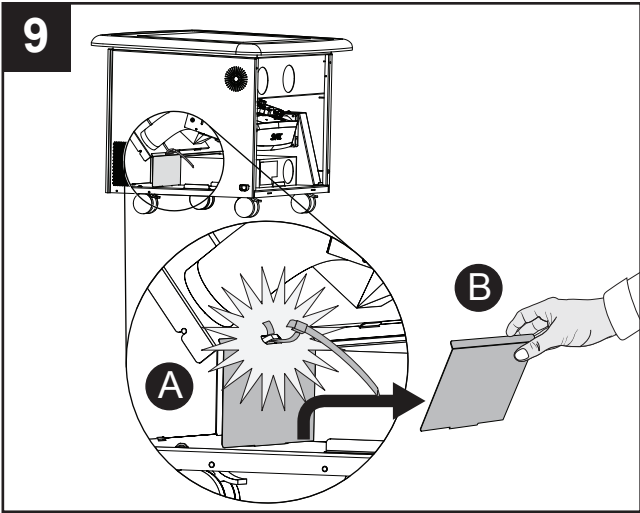


# Installing the 110/120V battery backup in your SMART Table ST230i



Product warnings are contained in *Important Information for SMART Table Users* at [smarttech.com/kb/130801](http://smarttech.com/kb/130801).





#### Hardware environmental compliance

SMART Technologies supports global efforts to ensure that electronic equipment is manufactured, sold and disposed of in a safe and environmentally friendly manner.

#### Waste Electrical and Electronic Equipment Regulations (WEEE directive)

Waste Electrical and Electronic Equipment regulations apply to all electrical and electronic equipment sold within the European Union. When you dispose of any electrical or electronic equipment, including SMART Technologies products, we strongly encourage you to properly recycle the electronic product when it has reached end of its life. If you require further information, please contact your reseller or SMART Technologies for information on which recycling agency to contact.

#### Restriction of Certain Hazardous Substances (RoHS directive)

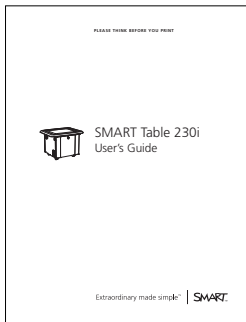
This product meets the requirements of the European Union's Restriction of Certain Hazardous Substances (RoHS) directive 2002/95/EC. Consequently, this product also complies with other regulations that have arisen in various geographical areas, and that reference the European Union's RoHS directive.

#### Batteries

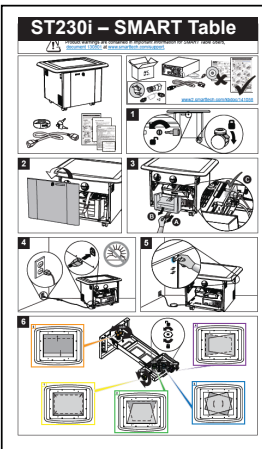
Batteries are regulated in many countries. Check with your reseller to find out how to recycle used batteries. Special handling may apply to button cells that may contain perchlorate.

#### Packaging

Many countries have regulations restricting the use of certain heavy metals in product packaging. The packaging used by SMART Technologies to ship products complies with packaging laws.



[smarttech.com/kb/141190](http://smarttech.com/kb/141190)



[smarttech.com/kb/141081](http://smarttech.com/kb/141081)



[www.smarttech.com/support](http://www.smarttech.com/support)  
[www.smarttech.com/contactsupport](http://www.smarttech.com/contactsupport)

**SMART**™

© 2010–2011 SMART Technologies ULC. All rights reserved. The SMART logo and smarttech are trademarks or registered trademarks of SMART Technologies ULC in the U.S. and/or other countries. All other third party products and company names are mentioned for identification purposes only and may be trademarks of their respective owners. Patent No. US6141000, US6326954, US6741267, US7151533, US7499033, CA2058219 and CA2252302. Other patents pending. Contents are subject to change without notice. 05/2011.

99-01017-22 D0