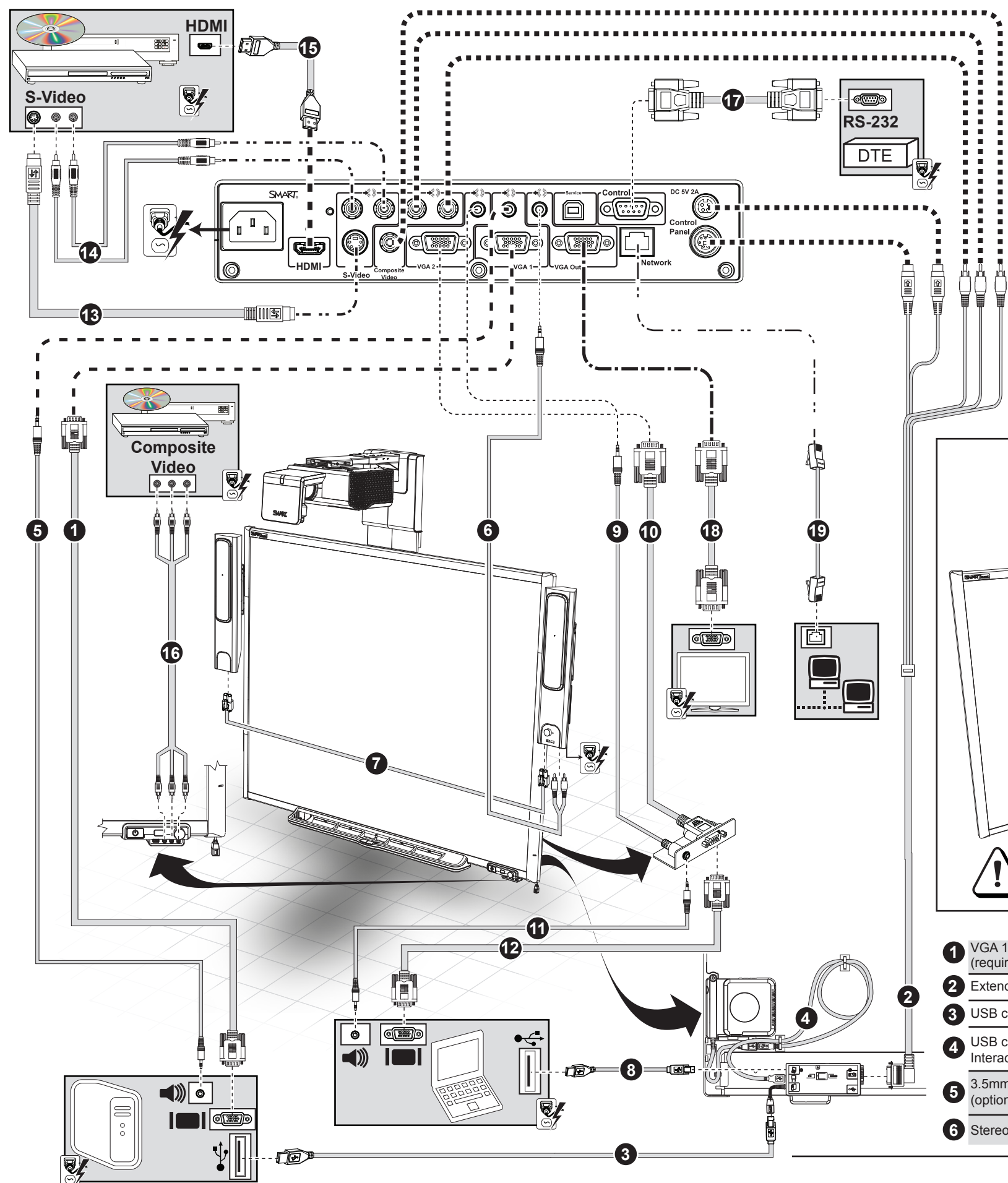


# SMART Board® 600i5 series interactive whiteboard system quick installation guide



[smarttech.com/kb/154547](http://smarttech.com/kb/154547)

[smarttech.com/kb/154549](http://smarttech.com/kb/154549)

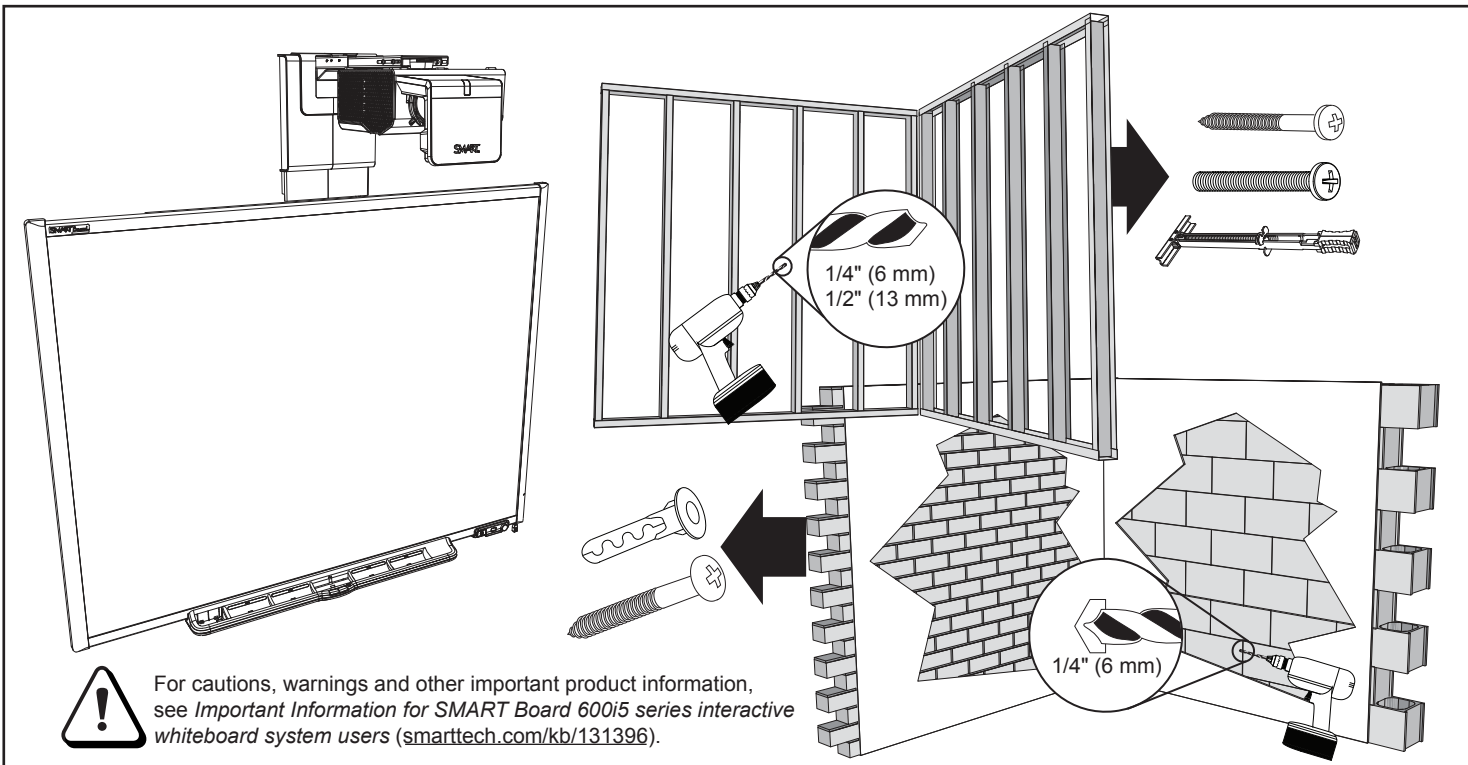
[smarttech.com/kb/147790](http://smarttech.com/kb/147790)

[downloads.smarttech.com/media/trainingcenter/videos/uf75/uf75\\_installation.htm](http://downloads.smarttech.com/media/trainingcenter/videos/uf75/uf75_installation.htm)

[downloads.smarttech.com/media/trainingcenter/videos/uf75/uf75\\_image\\_adjustment.htm](http://downloads.smarttech.com/media/trainingcenter/videos/uf75/uf75_image_adjustment.htm)

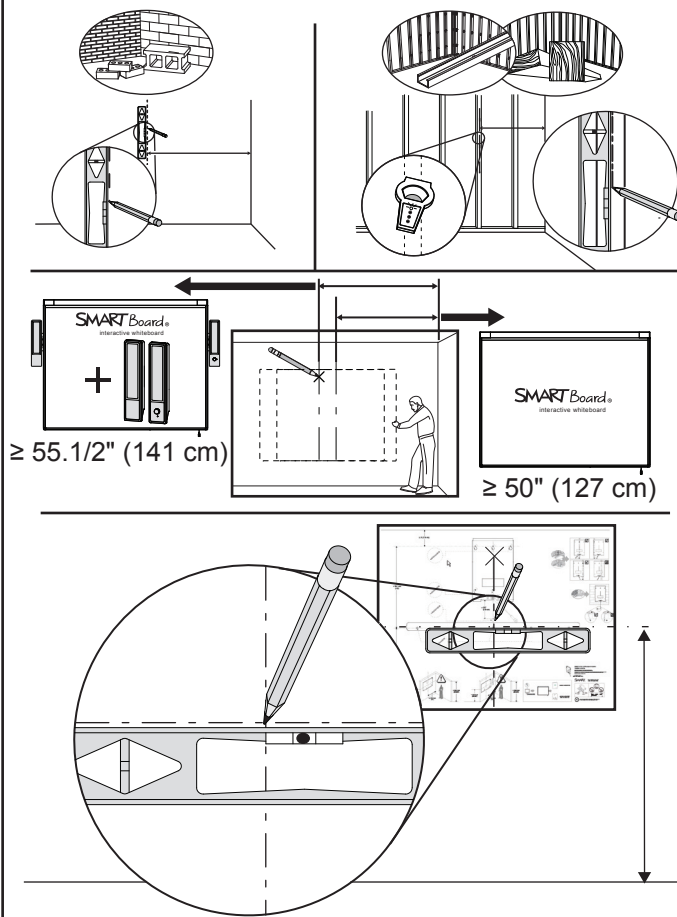
[youtube.com/watch?v=T1a3qRV5m1E](https://www.youtube.com/watch?v=T1a3qRV5m1E)

[youtube.com/watch?v=yCPWy9kCY4g](https://www.youtube.com/watch?v=yCPWy9kCY4g)

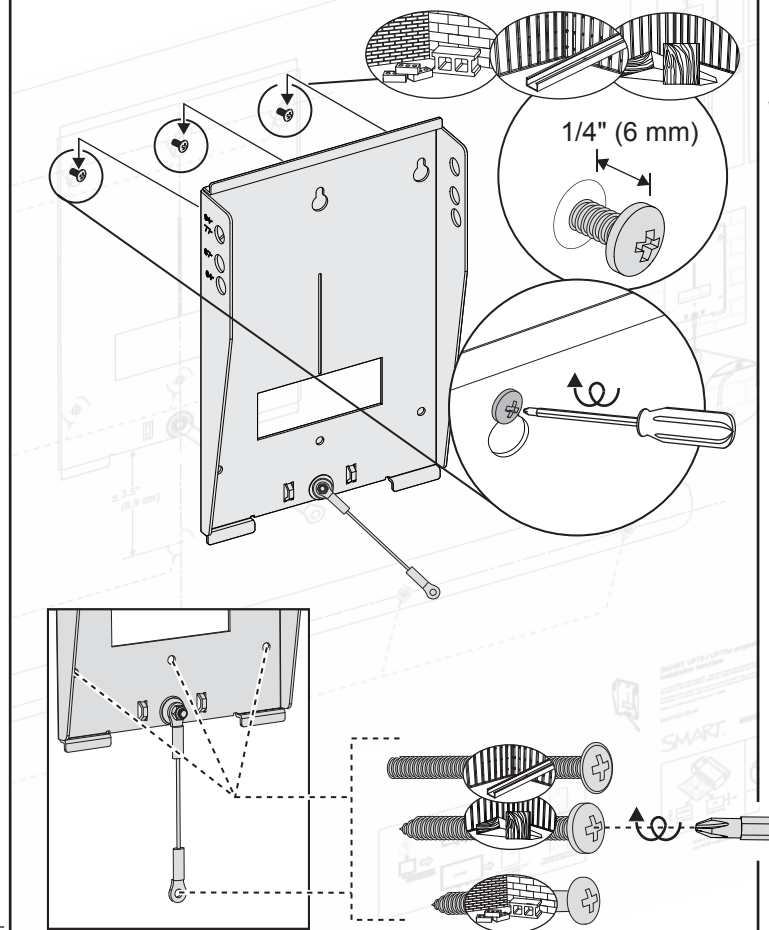


- |  |  |  |
|--|--|--|
| <b>1</b> VGA 1 video input to dedicated computer (required)                  | <b>7</b> Audio cable connecting left and right speakers (optional) | <b>13</b> S-Video cable (optional)                               |
| <b>2</b> Extender Control Panel (ECP) cable                                  | <b>8</b> USB cable to optional computer (optional)                 | <b>14</b> RCA audio cable (optional)                             |
| <b>3</b> USB cable from ECP to dedicated computer                            | <b>9</b> 3.5 mm audio cable to VGA connection kit (optional)       | <b>15</b> HDMI cable (optional)                                  |
| <b>4</b> USB cable from ECP to SMART Board Interactive whiteboard controller | <b>10</b> VGA cable to VGA connection kit (optional)               | <b>16</b> Composite video Cable (optional)                       |
| <b>5</b> 3.5mm audio cable to dedicated computer (optional)                  | <b>11</b> 3.5 mm audio to optional computer (optional)             | <b>17</b> RS-232 cable to Data Terminal Equipment DTE (optional) |
| <b>6</b> Stereo Cable (optional)   | <b>12</b> VGA cable to optional computer (optional)                | <b>18</b> VGA cable to optional display (optional)               |
|  |  | <b>19</b> Cat 5 network cable (optional)                         |

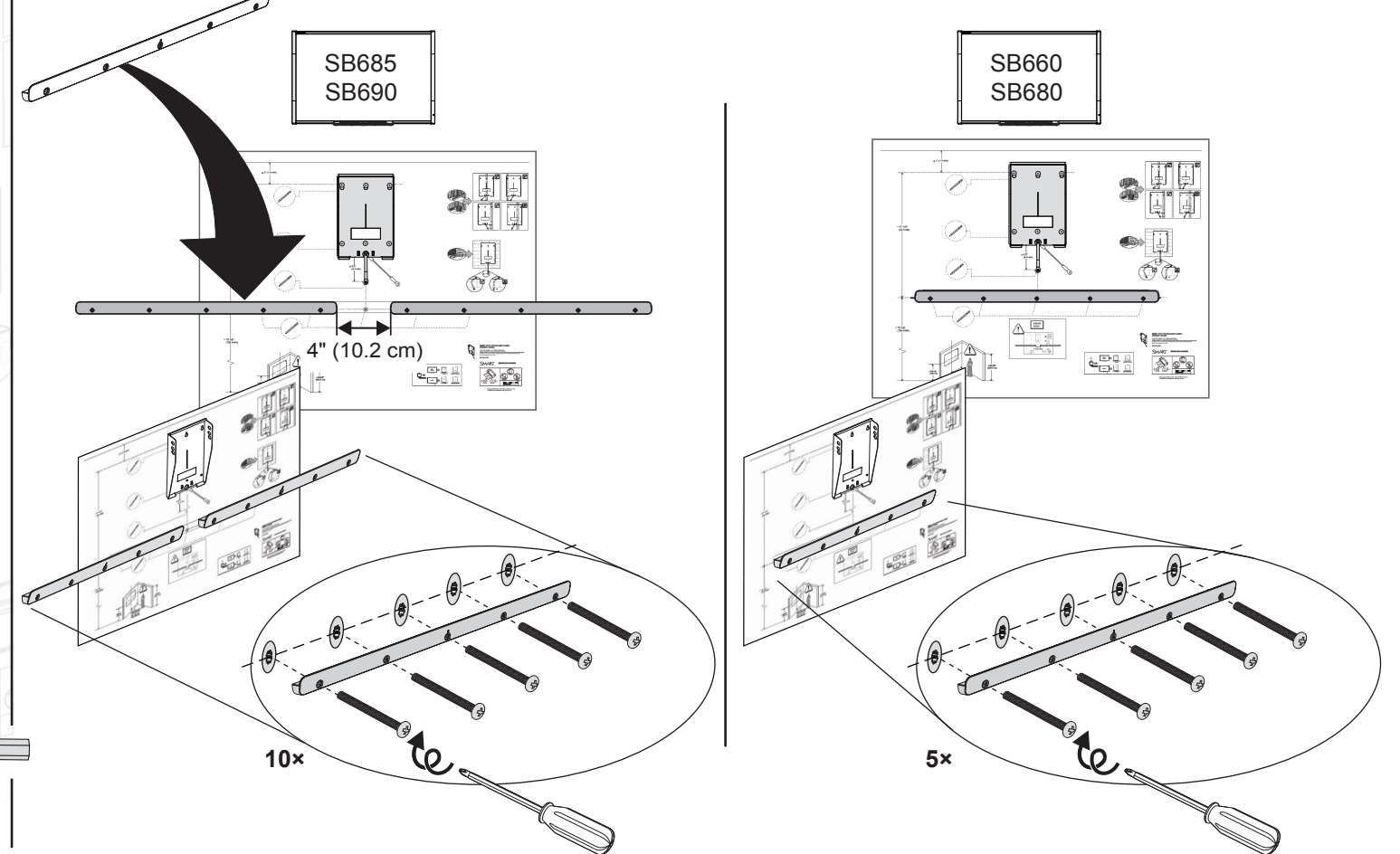
# 1 Chapter 1, steps 1–7



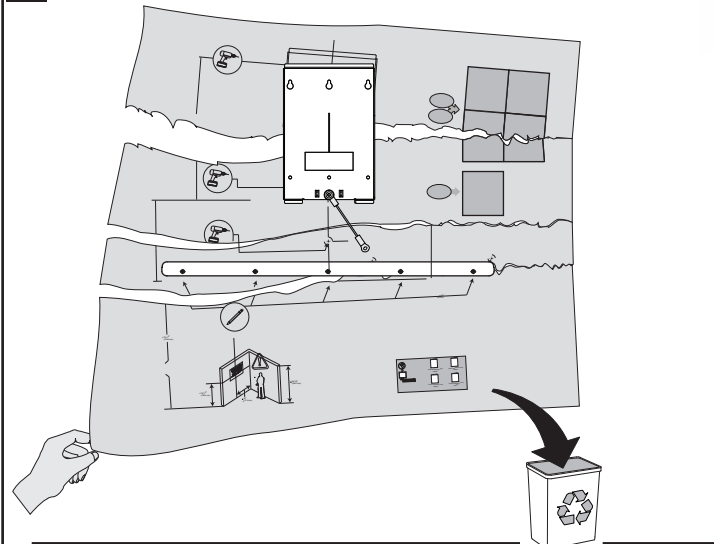
# 2 Chapter 2, steps 1–2



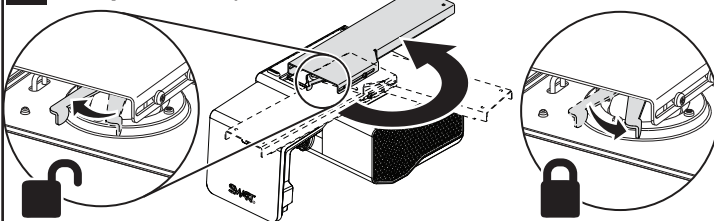
# 3 Chapter 3, steps 1–2



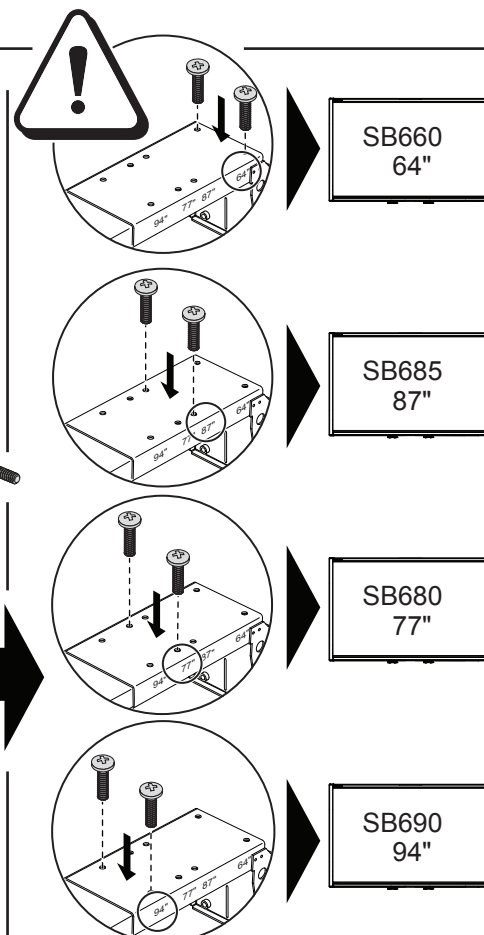
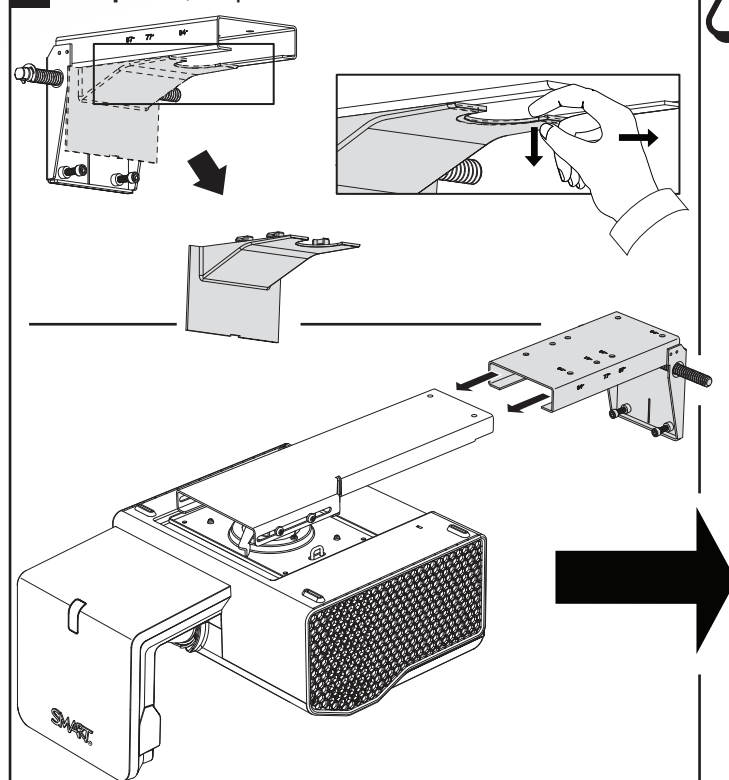
# 4 Chapter 3, steps 3–4



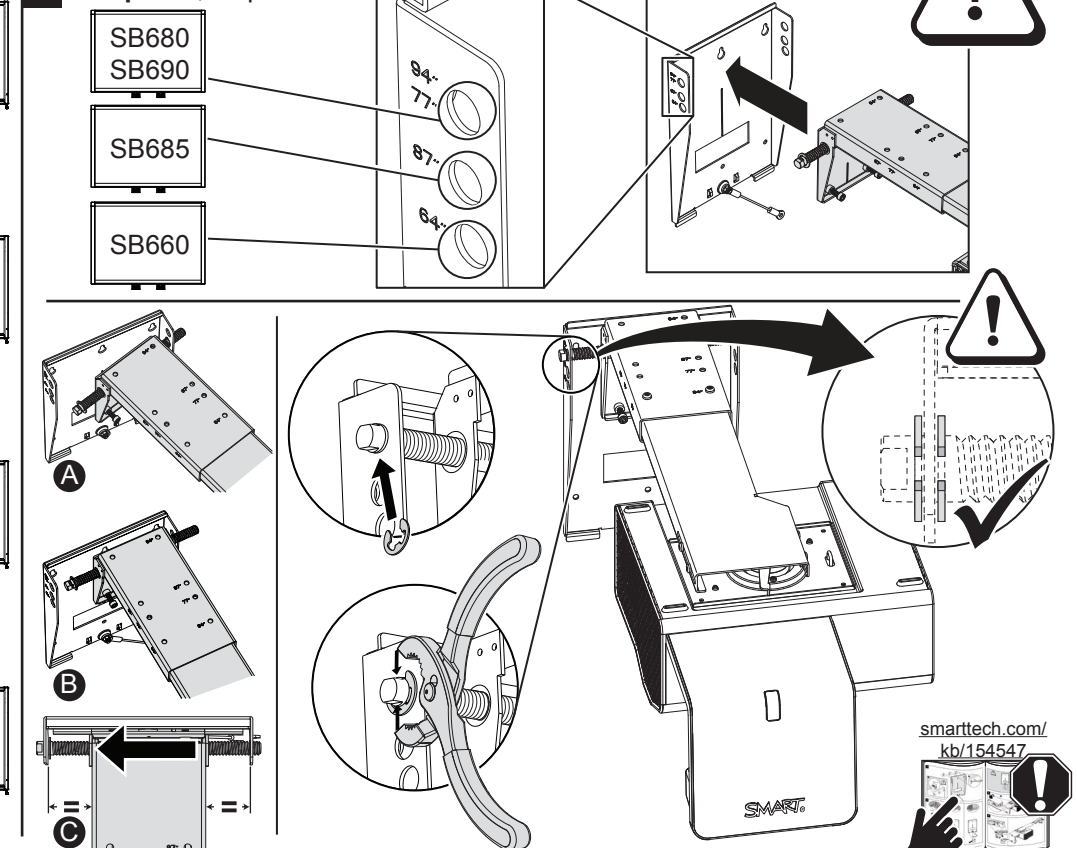
# 5 Chapter 2, step 3



# 6 Chapter 3, step 4

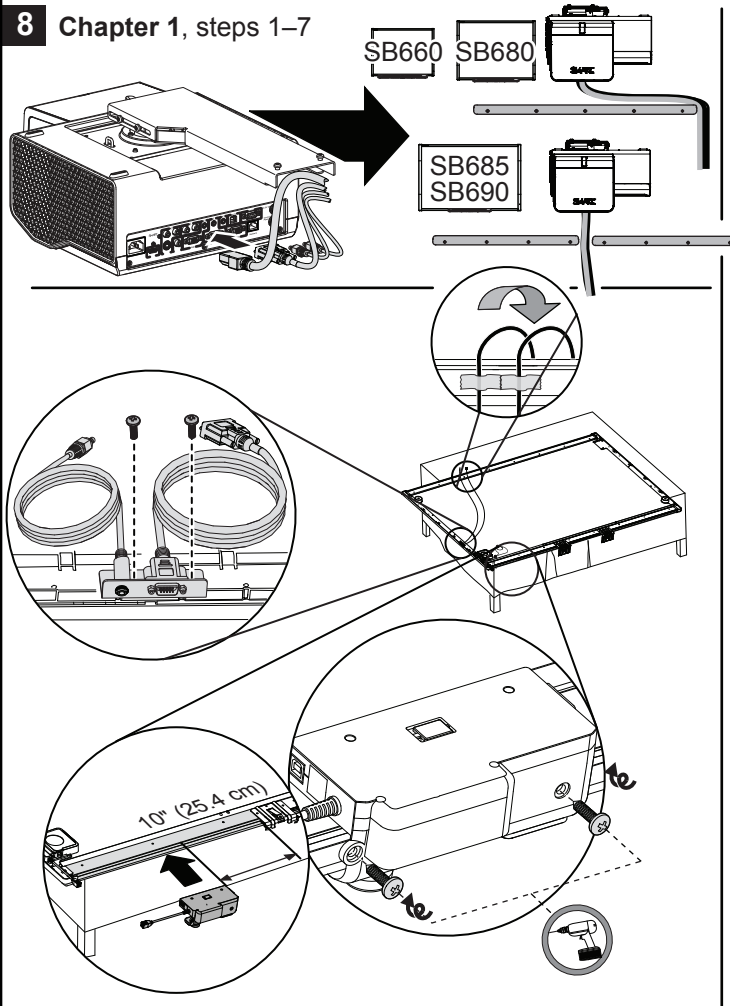


# 7 Chapter 3, steps 5–7

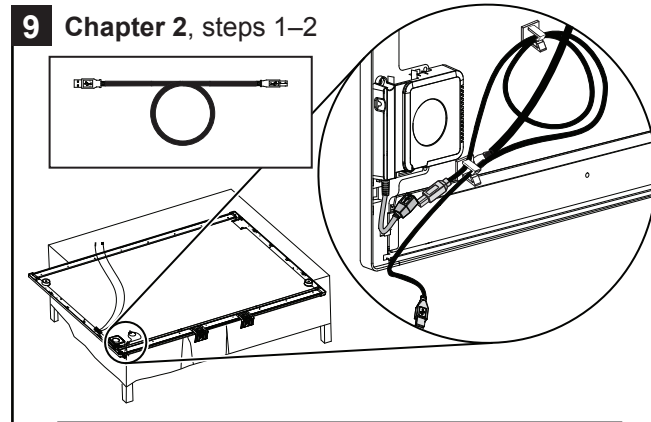




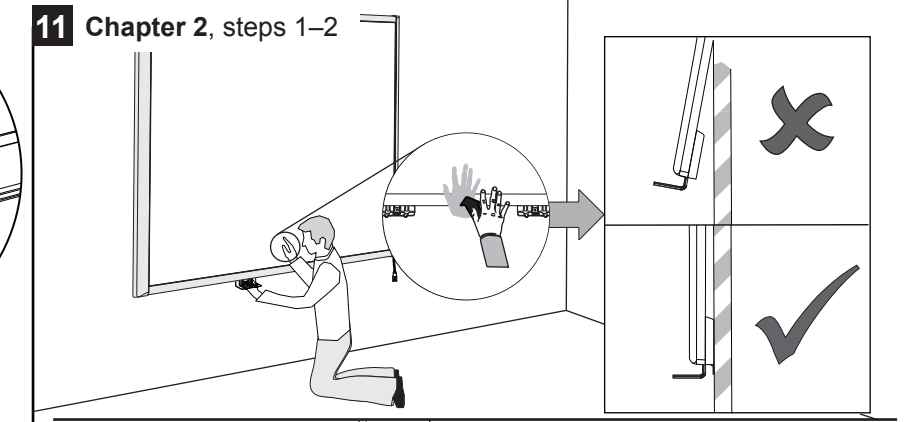
**8 Chapter 1, steps 1-7**



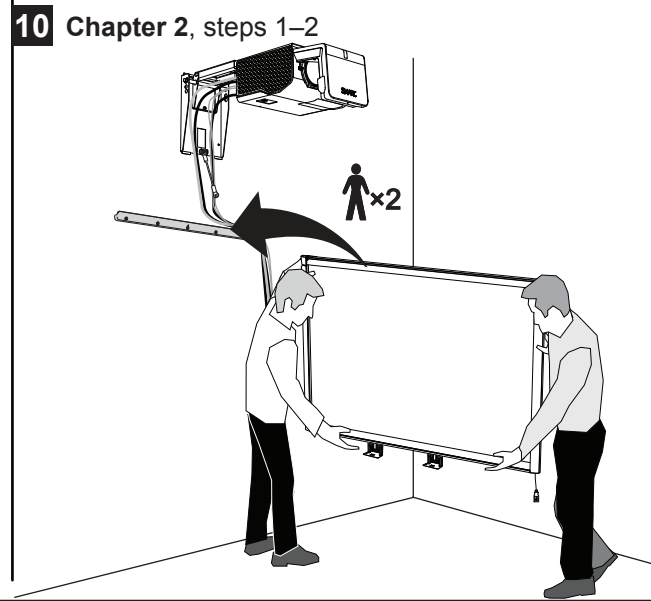
**9 Chapter 2, steps 1-2**



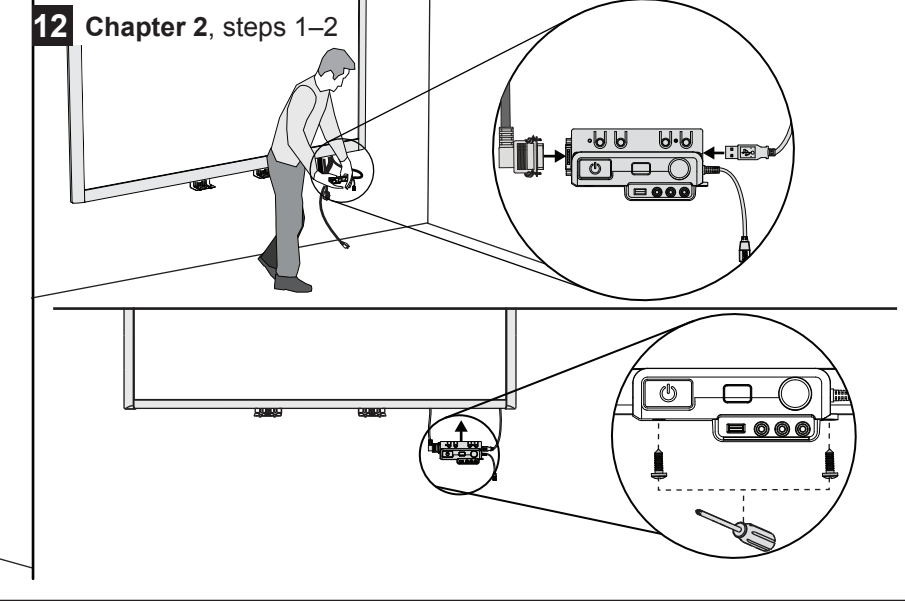
**11 Chapter 2, steps 1-2**



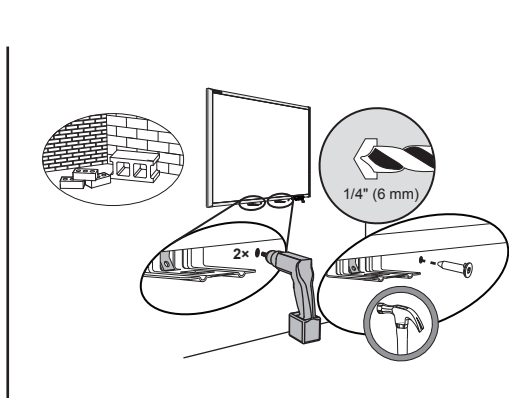
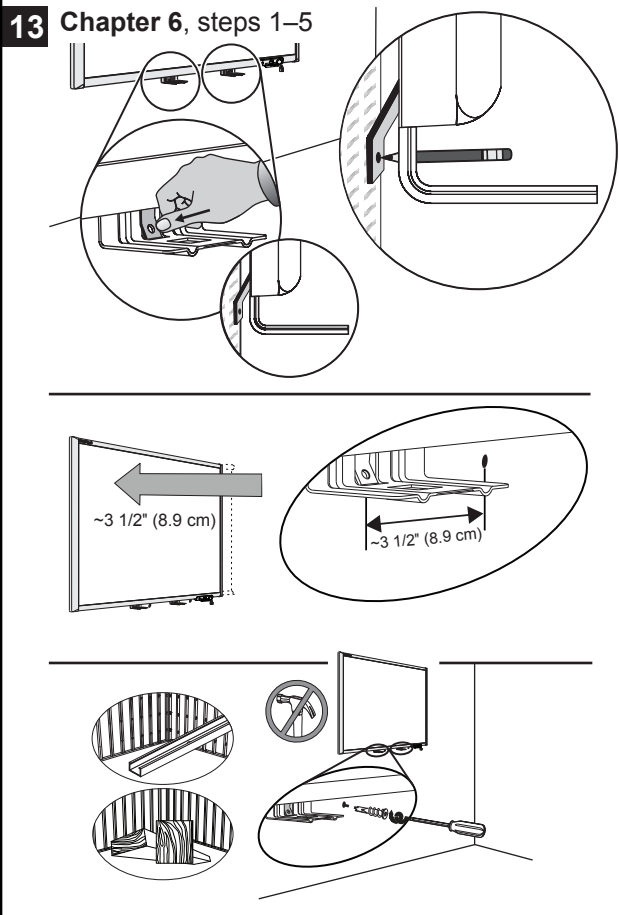
**10 Chapter 2, steps 1-2**



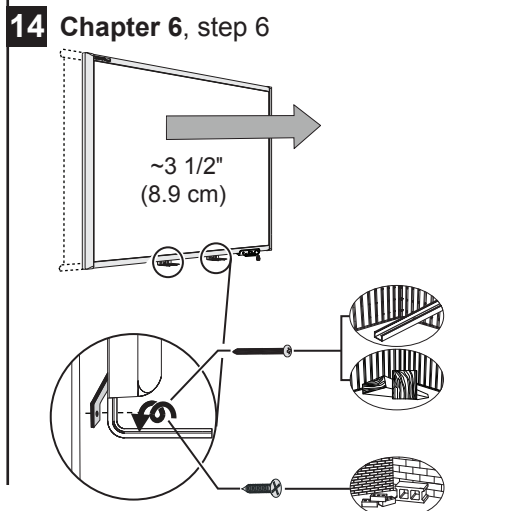
**12 Chapter 2, steps 1-2**



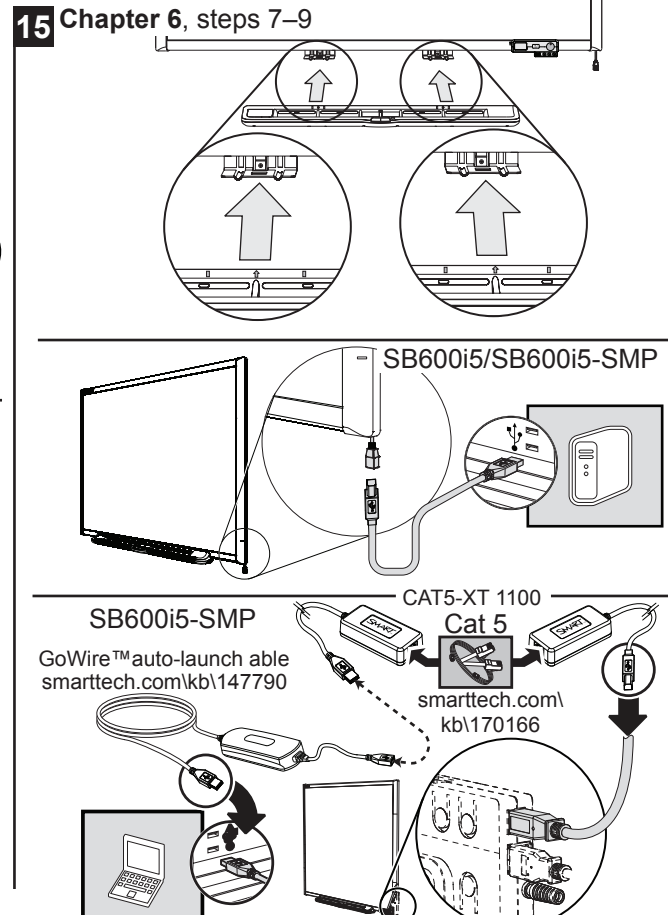
**13 Chapter 6, steps 1-5**



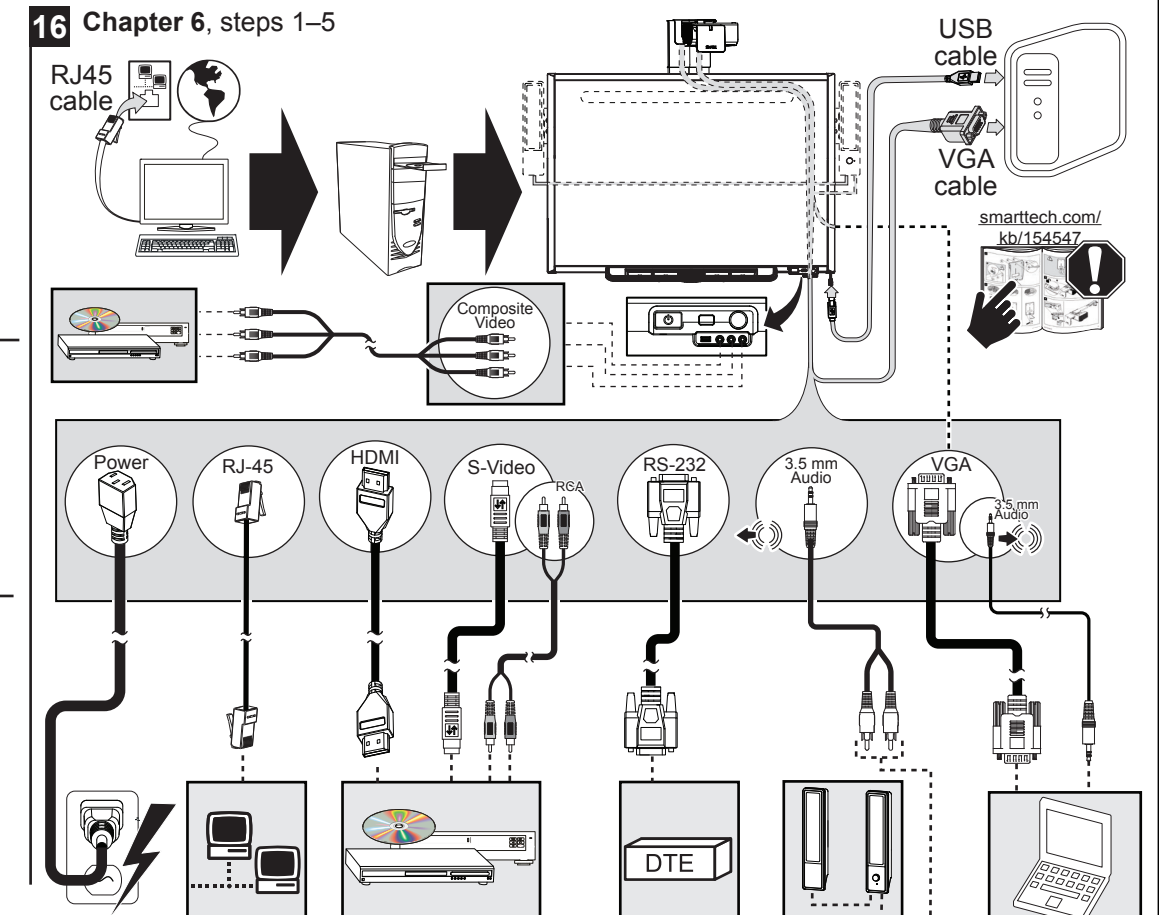
**14 Chapter 6, step 6**



**15 Chapter 6, steps 7-9**



**16 Chapter 6, steps 1-5**



Chapter 5, steps 1–9