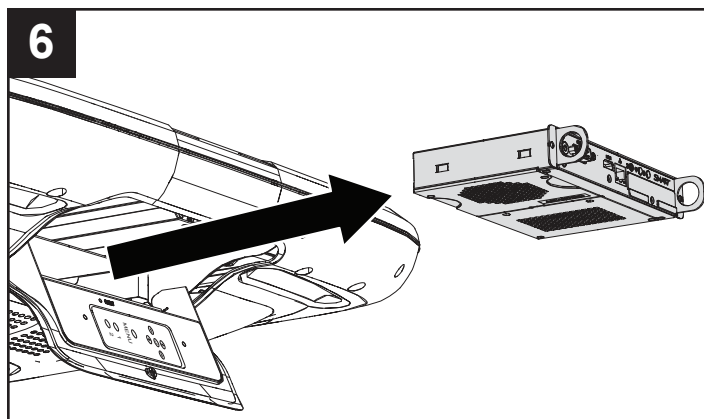
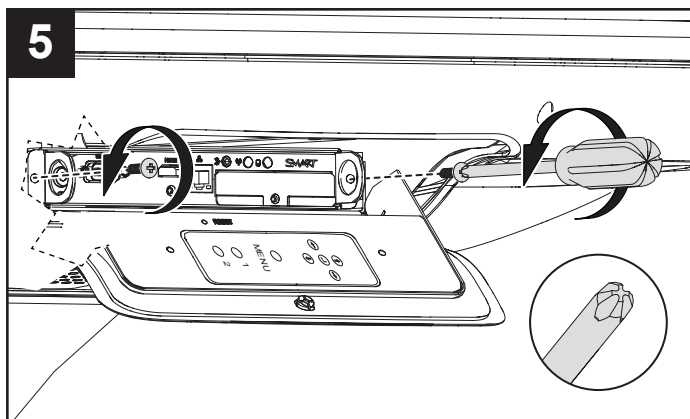
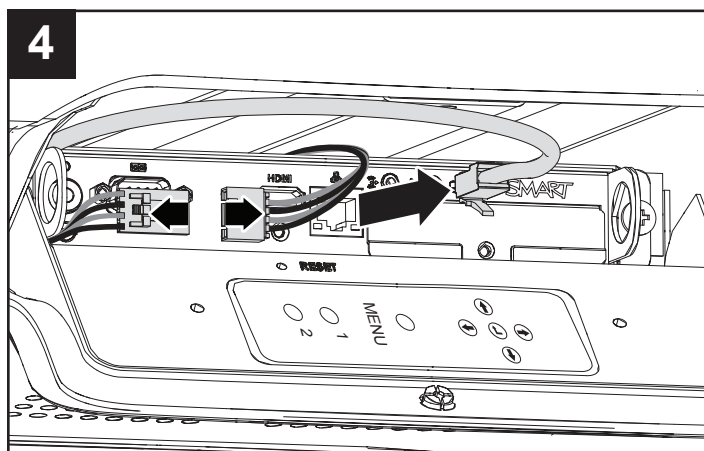
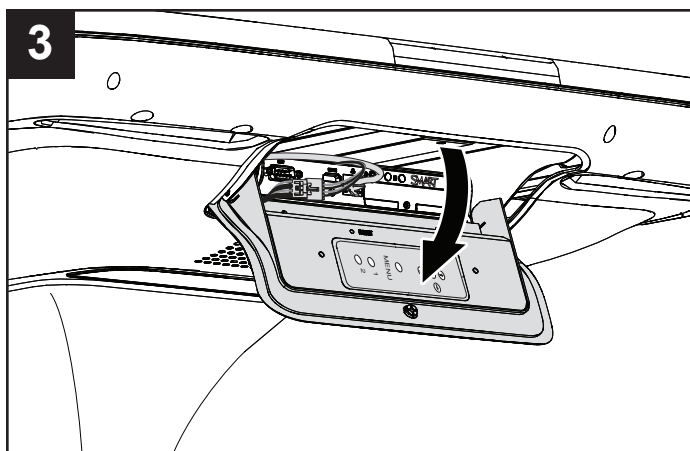
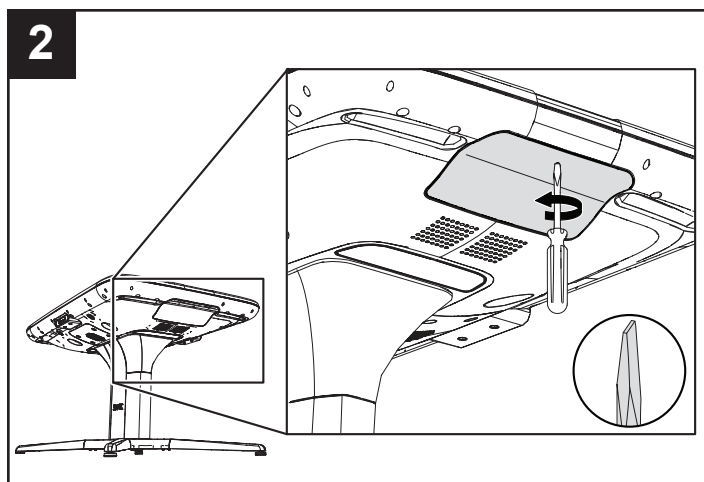
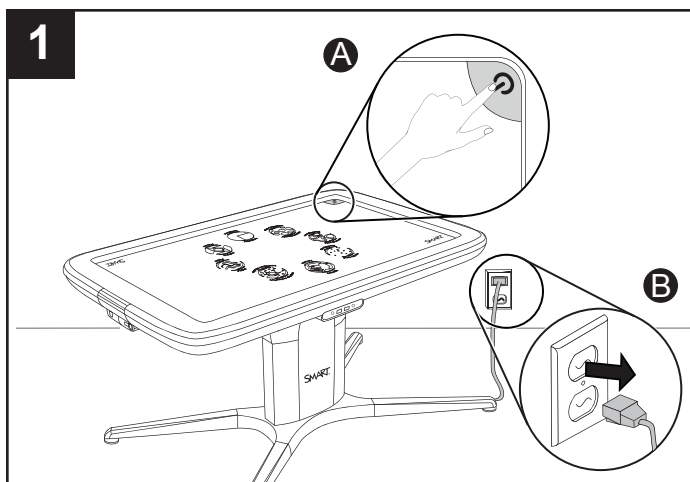
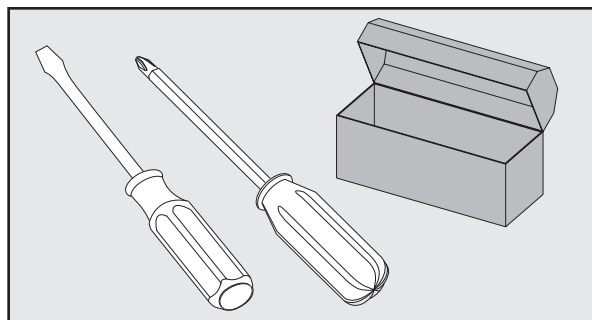
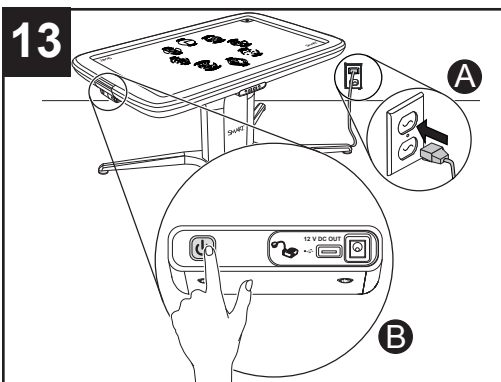
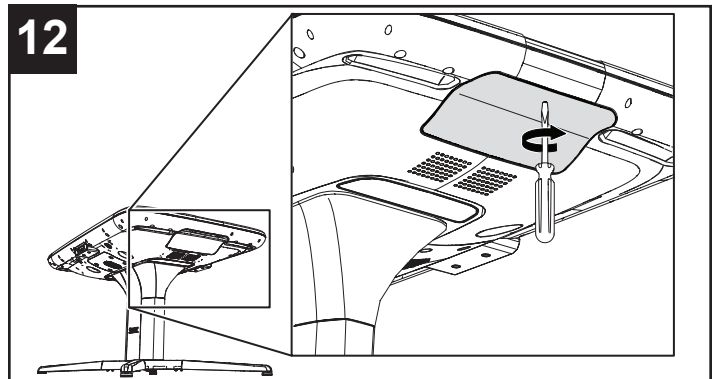
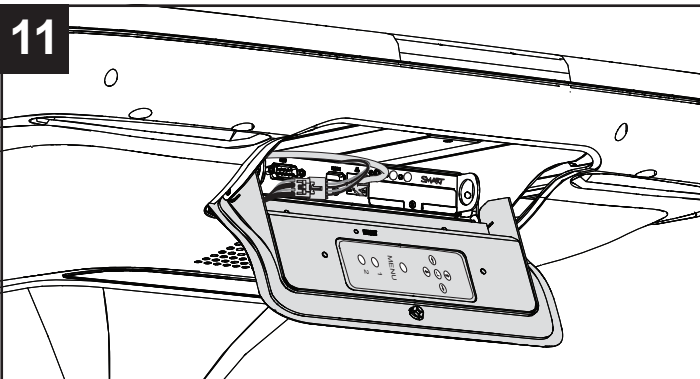
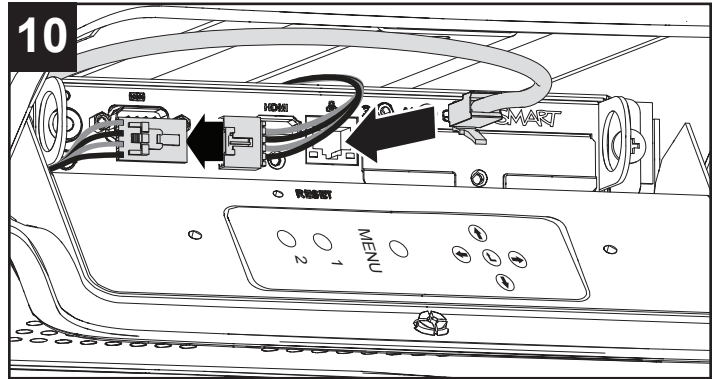
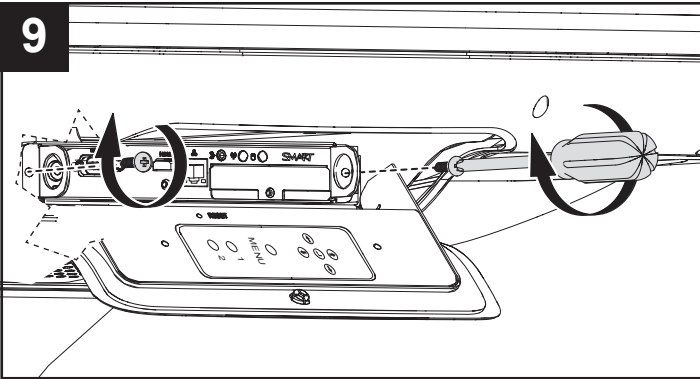
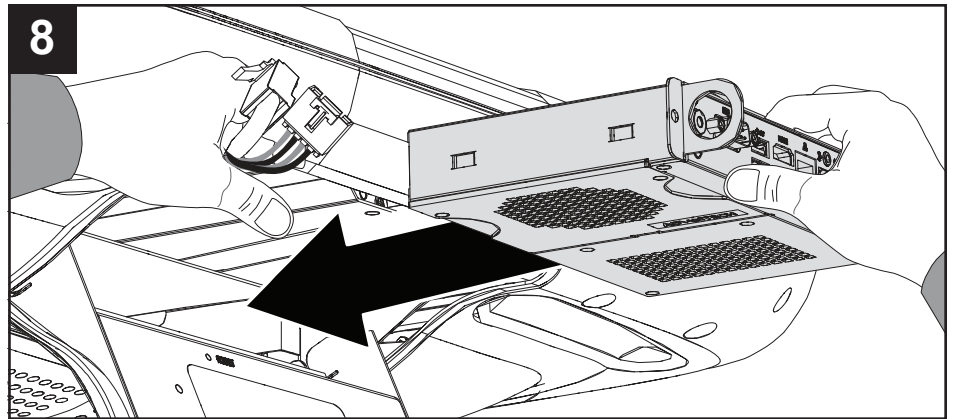
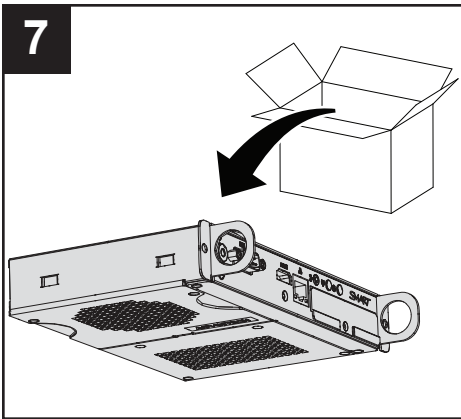


FRU-APPLIANCE-ST442I





Hardware environmental compliance

SMART Technologies supports global efforts to ensure that electronic equipment is manufactured, sold and disposed of in a safe and environmentally friendly manner.



Waste Electrical and Electronic Equipment and Battery regulations (WEEE and Battery Directives)

Electrical and electronic equipment and batteries contain substances that can be harmful to the environment and to human health. The crossed-out wheeled bin symbol indicates that products should be disposed of in the appropriate recycling stream and not as regular waste.

Batteries

Contains BR2032 battery. Recycle or dispose of batteries properly. smarttech.com/kb/170428

Perchlorate Material

Contains perchlorate material. Special handling may apply. See dtsc.ca.gov/hazardouswaste/perchlorate.

See smarttech.com/compliance for more information.



smarttech.com/support
smarttech.com/contactsupport

SMART[®]