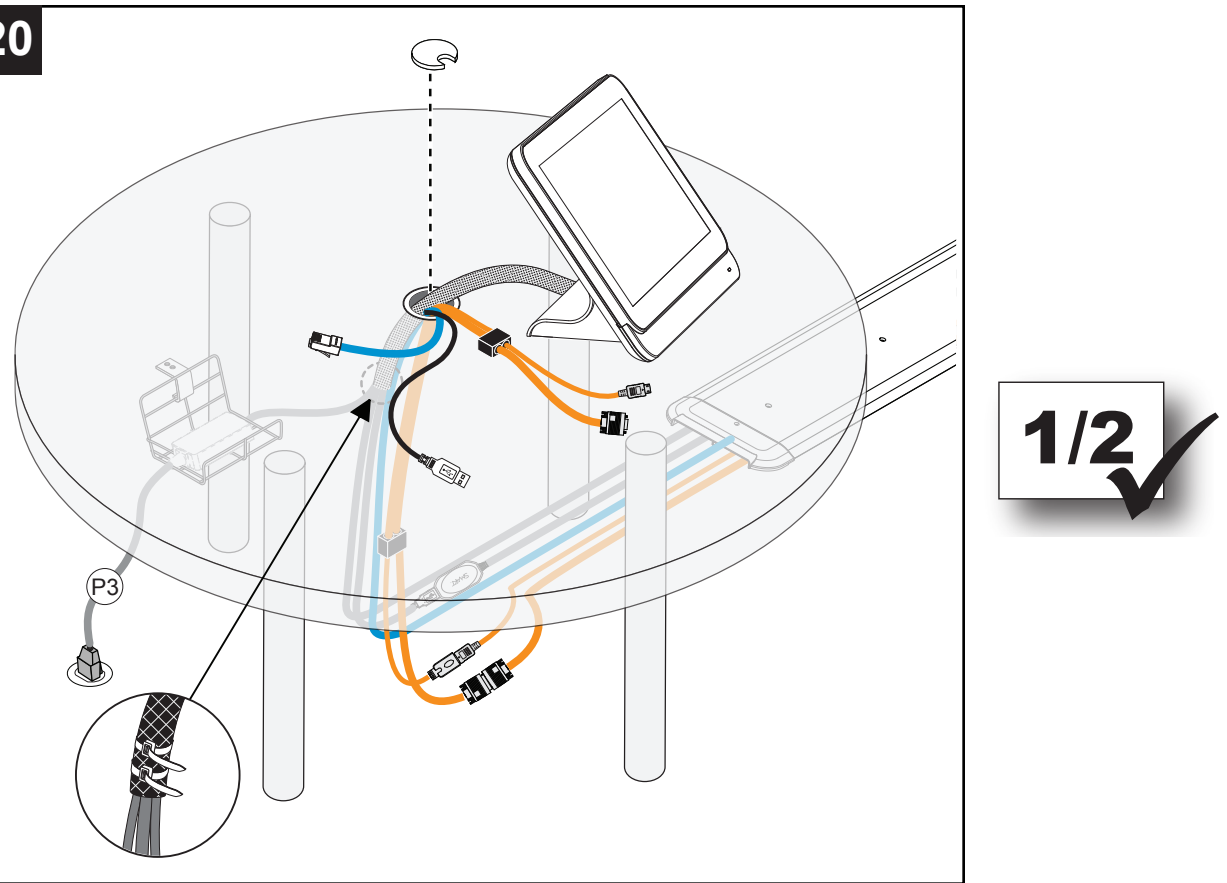
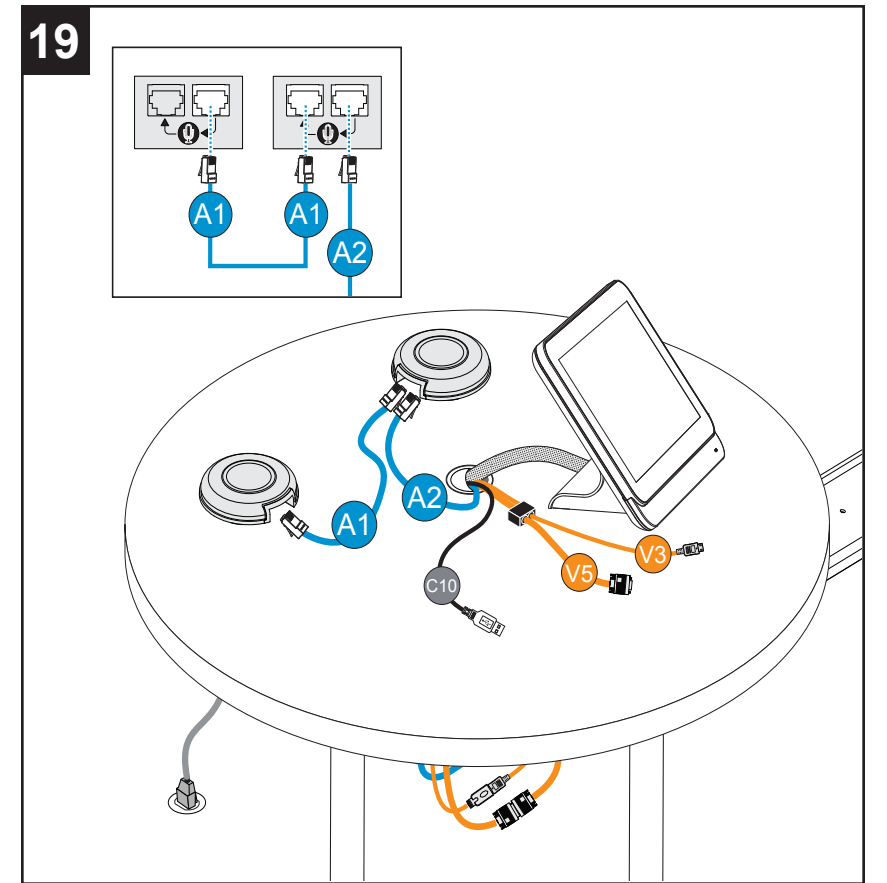
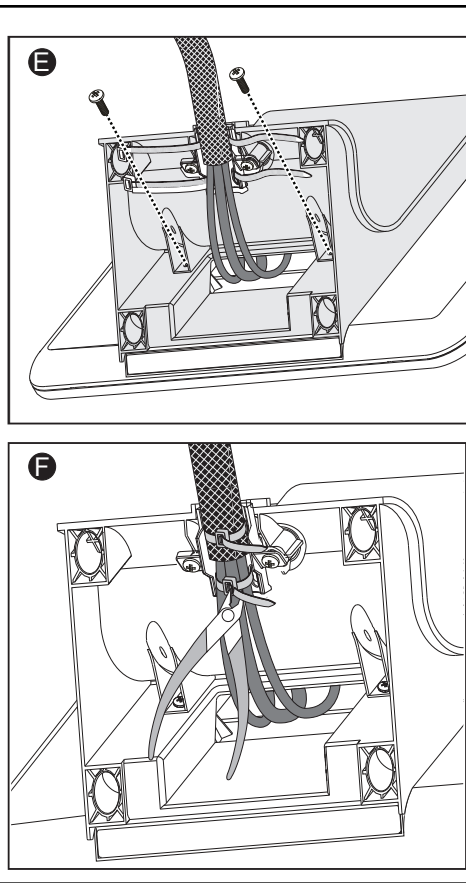
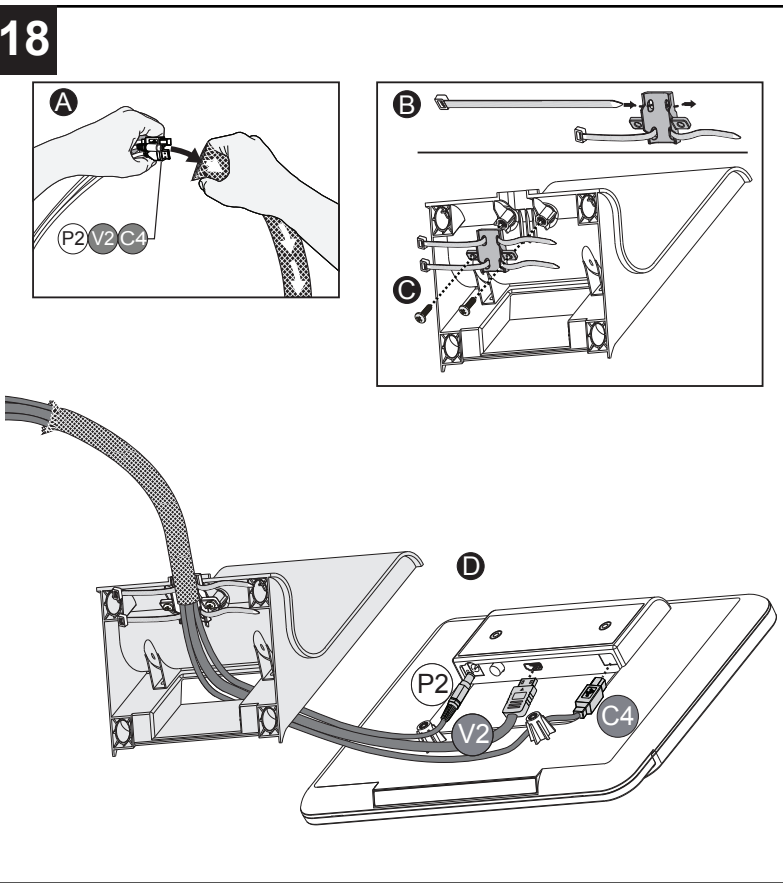
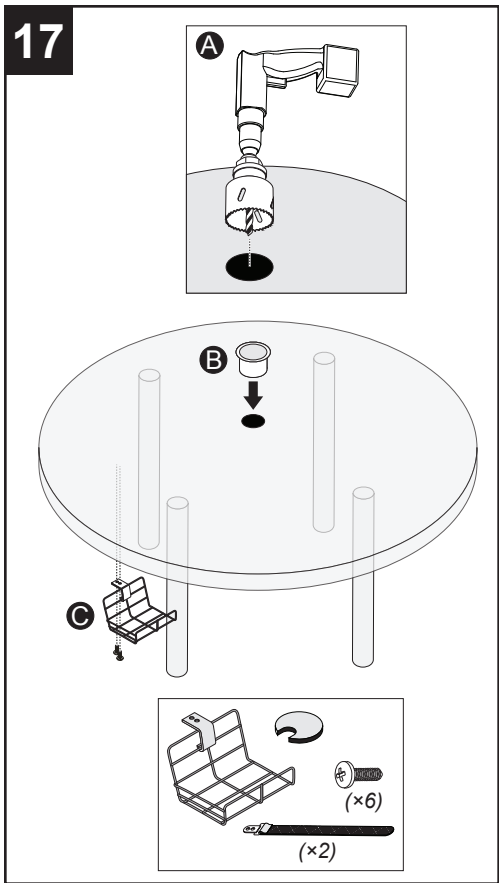
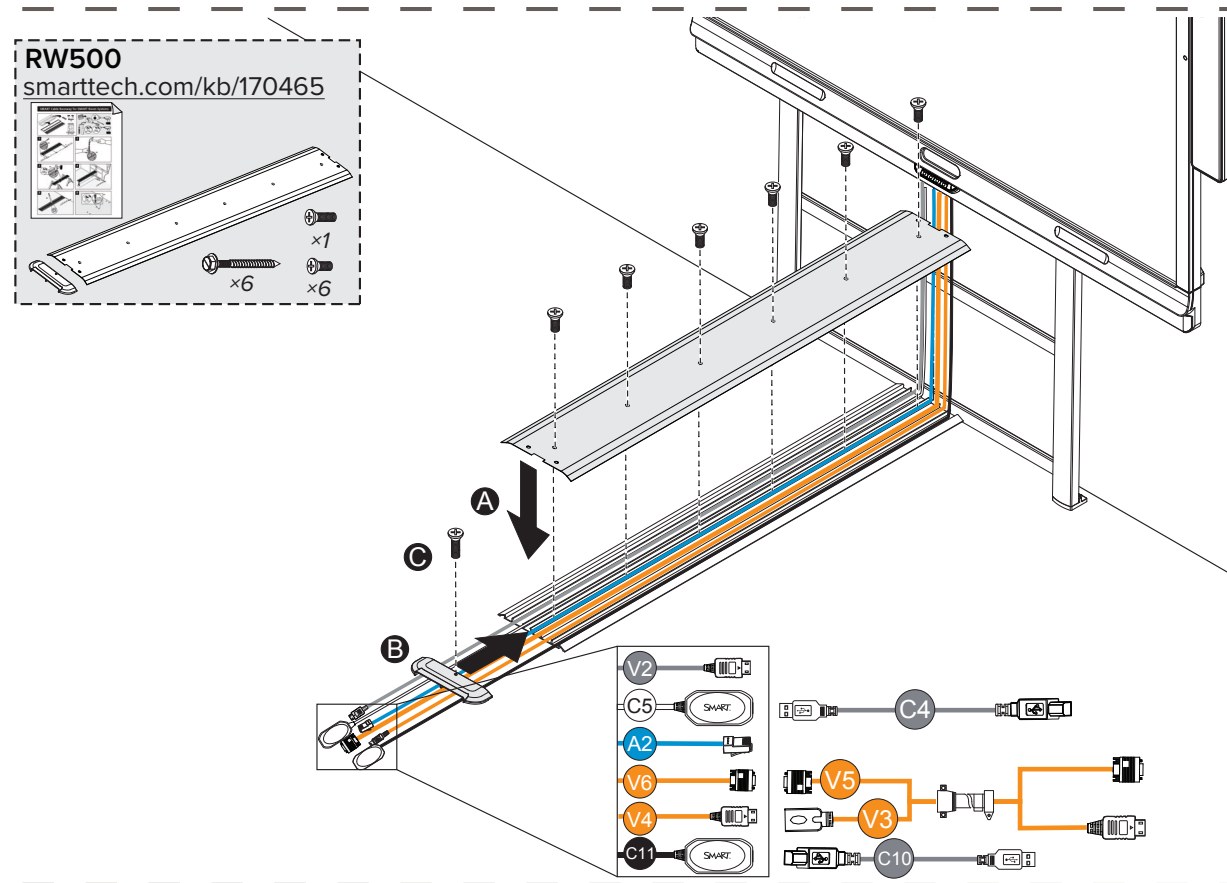
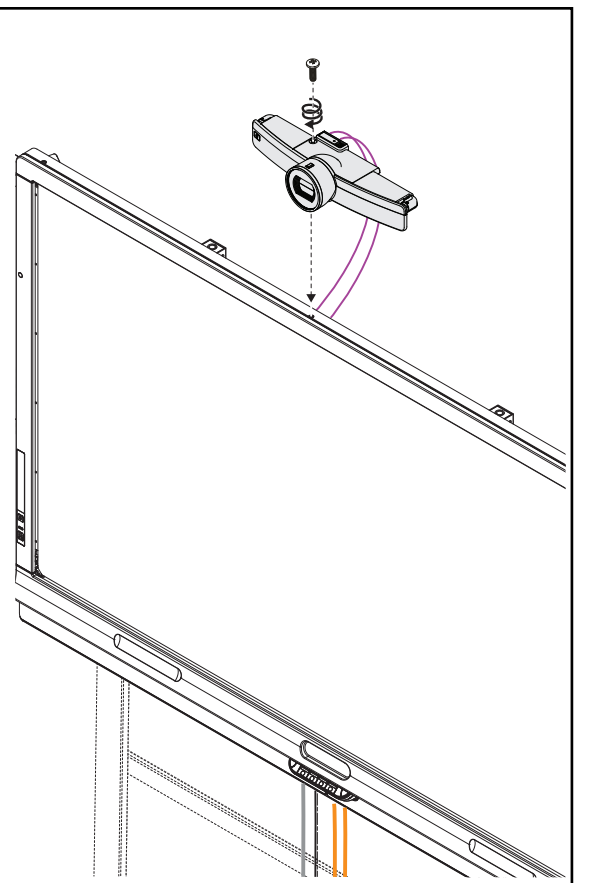
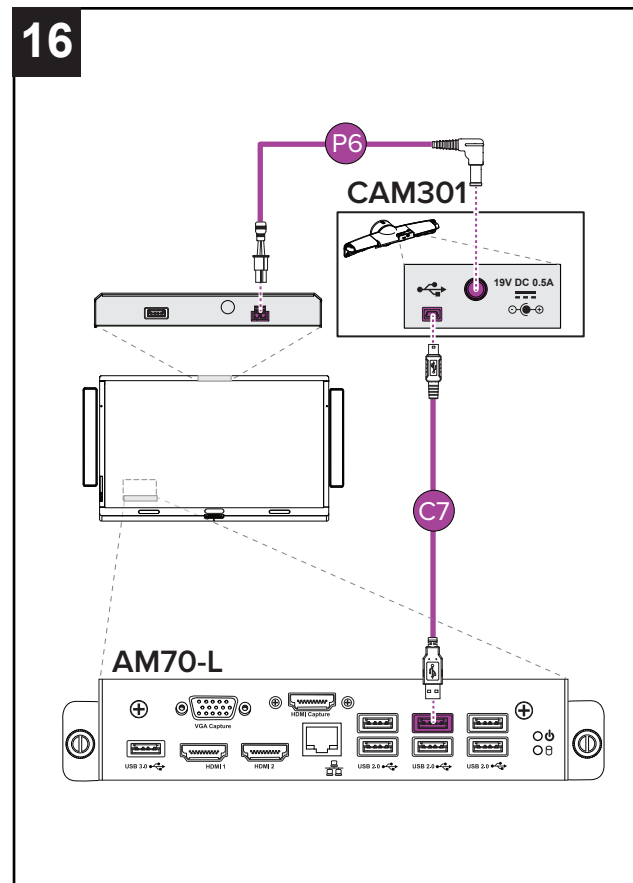
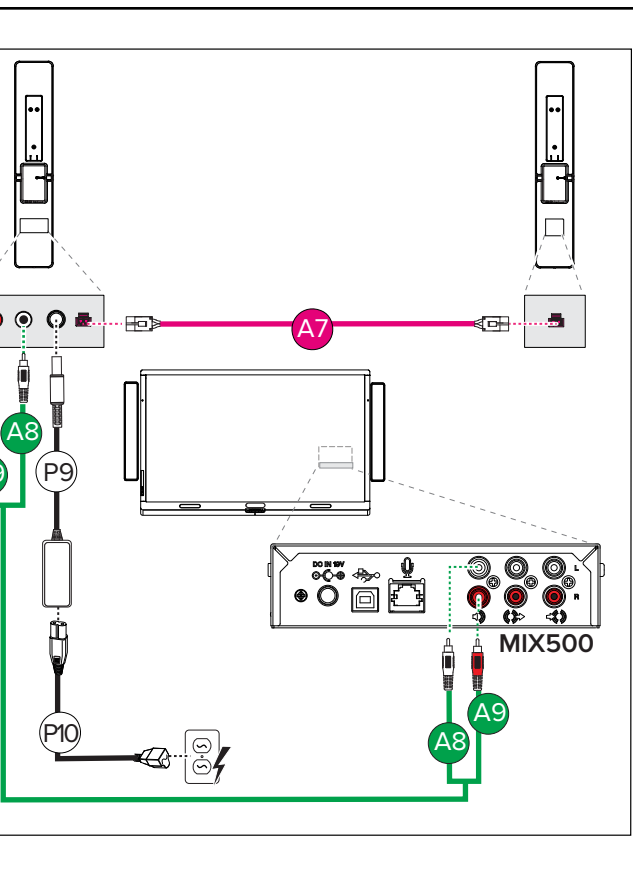
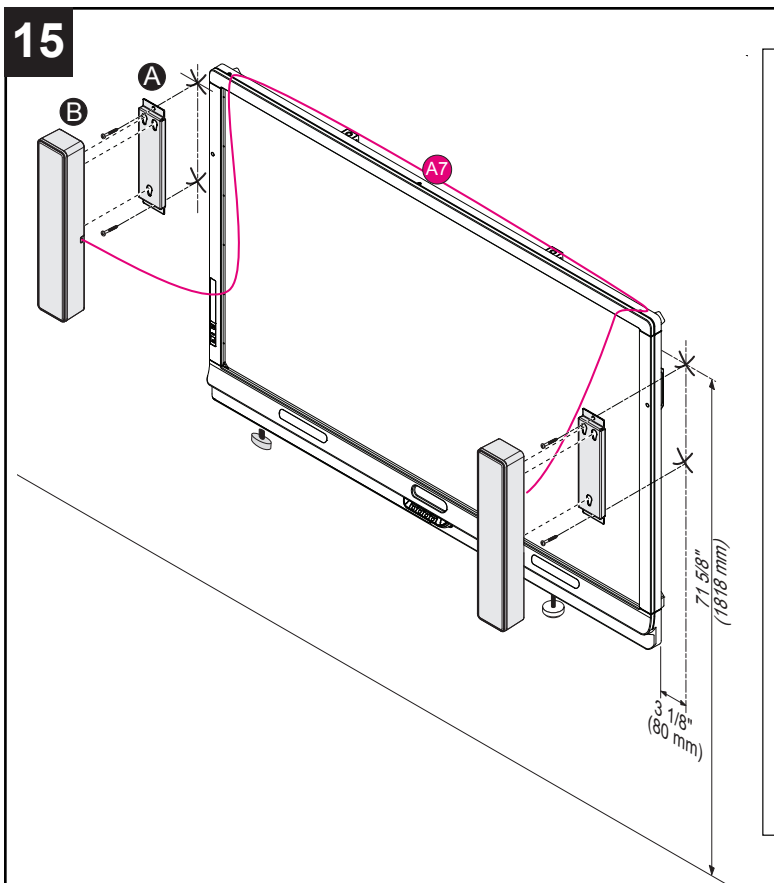
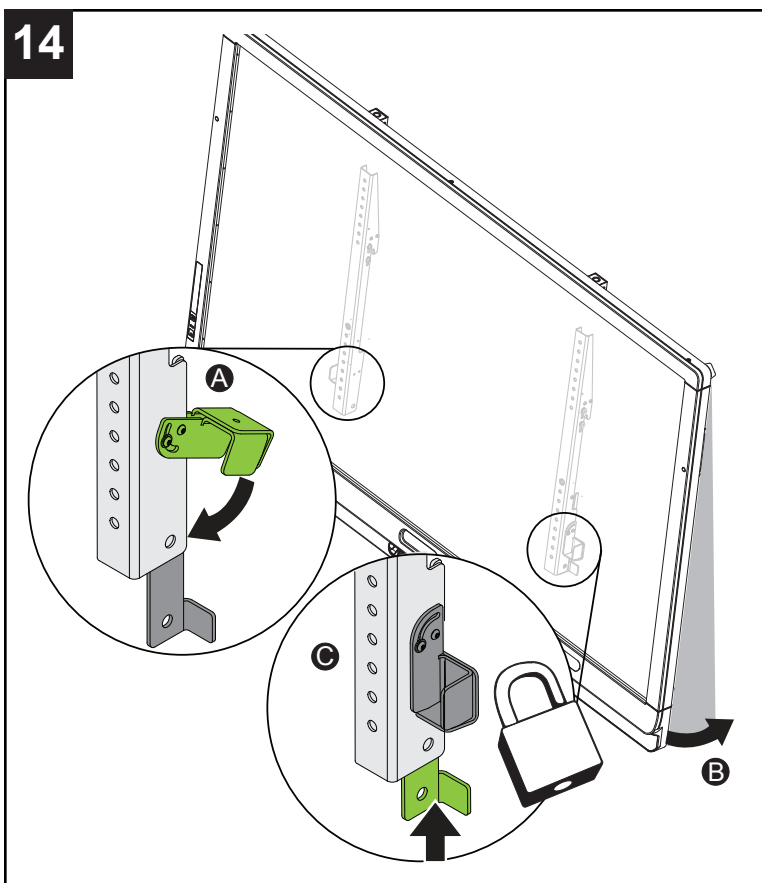
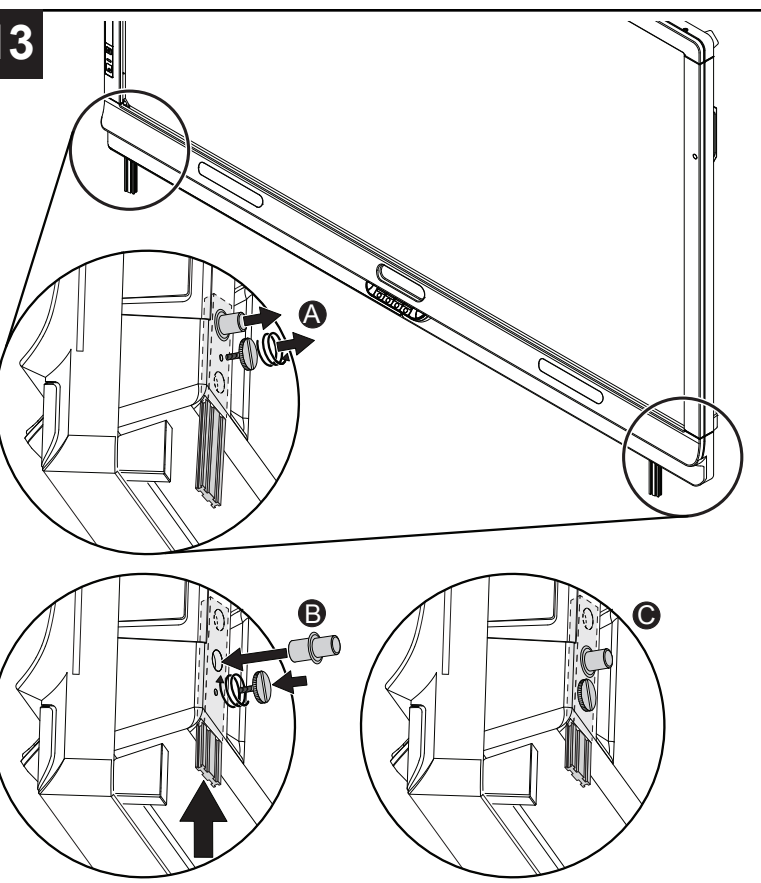
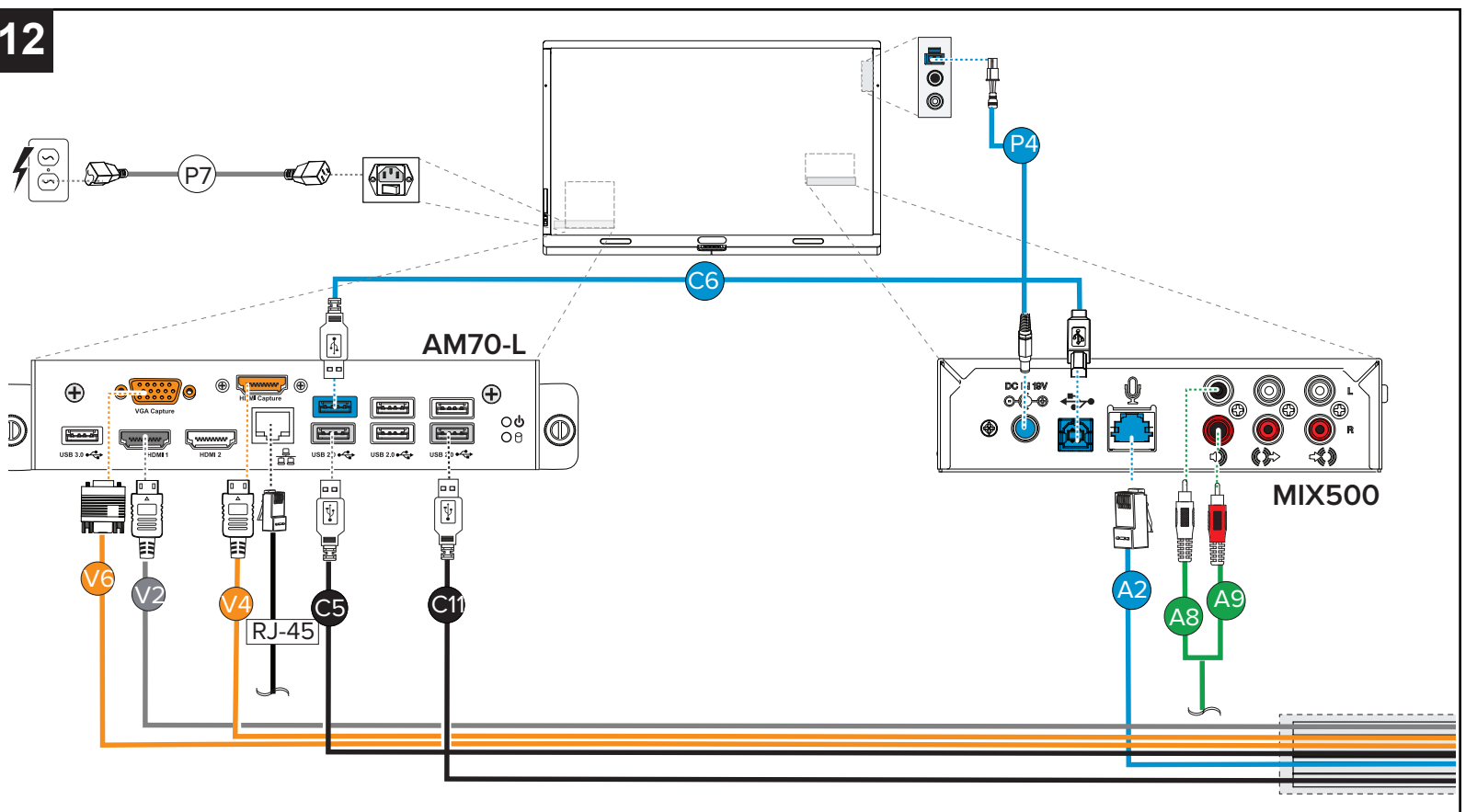
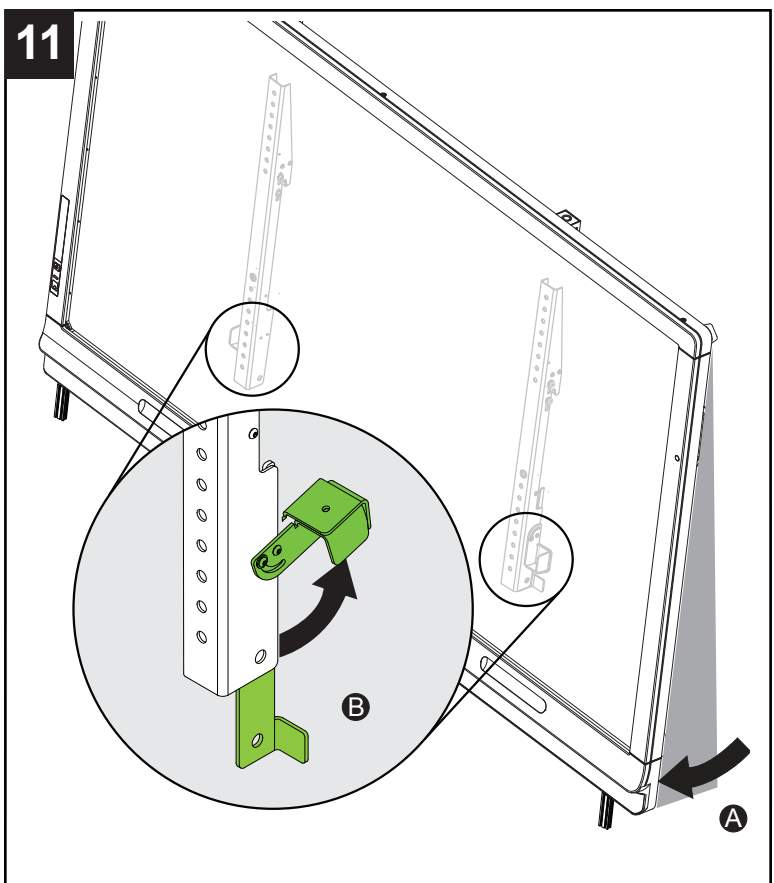
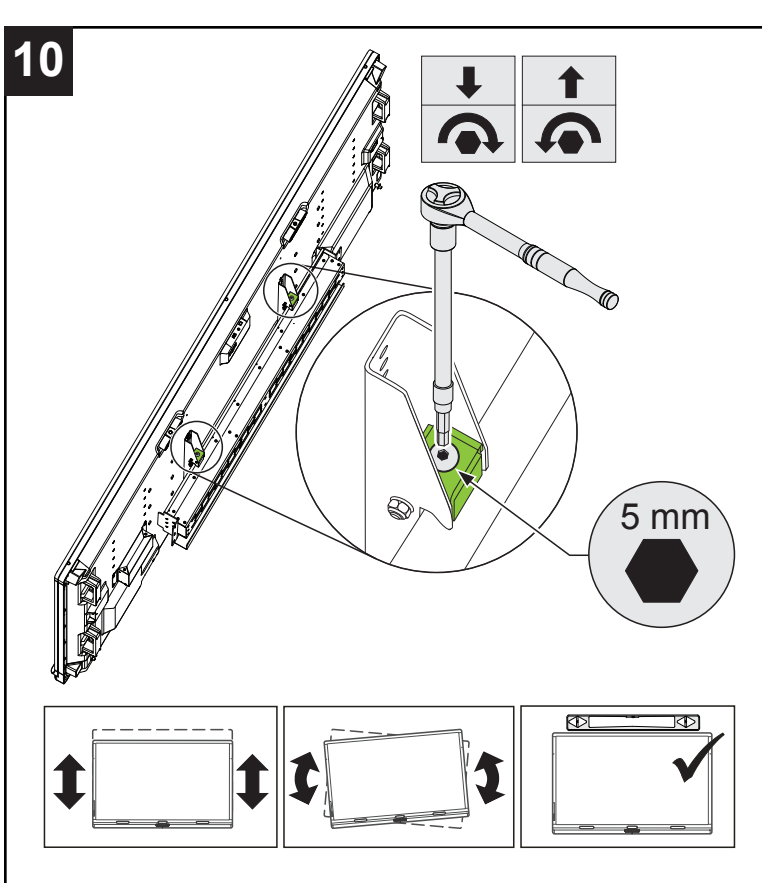
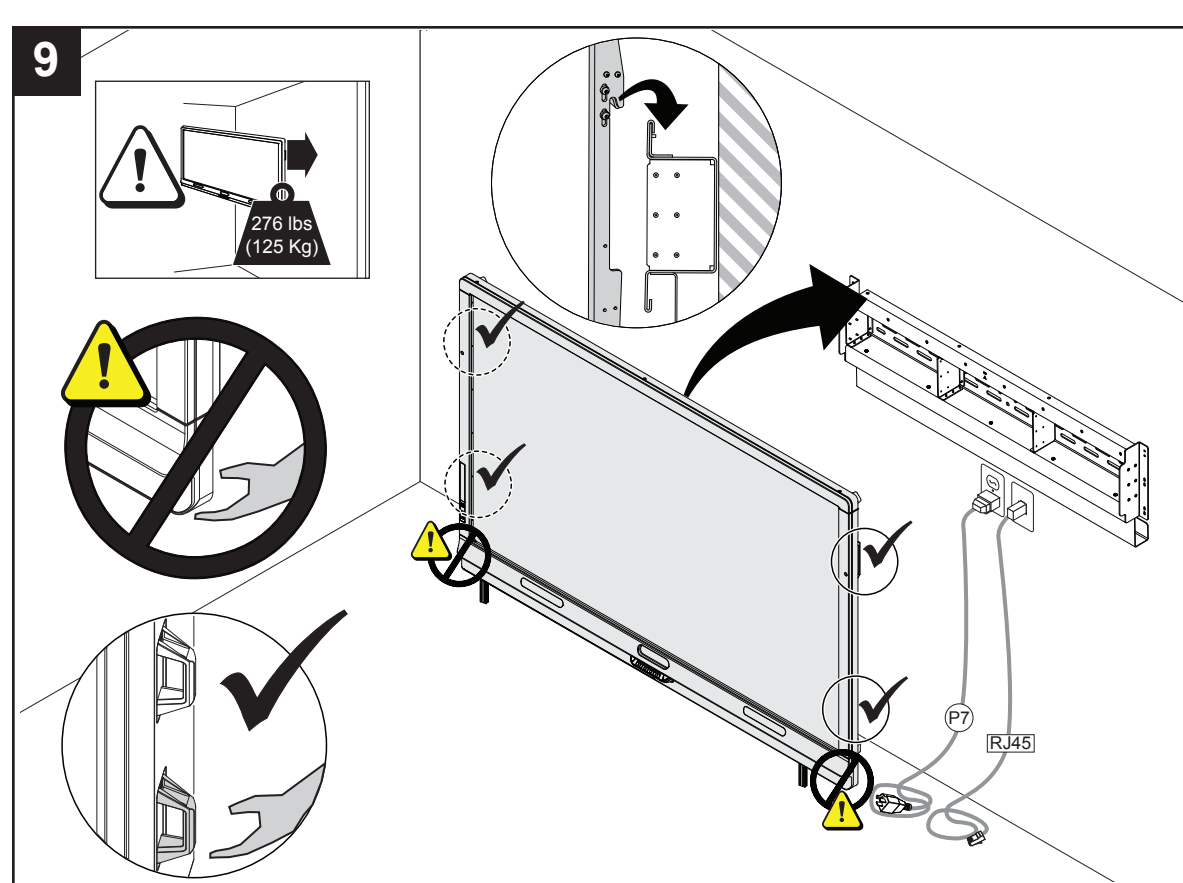
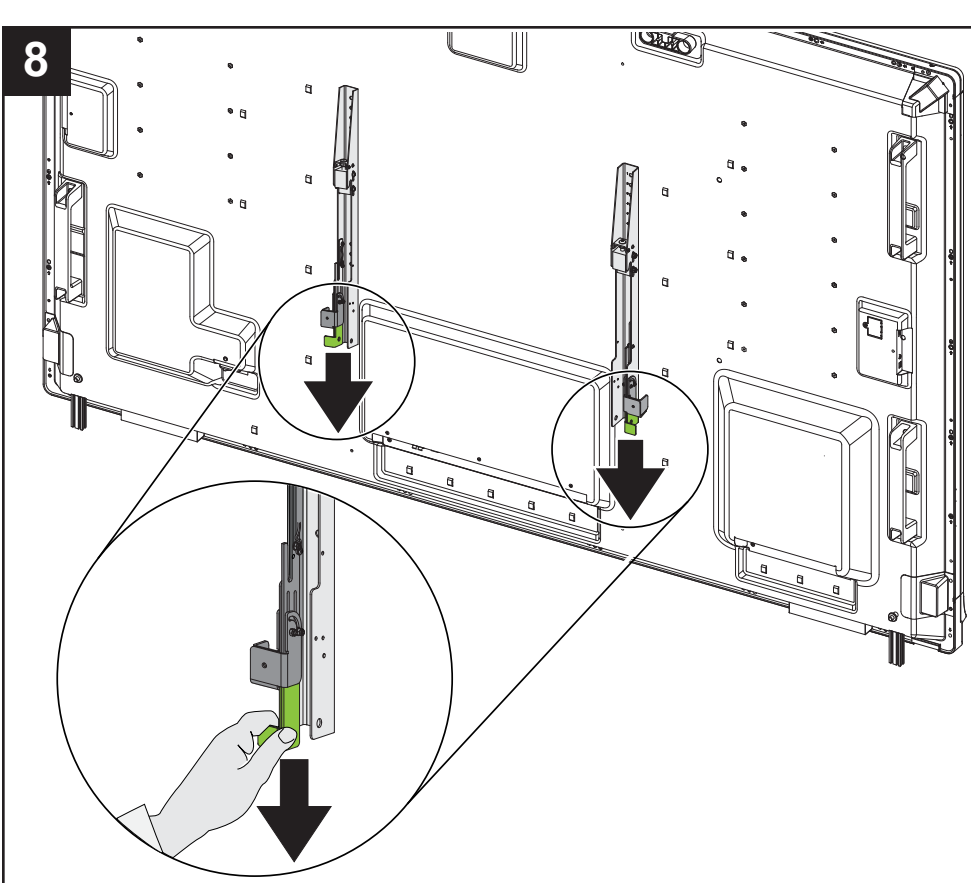
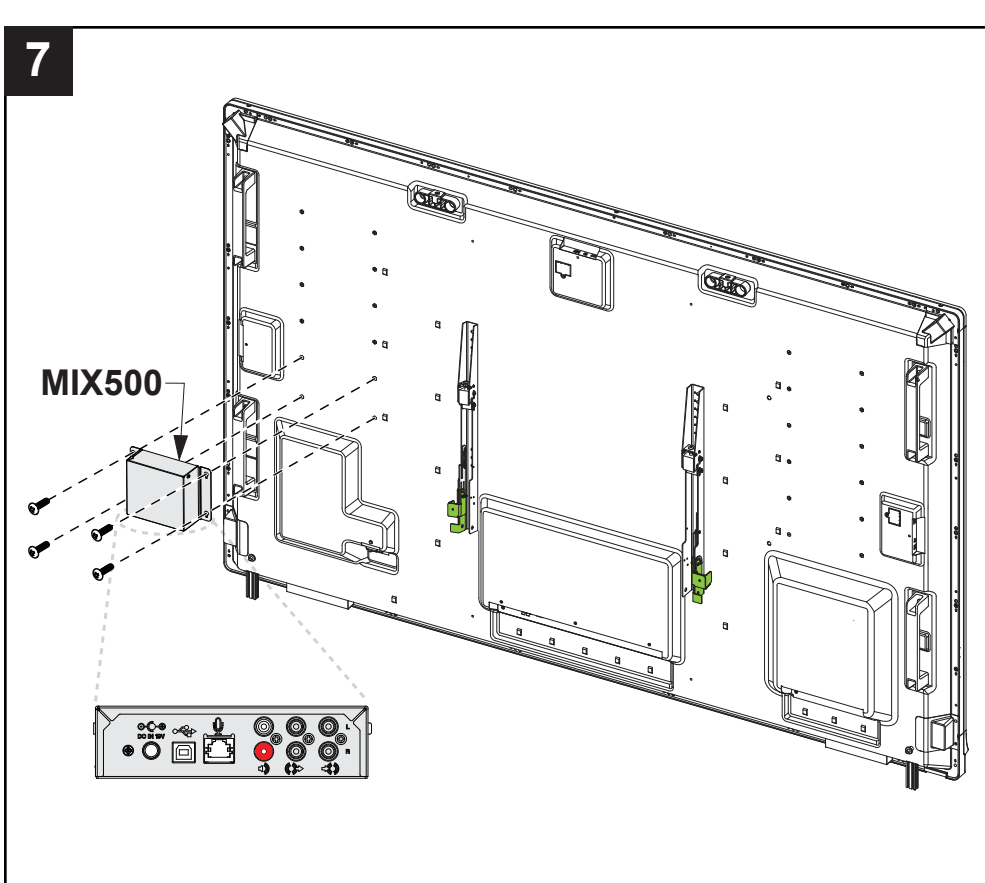
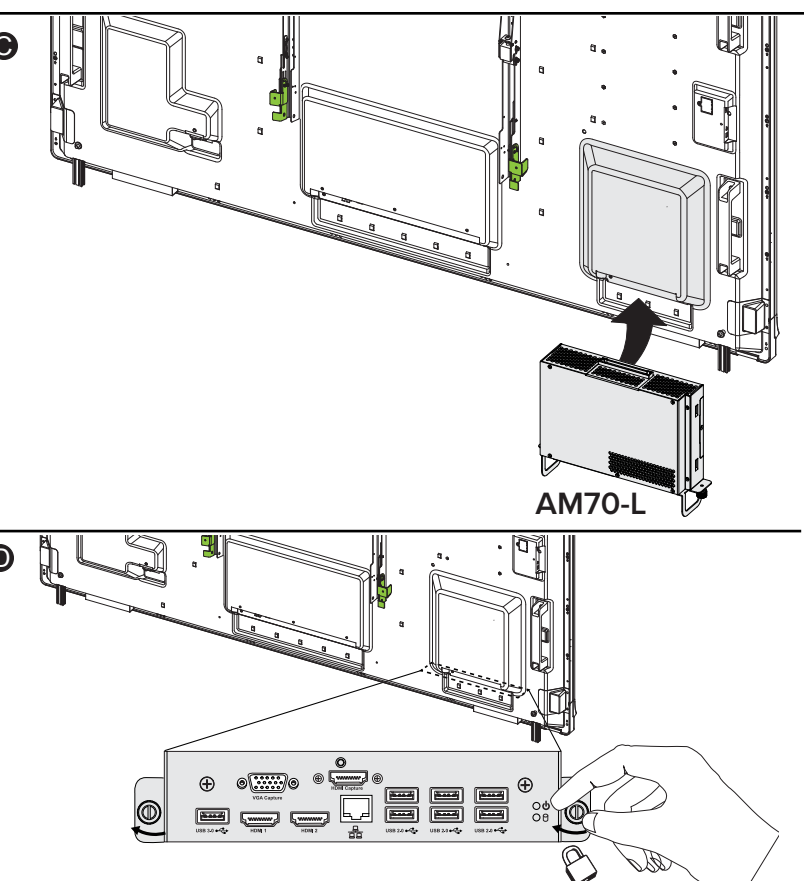
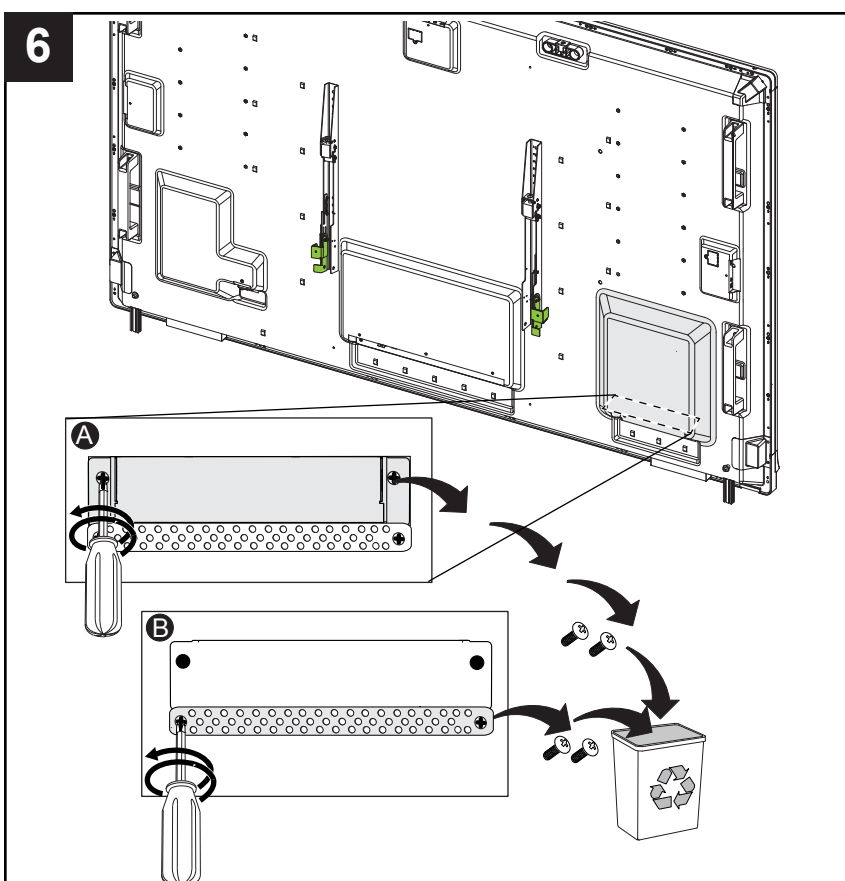
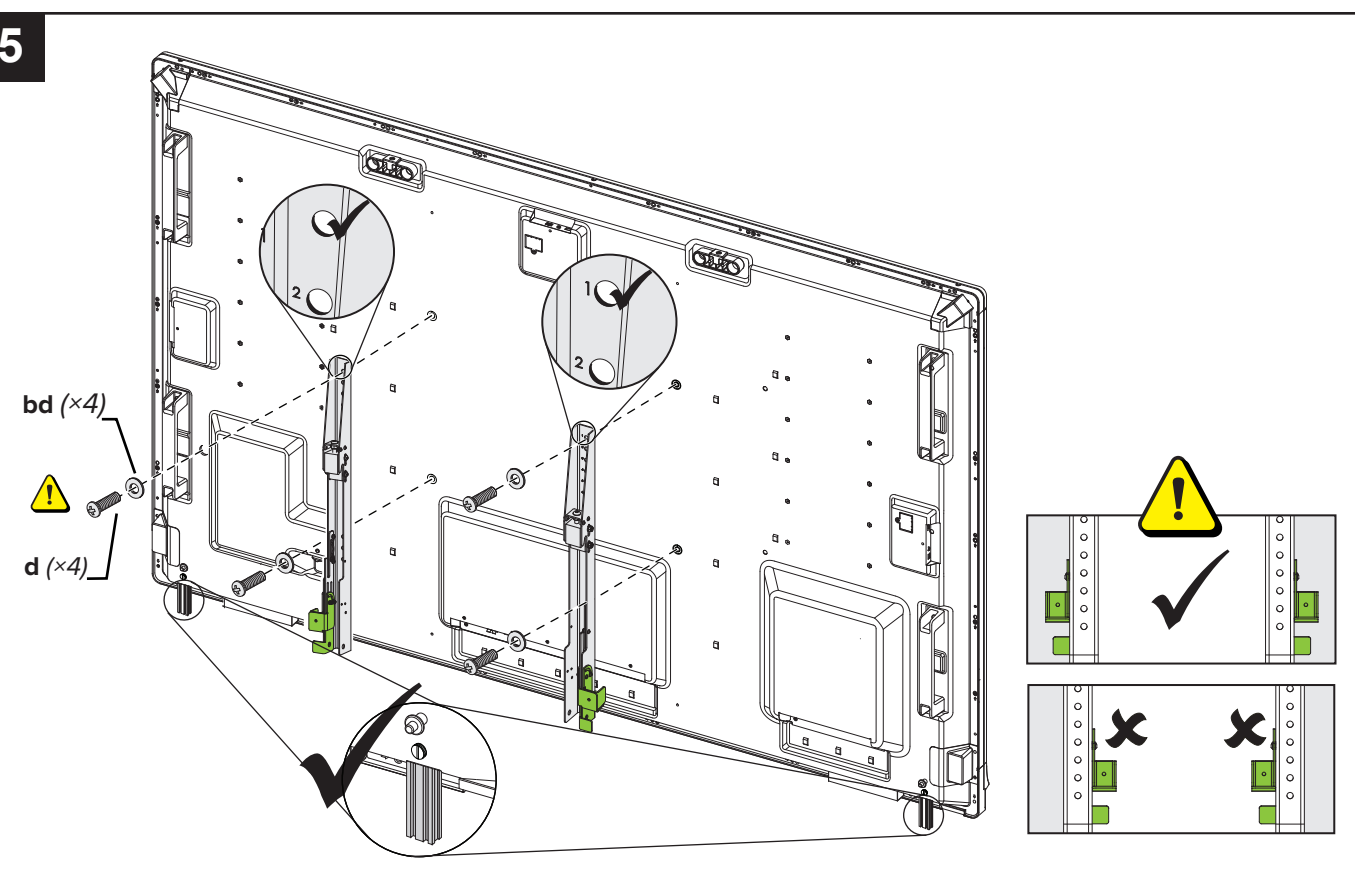
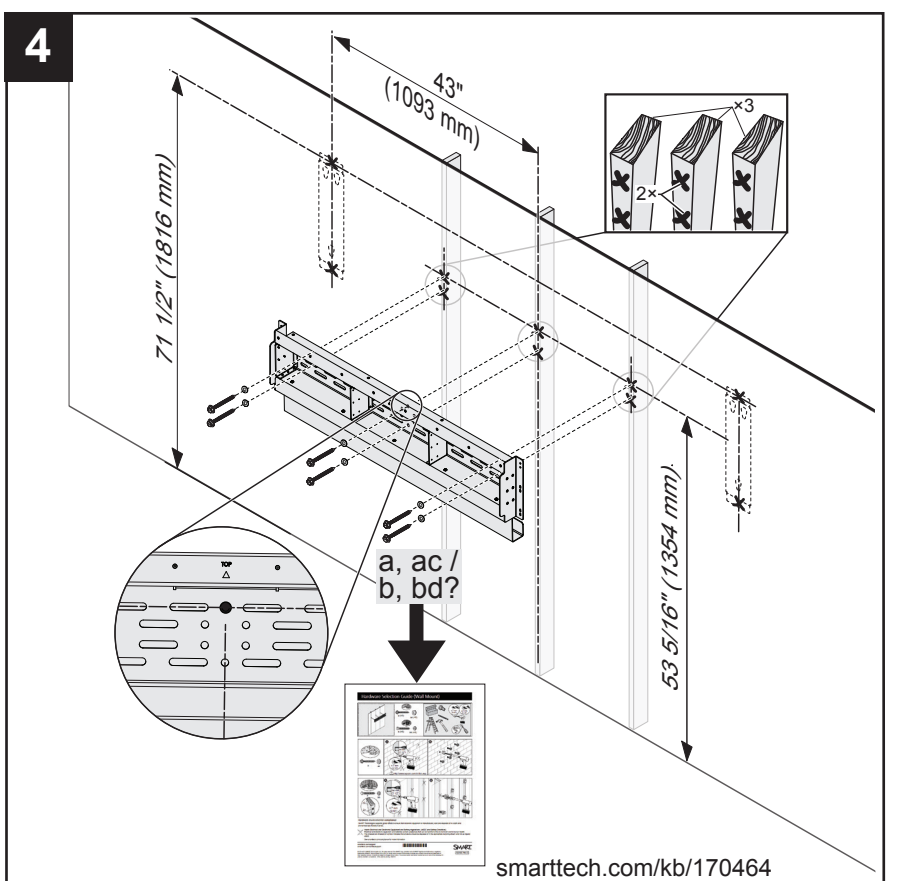
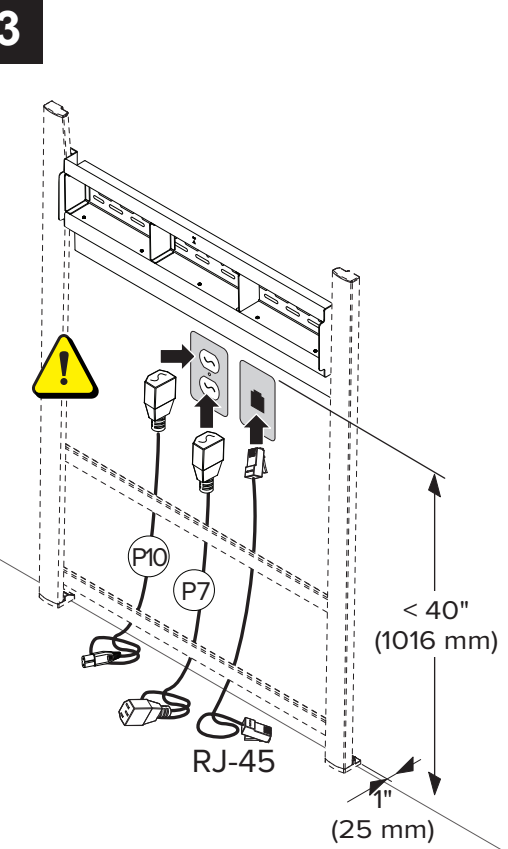
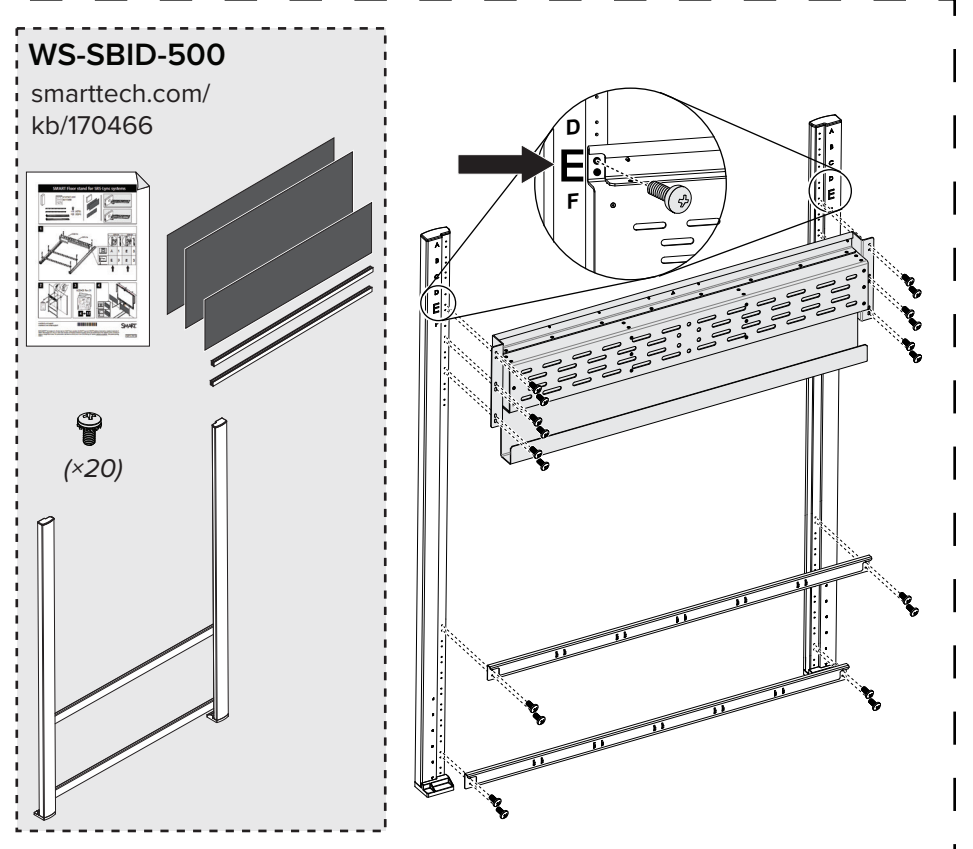
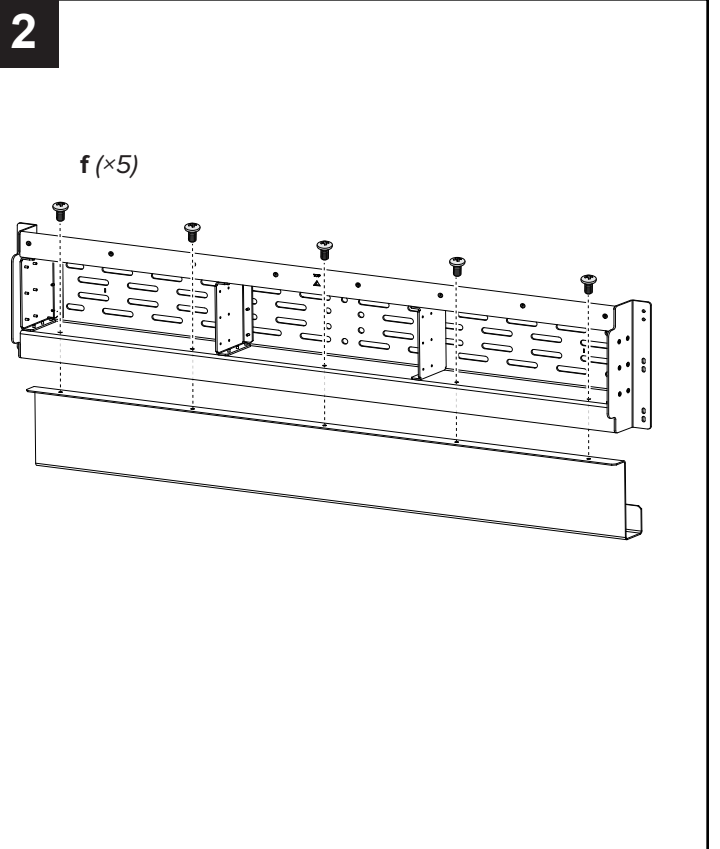
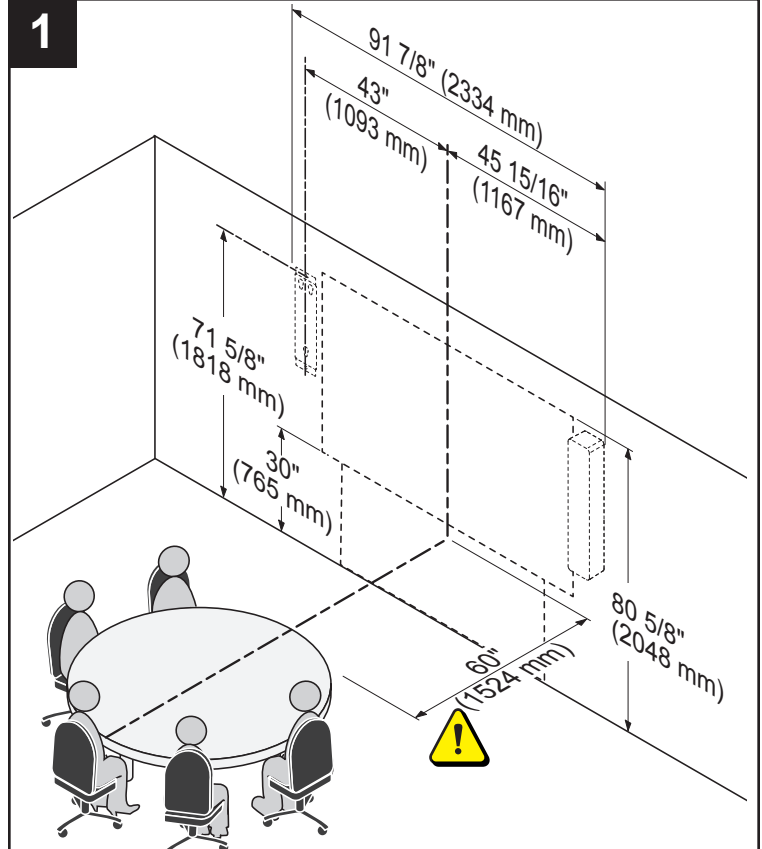
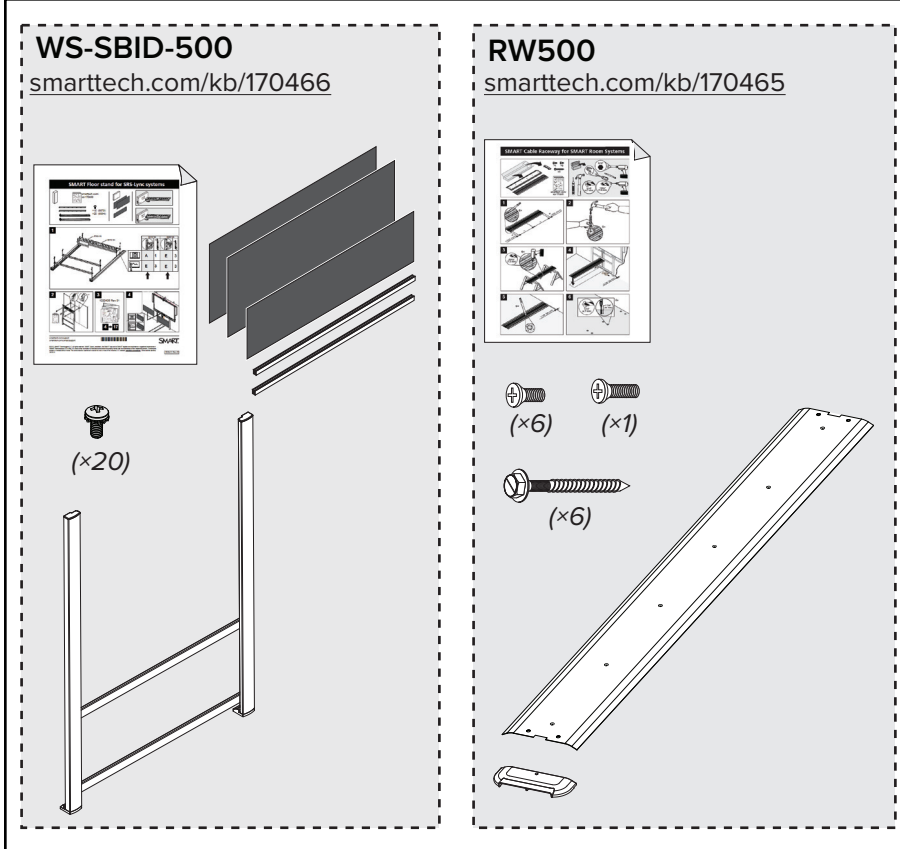
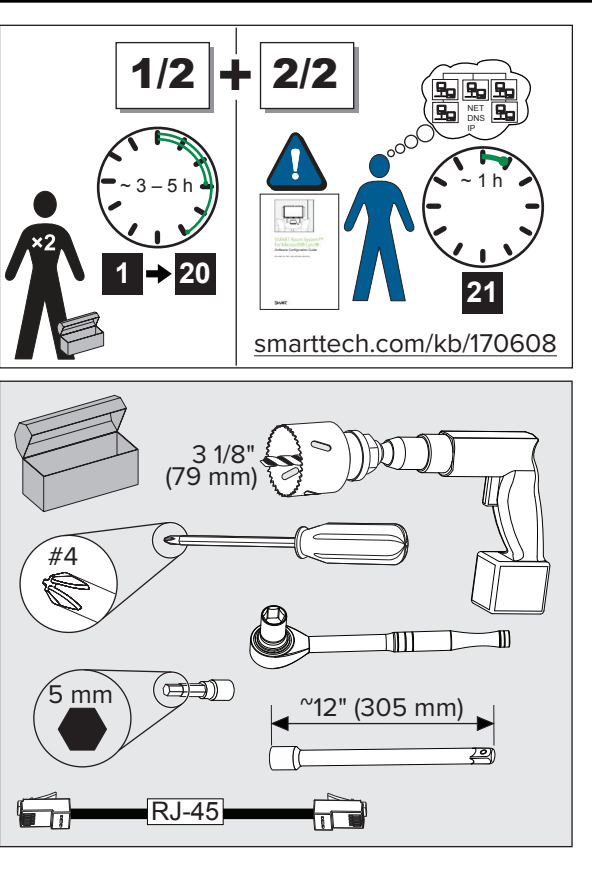
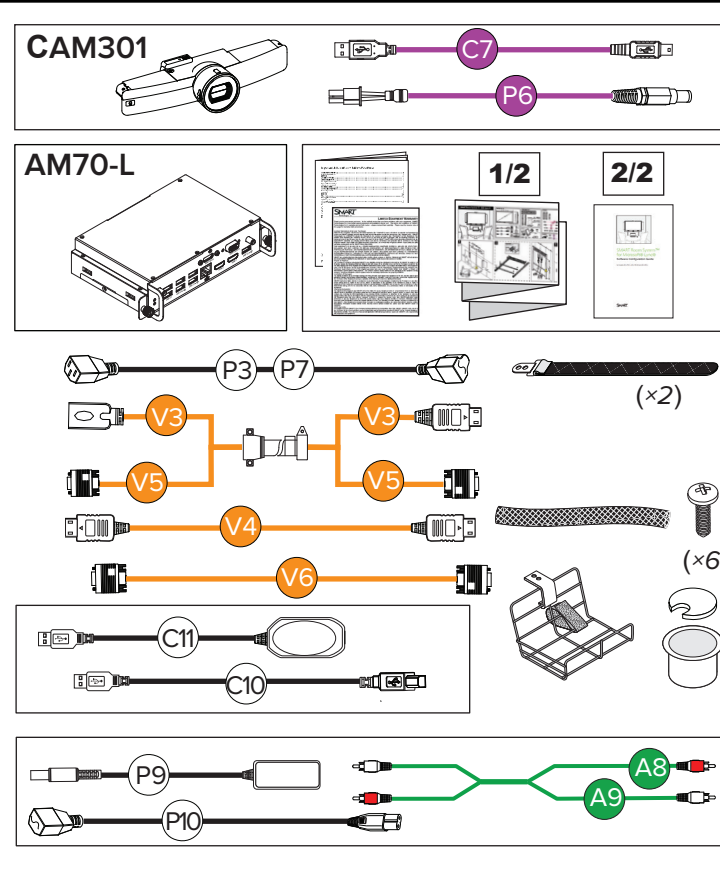
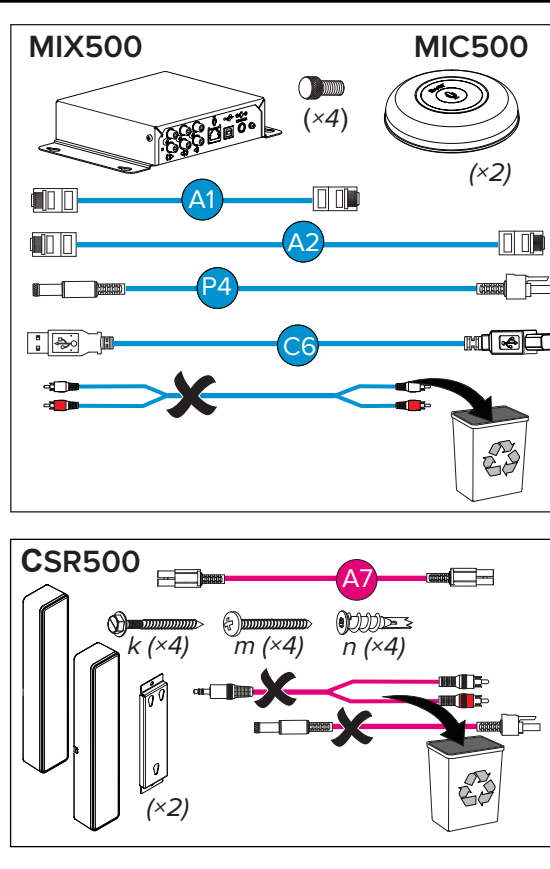
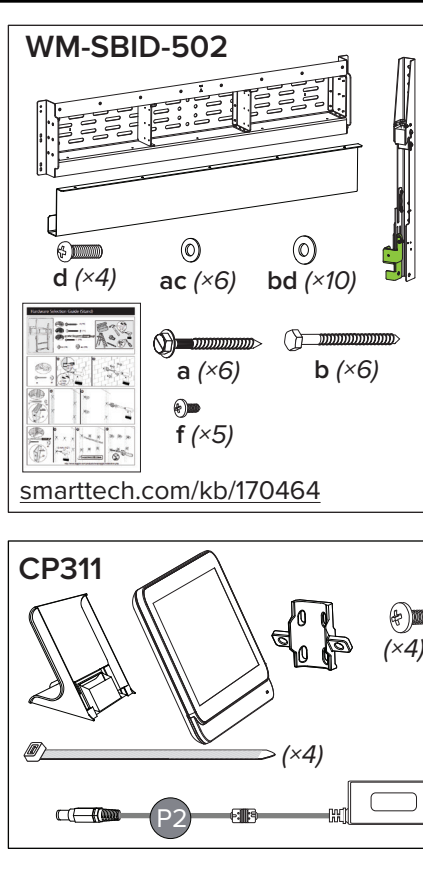
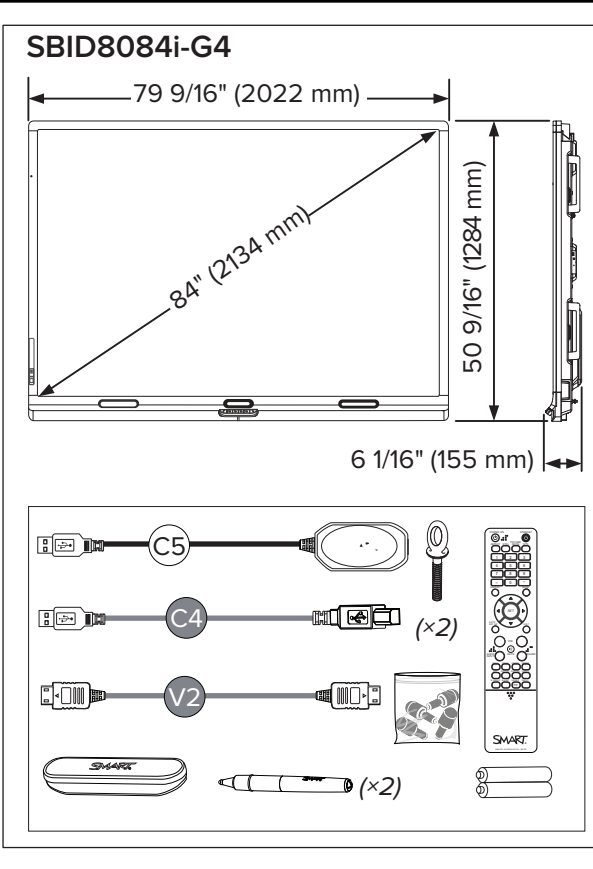
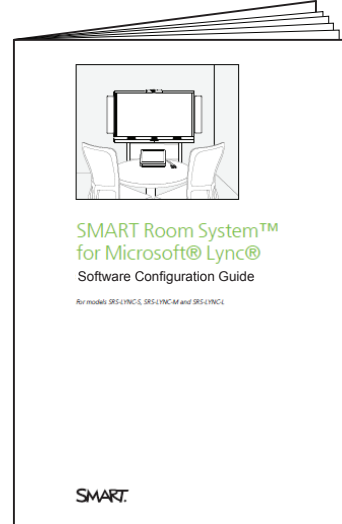
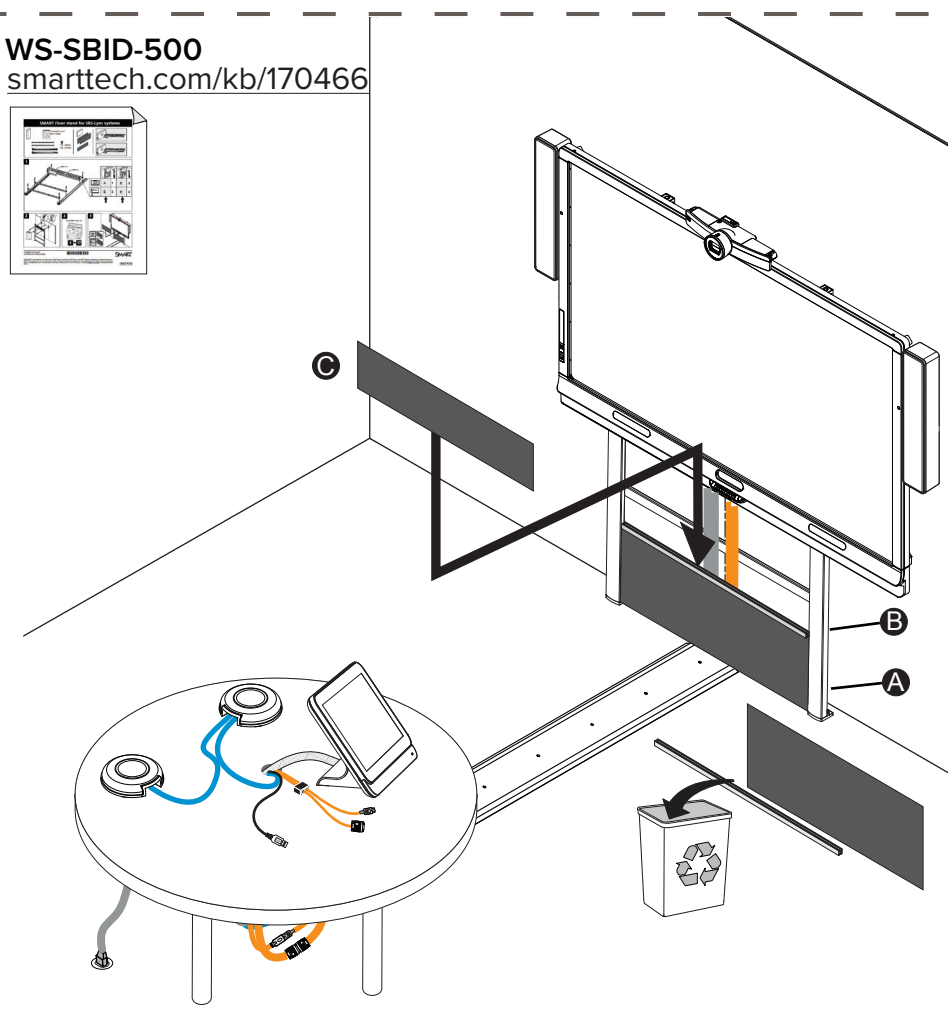
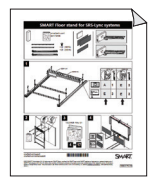
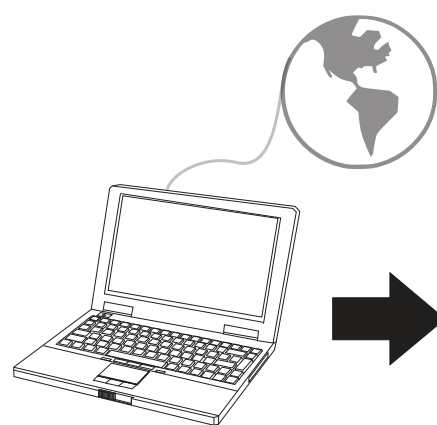
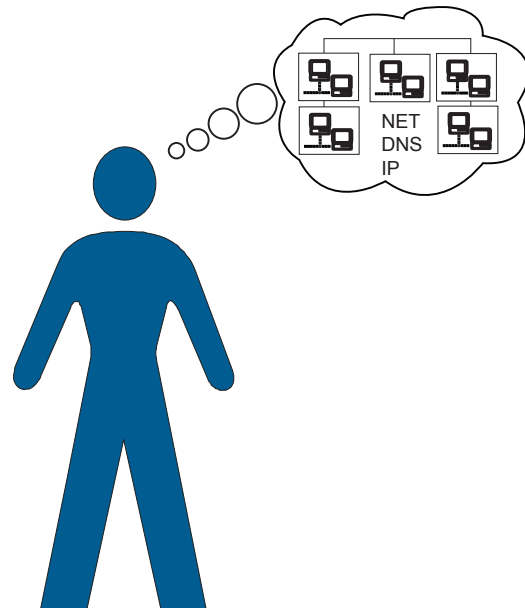


## A line drawing of a whiteboard on a stand with two vertical side panels. In front of the whiteboard is a round table with a tablet on it. Two keys are lying on the table next to the tablet. There are also two circular objects, possibly coasters, on the table.

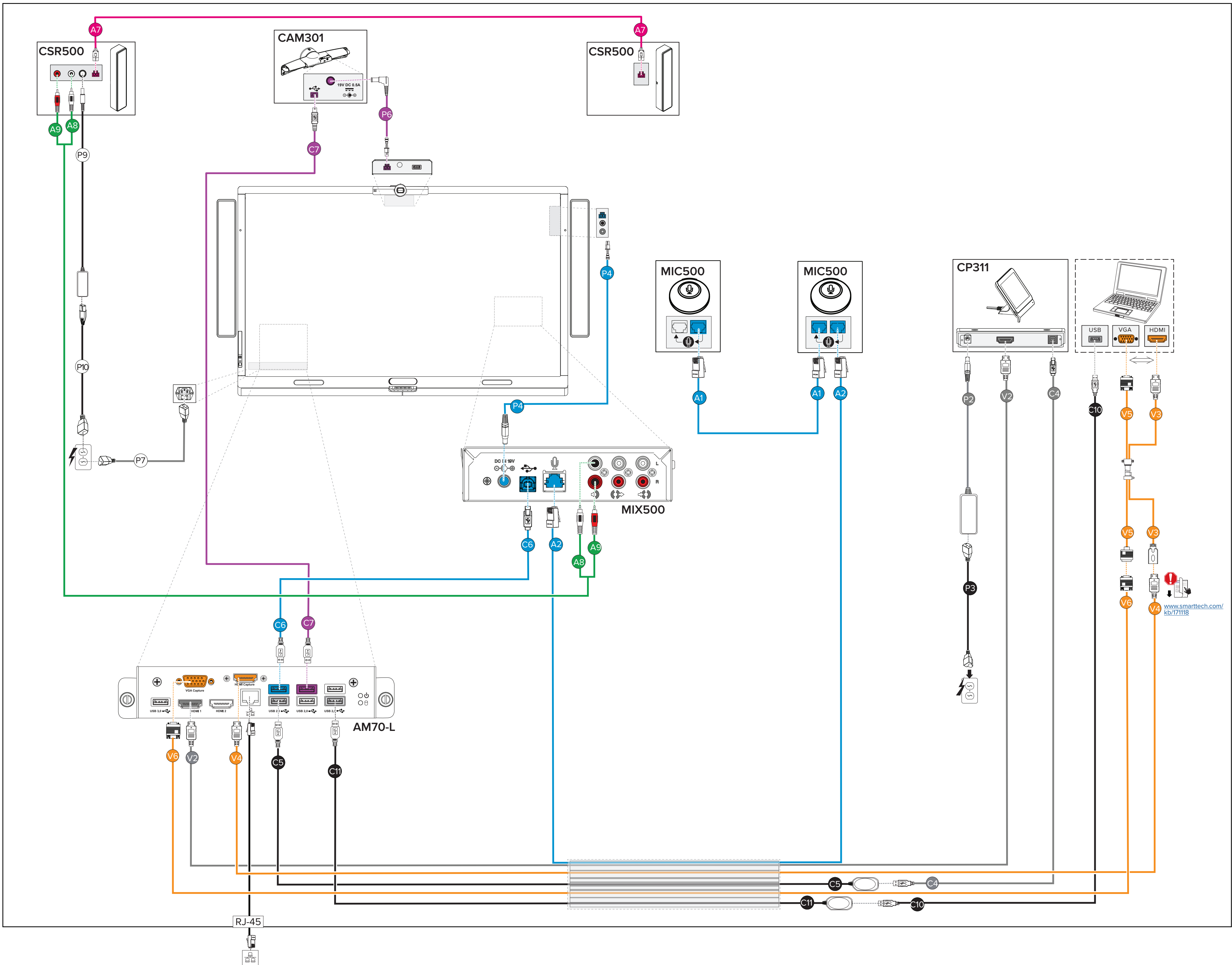




smarttech.com/kb/170608



smarttech.com/kb/170450



#### Hardware environmental compliance

SMART Technologies supports global efforts to ensure that electronic equipment is manufactured, sold and disposed of in a safe and environmentally friendly manner.

**Waste Electrical and Electronic Equipment and Battery regulations (WEEE and Battery Directives)**  
Electrical and electronic equipment and batteries contain substances that can be harmful to the environment and to human health.  
The crossed-out wheeled bin symbol indicates that products should be disposed of in the appropriate recycling stream and not as regular waste.

**Batteries**  
The remote contains two AAA alkaline batteries. Recycle or dispose of batteries properly.

See [smarttech.com/compliance](http://smarttech.com/compliance) for more information.

危险材料表 (Hazardous Materials Table)

根据SJ/T11364的规定, 请访问 [smarttech.com/compliance](http://smarttech.com/compliance) 查阅本产品有害物质表。

In accordance with the provisions of SJ/T 11364, please visit [smarttech.com/compliance](http://smarttech.com/compliance) for this product hazardous materials table.



[smarttech.com/support](http://smarttech.com/support)  
[smarttech.com/contactsupport](http://smarttech.com/contactsupport)

**SMART**  
1020406 Rev 07

© 2013–2016 SMART Technologies ULC. All rights reserved. SMART Board, smarttech, the SMART logo and all SMART taglines are trademarks or registered trademarks of SMART Technologies ULC in the U.S. and/or other countries. All third-party products and company names may be trademarks of their respective owners. Contents are subject to change without notice. This product and/or use thereof covered by one or more of the following U.S. patents: [smarttech.com/patents](http://smarttech.com/patents). Other patents pending. 09/2016.

[smarttech.com/kb/170467](http://smarttech.com/kb/170467)