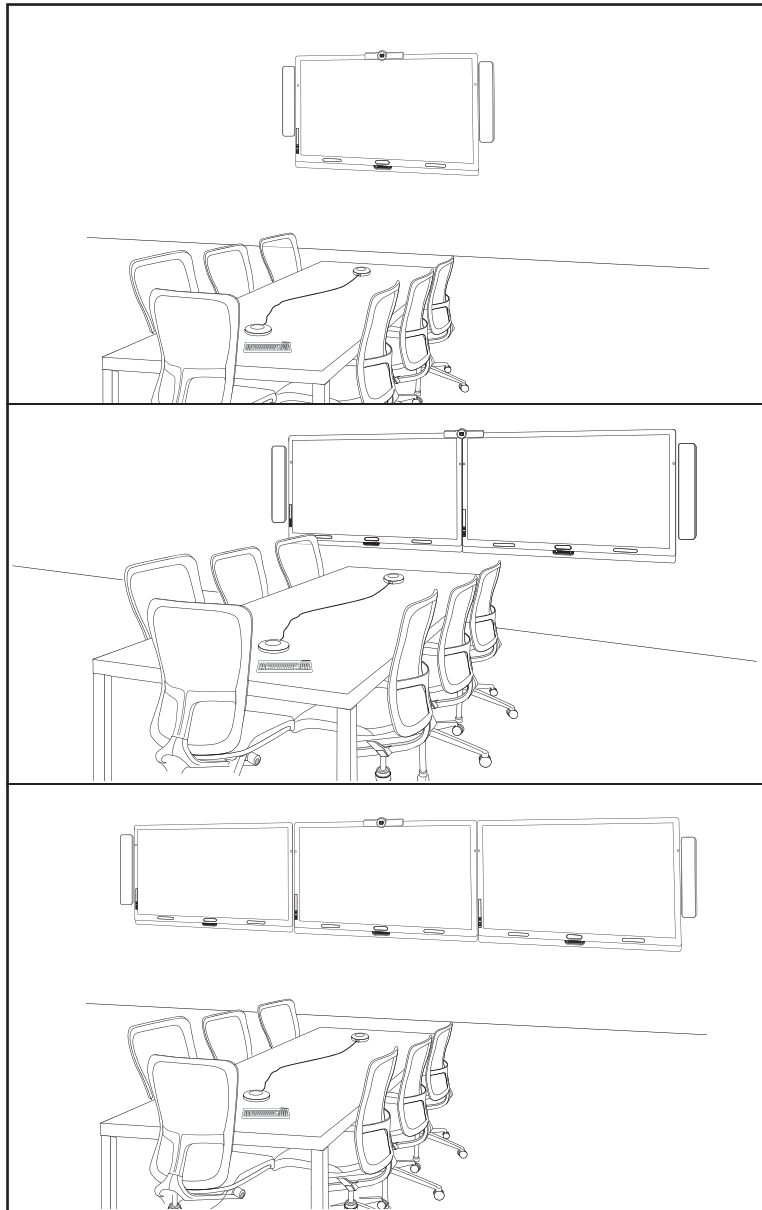


# SMART Room System

SRS-MP-170

SRS-MP-270

SRS-MP-370



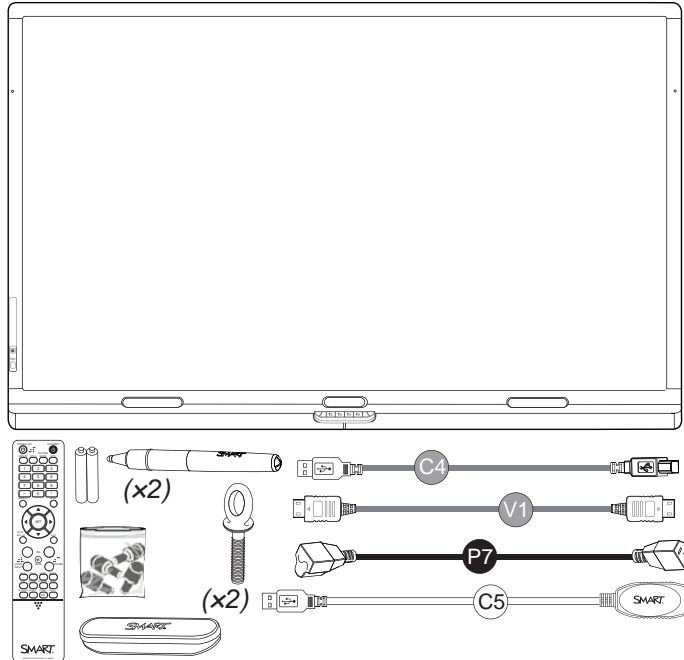
---

**SMART**<sup>®</sup>

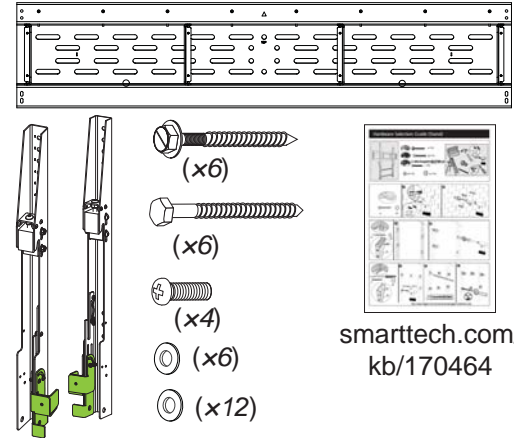
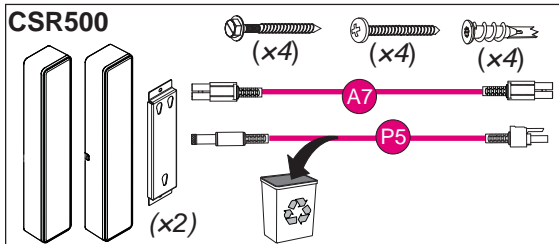
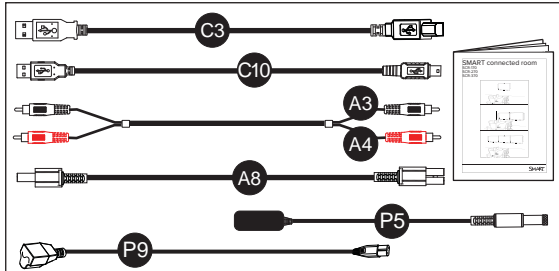
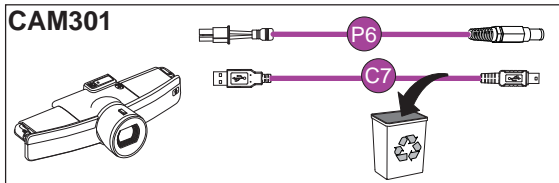
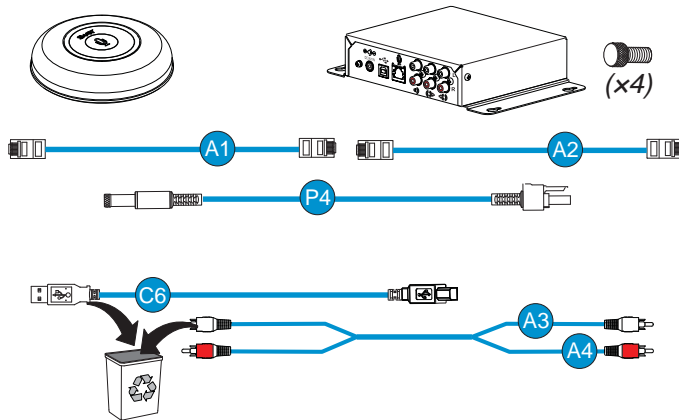
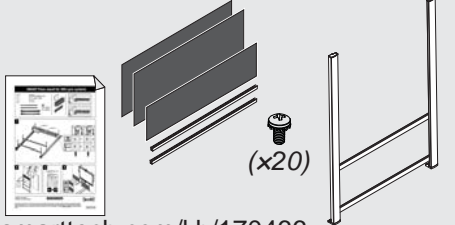
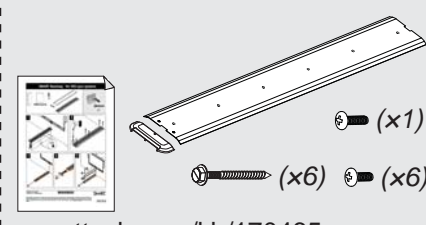
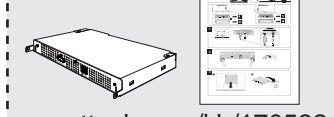


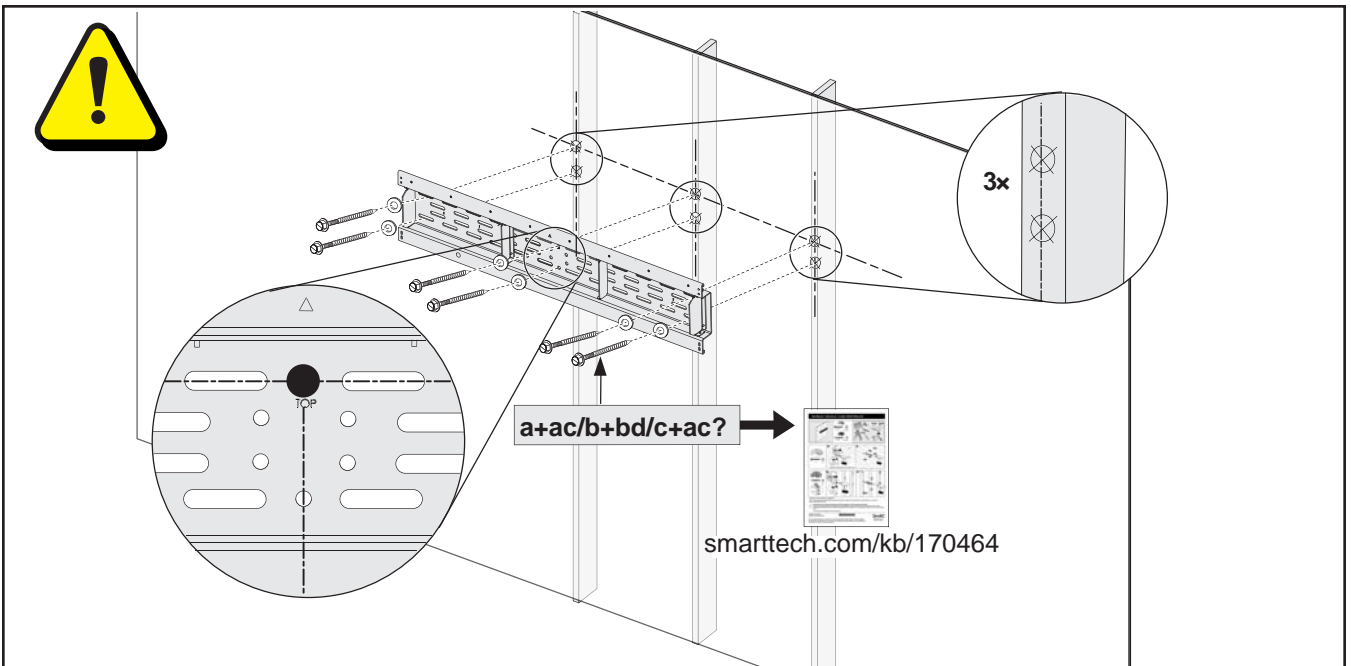
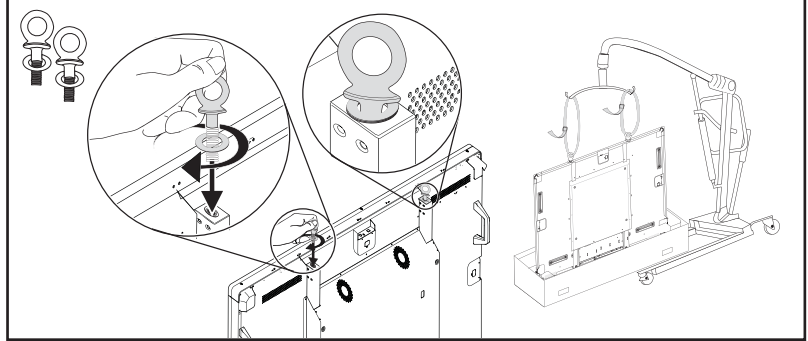
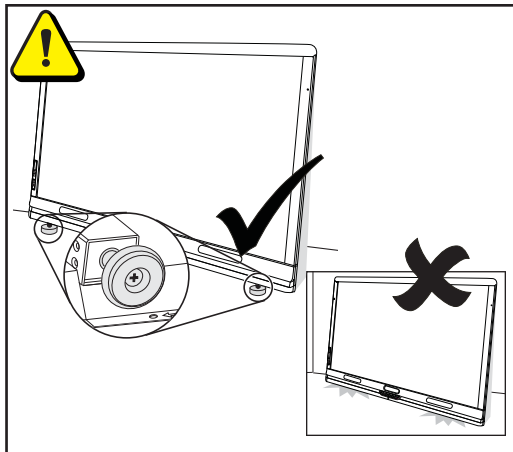
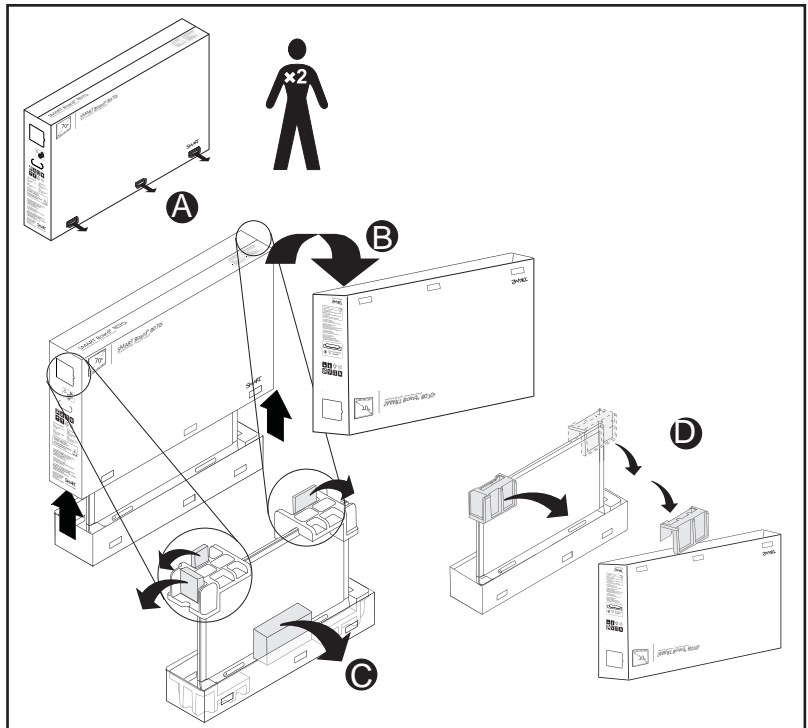
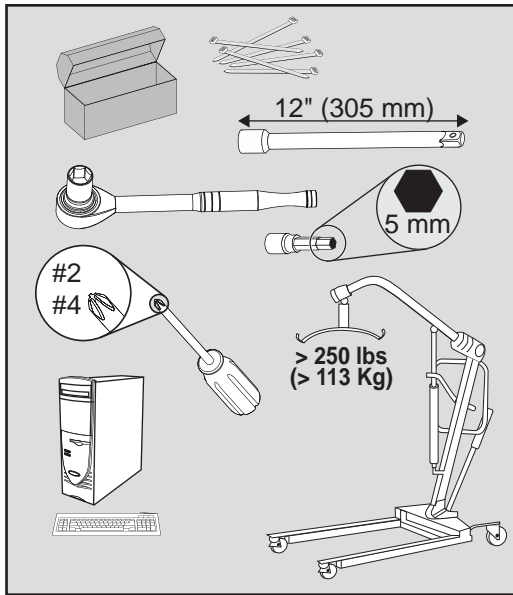
**SBID8070i-G4**

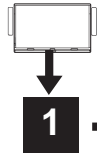
(x1) ↔ (x2) ↔ (x3)

**WM-SBID-501**

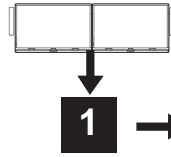
(x1) ↔ (x2) ↔ (x3)


[smarttech.com/kb/170464](http://smarttech.com/kb/170464)
**CSR500****CAM301****MIC500 (x2)****MIX500****RW-500**
[smarttech.com/kb/170466](http://smarttech.com/kb/170466)
**WS-SBID-500**
[smarttech.com/kb/170465](http://smarttech.com/kb/170465)
**SBID-G4-XTM**
[smarttech.com/kb/170532](http://smarttech.com/kb/170532)

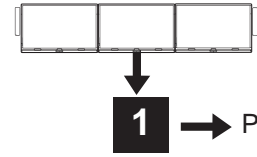




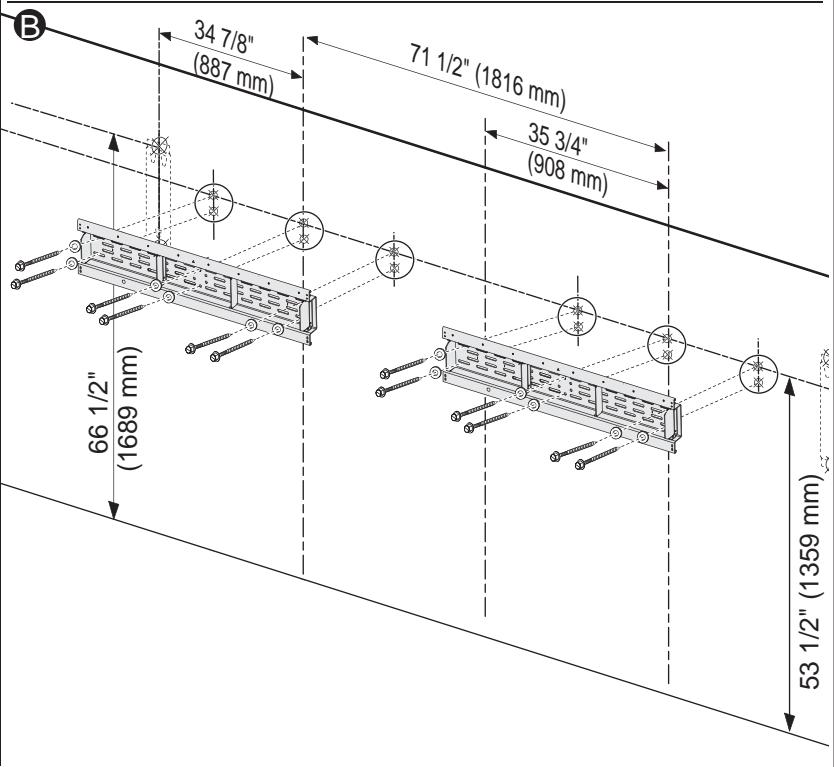
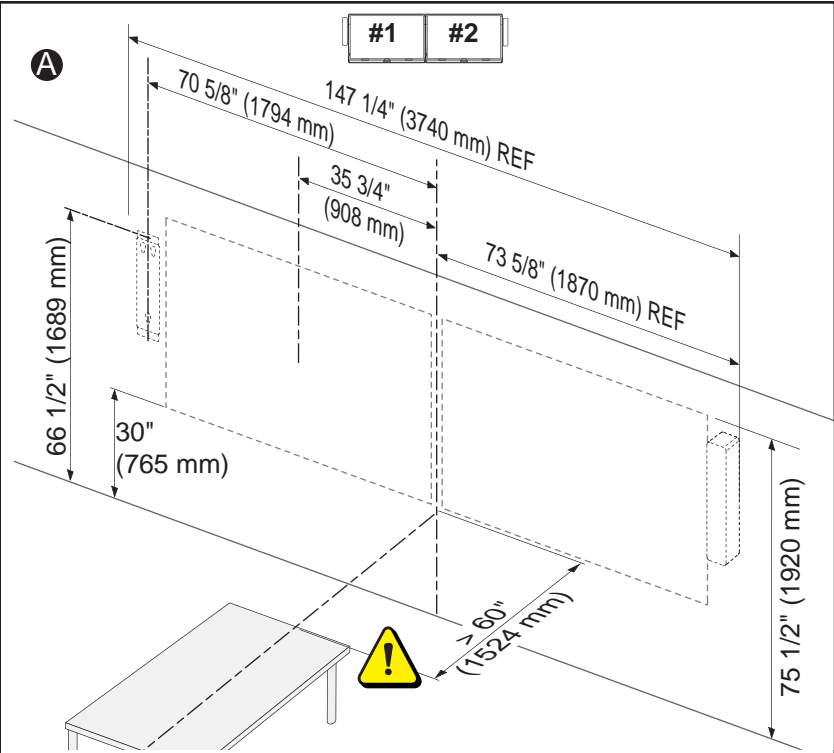
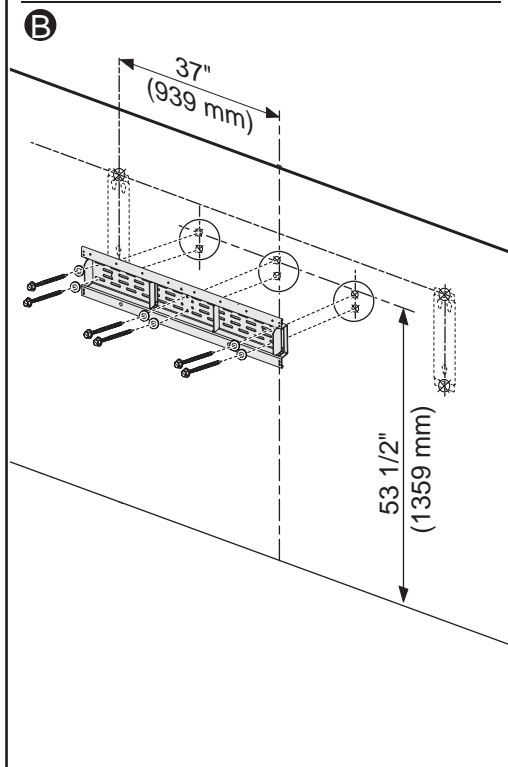
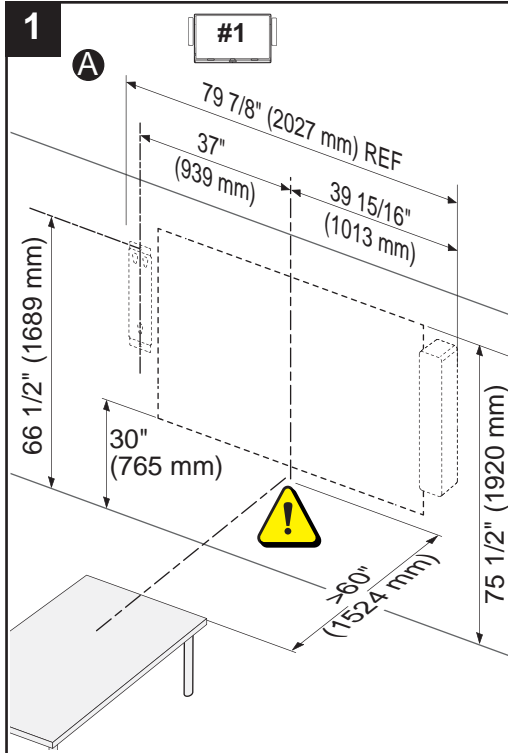
Pg. 5

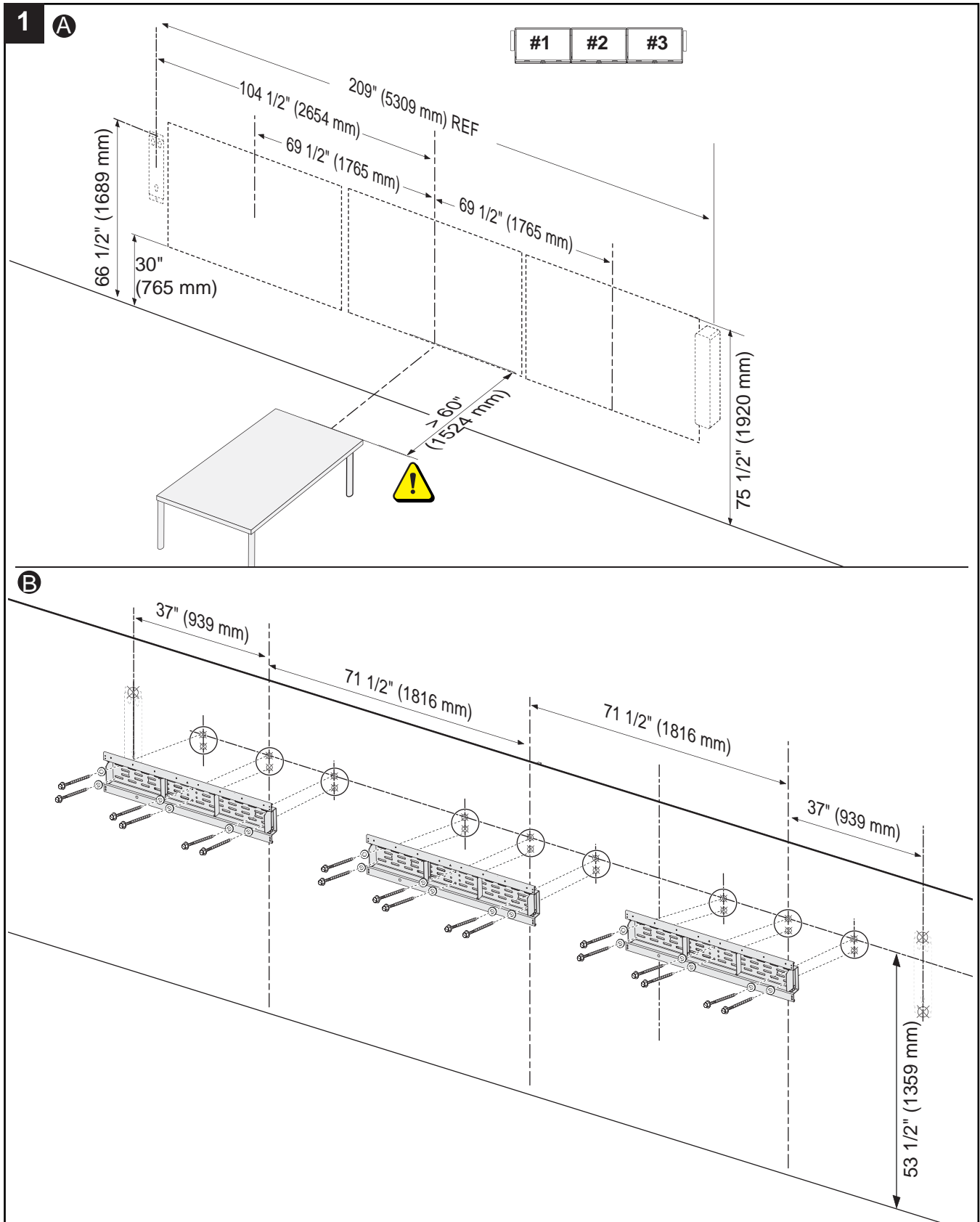


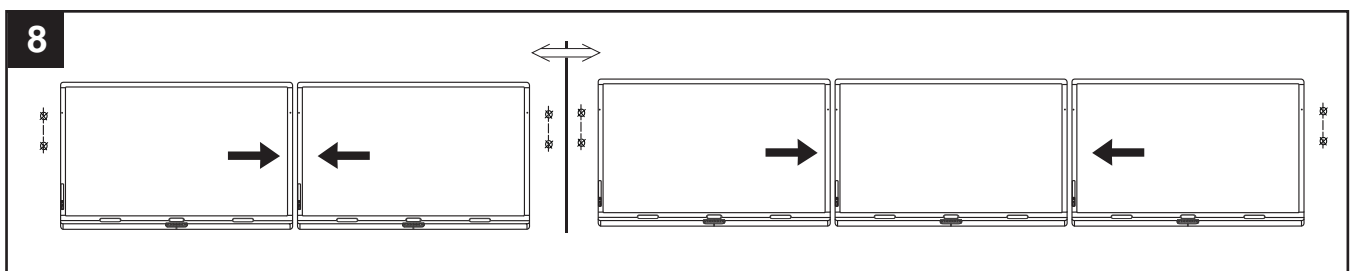
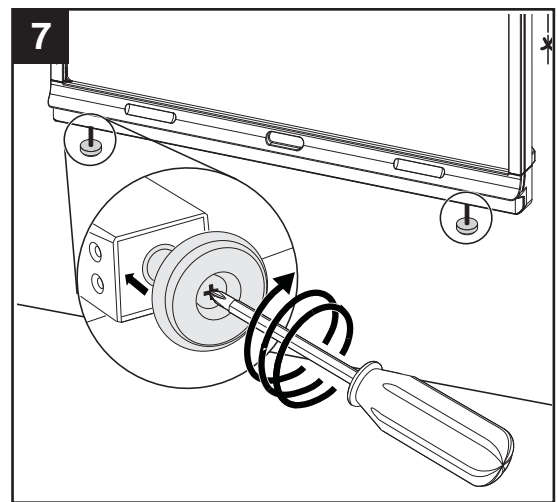
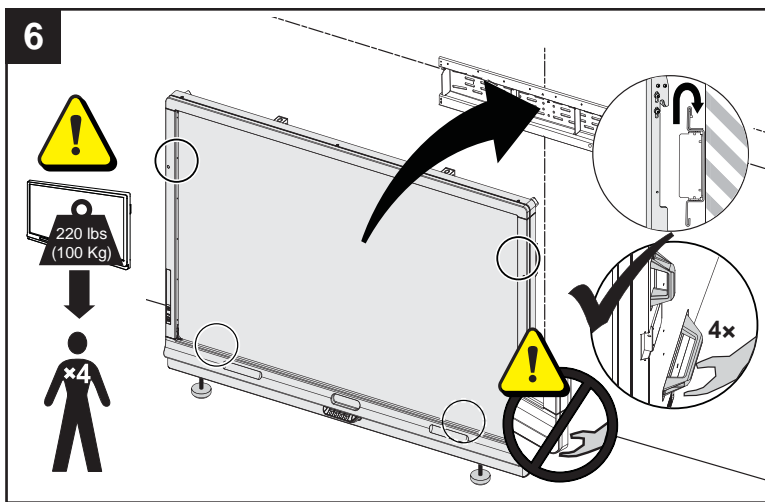
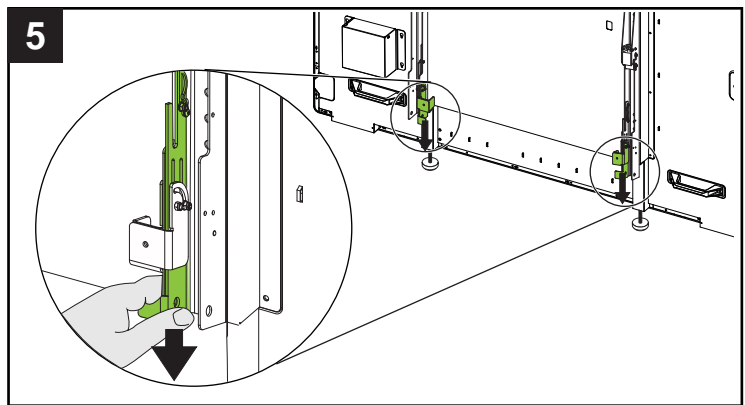
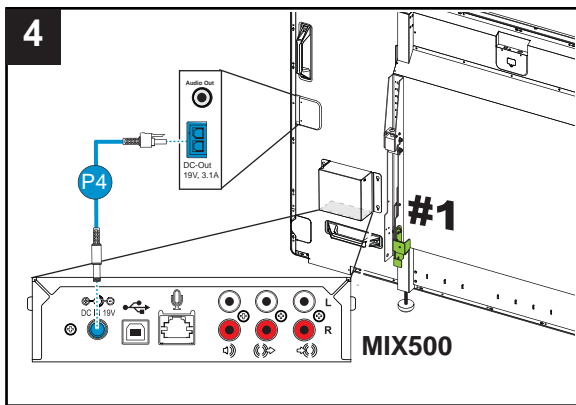
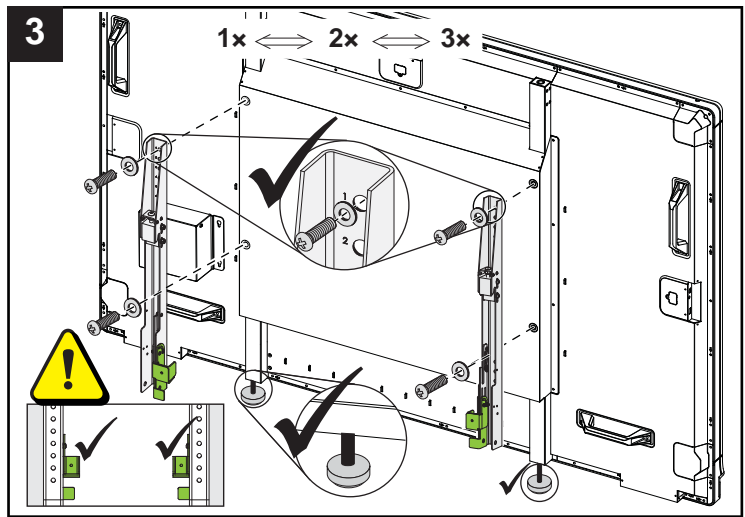
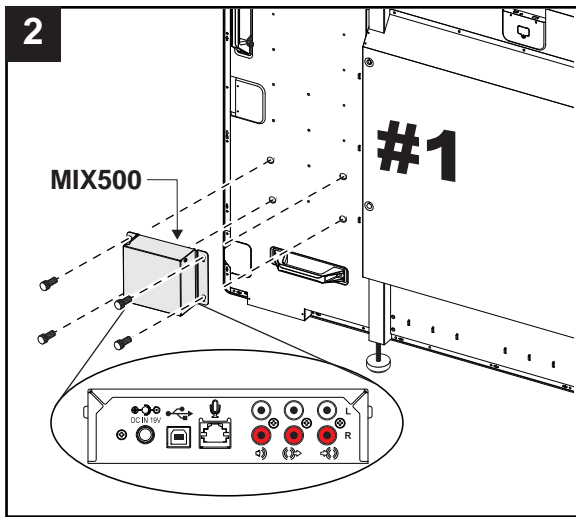
Pg. 5

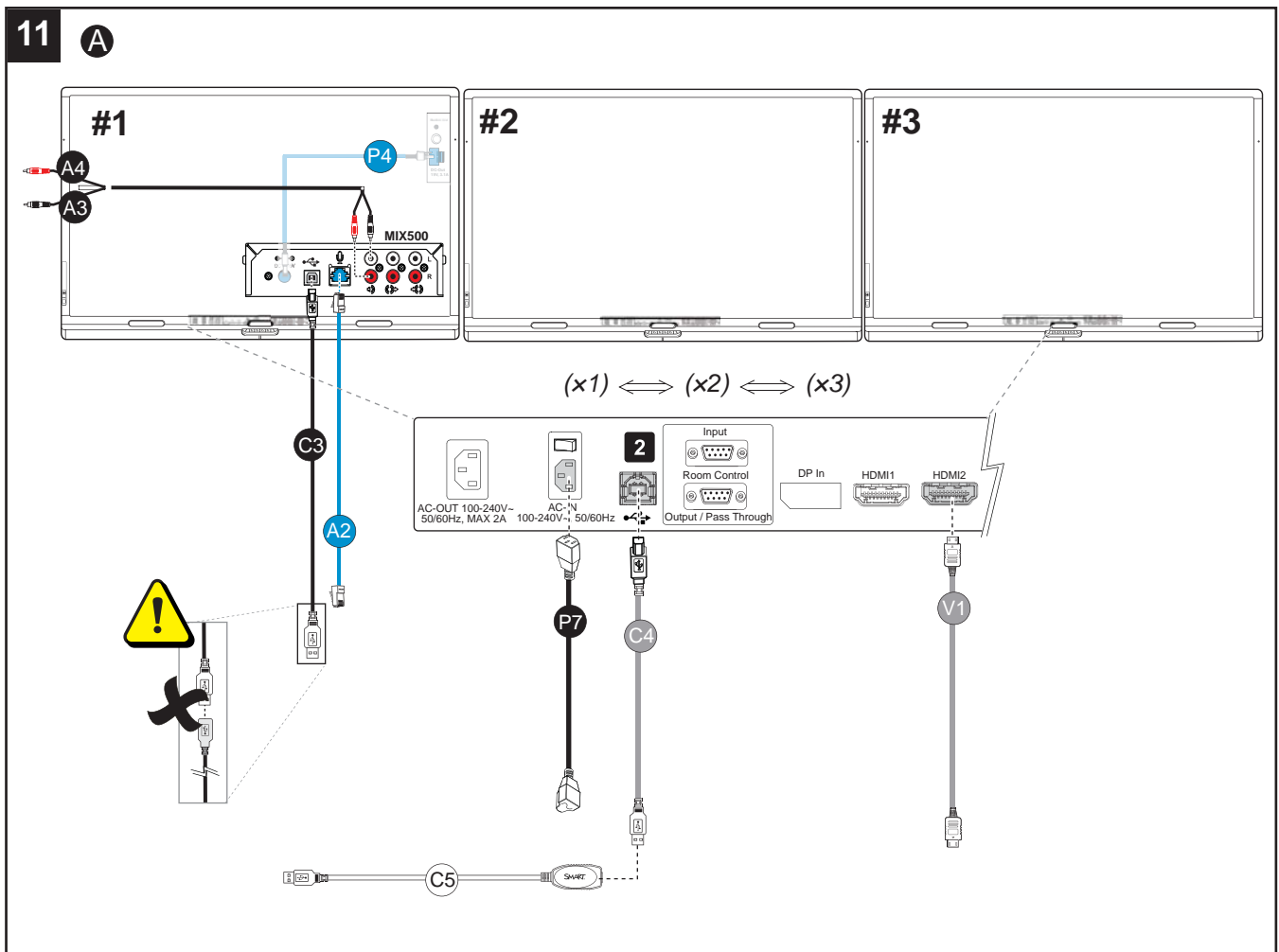
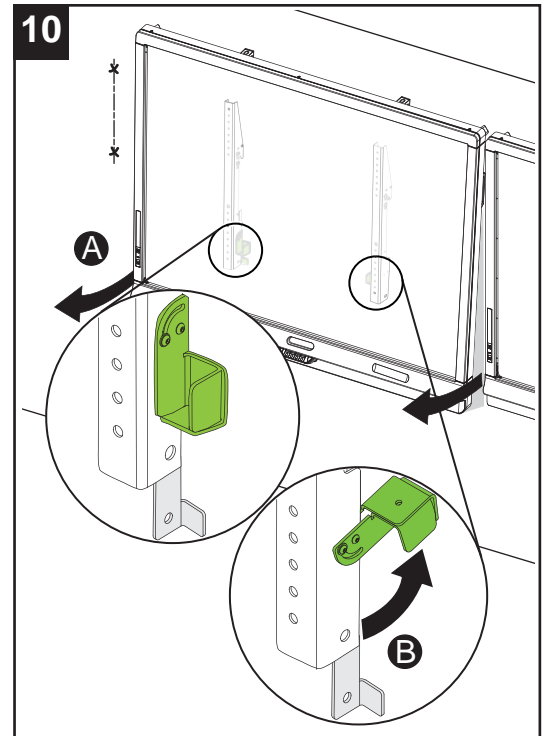
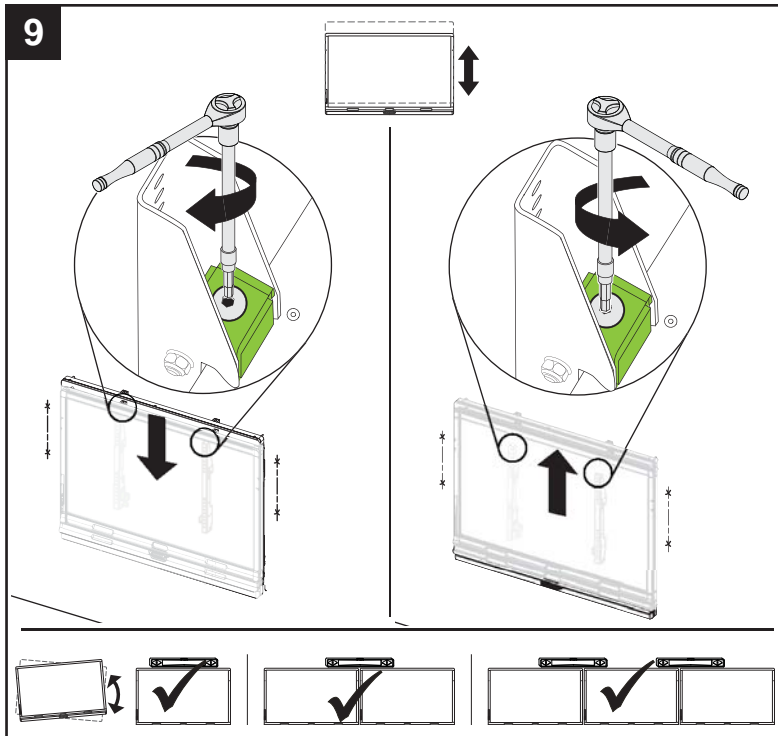


Pg. 6



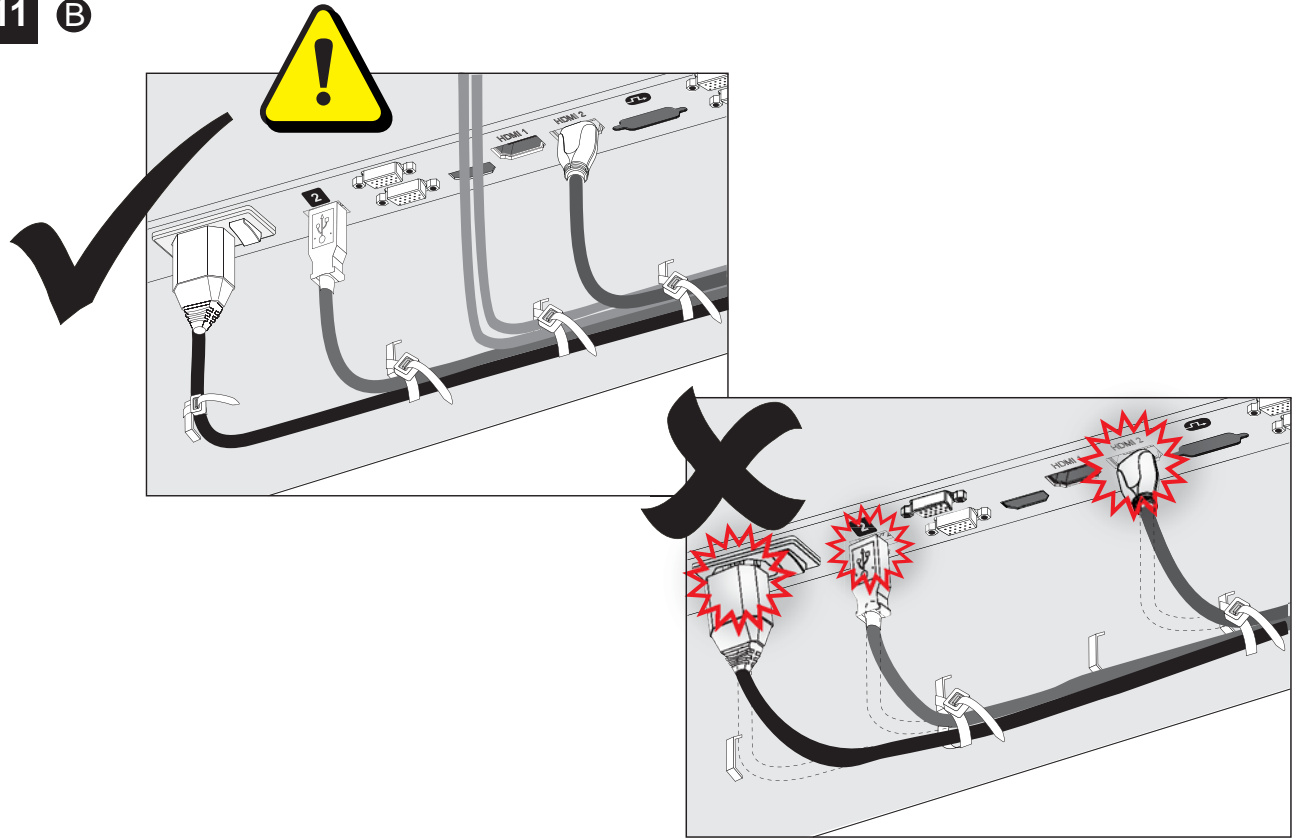




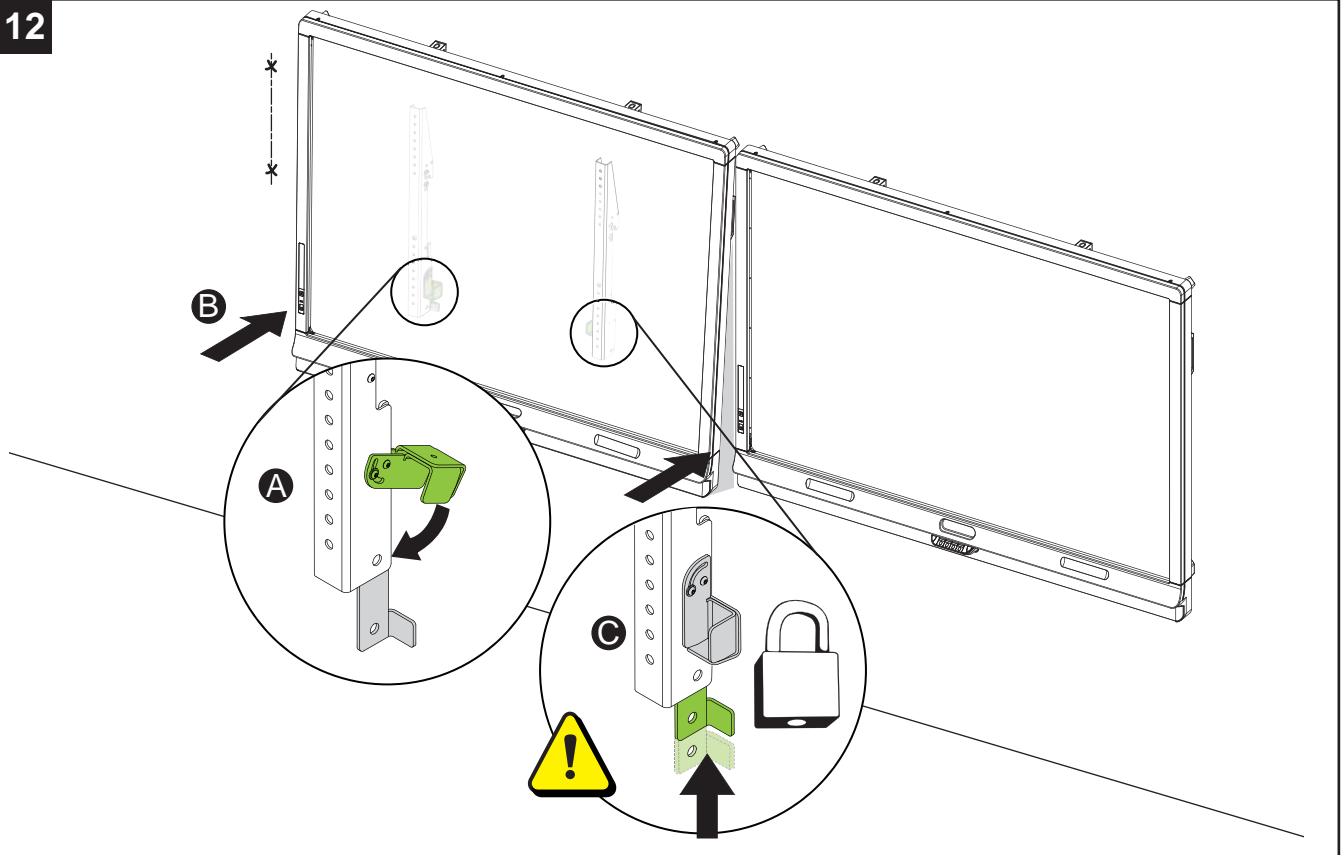


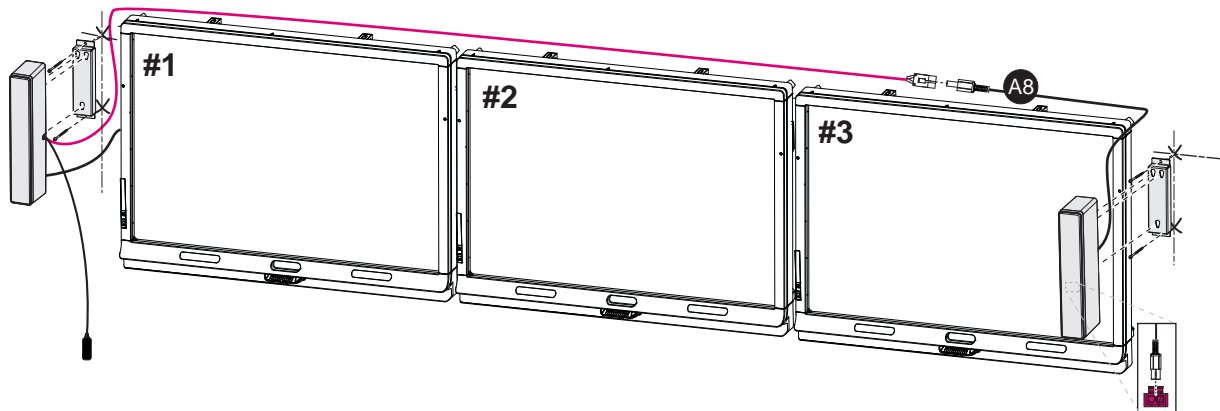
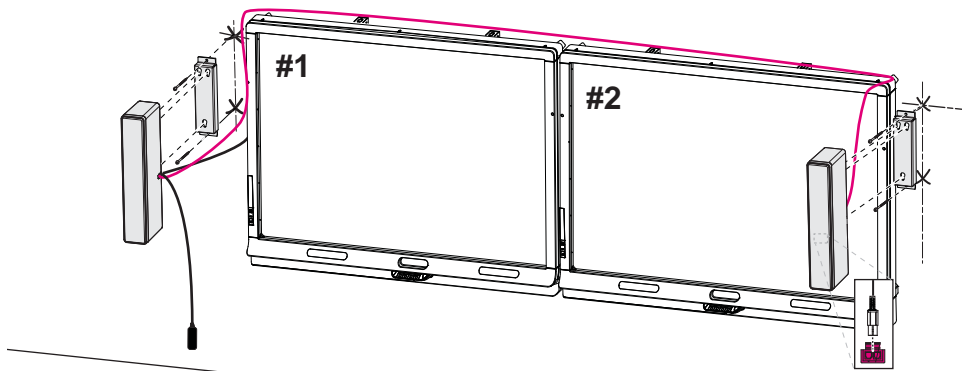
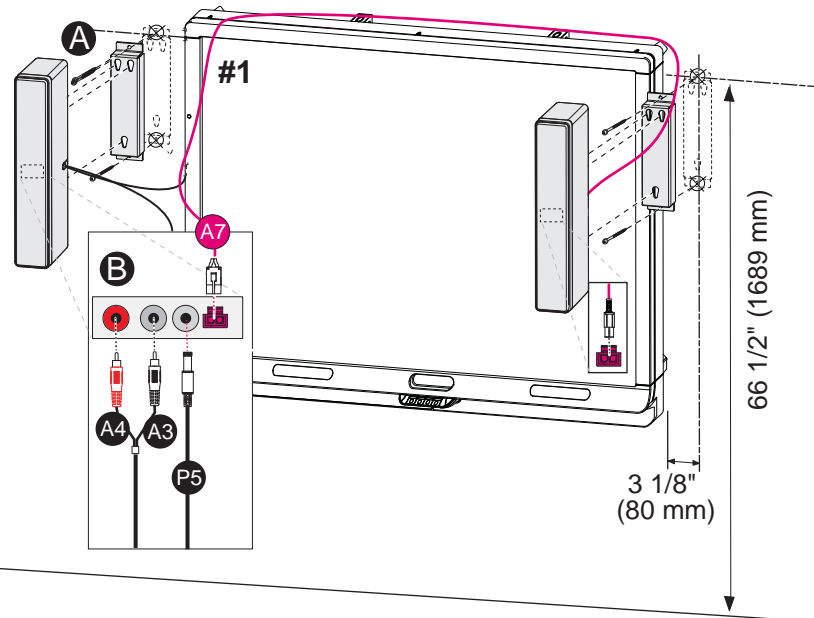


11 B



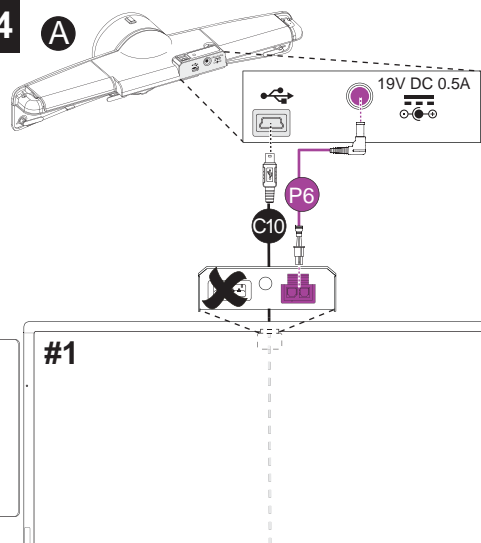
12



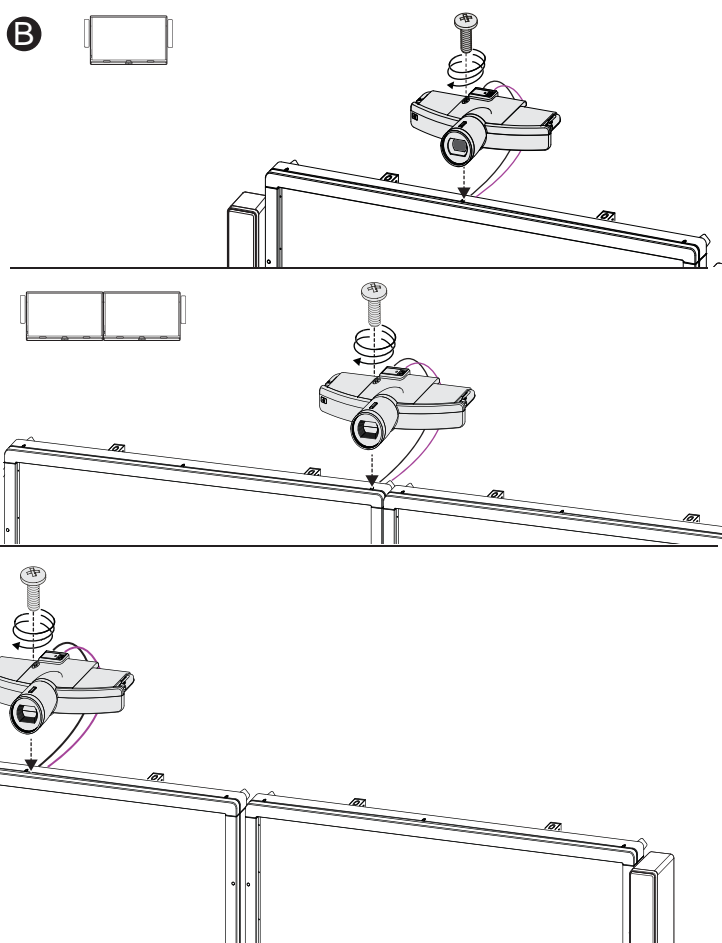


14

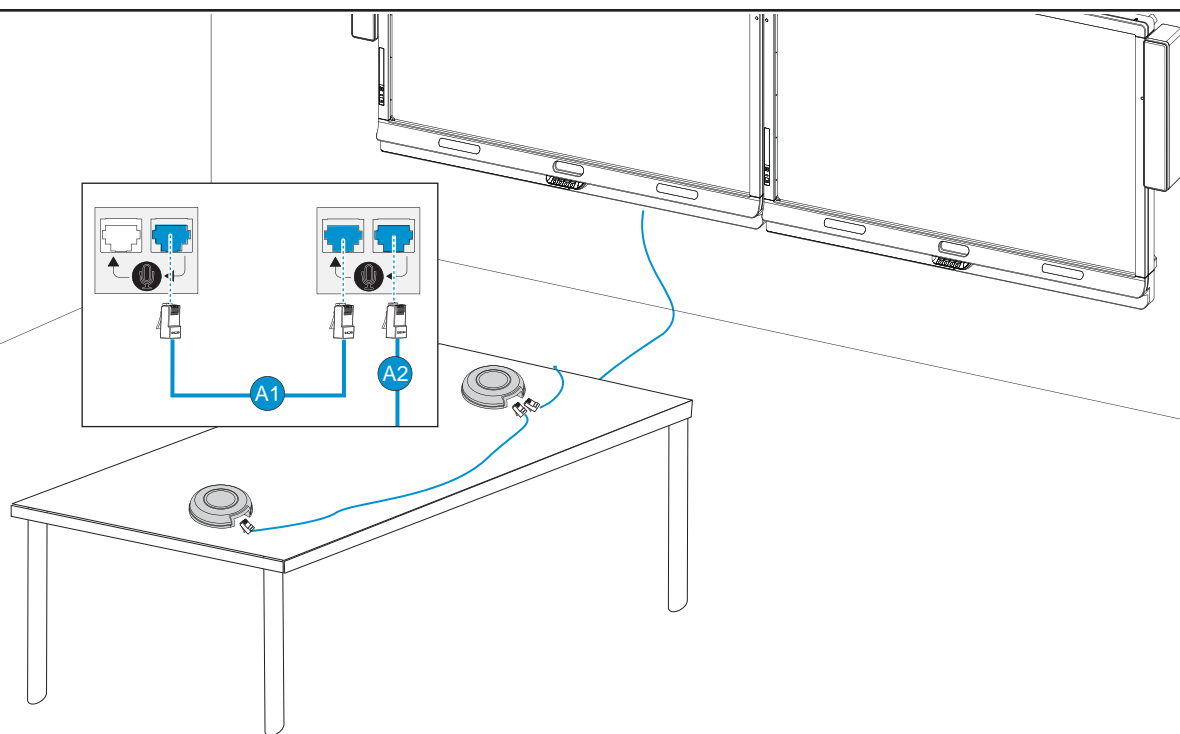
A

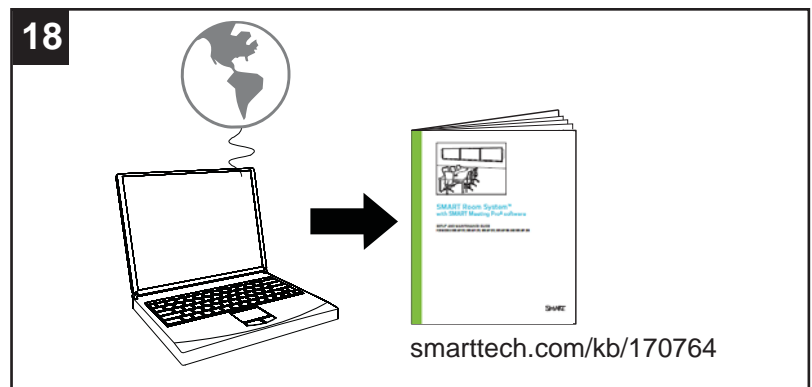
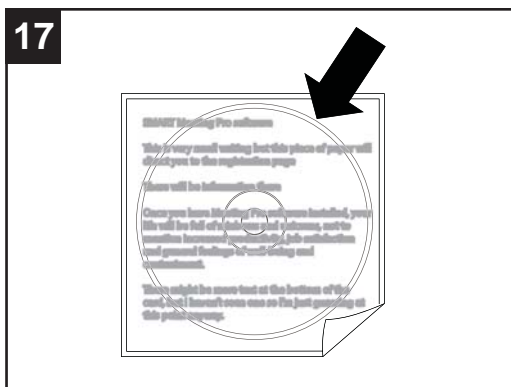
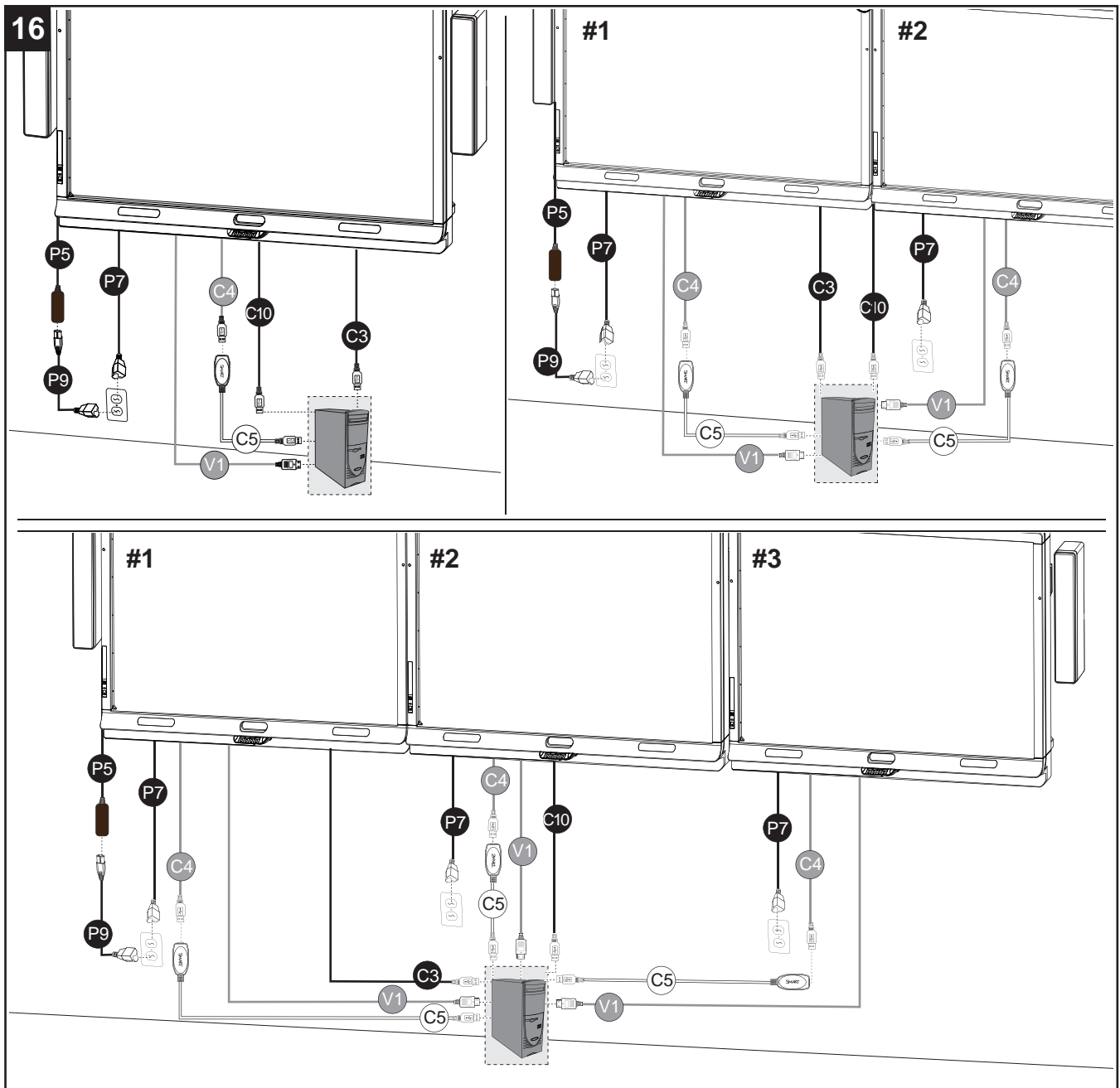


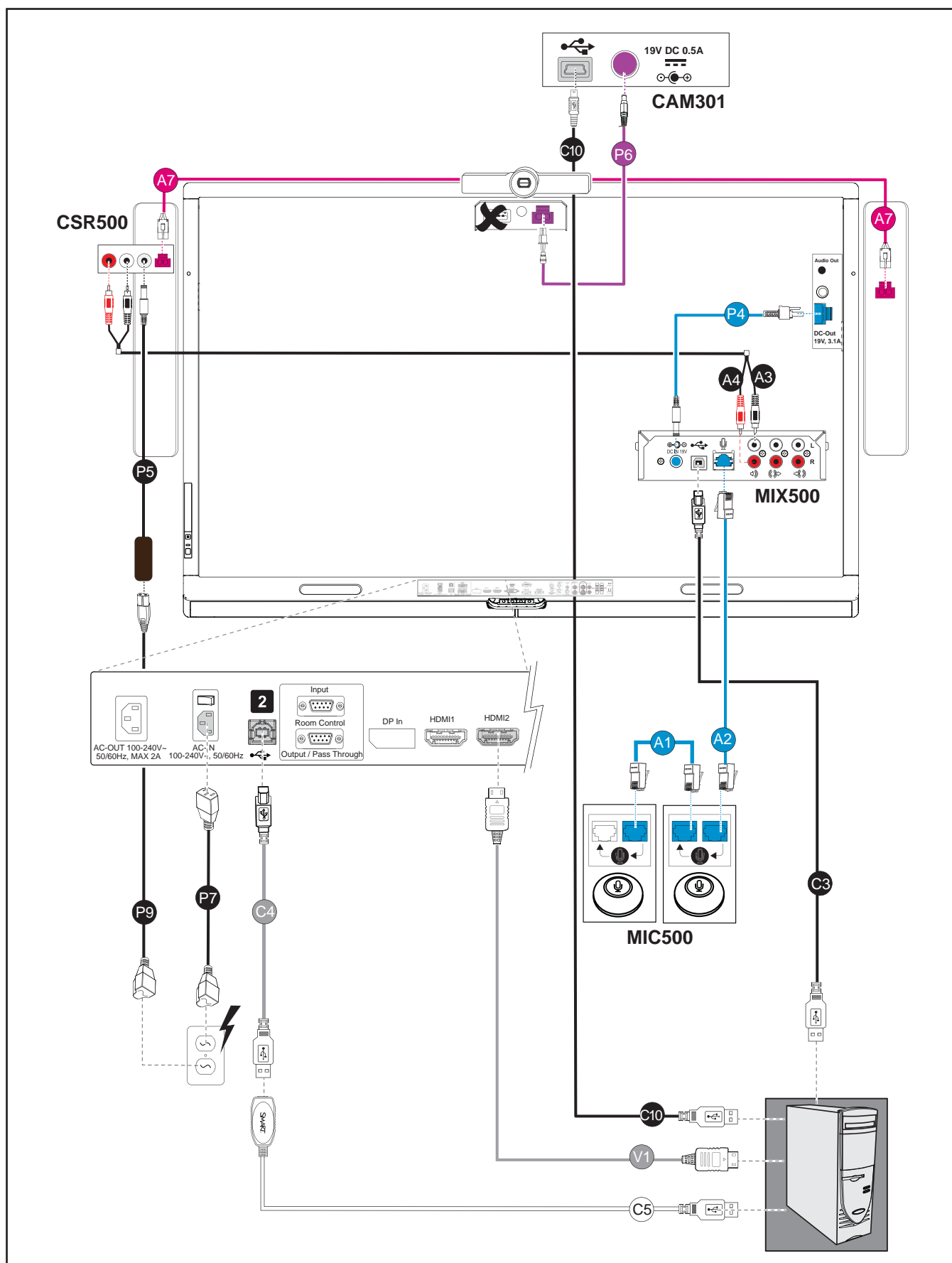
B

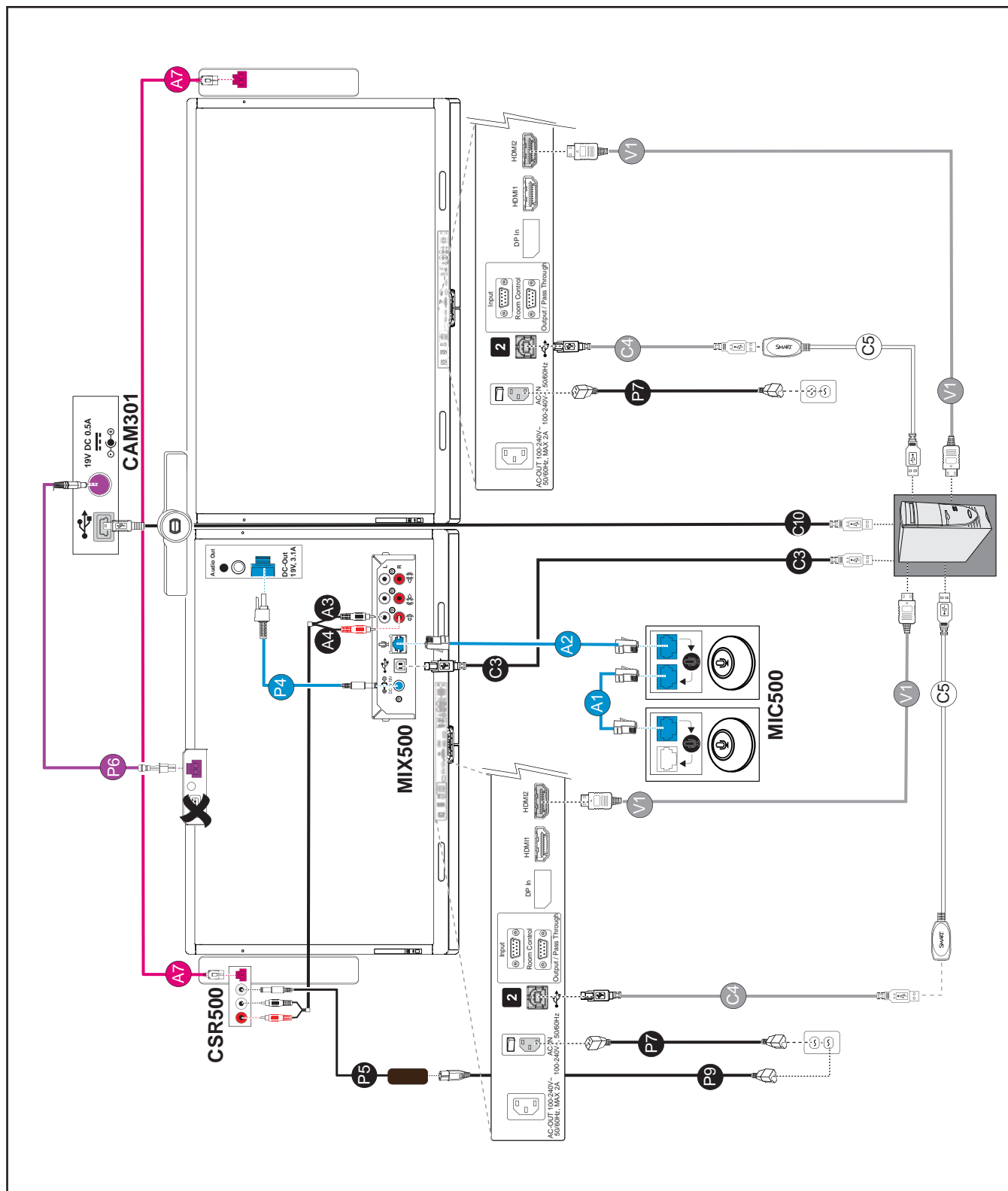


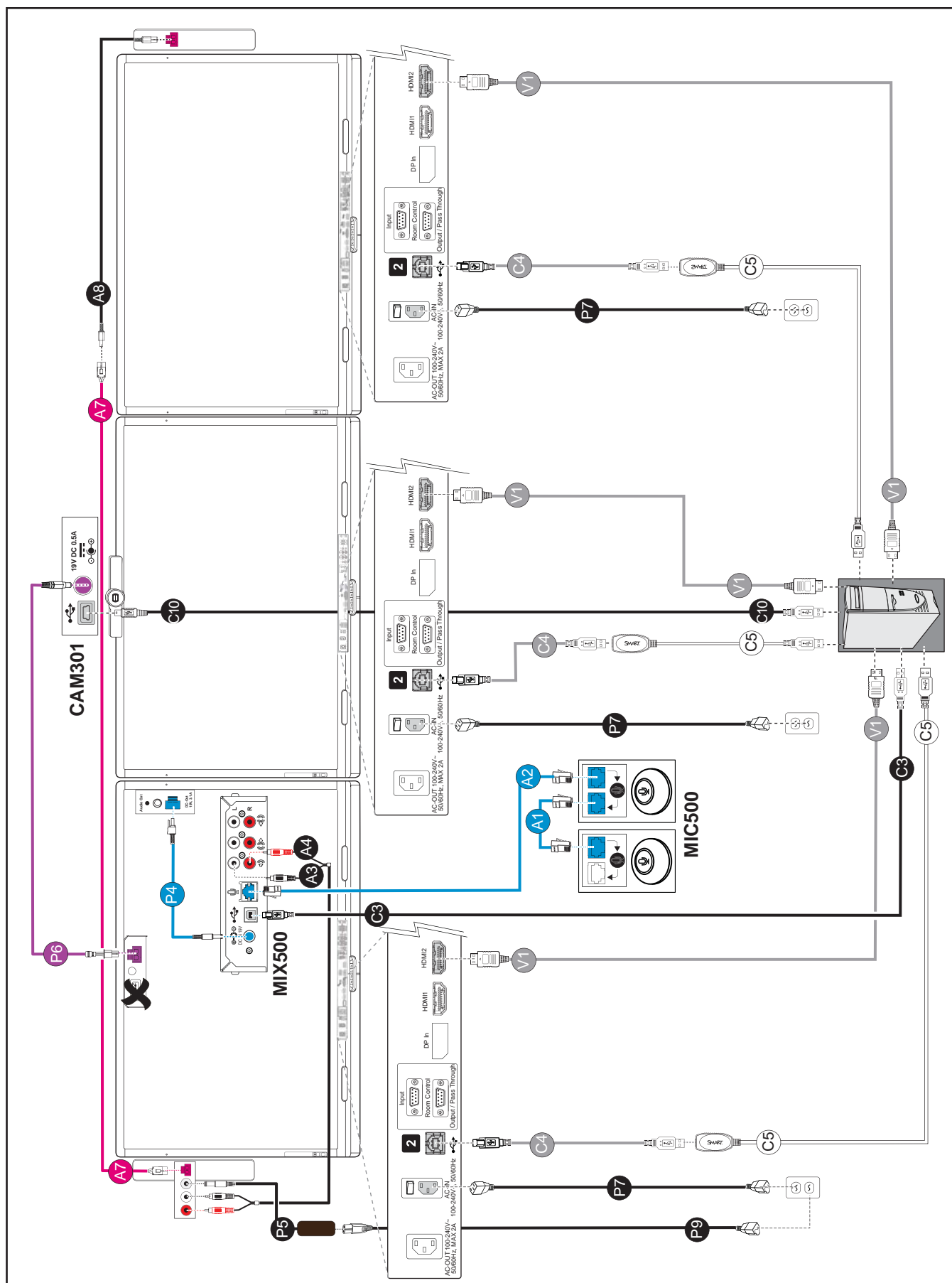
15











## Hardware environmental compliance

SMART Technologies supports global efforts to ensure that electronic equipment is manufactured, sold and disposed of in a safe and environmentally friendly manner.



### Waste Electrical and Electronic Equipment and Battery regulations (WEEE and Battery Directives)

Electrical and electronic equipment and batteries contain substances that can be harmful to the environment and to human health. The crossed-out wheeled bin symbol indicates that products should be disposed of in the appropriate recycling stream and not as regular waste.



### Batteries

The remote contains an AAA battery. Recycle or dispose of batteries properly.

See [smarttech.com/compliance](http://smarttech.com/compliance) for more information.



[smarttech.com/support](http://smarttech.com/support)  
[smarttech.com/contactsupport](http://smarttech.com/contactsupport)

**SMART**<sup>®</sup>

1024960 Rev 01

© 2014 SMART Technologies ULC. All rights reserved. SMART Board, smarttech, the SMART logo and all SMART taglines are trademarks or registered trademarks of SMART Technologies ULC in the U.S. and/or other countries. All third-party products and company names may be trademarks of their respective owners. Contents are subject to change without notice. This product and/or use thereof covered by one or more of the following U.S. patents; [smarttech.com/patents](http://smarttech.com/patents). Other patents pending. 06/2014.

[smarttech.com/kb/170671](http://smarttech.com/kb/170671)