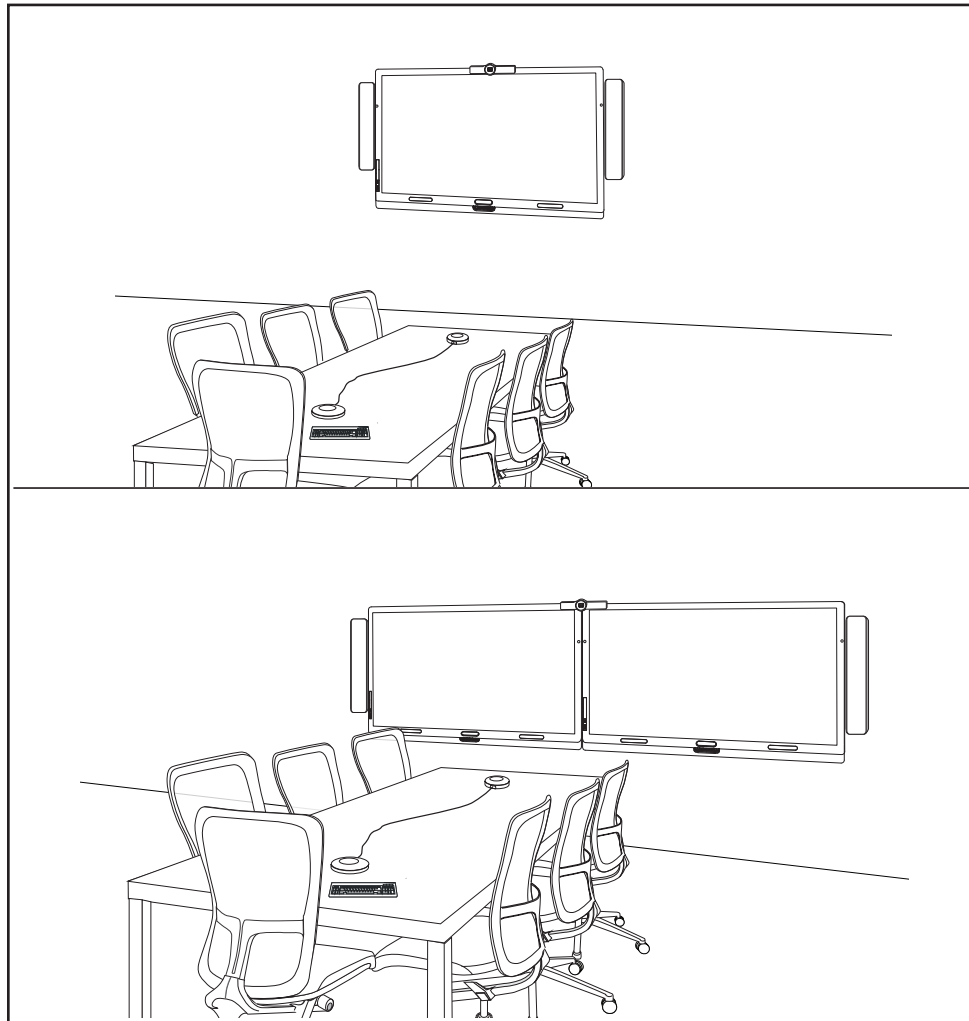


# SMART Room System

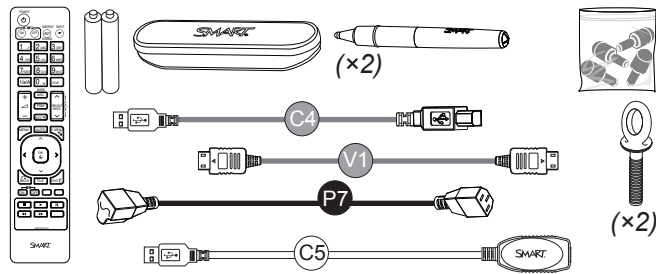
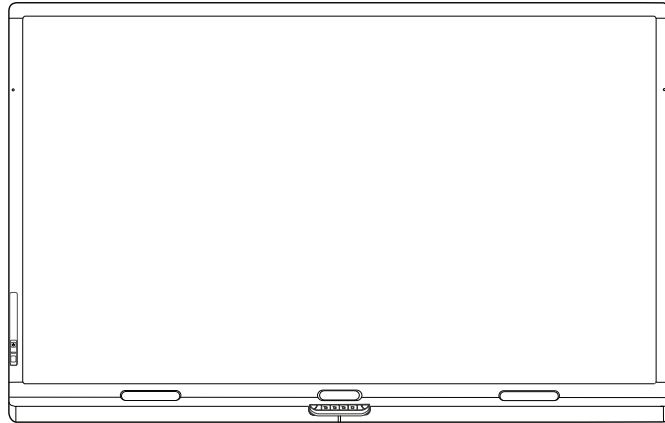
SRS-MP-184

SRS-MP-284



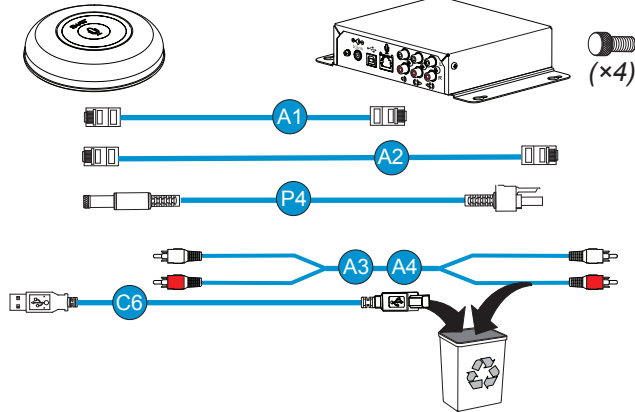
# SBID8084i-G4

(×1) ↔ (×2)



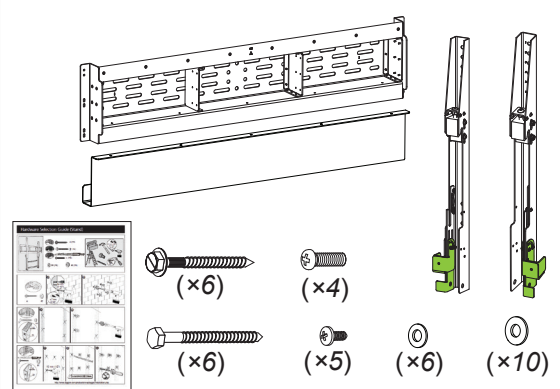
## MIC500 (×2)

## MIX500



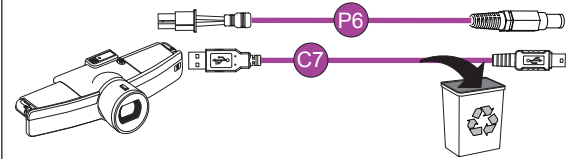
# WM-SBID-502

(×1) ↔ (×2)

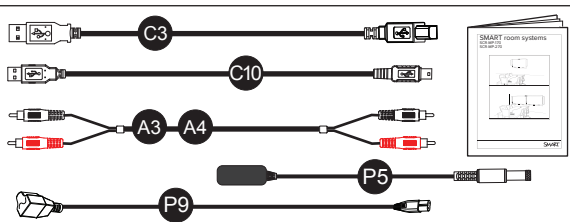
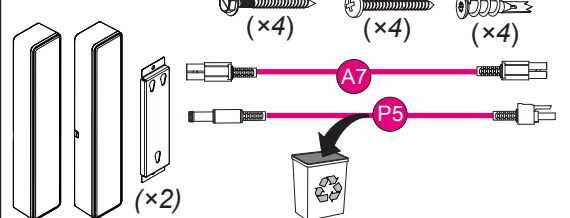


smarttech.com/kb/170464

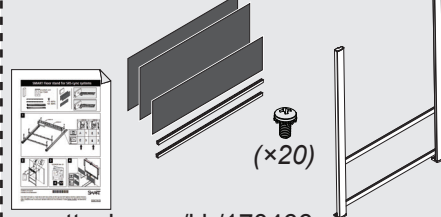
## CAM301



## CSR500

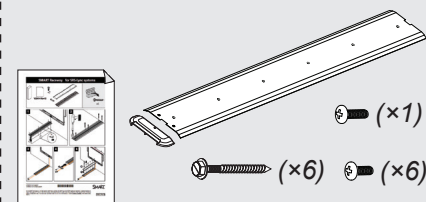


## WS-SBID-500

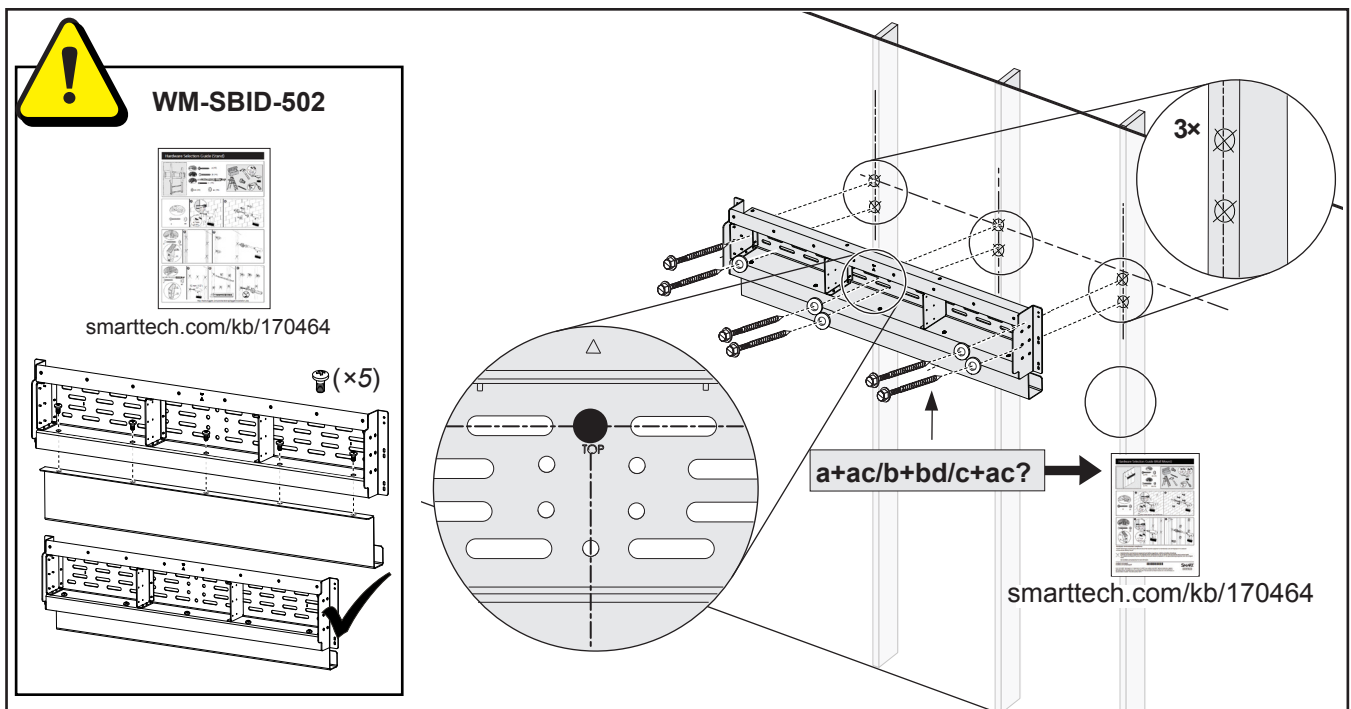
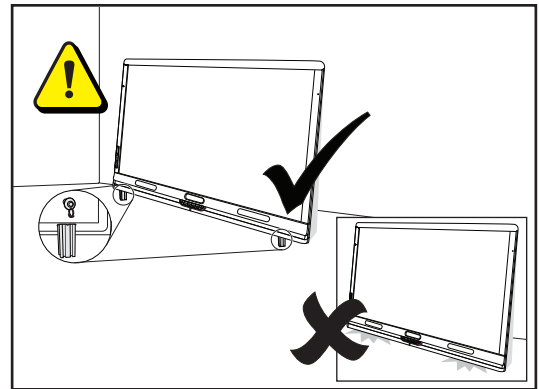
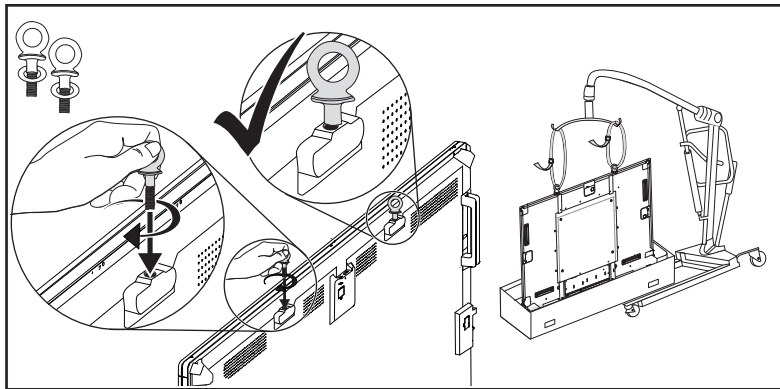
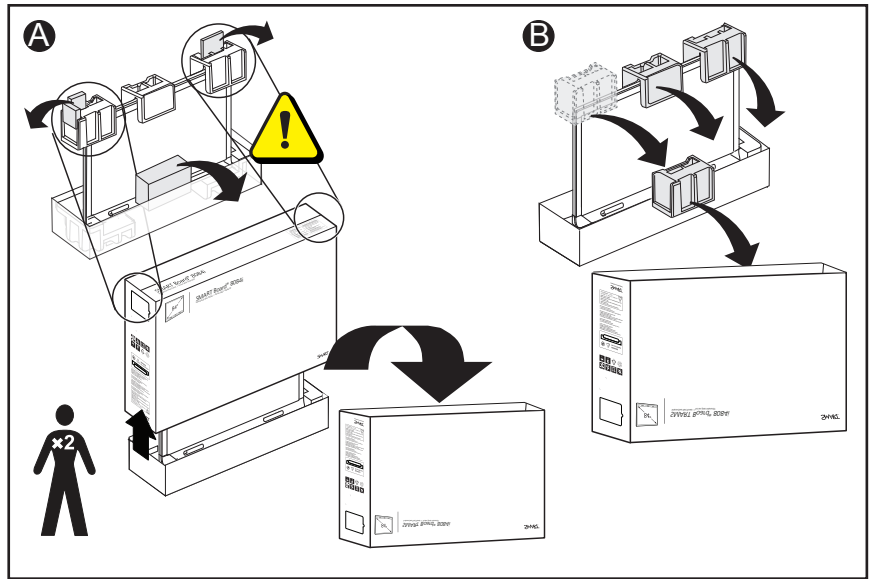
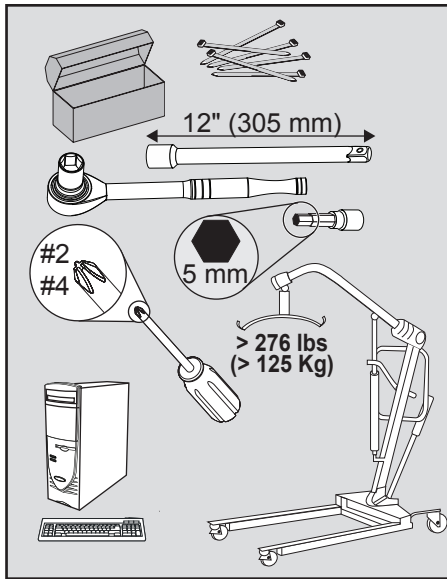


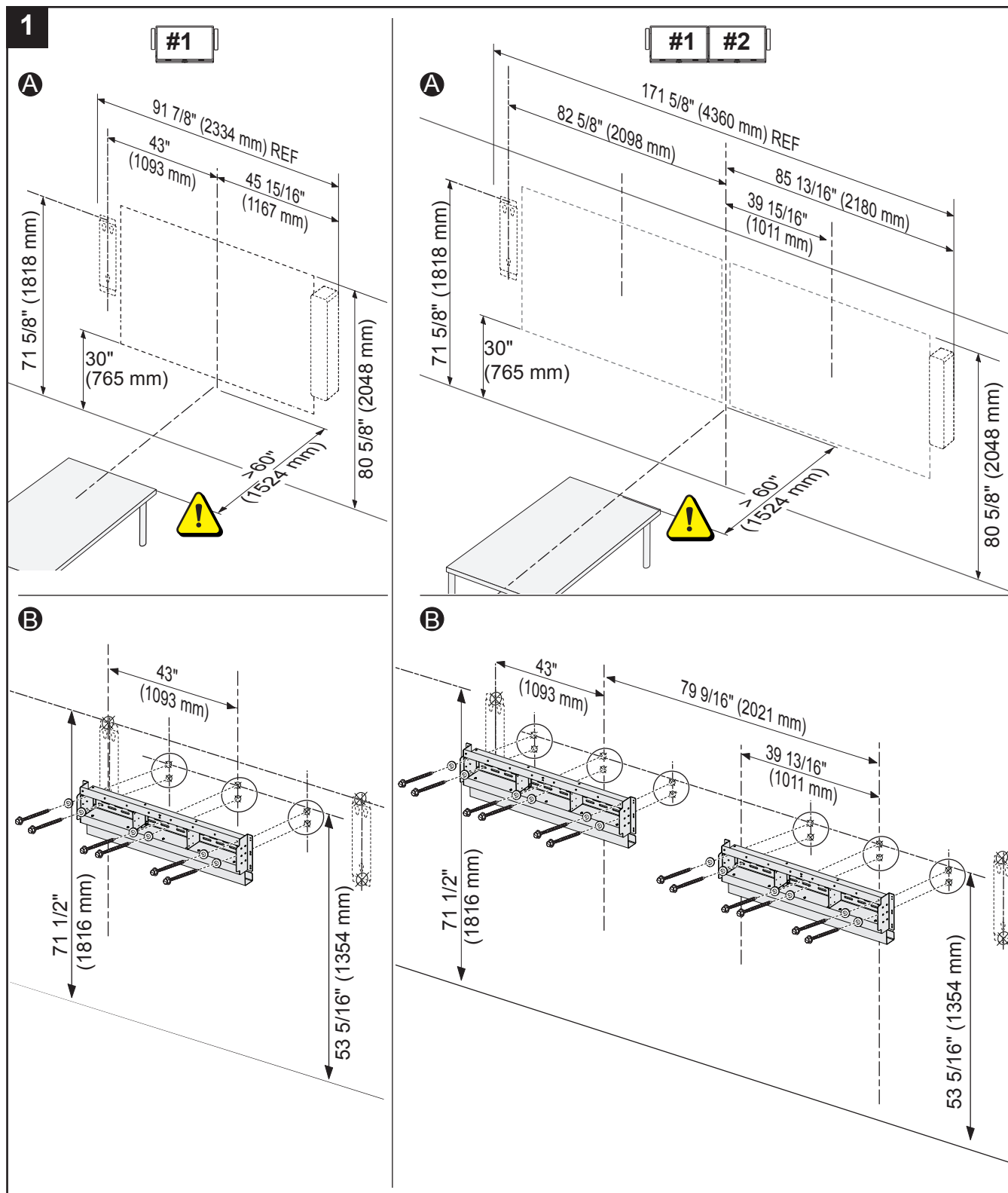
smarttech.com/kb/170466

## RW-500

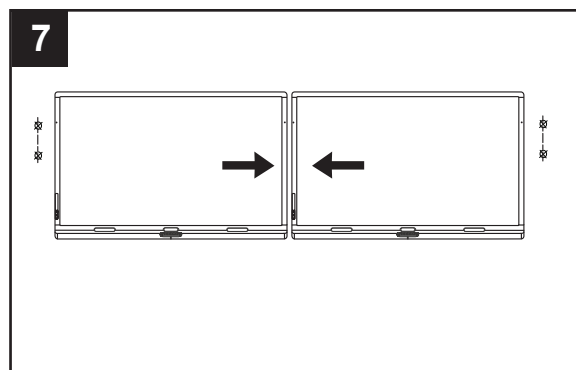
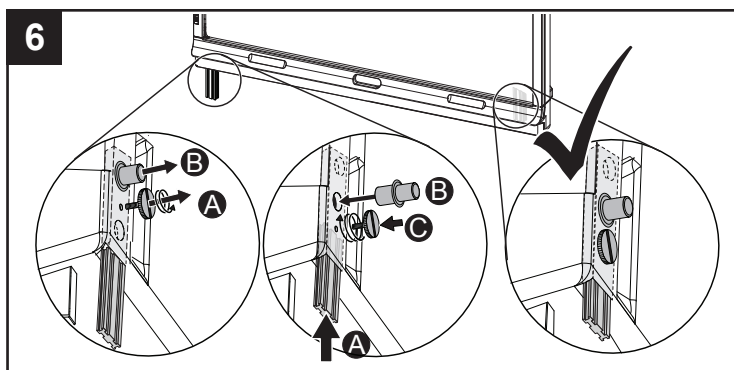
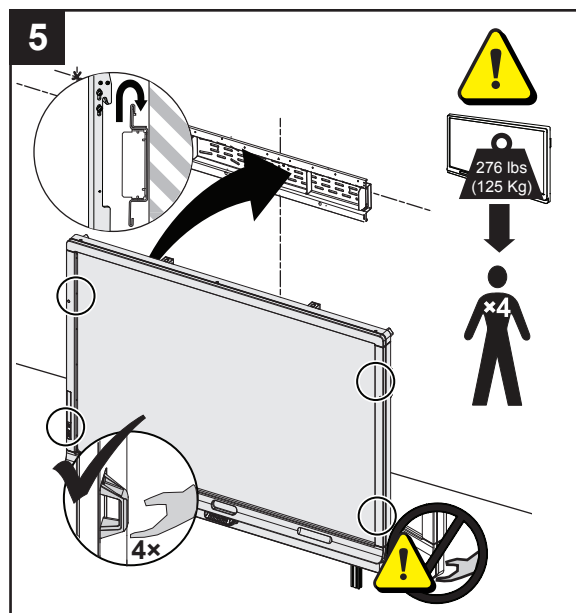
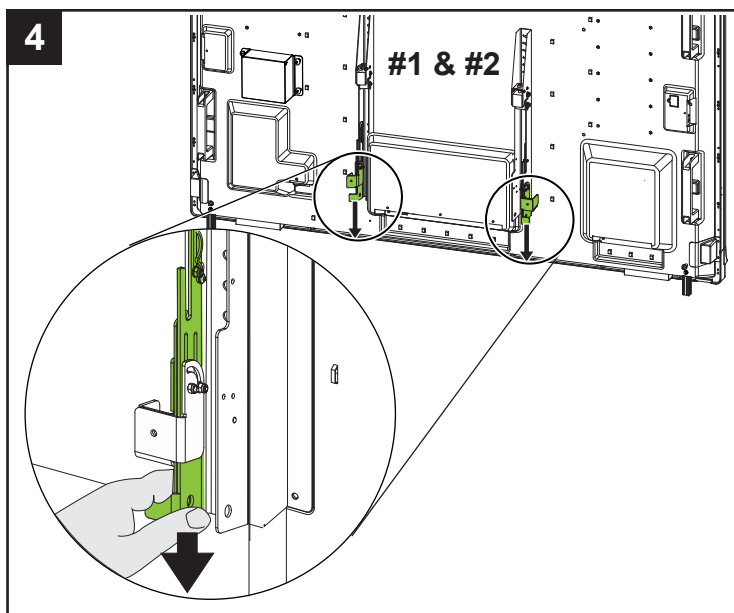
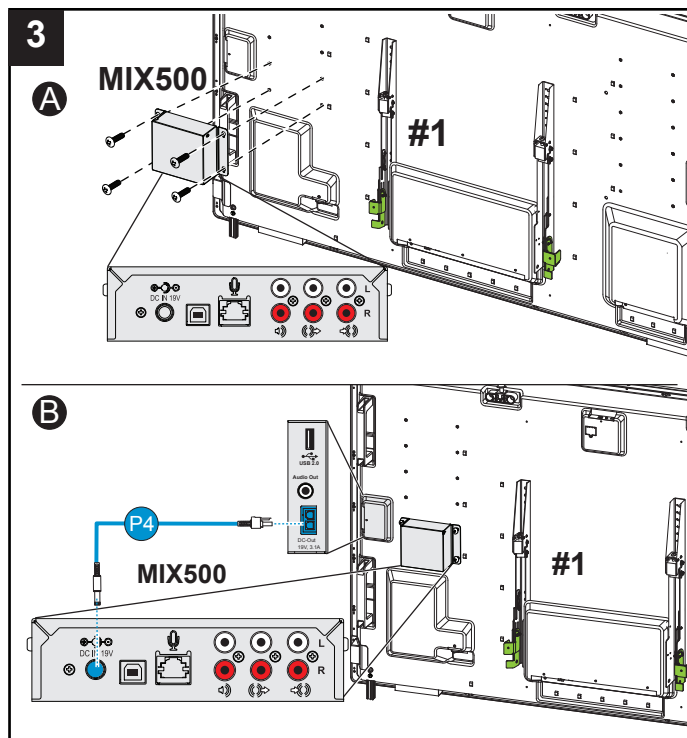
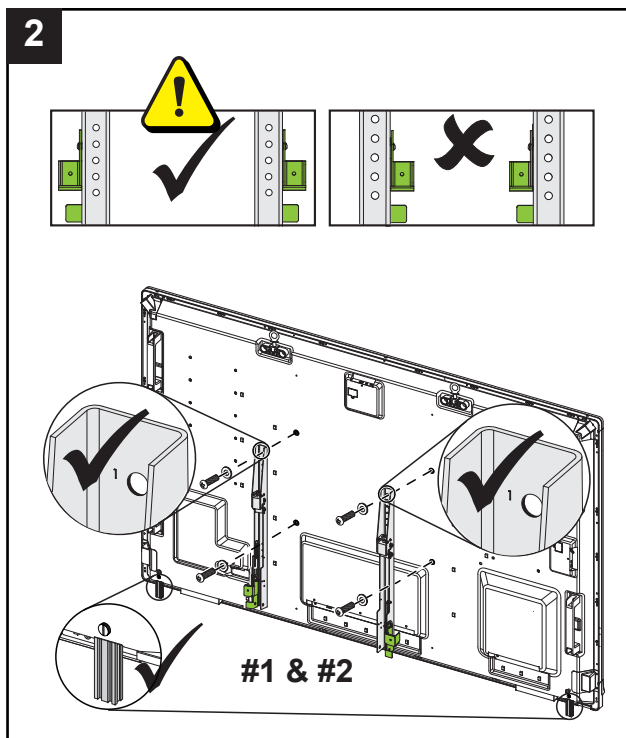


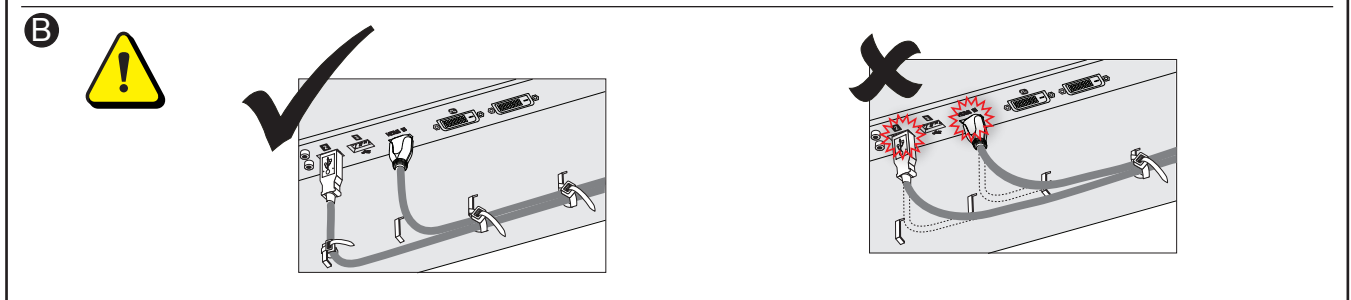
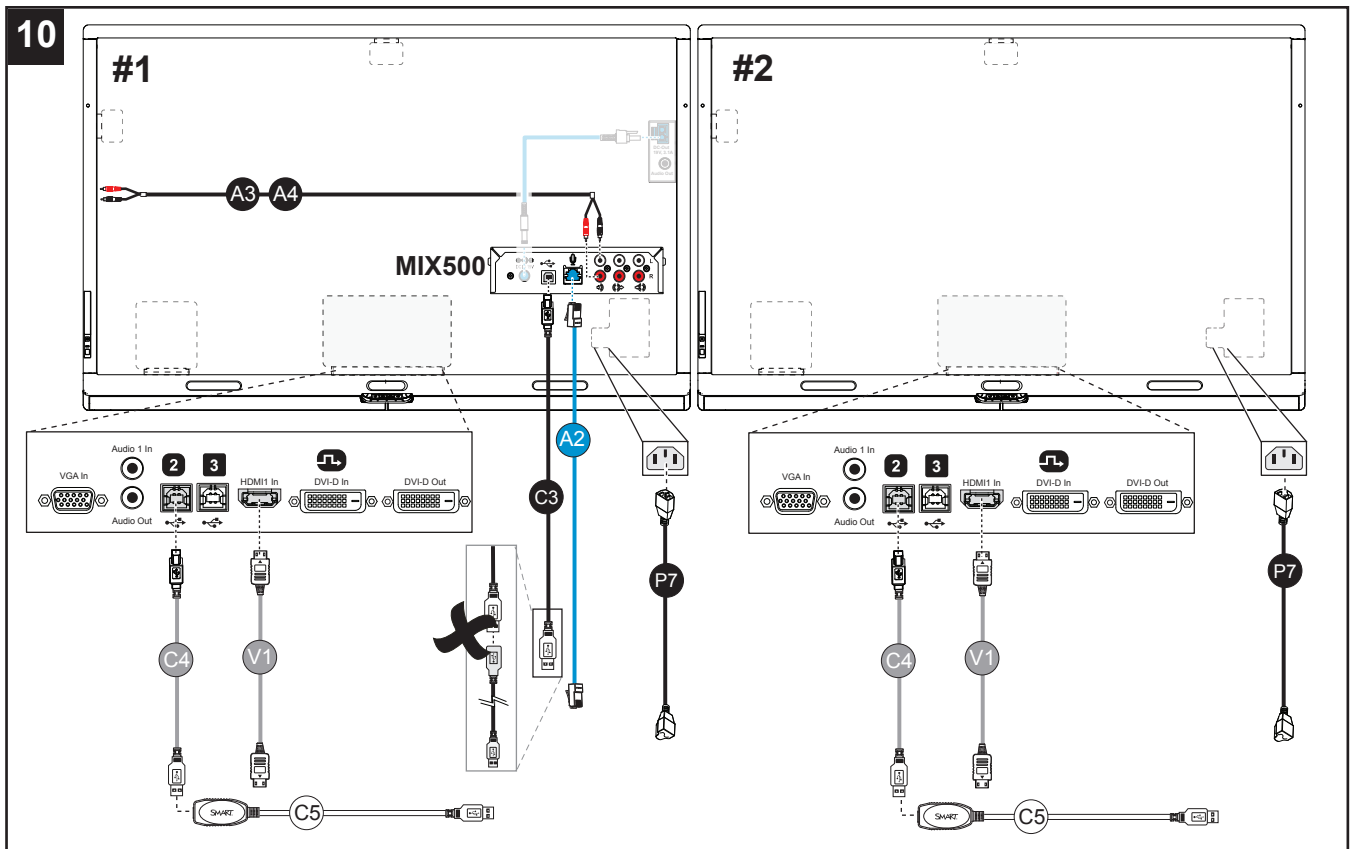
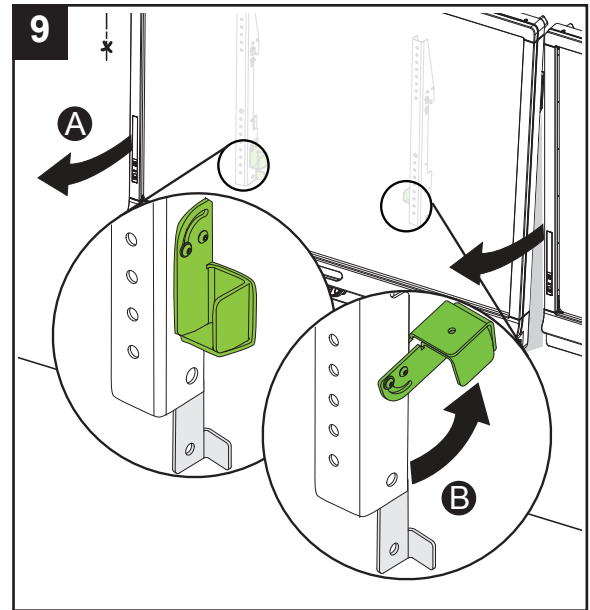
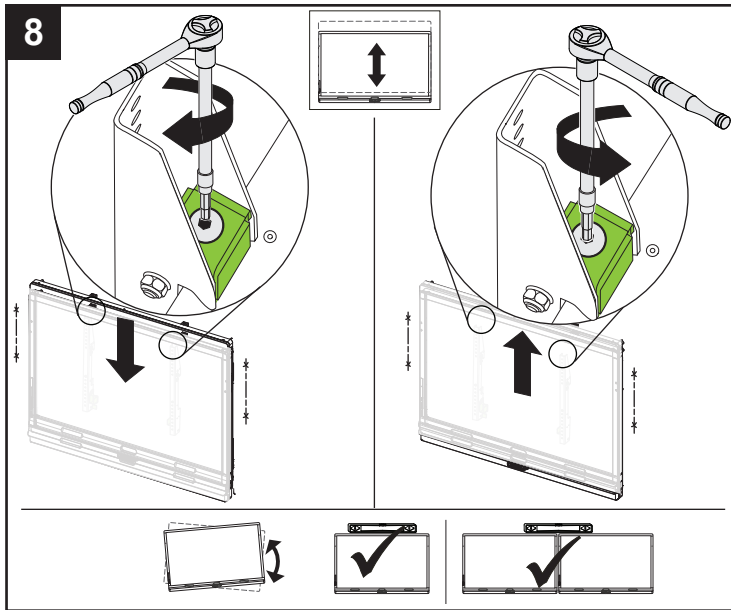
smarttech.com/kb/170465



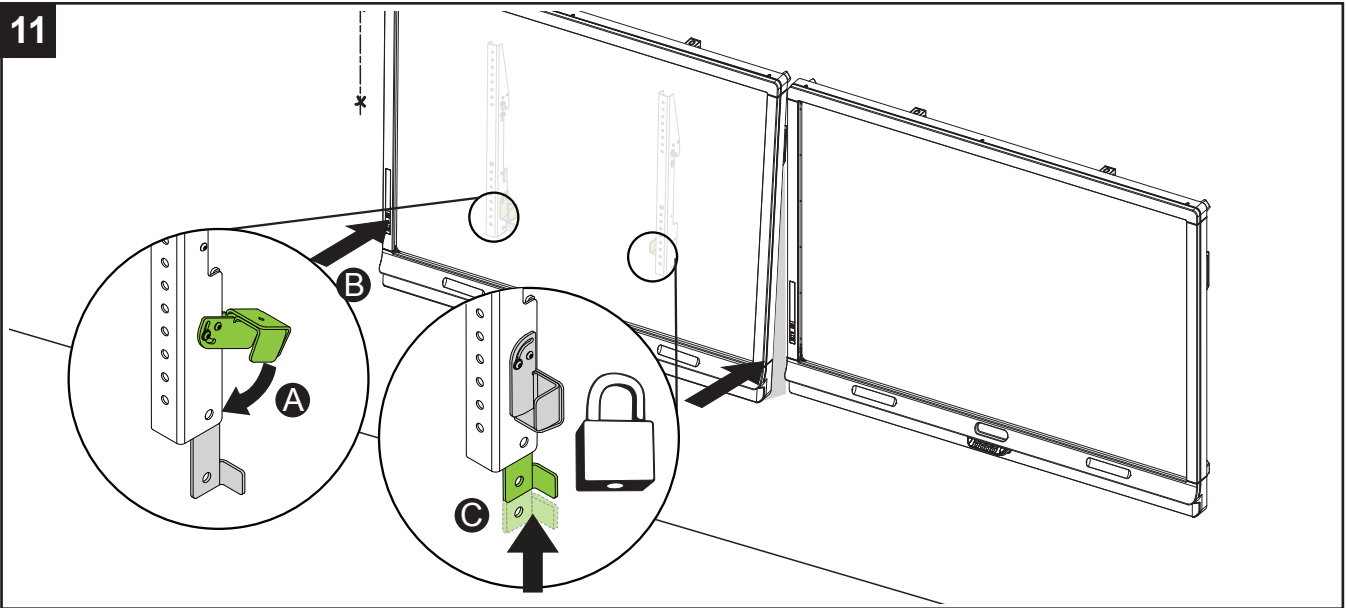




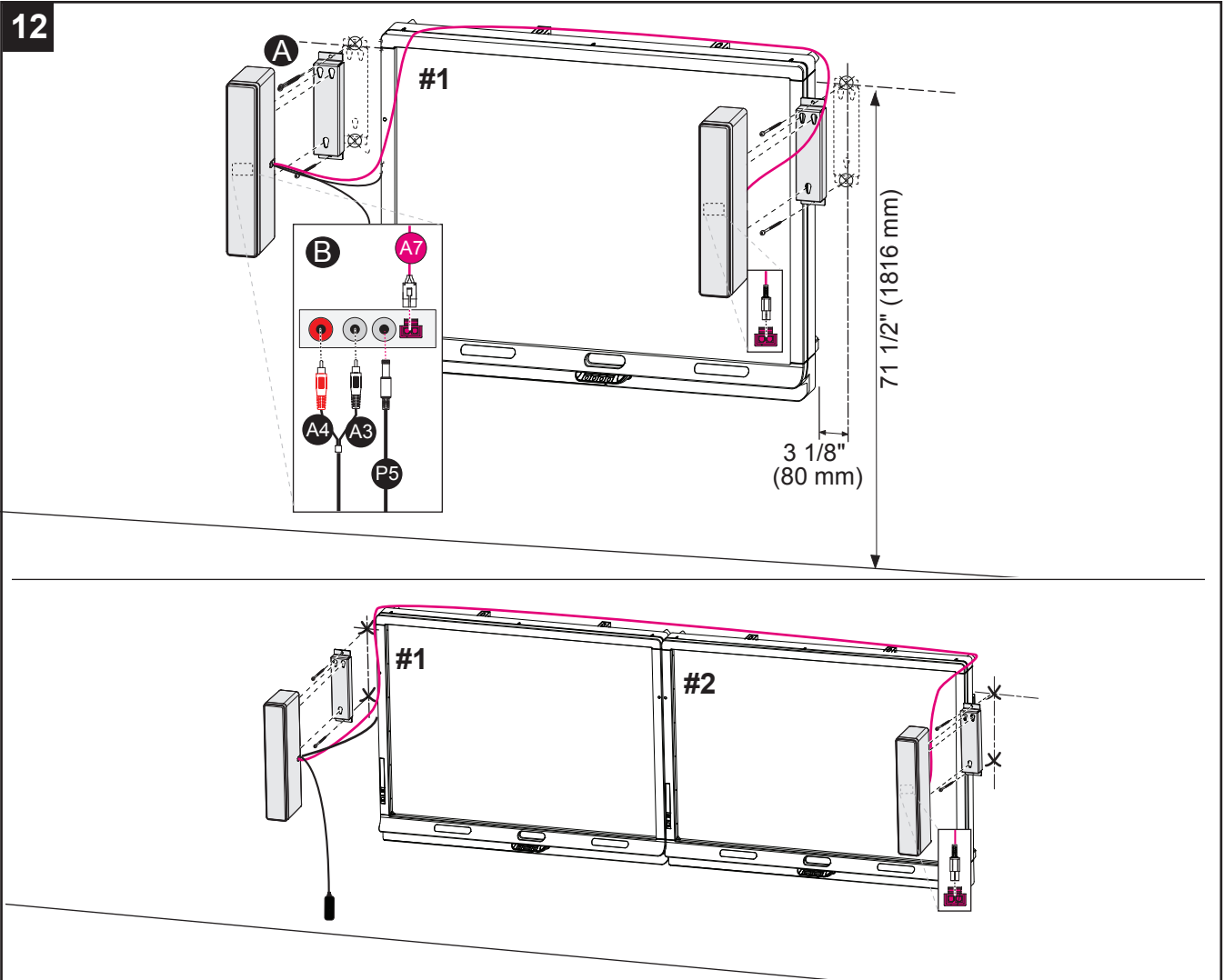


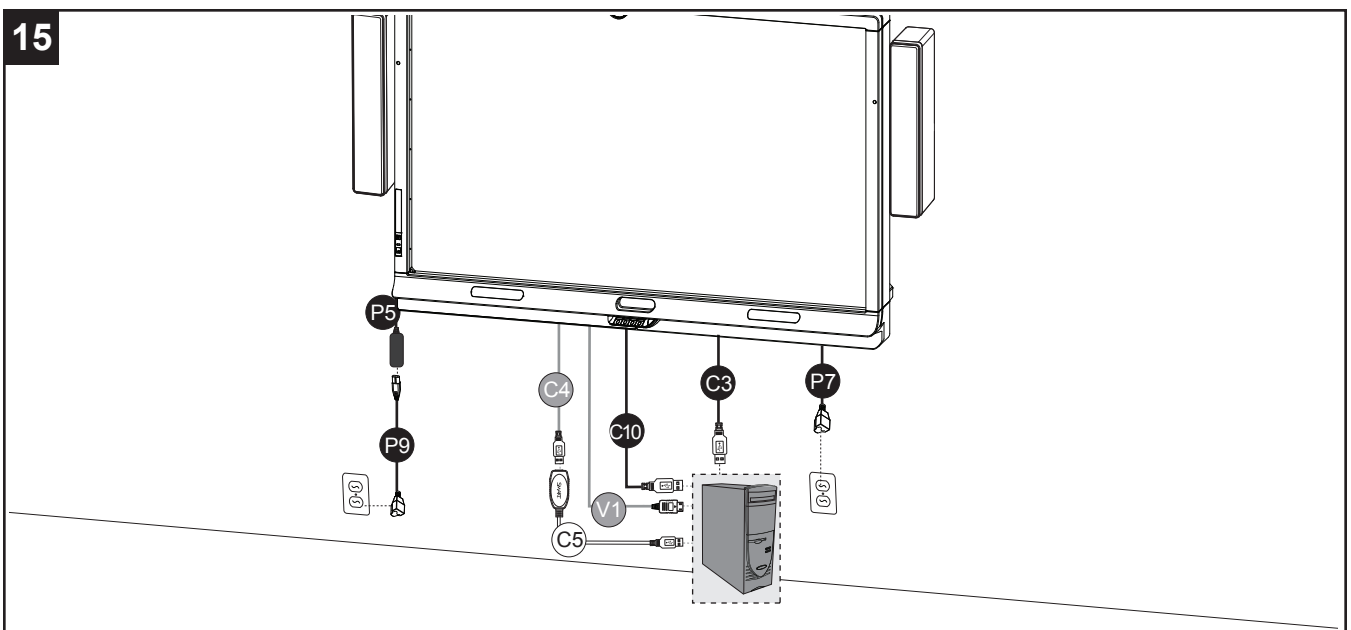
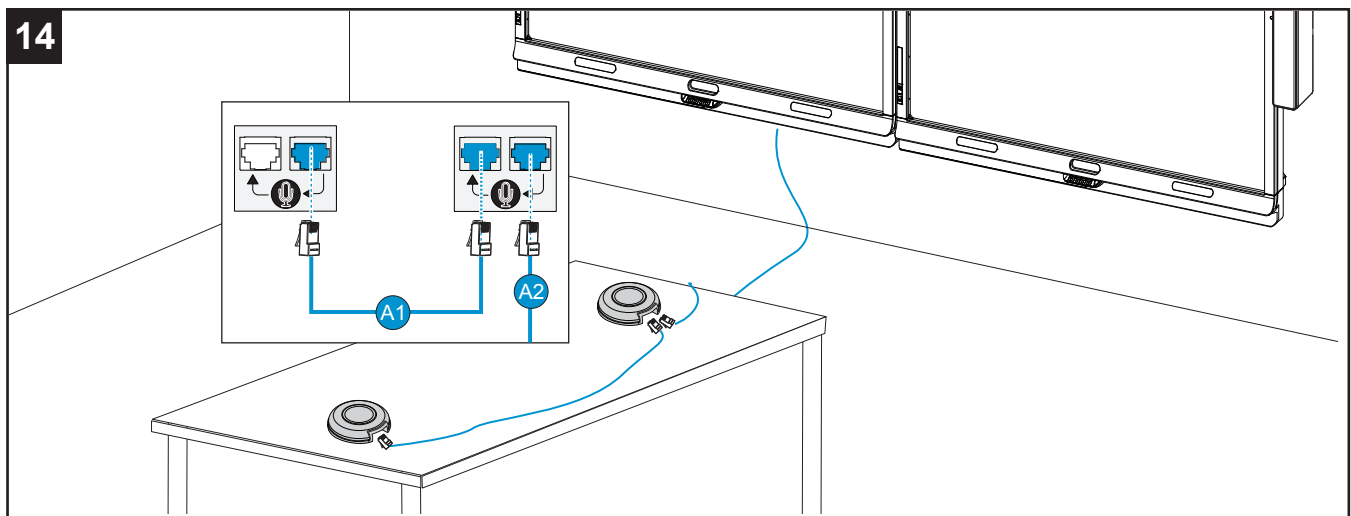
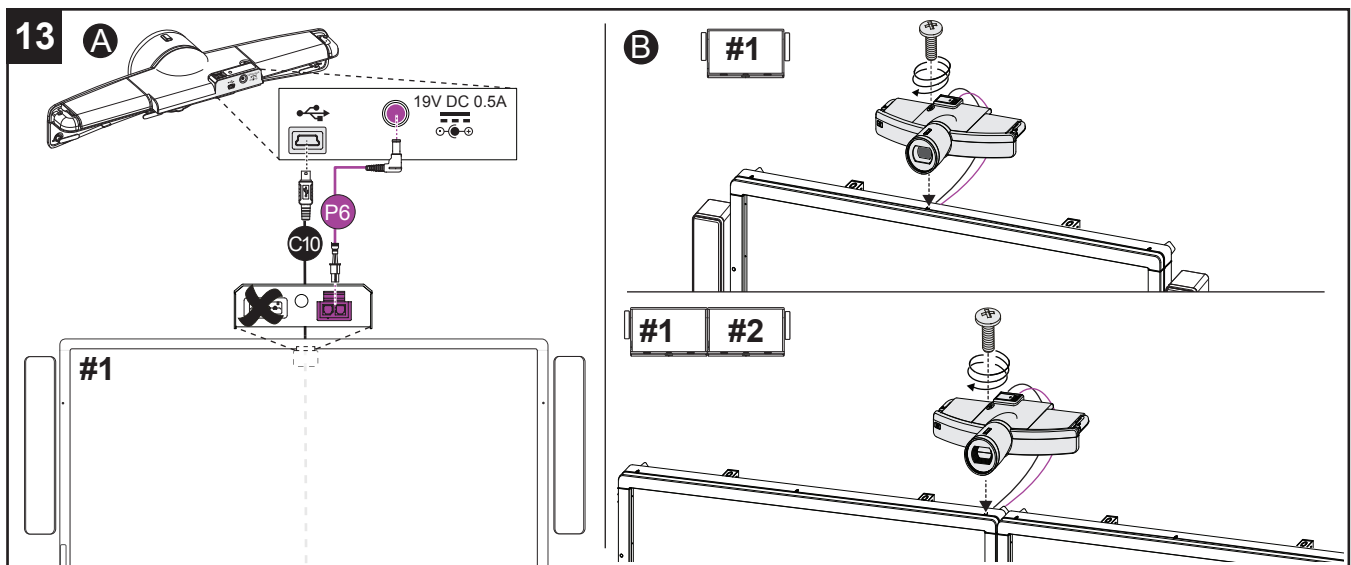


11

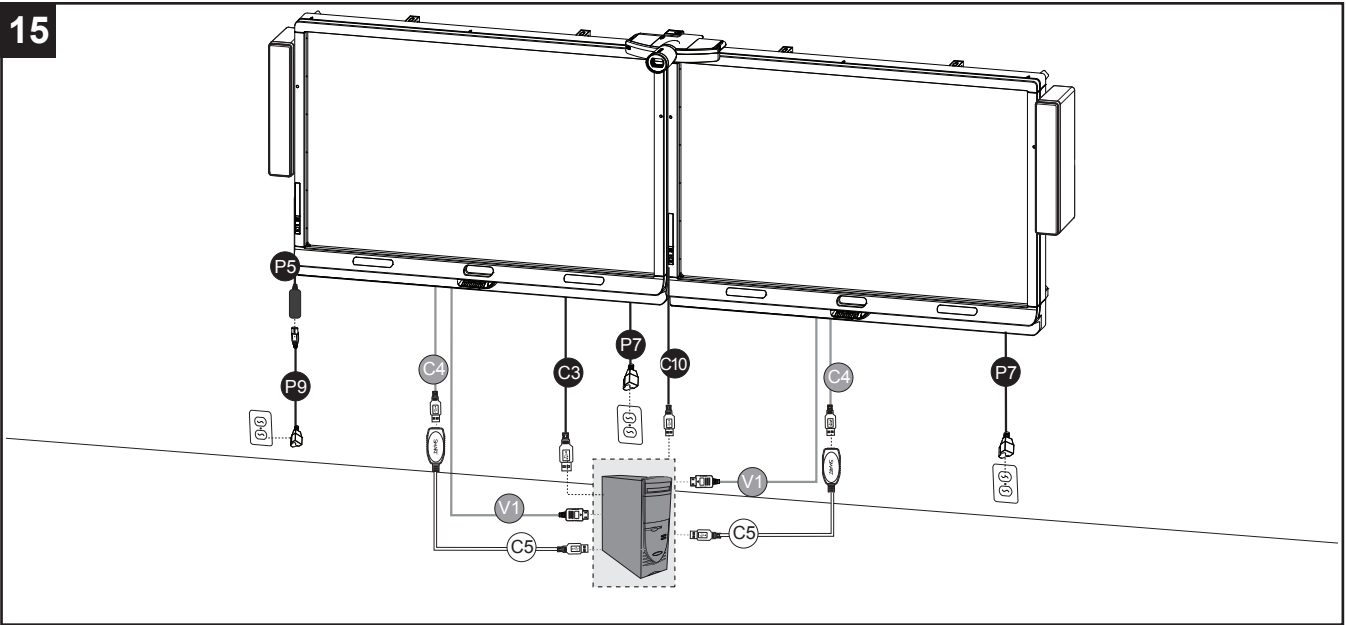


12

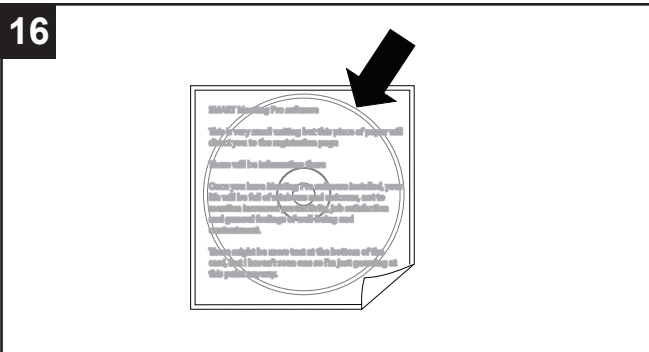




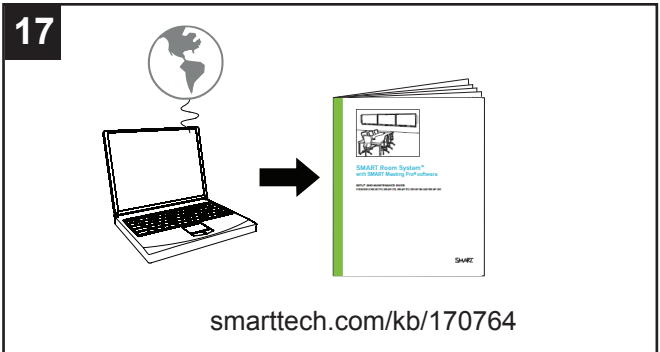
15



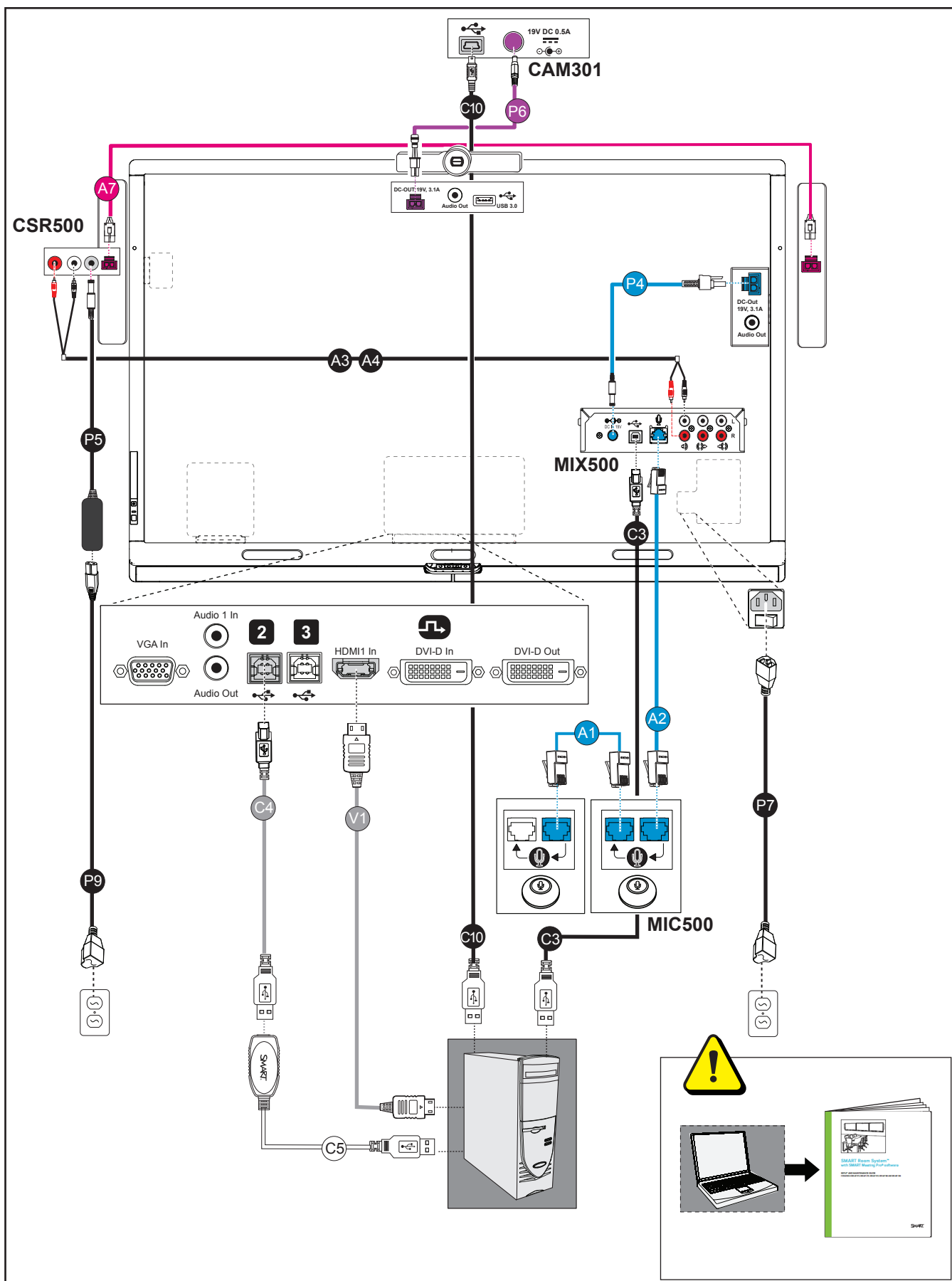
16

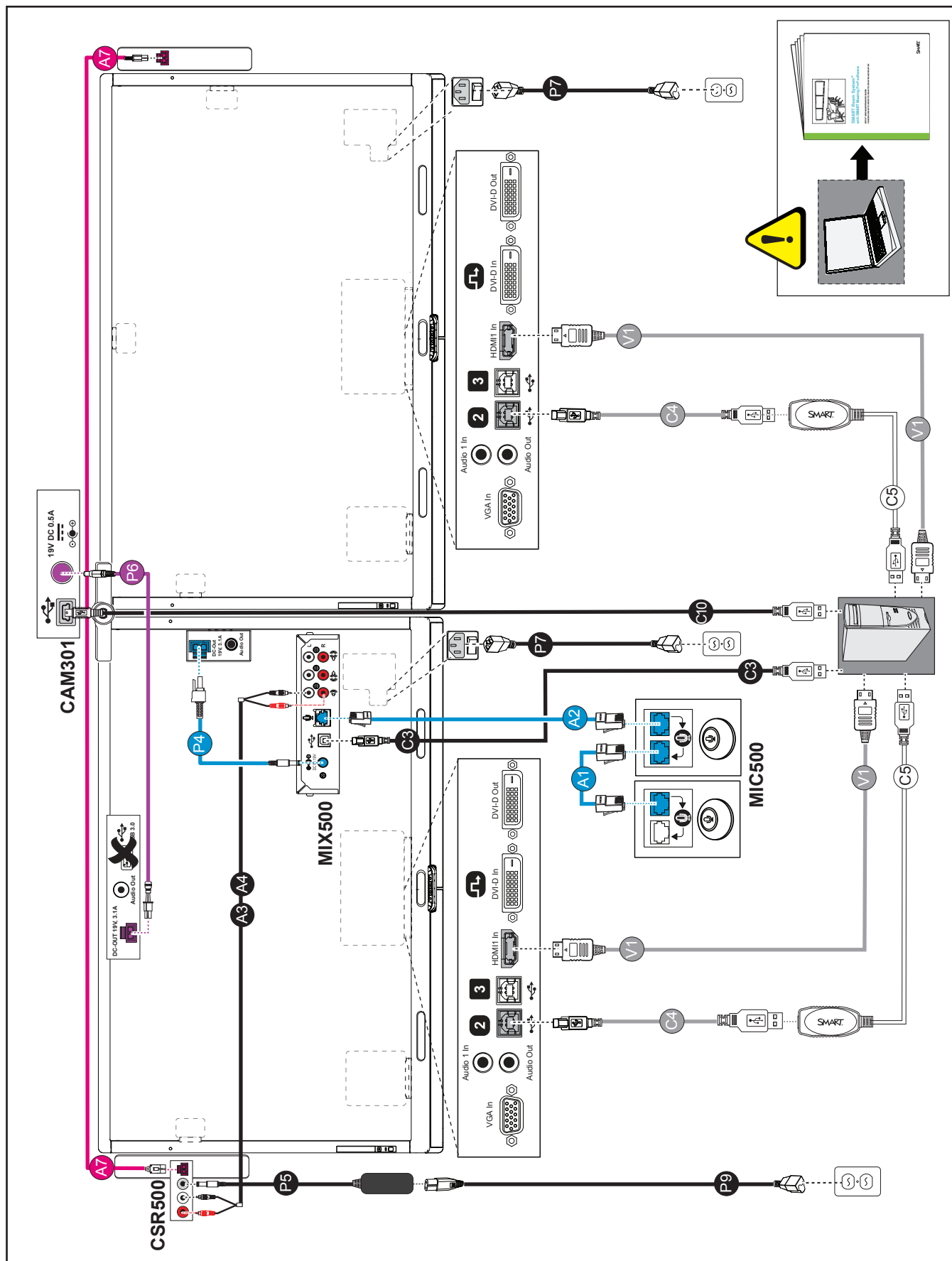


17



[smarttech.com/kb/170764](http://smarttech.com/kb/170764)





## Hardware environmental compliance

SMART Technologies supports global efforts to ensure that electronic equipment is manufactured, sold and disposed of in a safe and environmentally friendly manner.



### **Waste Electrical and Electronic Equipment and Battery regulations (WEEE and Battery Directives)**

Electrical and electronic equipment and batteries contain substances that can be harmful to the environment and to human health. The crossed-out wheeled bin symbol indicates that products should be disposed of in the appropriate recycling stream and not as regular waste.



### **Batteries**

The remote contains an AAA battery. Recycle or dispose of batteries properly.

See [smarttech.com/compliance](http://smarttech.com/compliance) for more information.



[smarttech.com/support](http://smarttech.com/support)  
[smarttech.com/contactsupport](http://smarttech.com/contactsupport)

**SMART**<sup>®</sup>

1024961 Rev 01

© 2014 SMART Technologies ULC. All rights reserved. SMART Board, smarttech, the SMART logo and all SMART taglines are trademarks or registered trademarks of SMART Technologies ULC in the U.S. and/or other countries. All third-party products and company names may be trademarks of their respective owners. Contents are subject to change without notice. This product and/or use thereof covered by one or more of the following U.S. patents; [smarttech.com/patents](http://smarttech.com/patents). Other patents pending. 06/2014.

[smarttech.com/kb/170762](http://smarttech.com/kb/170762)