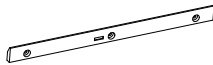
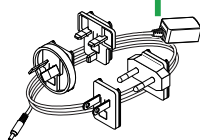
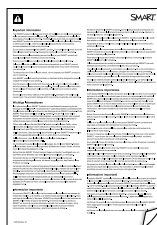
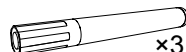
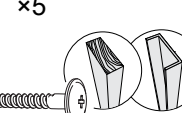
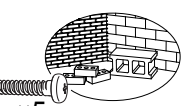


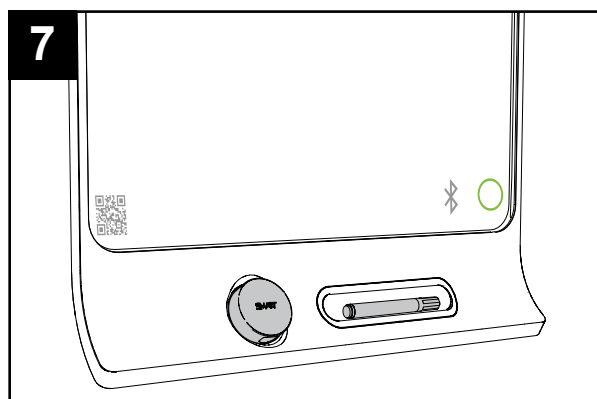
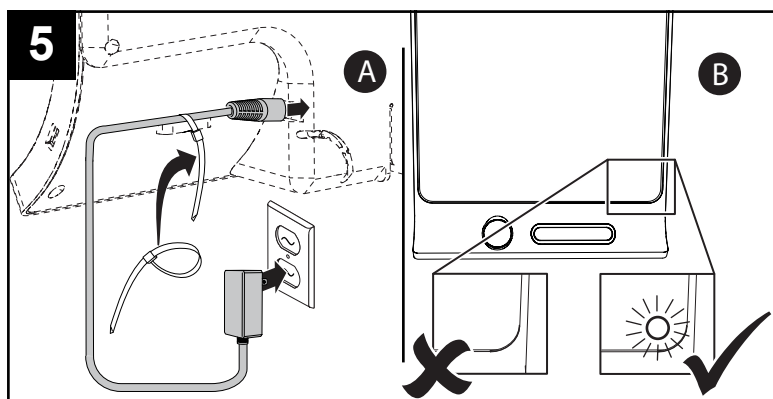
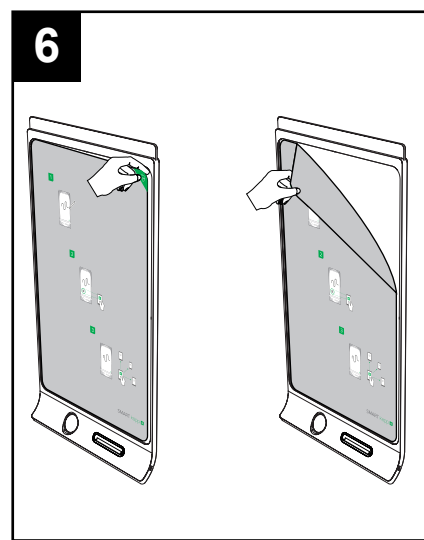
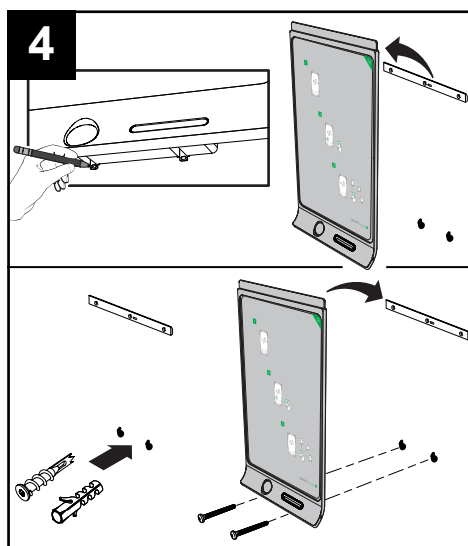
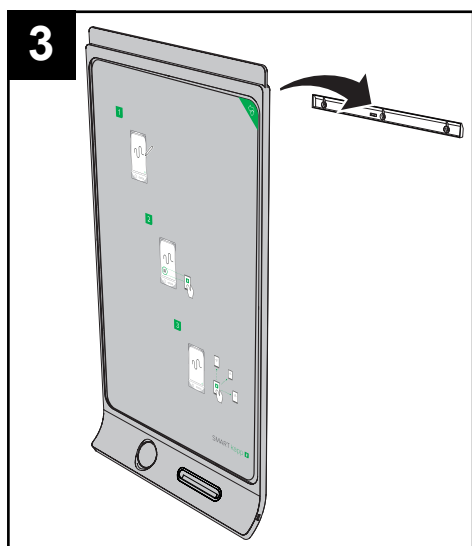
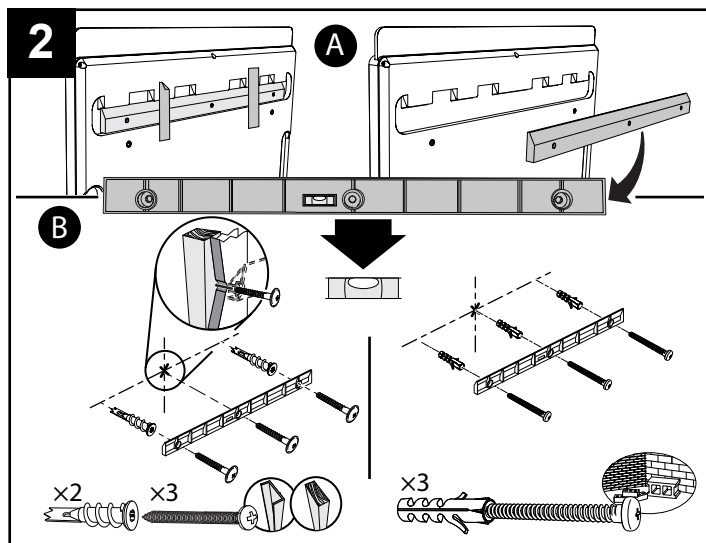
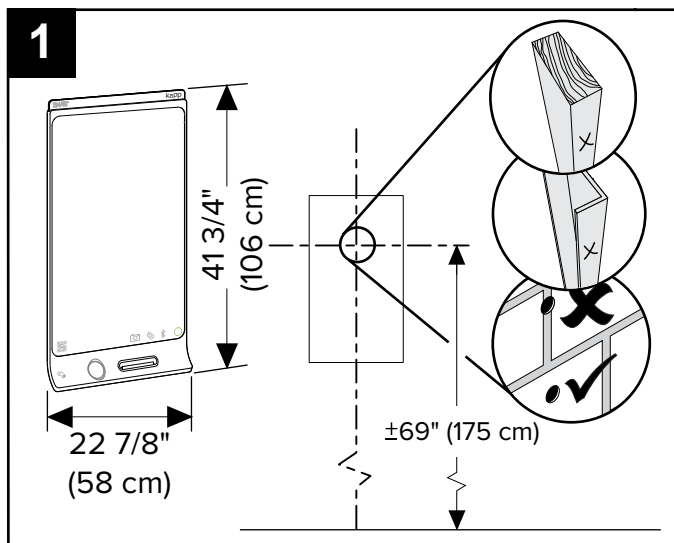
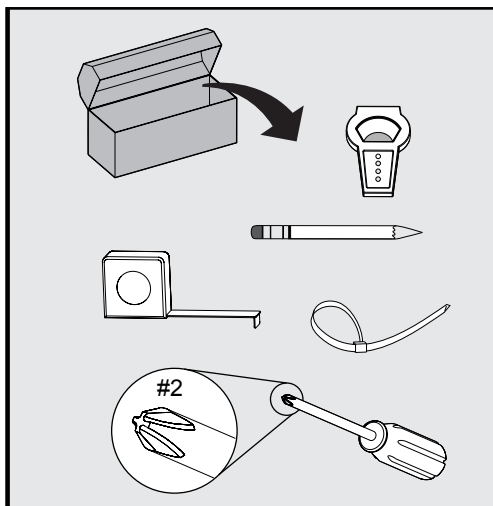
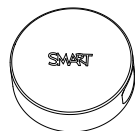
SMART
kapp™



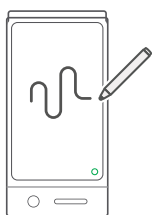
35 lb.
(16 kg)



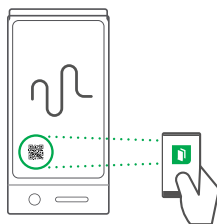
x3



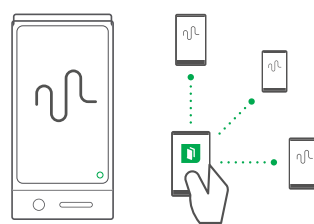
1



2



3



smarttech.com/kb/170769

Hardware environmental compliance

SMART Technologies supports global efforts to ensure that electronic equipment is manufactured, sold and disposed of in a safe and environmentally friendly manner.



Waste Electrical and Electronic Equipment Directive (WEEE Directive)

Electrical equipment contain substances that can be harmful to the environment and to human health.

The crossed-out wheeled bin symbol indicates that products should be disposed of in the appropriate recycling stream and not as regular waste.

See smarttech.com/compliance for more information.

smartkapp.com
smartkapp.com/support



SMART[®]

1024776 Rev 06