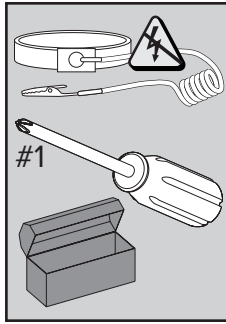
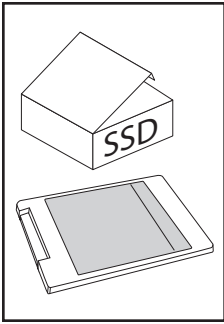
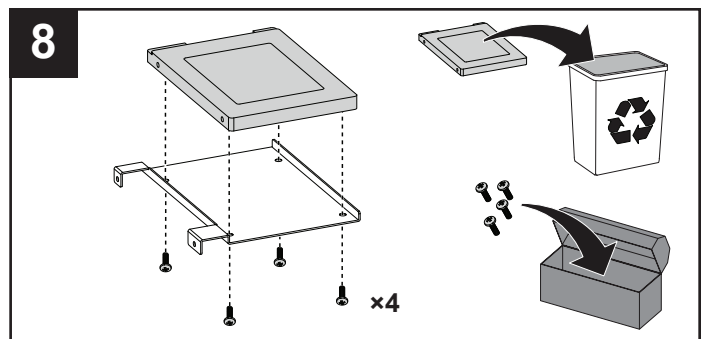
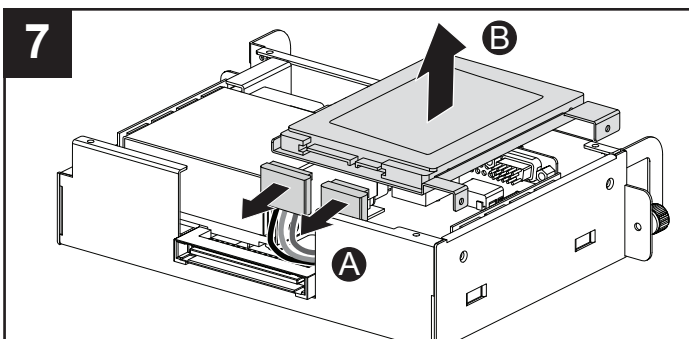
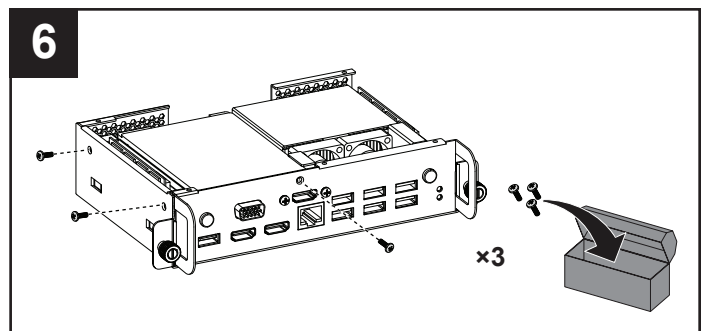
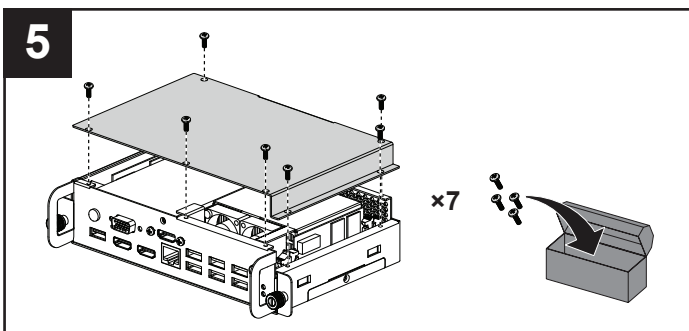
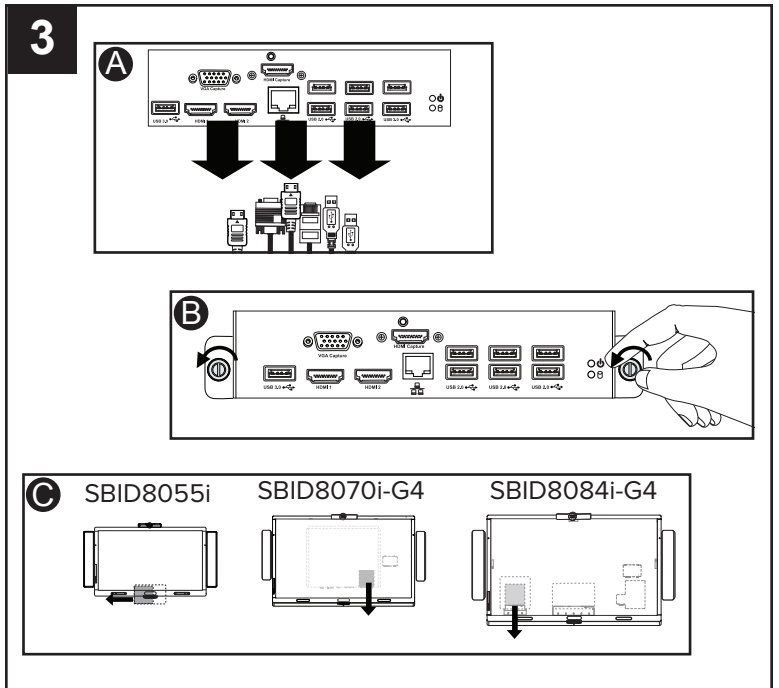
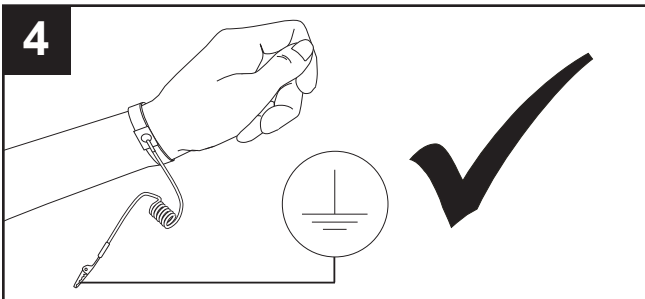
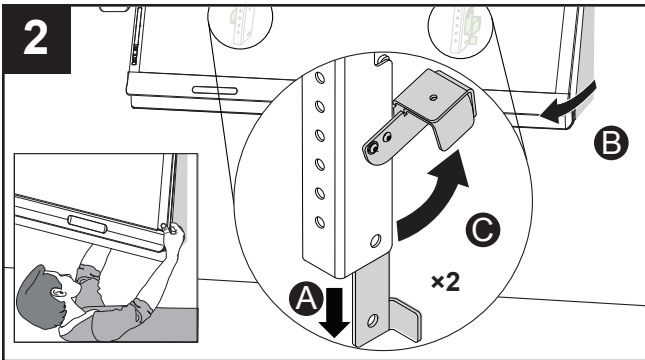
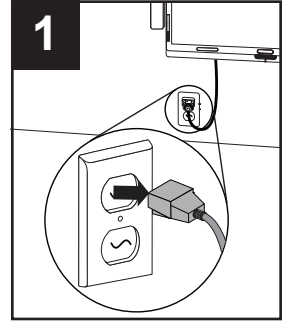
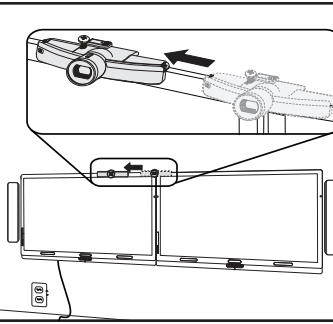
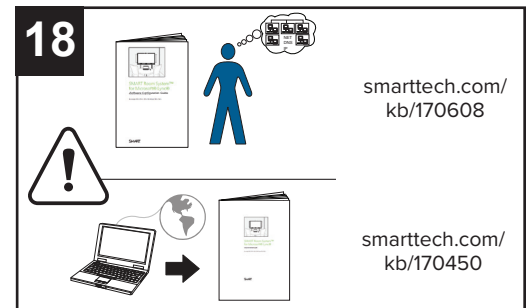
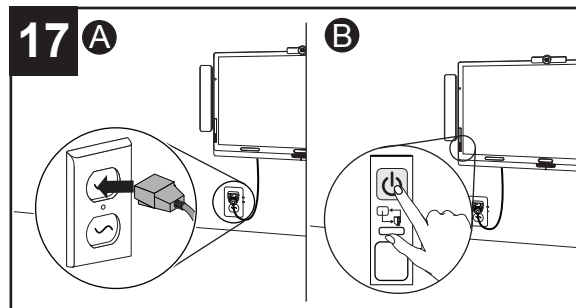
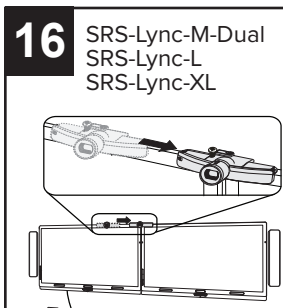
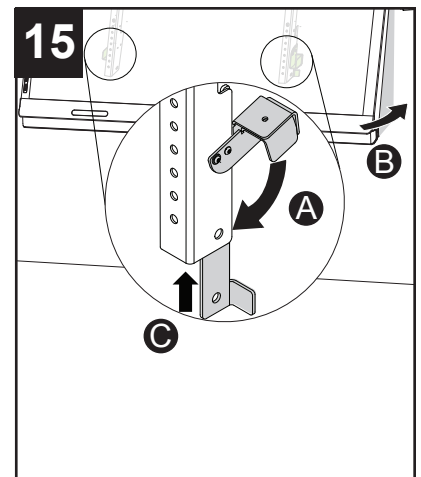
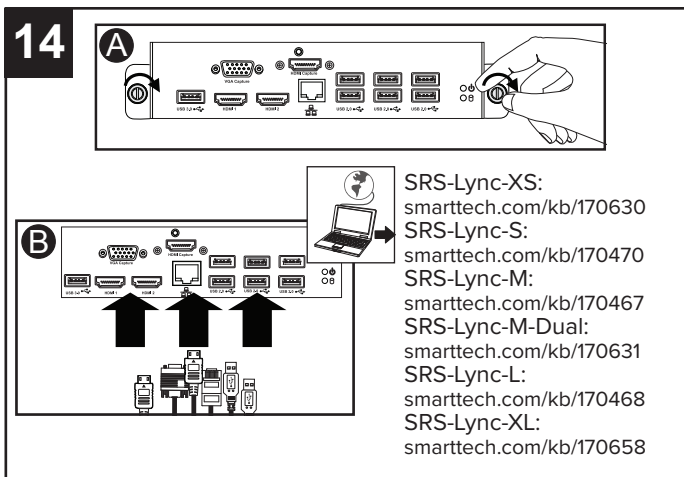
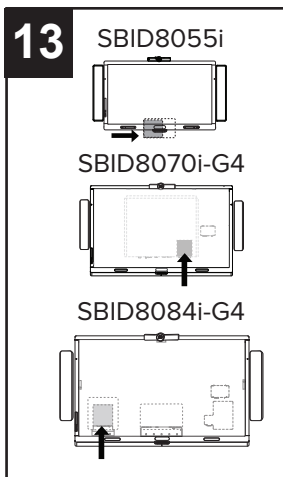
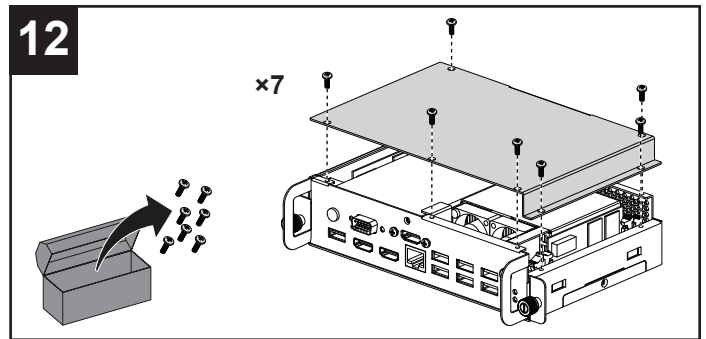
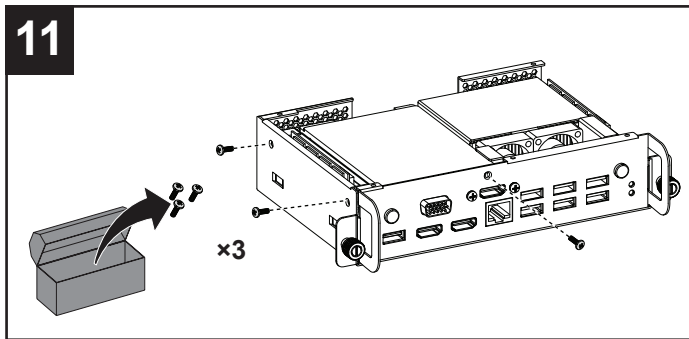
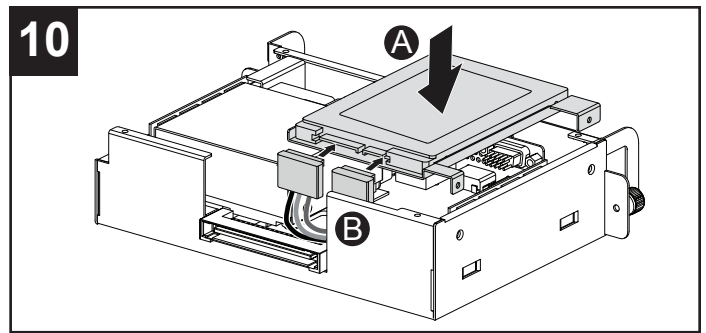
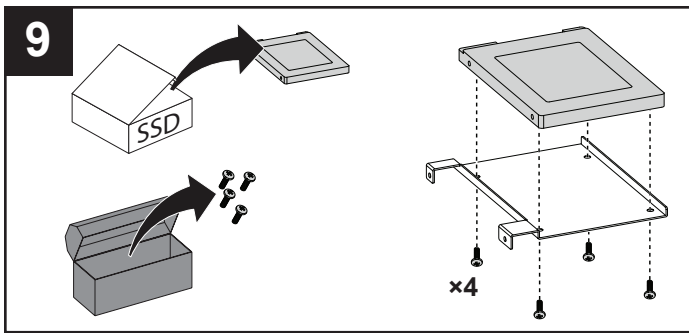


# FRU-SSD-AM70-L




!  
SRS-Lync-M-Dual  
SRS-Lync-L  
SRS-Lync-XL





## Hardware environmental compliance

SMART Technologies supports global efforts to ensure that electronic equipment is manufactured, sold and disposed of in a safe and environmentally friendly manner.

 **Waste Electrical and Electronic Equipment and Battery regulations (WEEE and Battery Directives)**  
 Electrical and electronic equipment and batteries contain substances that can be harmful to the environment and to human health. The crossed-out wheeled bin symbol indicates that products should be disposed of in the appropriate recycling stream and not as regular waste. See [smarttech.com/compliance](http://smarttech.com/compliance) for more information.



[smarttech.com/support](http://smarttech.com/support)  
[smarttech.com/contactsupport](http://smarttech.com/contactsupport)

© 2014 SMART Technologies ULC. All rights reserved. The SMART logo, smarttech and all SMART taglines are trademarks or registered trademarks of SMART Technologies ULC in the U.S. and/or other countries. All third-party products and company names may be trademarks of their respective owners. Contents are subject to change without notice. This product and/or use thereof covered by one or more of the following U.S. patents; [smarttech.com/patents](http://smarttech.com/patents). Other patents pending. 04/2014.

**SMART**

1024695 Rev 01

[smarttech.com/kb/170771](http://smarttech.com/kb/170771)