

Quick reference guide

Education Software Installer 2015 Complete installer (EXE) installation guide for Windows

Introduction

This guide is intended for teachers, IT administrators and others who are responsible for installing software on multiple computers. This guide explains how to install the SMART software using the Education Software Installer.

Computer requirements

- Intel® Core™ 2 Duo processor or better
- 2 GB of RAM
- 3 GB free hard disk space
- Windows 7 SP1 or later
- Internet access to download SMART software

SCCM/GPO installations requires additional components on remote computers:

- Microsoft® .NET Framework 4.5.1 for SMART Ink and SMART Notebook
- Microsoft Visual Studio® Tools for Office for SMART Ink
- Adobe® Flash® Player 19 ActiveX® control for SMART Notebook software
- Adobe Flash Player 19 Firefox® plug-in for SMART Notebook and SMART Response software

Getting installation and configuration files

Installation packages are available as EXE or MSI. This quick reference guide, uses the USB executable (**smartesi2015decusb.exe**) also referred to as SMART Education Software (EXE). For installation configuration use the SMART Install Manager (**smartinstallmanager1_6.exe**). These packages can be found on the supplied DVD or online from the SMART website.

For more detailed information, see the full SMART Education Software system administrator's guide at

<http://education.smarttech.com/products/notebook/notebook-resources-for-admins>

Using the supplied DVD

Locate **SMART Education Software.exe** and copy the file to your network, then install SMART Install Manager from the DVD.

To install the SMART Install Manager from the DVD

1. Insert the DVD in your computer's DVD drive.
2. Browse to **Administrators > Windows** on the *DVD drive*, and then double-click **SMART Install Manager.exe**.
The SMART Install Manager installation wizard appears.
3. Follow the on-screen instructions.

Using the SMART website

Download the SMART Education Software and SMART Install Manager from the website following the steps below.

To download SMART Education Software and SMART Install Manager from the SMART website

1. Go to <https://education.smarttech.com/en/products/notebook/download#admin>.
2. If you have a product key, enter it into the *Enter your key* field or select *Looking for an older version of Notebook or know what software you need?* link.

3. Complete steps 1-4 and click **DOWNLOAD** as outlined below (be sure to select **EXE Installer** in step 4).

Administrators

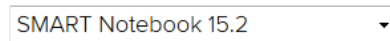
To find out if you are entitled to this release, enter your Notebook software license key below

Step 1 - Enter your key



[Looking for an older version of Notebook or know what software you need?](#)

Step 2 - Select your version



Step 3 - Confirm your operating system

- ☒ Windows
☐ Mac

Step 4 - Select install package

- ☐ MSI Installer Package
☒ EXE Installer

DOWNLOAD

Choose optional add-on packages

[SMART Install Manager](#)

4. Download SMART Install Manager, click the *SMART Install Manager* link (under *Choose optional add-on packages*). Save the **smartinstallmanager1_6.exe** file to your computer.
5. Browse to and double-click the **smartinstallmanager1_6.exe** file you downloaded. The SMART Install Manager installation wizard appears.
6. Follow the on-screen instructions.

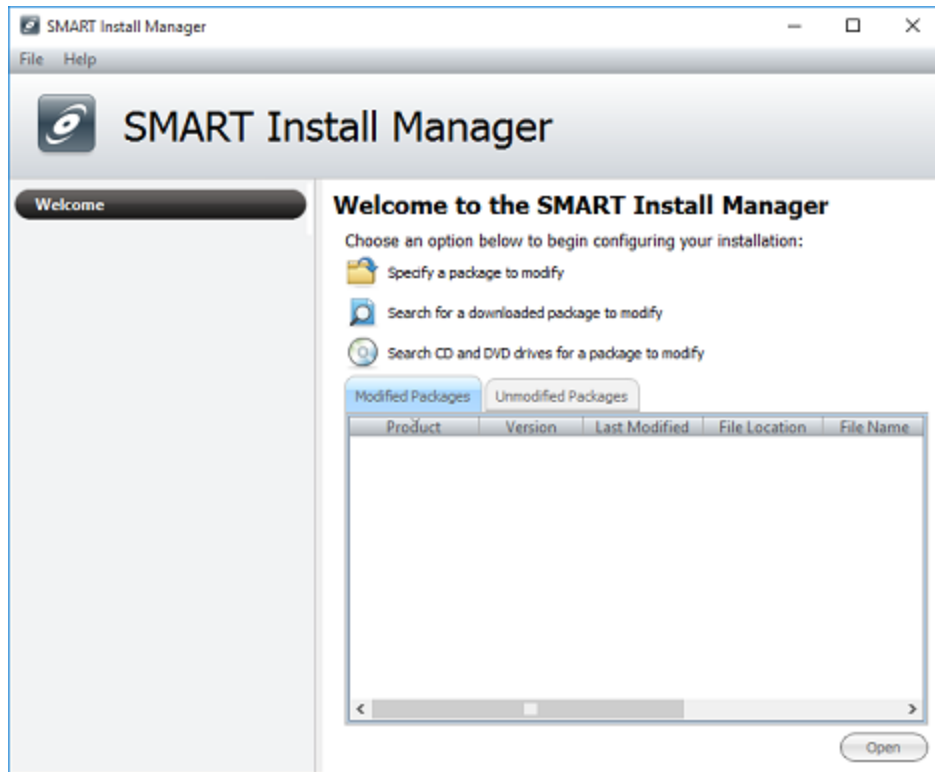
Configure SMART Education Software for deployment

Use the SMART Install Manager to configure the SMART Education Software Installer.

To open an installation package

1. Start the SMART Install Manager, then select **File > Open**.
2. Drag the SMART Education Software Installer EXE file into the SMART Install Manager window.

You can also select installation packages on your computer by clicking **Specify a package to modify**, browsing to the file and selecting **Open**.



Configuring products and options for installation

After you open an installation package, select the products and options from the control panel.

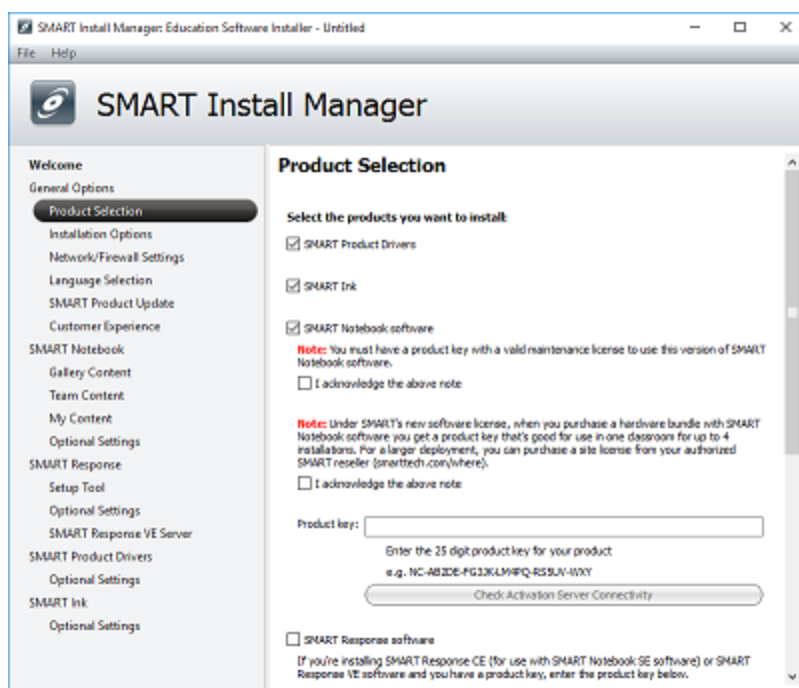


IMPORTANT

The following options install software using the default settings.

To select products and options

1. Select **Product Selection** from the *General Options* menu.
2. Select the following products from the *Select the products you want to install* box if they are not already selected:
 - **SMART Product Drivers**
 - **SMART Ink**
 - **SMART Notebook software**
3. Read both notes under the *SMART Notebook software* product selection, and select **I acknowledge the above note** check box.
4. If you have a product key enter it into the *Product key* box.



5. Select the **Gallery Content** from the *SMART Notebook* menu.
6. Select the **Don't install the Gallery** check box.
SMART recommends the Gallery content be turned off for this installation.

To publish the configuration

1. Select **File > Publish**.
The published output is a formatted .xml file.
2. Select **File > Save** to save and complete the configuration process.

Deployment of SMART Education Software

All required third-party installation packages (described on [page 1](#)) should automatically be installed through the SMART Education Software install package and do not need to be deployed separately.

Follow these instructions to deploy onto a single computer or multiple computers.

To deploy or install on a single computer

1. Open the **Administrator command** window.
2. Enter the following command:

```
[PATH_TO_ESI]/ESI.exe --adminfile [PUBLISHED_XML_CONFIG] /qn
```

- Where *[PUBLISHED_XML_CONFIG]* is the name of the configuration .xml file that you published with the SMART Install Manager.
- The SMART Education Software (EXE) will automatically generate an installation log in user temp folder, %TEMP%, in the form of: SMARTInstallWrapper_15.2.xxx.0_mmddtime.log, where xxx is the build number and *mmddtime* is the month, day and time that the installer started.

To deploy or install onto multiple computers

1. Open the **Administrator command** window.
2. Enter the following command:

```
[PATH_TO_ESI]/ESI.exe --adminfile [PUBLISHED_XML_CONFIG] /qn
```

- Where *[PUBLISHED_XML_CONFIG]* is the name of the configuration .xml file that you published through SMART Install Manager.
- The SMART Education Software (EXE) will automatically -generate an installation log in the user temp folder, %TEMP%, in the form of SMARTInstallWrapper_15.2.xxx.0_mmddtime.log, where *xxx* is the build number and *mmddtime* is the month, day and time that the installer started.
- You can also use network configuration push applications such as GPO, and SCCM. Configure the push tool for the application installer, command line entries, and required network and computer groups to push the SMART installation installer.



NOTE

If you use a network deployment tool, such as Group Policy software installation, start up script, or Microsoft SCCM, you can specify your product key. In Install Manager or by using command-line parameters. Activation occurs during installation on each computer.



TIP

If your computer stops responding after the performing procedure above, restart your computer.

For more detailed information, see the full SMART Education Software system administrator's guide at

<http://education.smarttech.com/products/notebook/notebook-resources-for-admins>.

© SMART Technologies ULC. All rights reserved. No part of this publication may be reproduced, transmitted, transcribed, stored in a retrieval system or translated into any language in any form by any means without the prior written consent of SMART Technologies ULC. Information in this manual is subject to change without notice and does not represent a commitment on the part of SMART.
This product and/or use thereof covered by one or more of the following U.S. patents.
www.smarttech.com/patents

. 02/2016.

