

# SMART<sup>®</sup>



## ***Service Parts Diagrams***

**For Model:**

**SBID-7375P-I5-W**

**SBID-7375P-M3-W**

**SBID-7375P-PENT-W**

## Service Parts Diagrams Revision History

### Revision 1 - December, 2018

- New document

### Revision 2 - July, 2019

- Remove 1029766

### Standard Warranty Terms

Base product: Three-year limited equipment warranty

First Customer Ship: November, 2018

---

**SMART Technologies**

3636 – Research Road NW

Calgary, AB T2L 1Y1

CANADA

Support +1.403.228.5940 or Toll Free 1.866.518.6791 (Canada/U.S.)

Support Fax +1.403.806.1256

[www.smarttech.com/contactserviceparts](http://www.smarttech.com/contactserviceparts) [www.smarttech.com](http://www.smarttech.com)



# Service Parts Diagrams for the SBID-7375P-I5/M3/PENT-W

---

Identifying Your Product Using the Serial Number ..... 1

Ordering Parts ..... 1

SBID-7375P-I5/M3/PENT-W Parts ..... 2



## Identifying Your Product Using the Serial Number

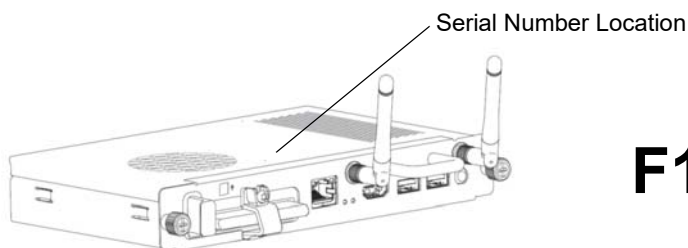
To make sure that you have the correct service parts diagrams, you must verify the serial number of your SBID-7375P-I5/M3/PENT-W. The serial number of the flat panel display will be located on the right underside of the bottom bezel. The serial number of the AM50 will be located on the top of the appliance. The serial number of the compute card will be located on the bottom of the card. An example of the serial number format is shown below.



Serial Number Location

Unique Serial Number

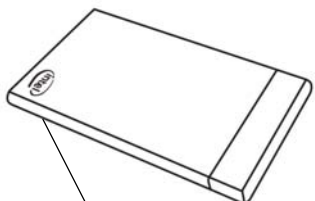
**K012JW24W0003**



Serial Number Location

Unique Serial Number

**F102KW33M00003**



Serial Number Location

Unique Serial Number

**G6MK8220000F**

## Ordering Parts

### Customers

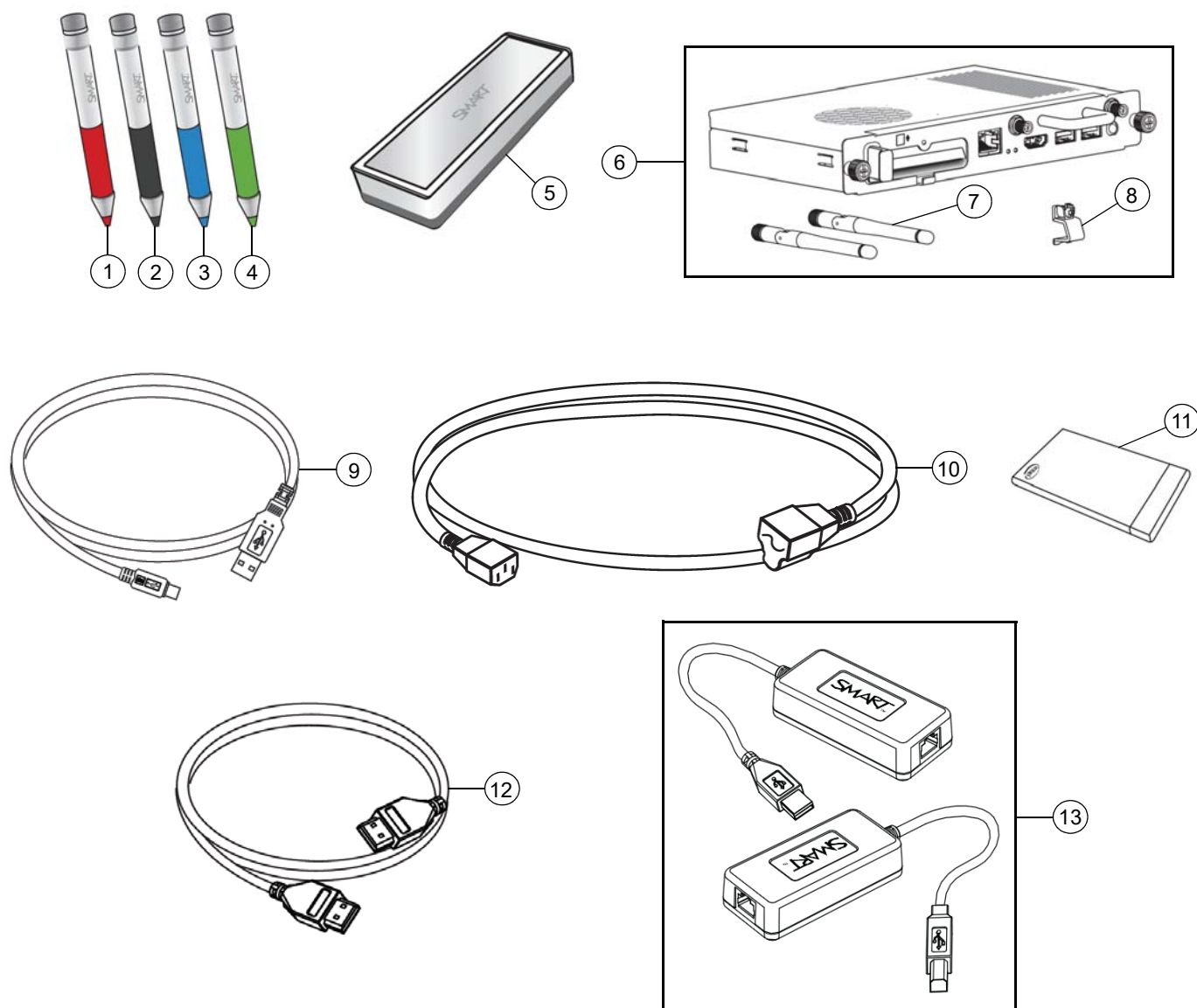
To order any of the parts in these service parts diagrams, contact your local reseller. To find a reseller near you, visit [www.smarttech.com/where](http://www.smarttech.com/where).

### Dealers and Distributors

For specific technical and pricing enquiries in regards to these diagrams please contact our service parts department. Pricing is also available on-line via the SOURCE website ([source.smarttech.com](http://source.smarttech.com)).

Web Form: [www.smarttech.com/contactserviceparts](http://www.smarttech.com/contactserviceparts)  
Phone: 1.888.42.SMART  
International: +1.403.245.0333

## SBID-7375P-I5/M3/PENT-W Parts



Item	Part No.	Qty	Description
1	1030594	1	Assembly, active stylus, red, single pack
2	1030586	1	Assembly, active stylus, black, single pack
3	1030596	1	Assembly, active stylus, blue, single pack
4	1030595	1	Assembly, active stylus, green, single pack
5	1028732	1	Assembly, eraser
6	1031808	1	Assembly, PC, AM50, ENT <b>NOTE:</b> Includes AM50 and items 7 and 8.
7	1029824	2	Antenna
8	1031640	1	Cover, security, AM50
9	1028289	1	Cable, USB, A-B, 16' (5.0 m)
10	1022063	1	Cable, power, North America, 8' (2.4 m)

10	93-055	1	Cable, power, United Kingdom, 8' (2.4 m)
10	93-056	1	Cable, power, Australia, 8' (2.4 m)
10	93-054	1	Cable, power, Europe, 8' (2.4 m)
10	93-00708-20	1	Cable, power, China, 8' (2.4 m)
10	93-00654-20	1	Cable, power, Japan, 8' (2.4 m)
10	93-063	1	Cable, power, South Africa, 8' (2.4 m)
10	1018969	1	Cable, power, Singapore, 14' 9" (4.5 m)
10	1018970	1	Cable, power, India, 14' 9" (4.5 m)
10	1018971	1	Cable, power, Saudi Arabia, 14' 9" (4.5 m)
10	1018972	1	Cable, power, Brazil, 14' 9" (4.5 m)
10	1025597	1	Cable, power, Argentina, 14' 9" (4.5 m)
10	1025603	1	Cable, power, Chile and Italy, 14' 9" (4.5 m)
10	1030859	1	Cable, power, Korea, 8' (2.4 m)
11	1031720	1	Assembly, compute card, Intel, i5 <b>NOTE:</b> Included with SBID-7375P-I5-W.
11	1031087	1	Assembly, compute card, Intel, m3 <b>NOTE:</b> Included with SBID-7375P-M3-W.
11	1031718	1	Assembly, compute card, Intel, Pentium <b>NOTE:</b> Included with SBID-7375P-PENT-W.
12	1019416	1	Cable, HDMI male to HDMI male, 20' 8" (6.3 m)
13	CAT5-XT-1100	1	CAT 5 to USB Extender, CAT5 Cable not included
Not shown	1029567	1	Kit, packaging, SBID-7375P-I5/M3/PENT-W