

SMART[®]



Service Parts Diagrams

For Model:

SBID-7386P-I5-W

SBID-7386P-M3-W

SBID-7386P-PENT-W

Service Parts Diagrams Revision History

Revision 1 - December, 2018

- New document

Revision 2 - July, 2019

- Remove 1029766

Standard Warranty Terms

Base product: Three-year limited equipment warranty

First Customer Ship: November, 2018

SMART Technologies

3636 – Research Road NW

Calgary, AB T2L 1Y1

CANADA

Support +1.403.228.5940 or Toll Free 1.866.518.6791 (Canada/U.S.)

Support Fax +1.403.806.1256

www.smarttech.com/contactserviceparts www.smarttech.com



Service Parts Diagrams for the SBID-7386P-I5/M3/PENT-W

Identifying Your Product Using the Serial Number 1

Ordering Parts 1

SBID-7386P-I5/M3/PENT-W Parts 2

Identifying Your Product Using the Serial Number

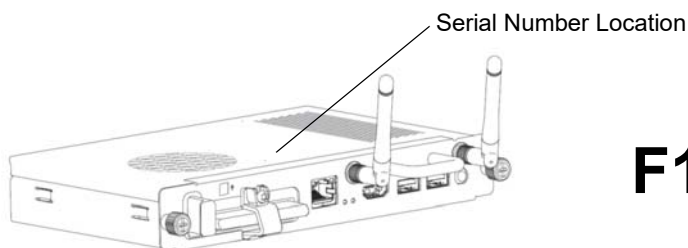
To make sure that you have the correct service parts diagrams, you must verify the serial number of your SBID-7386P-I5/M3/PENT-W. The serial number of the flat panel display will be located on the right underside of the bottom bezel. The serial number of the AM50 will be located on the top of the appliance. The serial number of the compute card will be located on the bottom of the card. An example of the serial number format is shown below.



Serial Number Location

Unique Serial Number

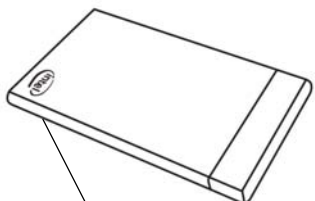
K012JW24Z0003



Serial Number Location

Unique Serial Number

F102KW33M00003



Serial Number Location

Unique Serial Number

G6MK8220000F

Ordering Parts

Customers

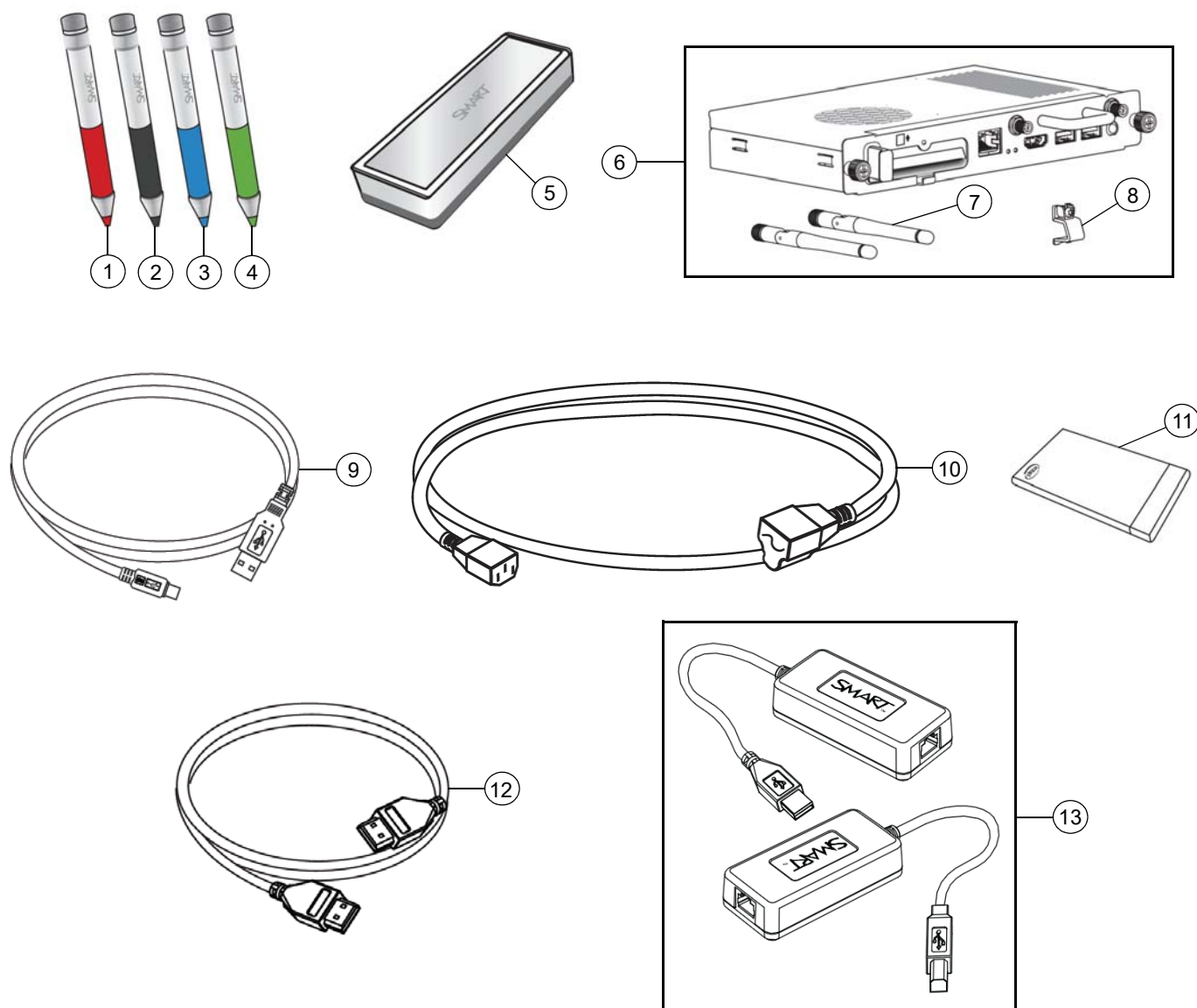
To order any of the parts in these service parts diagrams, contact your local reseller. To find a reseller near you, visit www.smarttech.com/where.

Dealers and Distributors

For specific technical and pricing enquiries in regards to these diagrams please contact our service parts department. Pricing is also available on-line via the SOURCE website (source.smarttech.com).

Web Form: www.smarttech.com/contactserviceparts
Phone: 1.888.42.SMART
International: +1.403.245.0333

SBID-7386P-I5/M3/PENT-W Parts



Item	Part No.	Qty	Description
1	1030594	1	Assembly, active stylus, red, single pack
2	1030586	1	Assembly, active stylus, black, single pack
3	1030596	1	Assembly, active stylus, blue, single pack
4	1030595	1	Assembly, active stylus, green, single pack
5	1028732	1	Assembly, eraser
6	1031808	1	Assembly, PC, AM50, ENT NOTE: Includes AM50 and items 7 and 8.
7	1029824	2	Antenna
8	1031640	1	Cover, security, AM50
9	1028289	1	Cable, USB, A-B, 16' (5.0 m)
10	1022063	1	Cable, power, North America, 8' (2.4 m)

10	93-055	1	Cable, power, United Kingdom, 8' (2.4 m)
10	93-056	1	Cable, power, Australia, 8' (2.4 m)
10	93-054	1	Cable, power, Europe, 8' (2.4 m)
10	93-00708-20	1	Cable, power, China, 8' (2.4 m)
10	93-00654-20	1	Cable, power, Japan, 8' (2.4 m)
10	93-063	1	Cable, power, South Africa, 8' (2.4 m)
10	1018969	1	Cable, power, Singapore, 14' 9" (4.5 m)
10	1018970	1	Cable, power, India, 14' 9" (4.5 m)
10	1018971	1	Cable, power, Saudi Arabia, 14' 9" (4.5 m)
10	1018972	1	Cable, power, Brazil, 14' 9" (4.5 m)
10	1025597	1	Cable, power, Argentina, 14' 9" (4.5 m)
10	1025603	1	Cable, power, Chile and Italy, 14' 9" (4.5 m)
10	1030859	1	Cable, power, Korea, 8' (2.4 m)
11	1031720	1	Assembly, compute card, Intel, i5 NOTE: Included with SBID-7386P-I5-W.
11	1031087	1	Assembly, compute card, Intel, m3 NOTE: Included with SBID-7386P-M3-W.
11	1031718	1	Assembly, compute card, Intel, Pentium NOTE: Included with SBID-7386P-PENT-W.
12	1019416	1	Cable, HDMI male to HDMI male, 20' 8" (6.3 m)
13	CAT5-XT-1100	1	CAT 5 to USB Extender, CAT5 Cable not included
Not shown	1029567	1	Kit, packaging, SBID-7386P-I5/M3/PENT-W