



## WEEE Treatment Instructions

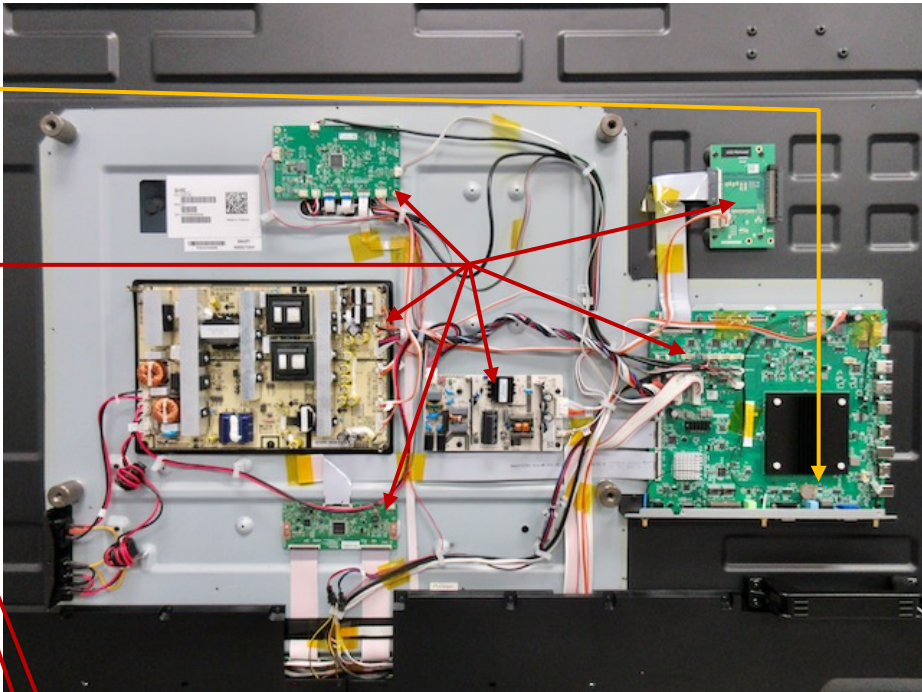
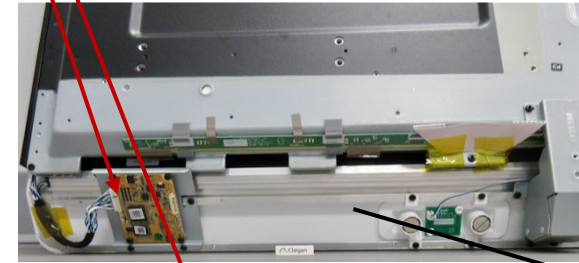
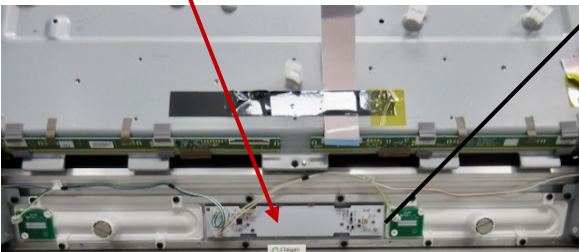
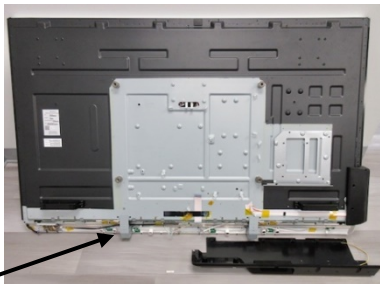
<b>Producer:</b>	<b>SMART</b>
<b>Product Name:</b>	SMART SBID-6000S Interactive Flat Panel family
<b>Part/Model Number:</b>	IDS6xx-x
<b>Date of Report:</b>	<b>2021-08-30</b>

This sheet is intended to provide instructions to recycling facilities to identify materials, components, and sub-assemblies of interest for the end-of-life treatment in compliance with the WEEE (2012/19/EU) and Batteries (2006/66/EC) Directives and the Ecodesign for Displays (2019/2021) Regulation.

### Materials and Components of Interest Present

<b>Component or Material</b>	<b>Present / Not Present</b>
Capacitors containing polychlorinated biphenyls (PCBs)	Not Present
Batteries	<b>Present</b>
Mercury containing components, such as switches or backlighting lamps	Not Present
Printed circuit boards of mobile phones generally, and of other devices if the surface of the printed circuit board is greater than 10 square centimeters	<b>Present</b>
Toner cartridges, liquid and paste, as well as colour toner	Not Present
Plastic containing brominated flame retardants weighing > 25 g	Not Present
Asbestos waste and components which contain asbestos	Not Present
Cathode ray tubes	Not Present
chlorofluorocarbons (CFC), hydrochlorofluorocarbons (HCFC) or hydrofluorocarbons (HFC), hydrocarbons (HC),	Not Present
Gas discharge lamps	Not Present
Liquid crystal displays (together with their casing where appropriate) of a surface greater than 100 square centimeters and all those back-lighted with gas discharge lamps	Not Present
External electric cables	<b>Present</b>
Refractory ceramic fibers	Not Present
Radio-active substances	Not Present
Electrolyte capacitors containing substances of concern (height > 25 mm, diameter > 25 mm or proportionately similar volume).	Not Present
Stored mechanical or electrical energy (e.g. sources of stored energy in high tension circuits, capacitors and springs in compression or tension.)	Not Present

## Materials and Components of Interest Locations

Capacitors containing polychlorinated biphenyls (PCBs)	
Batteries	
Mercury containing components, such as switches or backlighting lamps	
Printed circuit boards of mobile phones generally, and of other devices if the surface of the printed circuit board is greater than 10 square centimeters	
Toner cartridges, liquid and paste, as well as colour toner	
Plastic containing brominated flame retardants > 25 grams	
Asbestos waste and components which contain asbestos	
Cathode ray tubes	
chlorofluorocarbons (CFC), hydrochlorofluorocarbons (HCFC) or hydrofluorocarbons (HFC), hydrocarbons (HC),	
Gas discharge lamps	
Liquid crystal displays (together with their casing where appropriate) of a surface greater than 100 square centimeters and all those back-lighted with gas discharge lamps	
External electric cables	
Refractory ceramic fibers	
Radio-active substances	
Electrolyte capacitors containing substances of concern (height > 25 mm, diameter > 25 mm or proportionately similar volume).	
Stored mechanical or electrical energy (e.g. sources of stored energy in high tension circuits, capacitors and springs in compression or tension.)	
	
	



## Materials and Components of Interest Locations

Capacitors containing polychlorinated biphenyls (PCBs)

### Batteries

Mercury containing components, such as switches or backlighting lamps

Printed circuit boards of mobile phones generally, and of other devices if the surface of the printed circuit board is greater than 10 square centimeters

Toner cartridges, liquid and paste, as well as colour toner

Plastic containing brominated flame retardants > 25 grams

Asbestos waste and components which contain asbestos

### Cathode ray tubes

chlorofluorocarbons (CFC), hydrochlorofluorocarbons (HCFC) or hydrofluorocarbons (HFC), hydrocarbons (HC),

### Gas discharge lamps

Liquid crystal displays (together with their casing where appropriate) of a surface greater than 100 square centimeters and all those back-lighted with gas discharge lamps

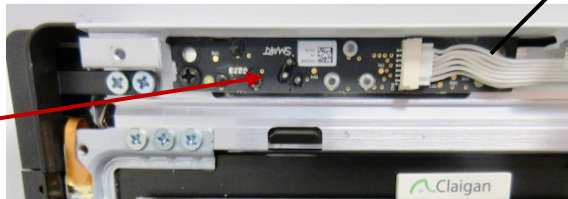
### External electric cables

Refractory ceramic fibers

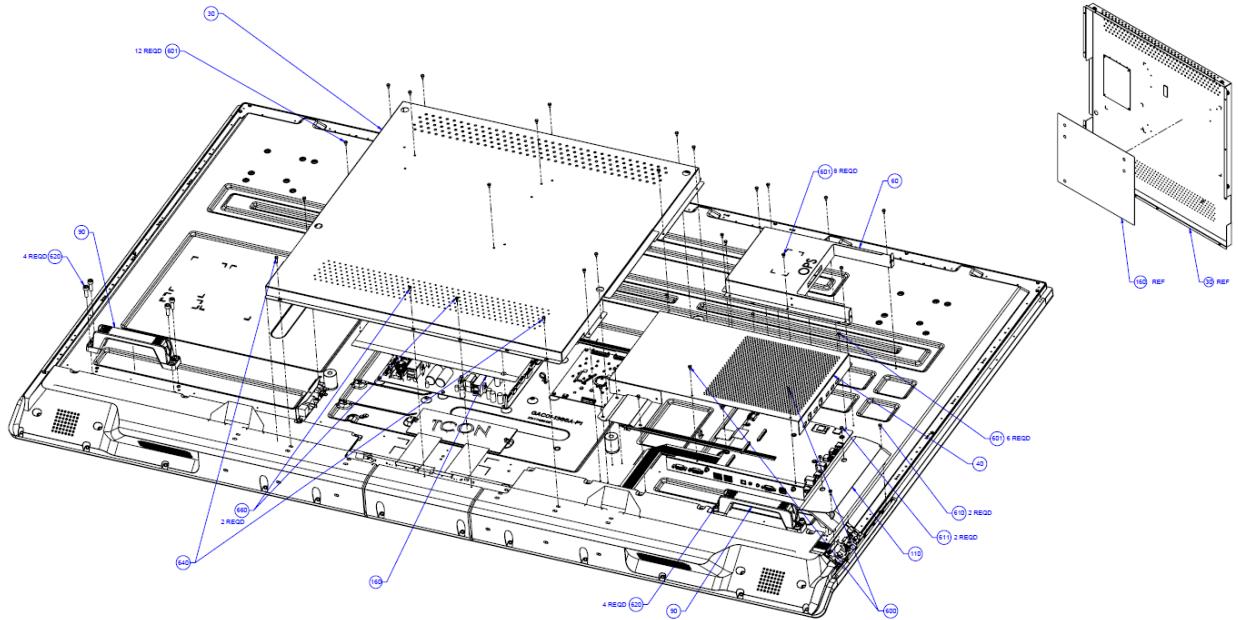
### Radio-active substances

Electrolyte capacitors containing substances of concern (height > 25 mm, diameter > 25 mm or proportionately similar volume).

Stored mechanical or electrical energy (e.g. sources of stored energy in high tension circuits, capacitors and springs in compression or tension.)



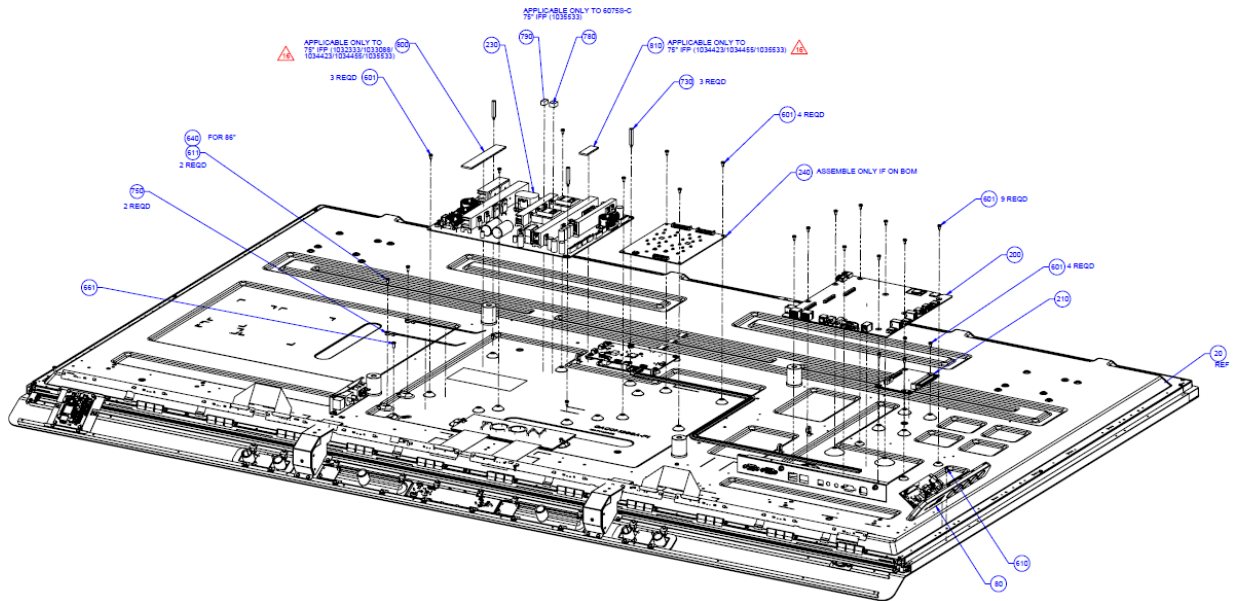
SMART Interactive Flat Panels are assembled with Phillips #2 machine screws. Disassemble as shown in the diagrams below. The diagrams show a 75" display. It is representative of the 65" and 86" displays of all generations of the 6000S family.



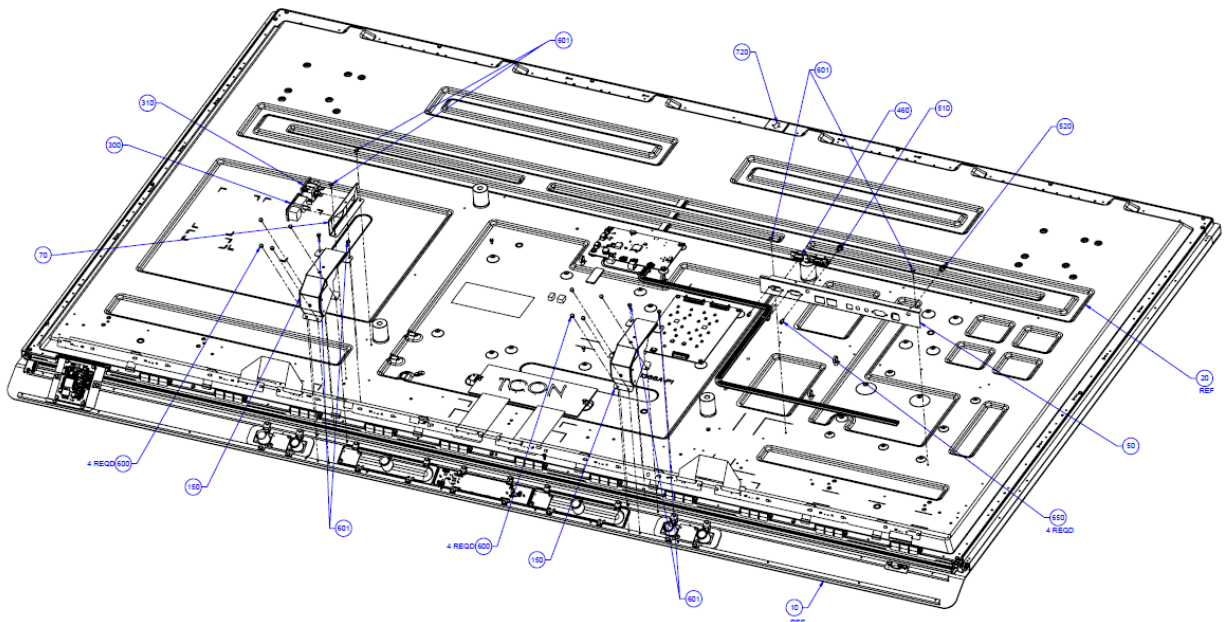
Prepared by: SMART Technologies ULC, 3636 Research Road NW, Calgary AB T2L 1Y1 Canada  
kb 171813



## Photos

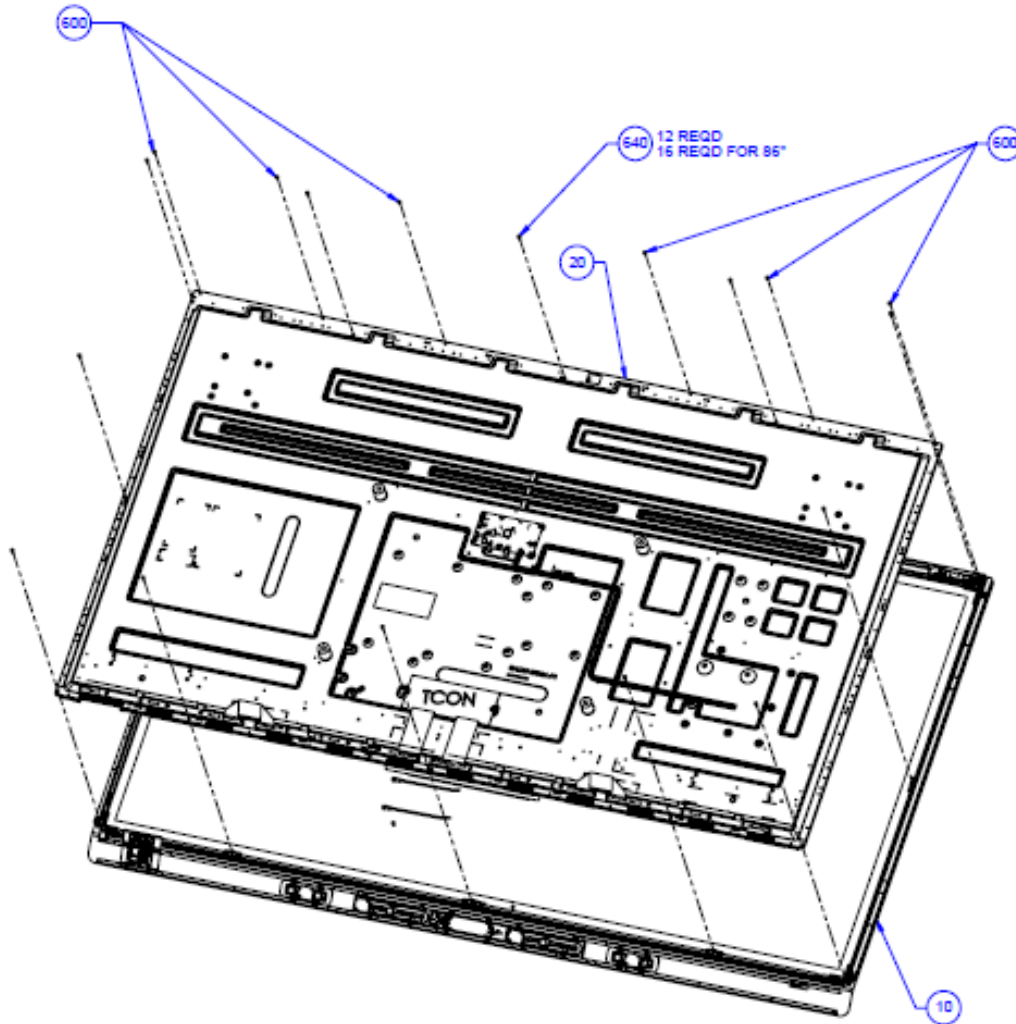


### Step 3



### Step 4

## Photos



## Step 5